

AMENDED

UNITED STATES  
DEPARTMENT OF THE INTERIOR  
GEOLOGICAL SURVEY

APPLICATION FOR PERMIT TO DRILL, DEEPEN, OR PLUG BACK

1a. TYPE OF WORK

DRILL ☒

DEEPEN ☐

PLUG BACK ☐

b. TYPE OF WELL

OIL  
WELL ☐

GAS  
WELL ☒

OTHER

SINGLE  
ZONE ☐

MULTIPLE  
ZONE ☐

2. NAME OF OPERATOR

Tenneco Oil Company

3. ADDRESS OF OPERATOR

1860 Lincoln Street, Denver, Colorado 80203

4. LOCATION OF WELL (Report location clearly and in accordance with any State requirements.)

At surface

1850' FNL & 1850' FWL

At proposed prod. zone

14. DISTANCE IN MILES AND DIRECTION FROM NEAREST TOWN OR POST OFFICE\*

15. DISTANCE FROM PROPOSED\*

LOCATION TO NEAREST  
PROPERTY OR LEASE LINE, FT.  
(Also to nearest drig. unit line, if any)

1850'

16. NO. OF ACRES IN LEASE

1,280

17. NO. OF ACRES ASSIGNED  
TO THIS WELL

320

18. DISTANCE FROM PROPOSED LOCATION\*

TO NEAREST WELL, DRILLING, COMPLETED,  
OR APPLIED FOR, ON THIS LEASE, FT.

19. PROPOSED DEPTH

5,580'

20. ROTARY OR CABLE TOOLS

Rotary

21. ELEVATIONS (Show whether DF, RT, GR, etc.)

6263' G.L.

22. APPROX. DATE WORK WILL START\*

August 1, 1975

23. PROPOSED CASING AND CEMENTING PROGRAM

SIZE OF HOLE	SIZE OF CASING	WEIGHT PER FOOT	SETTING DEPTH	QUANTITY OF CEMENT
12 1/4 "	9 5/8"	36#	200'	Sufficient to circulate
8 3/4 "	7"	20#	3450'	Cement back to surface casing

The proposed drilling program for this well is as follows:

Drill 12 1/4" hole + 200 and set 9 5/8 surface csg, circ cement to surface.

Drill 8 3/4" hole + 3450 and set 7" csg, circ cement to surface.

Drill 6 1/8" hole to T.D. using gas as drilling fluid. Log the hole and hang a 4 1/4" liner from + 3000 to T.D. and cement over the Mesa Verde interval. BOP equipment is listed as points No. 4 & No. 5 in attached 7 point program. The well will be completed through casing perforations in Mesa Verde formation, and stimulated as necessary to establish commercial gas production.

Location amended due to archeological request. Have moved 55' west and 80' north of old location of 1770' FNL & 1795' FWL.

IN ABOVE SPACE DESCRIBE PROPOSED PROGRAM: If proposal is to deepen or plug back, give data on present productive zone and proposed new productive zone. If proposal is to drill or deepen directionally, give pertinent data on subsurface locations and measured and true vertical depths. Give blowout preventer program, if any.

24.

SIGNED

*[Signature]*

TITLE

Production Clerk

DATE

July 9, 1975

(This space for Federal or State office use)

PERMIT NO.

APPROVAL DATE

APPROVED BY

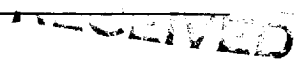
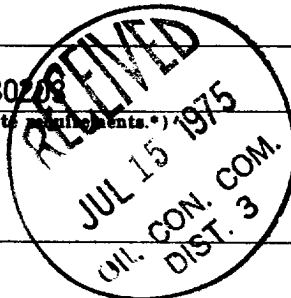
*[Signature]*

TITLE

DATE

CONDITIONS OF APPROVAL, IF ANY:

\*See Instructions On Reverse Side



JUL 14 1975

U. S. GEOLOGICAL SURVEY  
WASHINGTON, D. C.

**NEW MEXICO OIL CONSERVATION COMMISSION  
WELL LOCATION AND ACREAGE DEDICATION PLAT**

Form C-102  
Supersedes C-128  
Effective 1-1-65

All distances must be from the outer boundaries of the Section.

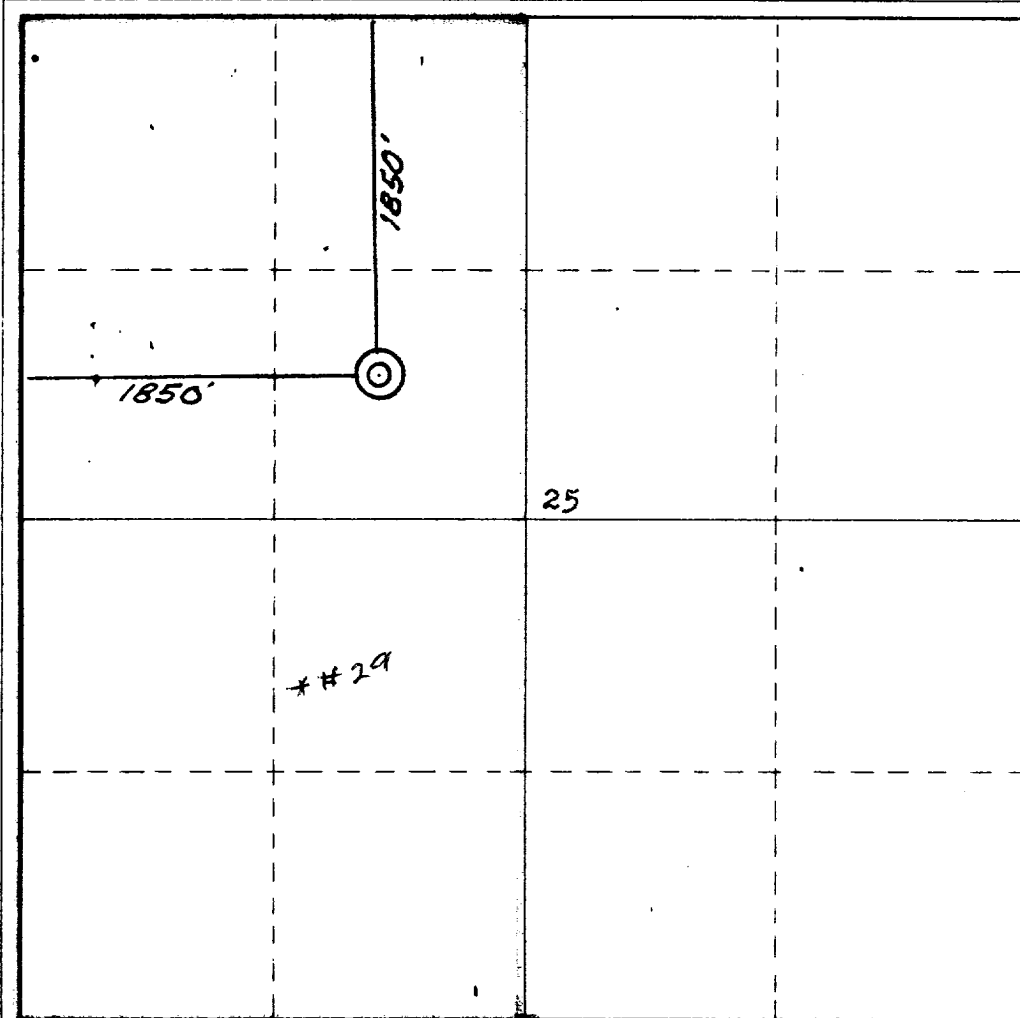
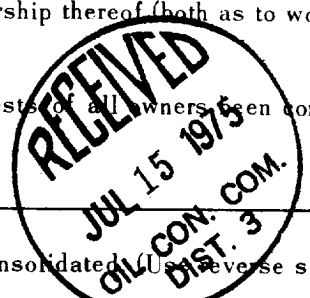
Operator <b>TENNECO OIL COMPANY</b>			Lease <b>FLORANCE</b>		Well No. <b>29 A</b>
Unit Letter <b>F</b>	Section <b>25</b>	Township <b>30 NORTH</b>	Range <b>8 WEST</b>	County <b>SAN JUAN</b>	
Actual Footage Location of Well: <div style="display: flex; justify-content: space-between;"> <span><b>1850</b> feet from the <b>NORTH</b> line and</span> <span><b>1850</b> feet from the <b>WEST</b> line</span> </div>					
Ground Level Elev. <b>6269</b>	Producing Formation <b>Mesa Verde</b>	Pool <b>Blanco Mesa Verde</b>	Dedicated Acreage: <b>320</b> Acres		

1. Outline the acreage dedicated to the subject well by colored pencil or hachure marks on the plat below.
2. If more than one lease is dedicated to the well, outline each and identify the ownership thereof (both as to working interest and royalty).
3. If more than one lease of different ownership is dedicated to the well, have the interests of all owners been consolidated by communitization, unitization, force-pooling, etc?

☐ Yes   ☐ No   If answer is "yes," type of consolidation \_\_\_\_\_

If answer is "no," list the owners and tract descriptions which have actually been consolidated (On reverse side of this form if necessary.) \_\_\_\_\_

No allowable will be assigned to the well until all interests have been consolidated (by communitization, unitization, forced-pooling, or otherwise) or until a non-standard unit, eliminating such interests, has been approved by the Commission.

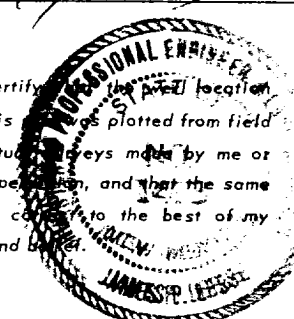


**CERTIFICATION**

I hereby certify that the information contained herein is true and complete to the best of my knowledge and belief.

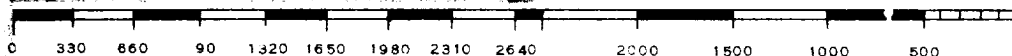
Name T. J. Drake  
Position Production Clerk  
Company Tenneco Oil Co.  
Date July 9, 1975

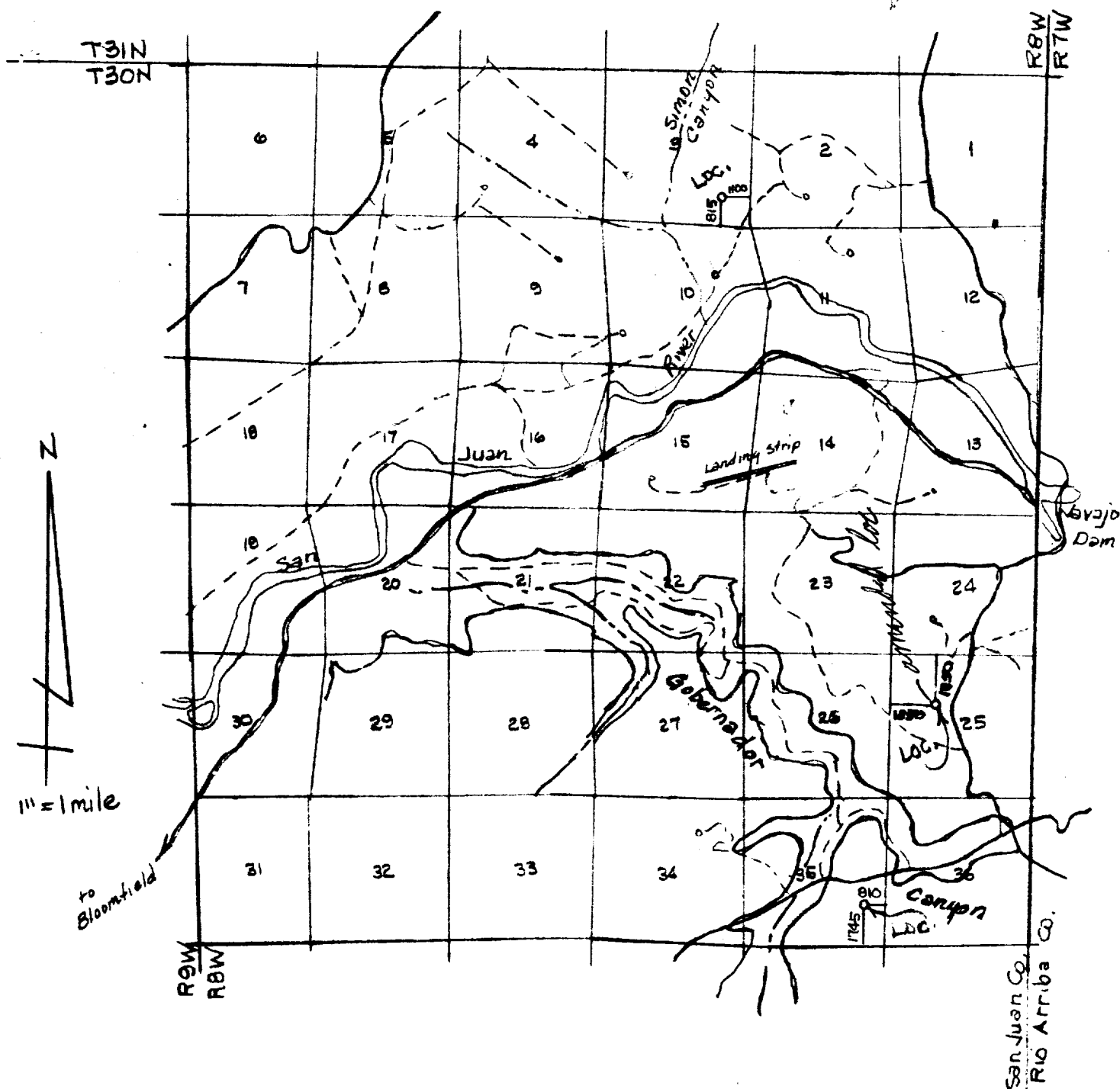
I hereby certify that the well location shown on this plat was plotted from field notes of actual surveys made by me or under my supervision, and that the same is true and correct to the best of my knowledge and belief.



Date Surveyed **19 June 1975**  
Registered Professional Engineer and/or Land Surveyor  
James P. Leese  
**James P. Leese**

Certificate No. \_\_\_\_\_





Vicinity map for  
 Tenneco Oil Company  
 Wells located in the SE/SE  
 of Sec. 3; SE/NW of Sec. 25;  
 NE/SE of Sec 35, T30N, R9W  
 N.M.P.M., San Juan Co., N.Mex  
 Scale 1"=1mile Date 4-12-75

San Juan Engineering Co.