

UNITED STATES
DEPARTMENT OF THE INTERIOR
BUREAU OF LAND MANAGEMENT

FORM APPROVED
Budget Bureau No. 1004-0135
Expires: March 31, 1993

SUNDRY NOTICES AND REPORTS ON WELLS

Do not use this form for proposals to drill or to deepen or reentry to a different reservoir.
Use "APPLICATION FOR PERMIT—" for such proposals

SUBMIT IN TRIPLICATE

1. Type of Well

☐ Oil Well ☒ Gas Well ☐ Other

2. Name of Operator

Amoco Production Company Attn: John Hampton

3. Address and Telephone No.

P.O. Box 800 Denver, Colorado 80201

4. Location of Well (Footage, Sec., T., R., M., or Survey Description)

825' FSL, 1030' FEL Sec. 6, T30N-R9W Unit: "P"

5. Lease Designation and Serial No.

SF-078129-A

6. If Indian, Allottee or Tribe Name

7. If Unit or CA, Agreement Designation

8. Well Name and No.

Florance Gas Com L #16A

9. API Well No.

30-045-21790

10. Field and Pool, or Exploratory Area

Blanco Mesaverde

11. County or Parish, State

San Juan, NM

12. CHECK APPROPRIATE BOX(S) TO INDICATE NATURE OF NOTICE, REPORT, OR OTHER DATA

TYPE OF SUBMISSION

- ☒ Notice of Intent
☐ Subsequent Report
☐ Final Abandonment Notice

TYPE OF ACTION

- ☐ Abandonment
☐ Recompletion
☐ Plugging Back
☐ Casing Repair
☐ Altering Casing
☒ Other Bradenhead Repair

- ☐ Change of Plans
☐ New Construction
☐ Non-Routine Fracturing
☐ Water Shut-Off
☐ Conversion to Injection
☐ Dispose Water

(Note: Report results of multiple completion on Well Completion or Recompletion Report and Log form.)

13. Describe Proposed or Completed Operations (Clearly state all pertinent details, and give pertinent dates, including estimated date of starting any proposed work. If well is directionally drilled, give subsurface locations and measured and true vertical depths for all markers and zones pertinent to this work.)

Amoco intends to perform the attached workover procedure required to eliminate bradenhead pressure.

In addition, Amoco also requests approval to construct a temporary 15'X15'X 5' blow pit for return fluids. This pit will be reclaimed if utilized, upon completion of this operation.

RECEIVED

MAR 5 1992

OIL CON. DIV. 1
DIST. 3

Please contact Cindy Burton (303) 830-5119 if you have any questions.

14. I hereby certify that the foregoing is true and correct

Signed

J. Hampton/CB

Title Sr. Staff Admin. Supv.

(This space for Federal or State office use)

Approved by

Conditions of approval, if any:

Title

NMOCD

MAR 03 1992

AREA MANAGER

GENERAL INSTRUCTIONS

This form is designed for submitting proposals to perform certain well operations, and reports of such operations when completed, as indicated, on Federal and Indian lands pursuant to applicable Federal law and regulations, and, if approved or accepted by any State, on all lands in such State, pursuant to applicable State law and regulations. Any necessary special in-

structions concerning the use of this form and the number of copies to be submitted, particularly with regard to local area, or regional procedures and practices, either are shown below or will be issued by, or may be obtained from, the local Federal and/or State office.

SPECIFIC INSTRUCTIONS

Item 4—If there are no applicable State requirements, locations on Federal or Indian land should be described in accordance with Federal requirements. Consult local State or Federal office for specific instructions.

Item 13—Proposals to abandon a well and subsequent reports of abandonment should include such special information as is required by local Federal and/or State offices. In addition, such proposals and reports should include reasons for the abandonment; data on any former or present productive

zones, or other zones with present significant fluid contents not sealed off by cement or otherwise; depths (top and bottom) and method of placement of cement plugs; mud or other material placed below, between and above plugs; amount, size, method of parting of any casing, liner or tubing pulled and the depth to top of any left in the hole; method of closing top of well; and date well site conditioned for final inspection looking to approval of the abandonment.

NOTICE

The Privacy Act of 1974 and the regulation in 43 CFR 2.48(d) provide that you be furnished the following information in connection with information required by this application.

AUTHORITY: 30 U.S.C. 181 et. seq., 351 et. seq., 25 U.S.C. et. seq.; 43 CFR 3160.

PRINCIPAL PURPOSE — The information is to be used to evaluate, when appropriate, approve applications, and report completion of secondary well operations, on a Federal or Indian lease.

ROUTINE USES:

- (1) Evaluate the equipment and procedures used during the proposed or completed subsequent well operations.
- (2) Request and grant approval to perform those actions covered by 43 CFR 3162.3-2(2).
- (3) Analyze future applications to drill or modify operations in light of data obtained and methods used.
- (4)(5) Information from the record and/or the record will be transferred to appropriate Federal, State, local or foreign agencies, when relevant to civil, criminal or regulatory investigations or prosecutions.

EFFECT OF NOT PROVIDING INFORMATION — Filing of this notice and report and disclosure of the information is mandatory once an oil or gas well is drilled.

The Paperwork Reduction Act of 1980 (44 U.S.C. 3501, et. seq.) requires us to inform you that:

This information is being collected in order to evaluate proposed and/or completed subsequent well operations on Federal or Indian oil and gas leases.

This information will be used to report subsequent operations once work is completed and when requested, to obtain approval for subsequent operations not previously authorized.

Response to this request is mandatory for the specific types of activities specified in 43 CFR Part 3160.

BURDEN HOURS STATEMENT

Public reporting burden for this form is estimated to average 25 minutes per response, including the time for reviewing instructions, gathering and maintaining data, and completing and reviewing the form. Direct comments regarding the burden estimate or any other aspect of this form to U.S. Department of the Interior, Bureau of Land Management, (Alternate) Bureau Clearance Officer, (WO-771), 18 and C Streets, N.W., Washington, D.C. 20240, and the Office of Management and Budget, Paperwork Reduction Project (1004-0135), Washington, D.C. 20503.

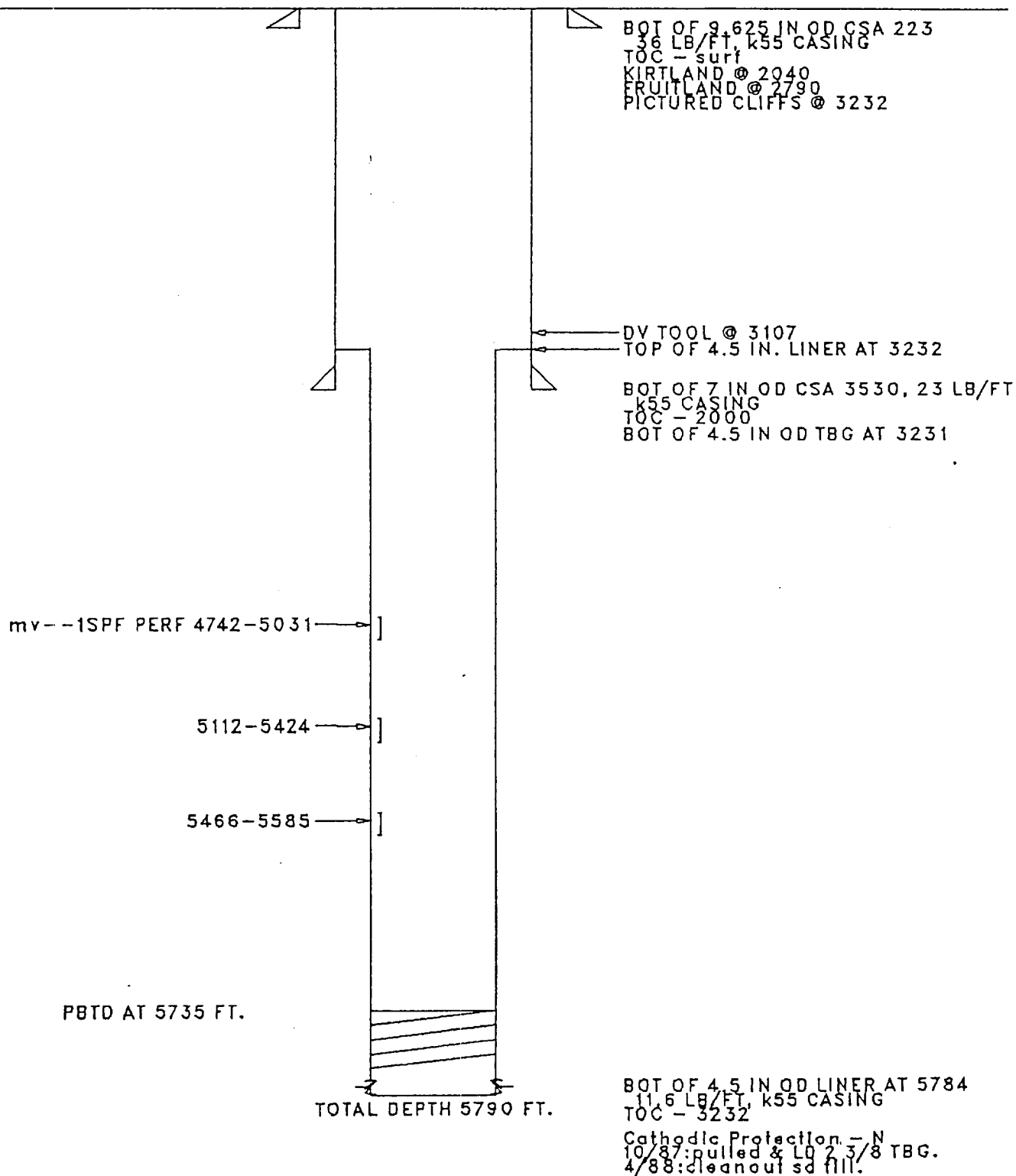
Workover Procedure
Florance Gas Com J #16A
Sec.06-T30N-R09W
San Juan County, NM

1. Contact Federal or State agency prior to starting repair work.
2. Catch gas and/or water sample off of bradenhead and casing, and have analyzed.
3. Install and/or test anchors.
4. MIRUSU. Check and record tubing, casing and bradenhead pressures.
5. Blow well down, kill well if necessary with 2% KCL.
6. Nipple down well head, nipple up and pressure test BOP's.
7. Trip in the hole and tag PBTD, check for fill, trip and tally out of hole with tubing checking condition of tubing.
8. Trip in the hole with bit and scraper for the intermediate casing and trip in to the top of the liner. Trip out of the hole with bit and scraper. Trip in hole with second bit and scraper and run from the top of the liner to the top of the perforations. A seating nipple and standing valve may be run in order to pressure test the tubing.
9. Trip in the hole with RBP and PKR. Set RBP 50-100 ft. above perforations. Trip out of hole one joint and set PKR and pressure test RBP to 1500 psi. Release PKR, spot sand on RBP and pressure test csg to 1000 psi. If no leak is found, trip out of hole with PKR and skip to step 11.
10. Trip out of hole isolating leak in liner, if any. If a liner leak is found, establish injection rate and check for circulation around liner top. Also, determine if there is a leak above the top of the liner. Trip out of hole with PKR.
11. Determine from well file and history, the interval a CBL needs to be run between the RBP and the surface. If a CBL is needed, run CBL over the interval necessary under 1000 psi and report results to Denver. Different size CBL tools may be required in the liner versus the intermediate casing.
12. If there are no casing leaks, skip to step 14.

13. If there is a leak in the liner and a leak above the top of the liner, trip in hole with a RBP that fits the liner and a PKR that fits the intermediate casing. Set RBP 30-60' below the top of the liner. Release PKR and trip out of hole isolating leak in the intermediate casing.
14. Based on the location of the leak, if any, and the results of the CBL, perforate casing if necessary with 4 JSPF and circulate dye if possible to determine cement volume. Depending on the depth of the hole and circulating pressure, a PKR or a cement retainer may be needed.
15. Mix and pump sufficient cement (class B or equivalent with two hour setting time) to circulate to surface, if circulation to surface is possible. Shut bradenhead valve and attempt to obtain a squeeze pressure and WOC.
16. Trip out of hole. Trip in the hole with bit and scraper and drill out cement and pressure test casing. Re-squeeze leaks if casing fails pressure test.
17. If cement is not circulated to the surface, it may be necessary to run another CBL (and/or temperature survey 8-10 hours after cementing) and repeat steps 14 thru 16.
18. Trip in the hole with retrieving head for RBP, circulate sand off of RBP and trip out of hole with plug.
19. If there is a leak in the liner top, trip in hole with a PKR. If there is no leak in the liner top, skip to step 22.
20. Mix and pump sufficient cement (class B or equivalent with two hour setting time) to squeeze liner top. Attempt to obtain a squeeze pressure and WOC.
21. Trip in the hole with bit and scraper and drill out cement and pressure test casing. Re-squeeze leak if liner top fails pressure test.
22. If there is a second RBP in the liner, trip in the hole with a retrieving head, circulate sand off of the RBP and trip out of hole with the plug.
23. If there is a leak in the liner or squeeze work is required based on the CBL, perforate casing, if necessary with 4 JSPF. Trip in hole with a cement retainer and set above the leak or perforations.
24. Mix and pump sufficient cement (class B or equivalent with two hour setting time) and attempt to obtain a squeeze pressure and WOC.

25. Trip in the hole with bit and scraper and drill out cement and pressure test casing. Re-squeeze leaks if casing fails pressure test.
26. Trip in the hole with retrieving head for RBP set in the liner, circulate sand off of RBP with 2% KCL and trip out of hole with plug.
27. Trip in hole with a sawtooth collar and/or bailer and clean out to PBTD and trip out of hole.
28. Trip in the hole with the production string (1/2 mule shoe on bottom and a seating nipple one joint off bottom), land tubing to original depth. Nipple down BOP's, nipple up well head.
29. Swab well in and put well on production.
30. Rig down move off service unit.

FLORANCE 016A 522
Location - 6P- 30N- 9W
SINGLE mv
Orig.Completion - 10/75
LAST FILE UPDATE - 10/91 BY CSW



BLM CONDITIONS OF APPROVAL

Operator Amoco Production Co. Well Name 16A Florance Gas Com J
Legal Location 825'FSL/1030'FEL Sec. 6 T. 30 N. R. 9 W.
Lease Number SF-078129-A Field Inspection Date n/a

The following stipulations will apply to this well unless a particular Surface Managing Agency (SMA) or private surface owner has supplied to BLM and the operator a contradictory environmental stipulation. The failure of the operator to comply with these requirements may result in the assessments or penalties pursuant to 43 CFR 3163.1 or 3163.2. A copy of these conditions of approval shall be present on the location during construction, drilling and reclamation activity.

An agreement between operator and fee land owner will take precedence over BLM surface stipulations unless (In reference to 43 CFR Part 3160) 1) BLM determines that operator's actions will affect adjacent Federal or Indian surface, or 2) operator does not maintain well area and lease premises in a workmanlike manner with due regard for safety, conservation and appearance, or 3) no such agreement exists, or 4) in the event of well abandonment, minimal Federal restoration requirements will be required.

1. Pits will be fenced during workover operation.
2. If liquids are left in the temporary pits for more than 24 hours after completion of the workover then these pits will be netted.