

UNITED STATES
DEPARTMENT OF THE INTERIOR
GEOLOGICAL SURVEY

30-045-21792

APPLICATION FOR PERMIT TO DRILL, DEEPEN, OR PLUG BACK

1a. TYPE OF WORK

DRILL ☒DEEPEN ☐PLUG BACK ☐

b. TYPE OF WELL

OIL
WELL ☐GAS
WELL ☒OTHER ☐SINGLE
ZONE ☐MULTIPLE
ZONE ☐

2. NAME OF OPERATOR

TENNECO OIL COMPANY

3. ADDRESS OF OPERATOR

1850 Lincoln Street, Denver, Colorado, 80203

4. LOCATION OF WELL (Report location clearly and in accordance with any State requirements.)

1840' FNL & 1660' FWL

At proposed prod. zone

14. DISTANCE IN MILES AND DIRECTION FROM NEAREST TOWN OR POST OFFICE*

15. DISTANCE FROM PROPOSED*
LOCATION TO NEAREST
PROPERTY OR LEASE LINE, FT.

1660'

(Also to nearest drlg. unit line, if any)

18. DISTANCE FROM PROPOSED LOCATION*

TO NEAREST WELL, DRILLING, COMPLETED,
OR APPLIED FOR, ON THIS LEASE, FT.

16. NO. OF ACRES IN LEASE

1275.56

17. NO. OF ACRES ASSIGNED
TO THIS WELL

220 323

19. PROPOSED DEPTH

5735

20. ROTARY OR CABLE TOOLS

Rotary

21. ELEVATIONS (Show whether DF, RT, CH, etc.)

6023 GL

22. APPROX. DATE WORK WILL START*

May 20, 1975

23.

PROPOSED CASING AND CEMENTING PROGRAM

SIZE OF HOLE	SIZE OF CASING	WEIGHT PER FOOT	SETTING DEPTH	QUANTITY OF CEMENT
12 1/2"	9 5/8"	36#	200'	Sufficient to circulate
8 3/4"	7"	20#	3300'	Cement back to surface casing

The proposed drilling program for this well is as follows:

Drill 12 1/2" hole + 200 and set 9 5/8" surface casing, circulate cement to surface.

Drill 8 3/4" hole + 3300 and set 7" casing, circulate cement to surface.

Drill 6 1/8" hole to TD using gas as the drilling fluid. Log the hole and hang a 4 1/2" liner from +3000 to TD and cement over the Mesa Verde interval.

BOP equipment is listed as point No. 4 & No. 5 in the attached 7 Point Program.

The well will be completed through casing perforations in the Mesa Verde formation and stimulated as necessary to establish commercial gas production.

MAY 12 1975

IN ABOVE SPACE DESCRIBE PROPOSED PROGRAM: If proposal is to deepen or plug back, give data on present productive zone and proposed new productive zone. If proposal is to drill or deepen directionally, give pertinent data on subsurface locations and measured and true vertical depths. Give blowout preventer program, if any.

24.

SIGNED

Lida J. Nagler

TITLE

Production Clerk

DATE

May 9, 1975

(This space for Federal or State office use)

PERMIT NO.

APPROVAL DATE

APPROVED BY

21

TITLE

DATE

CONDITIONS OF APPROVAL, IF ANY:

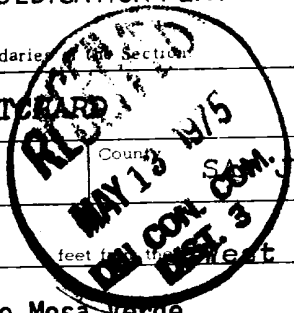
*See Instructions On Reverse Side

**NEW MEXICO OIL CONSERVATION COMMISSION
WELL LOCATION AND ACREAGE DEDICATION PLAT**

Form C-102
Supersedes C-128
Effective 1-1-65

All distances must be from the outer boundaries of the Section

Operator TENNECO OIL COMPANY			Lease PRITCHARD		Well No. 1A
Unit Letter F	Section 1	Township 30N	Range 9W	County SAN JUAN	
Actual Footage Location of Well: <div style="display: flex; justify-content: space-between;"> 1840 feet from the North line on 1660 feet from the West line </div>					
Ground Level Elev. 6023	Producing Formation Mesa Verde	Pool Blanco Mesa Verde	Dedicated Acreage 323 325 Acres		

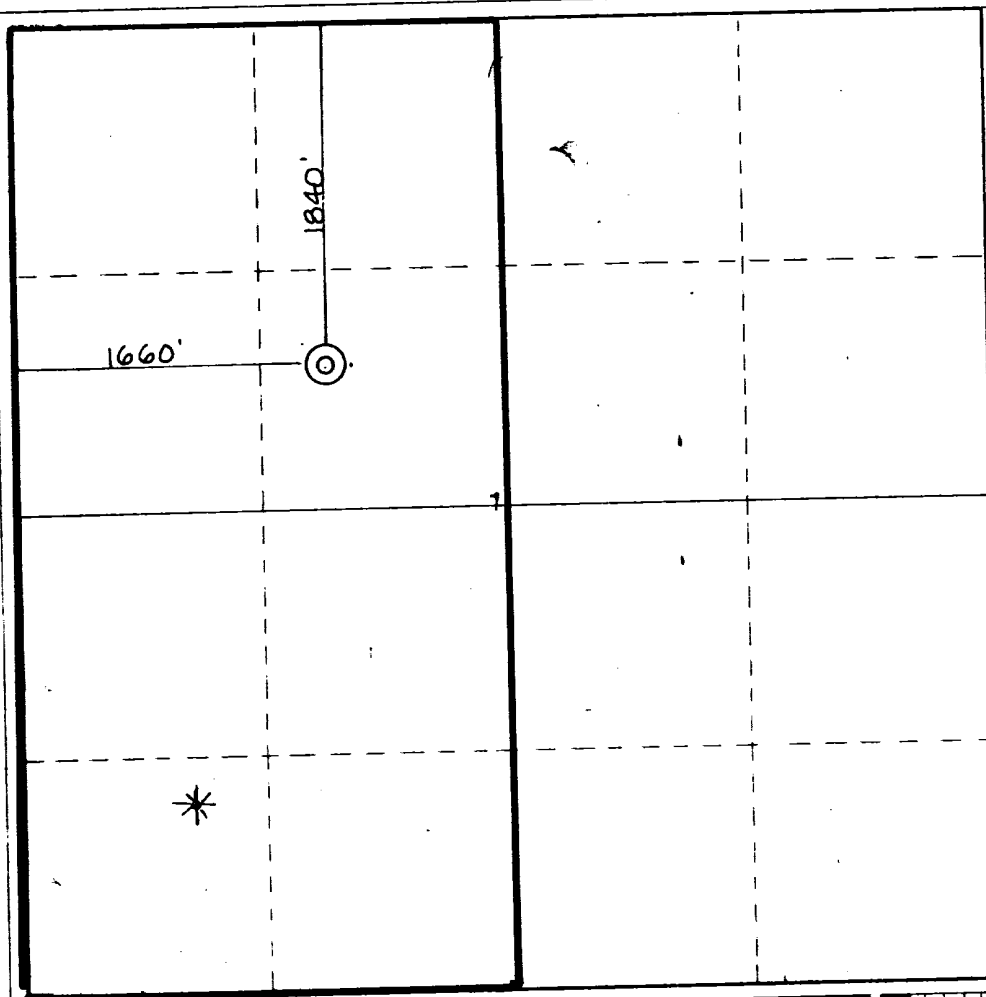


1. Outline the acreage dedicated to the subject well by colored pencil or hachure marks on the plat below.
2. If more than one lease is dedicated to the well, outline each and identify the ownership thereof (both as to working interest and royalty).
3. If more than one lease of different ownership is dedicated to the well, have the interests of all owners been consolidated by communitization, unitization, force-pooling, etc?

☐ Yes ☐ No If answer is "yes," type of consolidation _____

If answer is "no," list the owners and tract descriptions which have actually been consolidated. (Use reverse side of "this form if necessary.") _____

No allowable will be assigned to the well until all interests have been consolidated (by communitization, unitization, forced-pooling, or otherwise) or until a non-standard unit, eliminating such interests, has been approved by the Commission.



CERTIFICATION

I hereby certify that the information contained herein is true and complete to the best of my knowledge and belief.

Name Lida J. Stagner
 Position Production Clerk
 Company Tenneco Oil Company
 Date May 9, 1975

I hereby certify that the well location shown on this plat was plotted from field notes of actual surveys made by me or under my supervision, and that the same is true and correct to the best of my knowledge and belief.

17 April, 1975

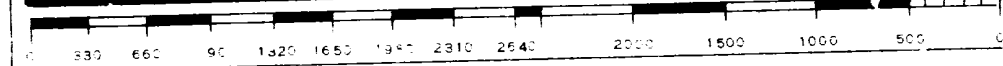
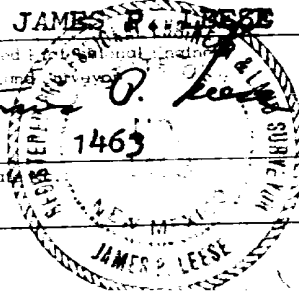
Date Surveyed

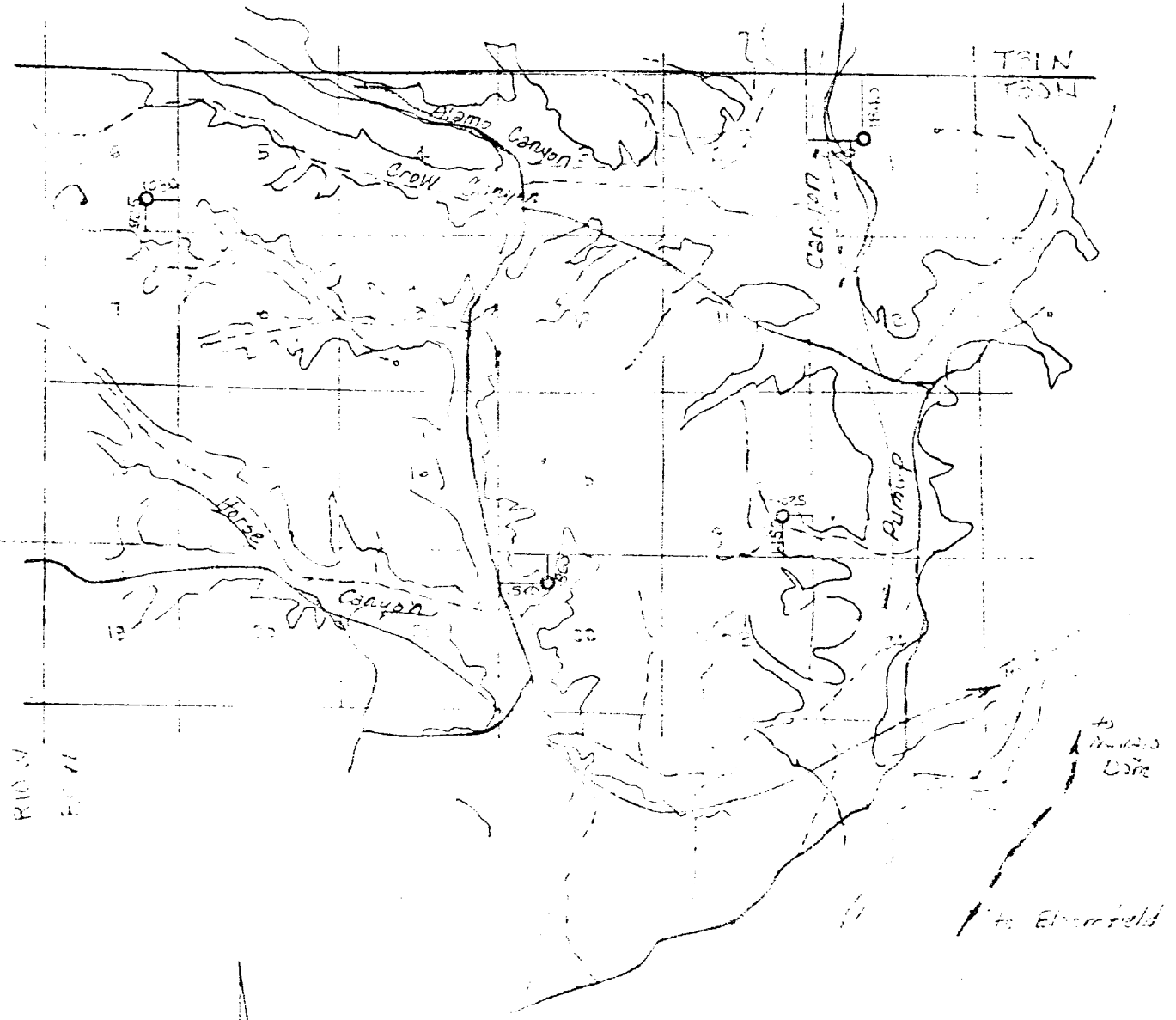
JAMES P. LEESE

Registered Professional Land Surveyor

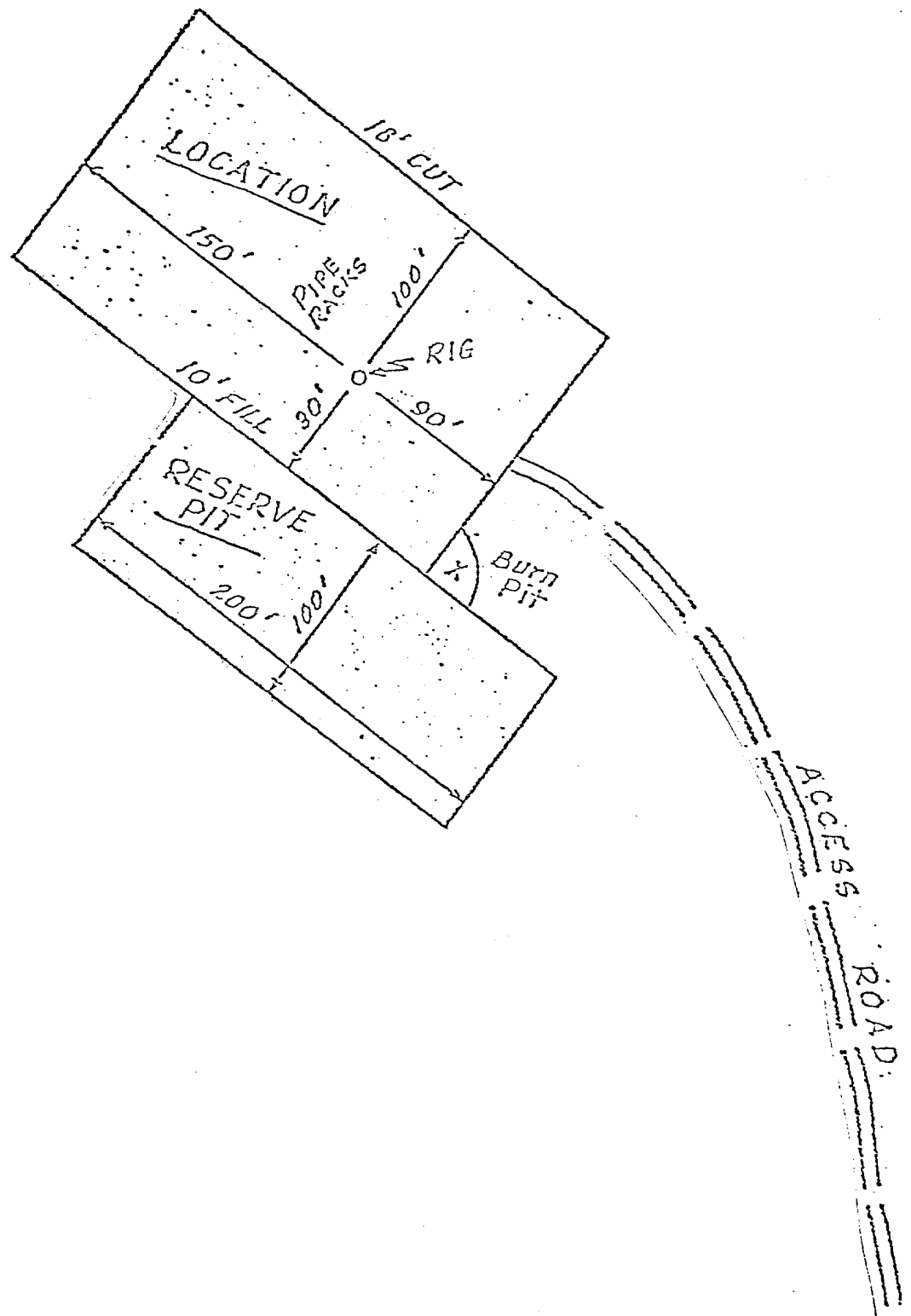
James P. Leese
1463

Certification





Looking at the
 terrain of the area
 was to find in the SEPT
 31st of the year 1914
 the first of the
 14th of the year 1914
 the R9 - 11th of the
 14th of the year 1914



SURFACE USE PLAN

1. Shown on attached map.
2. Shown on attached map. Approximately 200' of 16' wide road will be required.
3. Shown on attached map.
4. Shown on attached map.
5. This is expected to be a dry gas well, therefore, a tank battery will not be required.
6. Water will be hauled from the San Juan River or nearest wash.
7. All waste material will be buried in reserve pit at time of location clean up.
8. No camps will be associated with this operation.
9. No airstrip will be built for this operation.
10. Shown on attached diagram.
11. Upon completion or abandonment of this well, the location will be cleaned and levelled and a dry hole marker placed, if applicable.
12. The location is sandy, rocky, typical for the area. Vegetation is sage brush, scrub oak and scrub cedar.

7 POINT WELL CONTROL PLAN

1. Surface casing: 9 5/8", 24#, approximately 200, grade K-55, new condition.
2. Casinghead will be 10", 900 Series, 3,000 psi rating.
3. Intermediate casing - 7", 20#, K-55, will be set at \pm 3300, and cemented to surface casing.
4. Blowout preventors: Hydraulic, double ram, 10". One set of rams will be provided for each size drill pipe in the hole. One set of blind rams at all times. Fill line will be 2", kill line will be 2", choke relief line will be 2" with variable choke.
5. Auxiliary equipment:
 - (1) Kelly cock will be in use at all times.
 - (2) Stabbing valve to fit drill pipe will be present on floor at all times.
 - (3) Mud monitoring will be visual, no abnormal pressures are anticipated in this area.
 - (4) Rotating head will be used when drilling with gas.
6. Anticipated bottom-hole pressure:

This is an area of known pressures. Maximum anticipated pressure at 5700' T.D. is 1000 psi.
7. Drilling Fluids:

0 -200 Spud mud

200-3300 Gel water - low solids as needed to maintain good hole conditions

3300-T.D.Compressed gas

TENNECO OIL COMPANY

PROGNOSIS TO DRILL AND COMPLETE

DIVISION Rocky Mountain Division

DATE: April 25, 1975

LEASE: Pritchard

WELL NO.: 1-A

LOCATION: 1840' FNL & 1660' FNL
S 1, T 30 N, R 9 W

FIELD: Blanco Mesa Verde

San Juan County, New Mexico

ESTIMATED ELEVATION: 6023 GL

ESTIMATED TOTAL DEPTH: 5435

PROJECTED HORIZON: Blanco Mesa Verde

DRILLING, CASING AND CEMENT PROGRAM:

1. MIRURT, Drill 12 $\frac{1}{2}$ " hole to \pm 200'.
2. Set and cement 9 5/8" casing to T.D. and cement with sufficient cement to circ.
3. DD with 8 3/4" bit to 3300 feet.
4. Run 7" casing and cement back to surface casing.
5. DD of 7" using gas as the circulating fluid, do not drill more than 10' below 7" casing shoe until the hole has dried up completely and is dusting.
6. Drill the hole to T.D., log the hole dry as requested by drillsite geologist.
7. Run 4 $\frac{1}{2}$ " liner to T.D., load hole with mud and cement liner back to 7". Set liner hanger and POH w/drill pipe.
8. Estimated Tops:

Kirtland
Fruitland 2610

Pictured Cliffs 3165
Green Horn Shale 4635

Cliff House 4935
Point Lookout 5405

0 - 200 Feet spud mud

200 - ± 3300 Gel chemical - low solids as needed to maintain good hole conditions.

CORING AND TESTING PROGRAM:

None

DEVIATION SURVEYS:

1. Survey surface hole at 100' intervals. Maximum allowable deviation at 200 is 1/2°.
2. FROM SURFACE TO TOTAL DEPTH DEVIATION SURVEYS MUST BE TAKEN EVERY 500' OR EACH TRIP WHICHEVER IS FIRST. This may entail running the TOTCO on wireline. Record each survey on the A.A.O.D.C. Drilling Report sheet. Maximum allowable change in deviation is 1° per 100'.

SAMPLES:

200 - 3300 30' samples

3300 to T.D. 10' samples

WELL SURVEYS:

GR - Induction

GR - FDC

B.O.P.:

PREVENTORS MUST BE CHECKED FOR OPERATION EVERY 24 HOURS, AND THE CHECK MUST BE RECORDED ON THE A.A.O.D.C. DRILLING REPORT SHEET.

REPORTS:

1. A 6:00 A.M. drilling report including depth, formation, time distribution, mud properties, bit record, weight on bit, rotary speed, pump pressure, daily and cumulative water used, daily and cumulative mud cost and other pertinent information to be called in to Tenneco Oil Company, Denver, Colorado

Call the following numbers:

255-1995 - Report Box - automatic answering receiver that will take calls anytime day or night.

292-9920 - Phyllis Matera - 7:45 A.M. to 8:30 A.M. Monday morning report to include separate reports for Saturday, Sunday and Monday.

2. The yellow sheet of the A.A.O.D.C. report filled out completely, the original copy of the drilling time recorder, copies of water tickets and copies of any other invoices signed and received for Tenneco Oil Company will be mailed daily to:

Tenneco Oil Company
Suite 1200 - Lincoln Tower Building
Denver, Colorado 80203

3. In cases of emergencies, call the following:

D. E. Brown (303) 771-8297