

TENNECO OIL COMPANY

PROGNOSIS TO DRILL AND COMPLETE

DIVISION Rocky Mountain Division

DATE: July 28, 1975

LEASE: Florence

WELL NO.: 19-A

LOCATION: 1100 FSL $\frac{1}{2}$ 800 FEL
S 3, T 30 N, R 9 W

FIELD: Blanco Mesa Verde

San Juan County, New Mexico

ESTIMATED ELEVATION: 5978 GL

ESTIMATED TOTAL DEPTH: 5340

PROJECTED HORIZON: Blanco Mesa Verde

DRILLING, CASING AND CEMENT PROGRAM:

1. MIRURT, Drill 12½" hole to \pm 200'.
2. Set and cement 9 5/8" casing to T.D. and cement with sufficient cement to circ.
3. DO with 8 3/4" bit to \pm 3200 feet.
4. Run 7" casing and cement back to surface casing.
5. DO of 7" using gas as the circulating fluid, do not drill more than 10' below 7" casing shoe until the hole has dried up completely and is dusting.
6. Drill the hole to T.D., log the hole dry as requested by drillsite geologist.
7. Run 4½" liner to T.D., load hole with mud and cement liner back to 7". Set liner hanger and POH w/drill pipe.
8. Estimated Tops:

Kirtland 1640
Fruitland

Pictured Cliffs 2800
Green Horn Shale 4237

Cliff House 4420
Point Lookout 5030

0 - 200 Feet spud mud

200 - + 3200 Gal chemical - low solids as needed to maintain good hole conditions.

CORING AND TESTING PROGRAM:

None

DEVIATION SURVEYS:

1. Survey surface hole at 100' intervals. Maximum allowable deviation at 200 is $1/2^{\circ}$.
2. FROM SURFACE TO TOTAL DEPTH DEVIATION SURVEYS MUST BE TAKEN EVERY 500' OR EACH TRIP WHICHEVER IS FIRST. This may entail running the TOTCO on wireline. Record each survey on the A.A.O.D.C. Drilling Report sheet. Maximum allowable change in deviation is 1° per 100'.

SAMPLES:

200 - _____ 30' samples
_____ to T.D. 10' samples

WELL SURVEYS:

GR - Induction - Temperature

GR - FDC

B.O.P.:

PREVENTORS MUST BE CHECKED FOR OPERATION EVERY 24 HOURS, AND THE CHECK MUST BE RECORDED ON THE A.A.O.D.C. DRILLING REPORT SHEET.

REPORTS:

1. A 6:00 A.M. drilling report including depth, formation, time distribution, mud properties, bit record, weight on bit, rotary speed, pump pressure, daily and cumulative water used, daily and cumulative mud cost and other pertinent information to be called in to Tenneco Oil Company, Denver, Colorado.

Call the following numbers:

255-1995 - Report Box - automatic answering receiver that will take calls anytime day or night.

292-9920 - Phyllis Matera - 7:45 A.M. to 8:30 A.M. Monday morning report to include separate reports for Saturday, Sunday and Monday.

2. The yellow sheet of the A.A.O.D.C. report filled out completely, the original copy of the drilling time recorder, copies of water tickets and copies of any other invoices signed and received for Tenneco Oil Company will be mailed daily to:

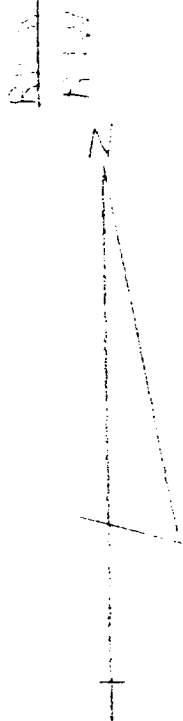
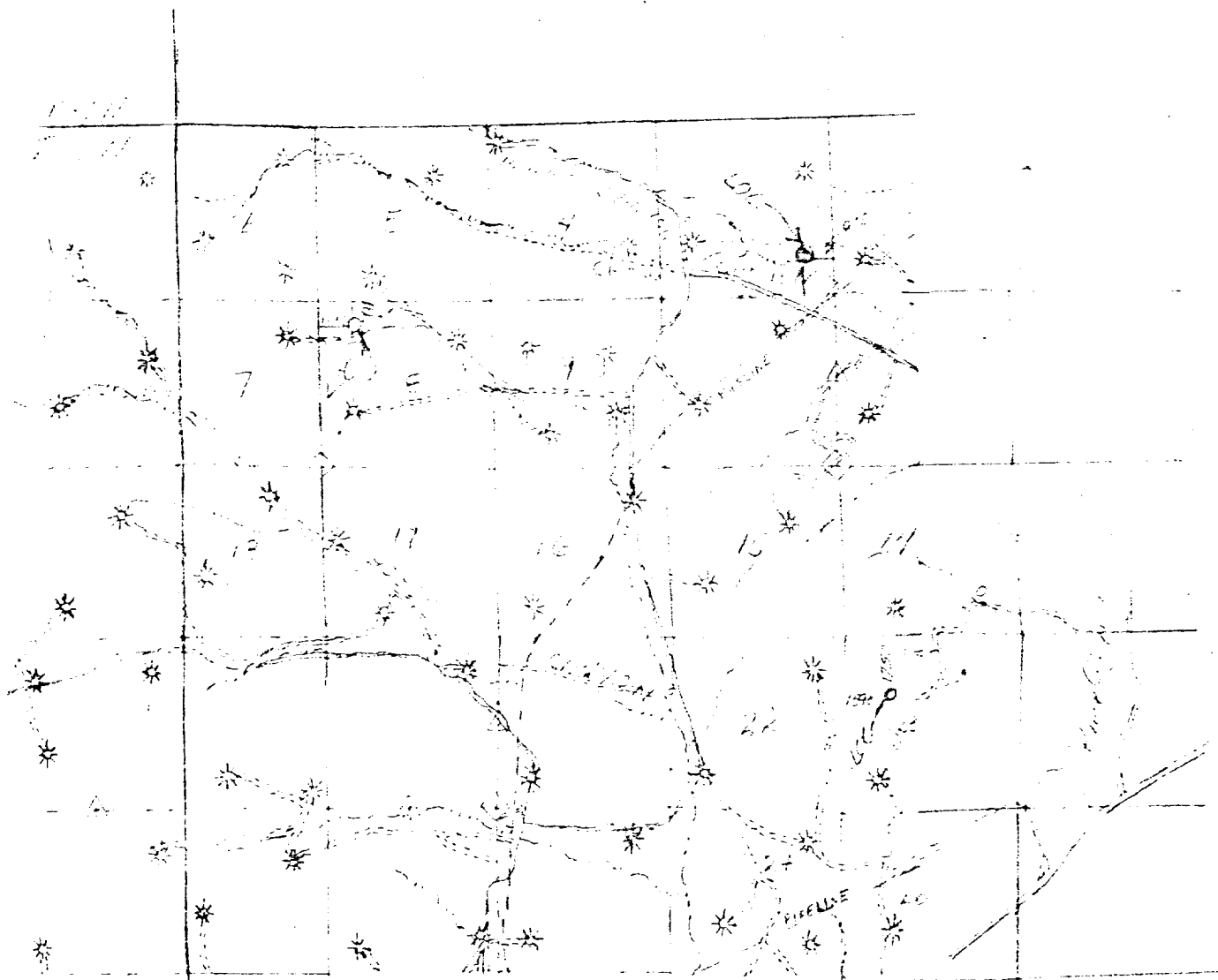
Tenneco Oil Company
Suite 1200 - Lincoln Tower Building
Denver, Colorado 80203

3. In cases of emergencies, call the following:

D. E. Brown (303) 771-6297

SURFACE USE PLAN

1. Shown on attached map.
2. Shown on attached map. Approximately 200' of 16' wide road will be required.
3. Shown on attached map.
4. Shown on attached map.
5. This is expected to be a dry gas well, therefore, a tank battery will not be required.
6. Water will be hauled from the San Juan River or nearest wash.
7. All waste material will be buried in reserve pit at time of location clean up.
8. No camps will be associated with this operation.
9. No airstrip will be built for this operation.
10. Shown on attached diagram.
11. Upon completion or abandonment of this well, the location will be cleaned and levelled and a dry hole marker placed, if applicable.
12. The location is sandy, rocky, typical for the area. Vegetation is sage brush, scrub oak and scrub cedar.

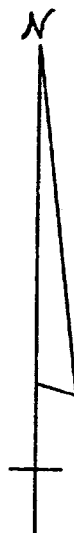
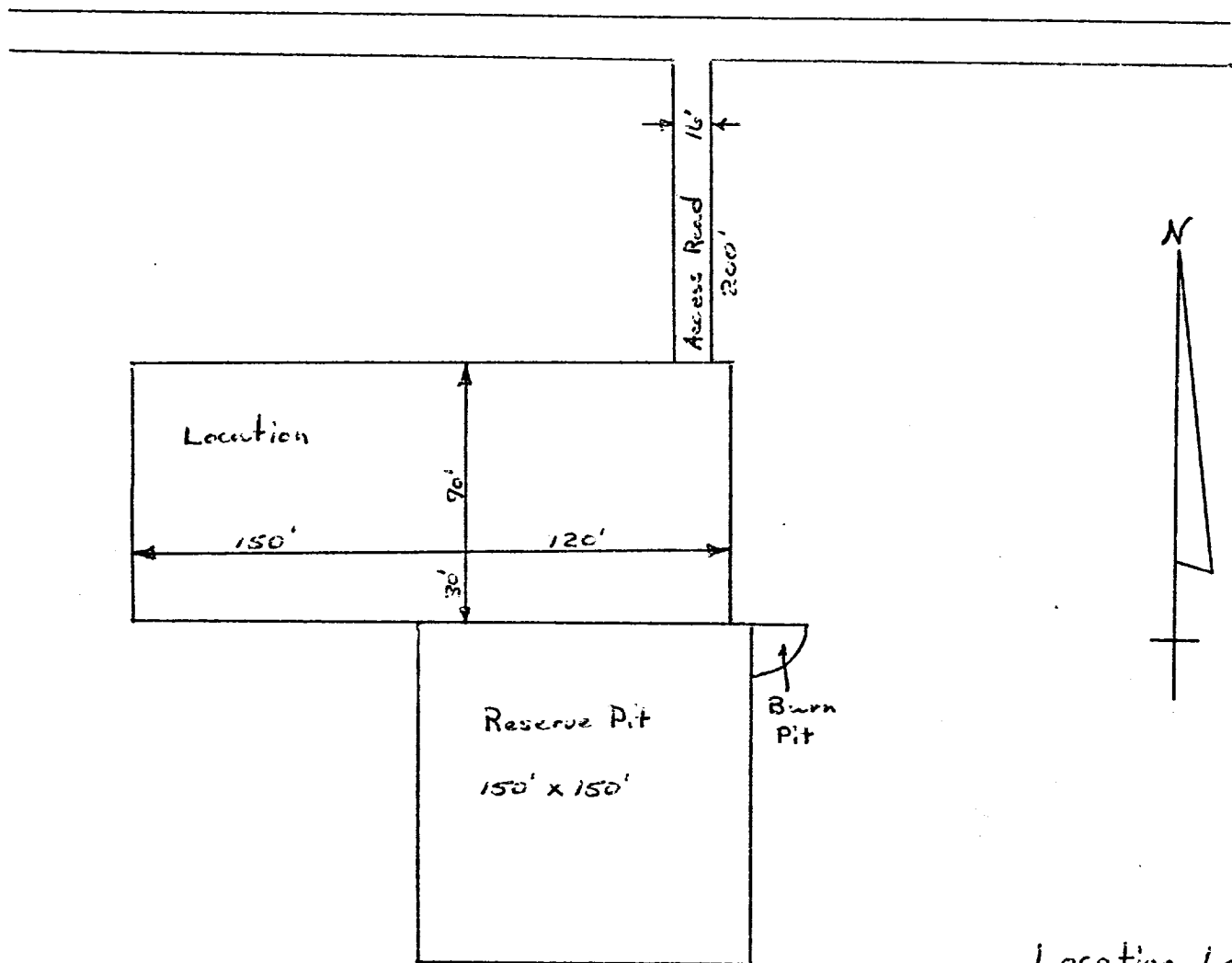


1" = 1 mile

Vicinity map of
 Tameco Oil Company
 showing
 Wells location in Section 3,
 T30N, R14W, N1/2 Sec 5, T42N,
 R14W, N1/2 Sec 5,
 New Mexico.

Scale 1" = 1 mile Date 7-2-75

San Juan Engineering Co.



Location Layout

Florance 19-1

1100 FSL & 800 FEL

Sec. 3, T30N, R9W

San Juan Co., N.M.

Scale : 1" = 80'

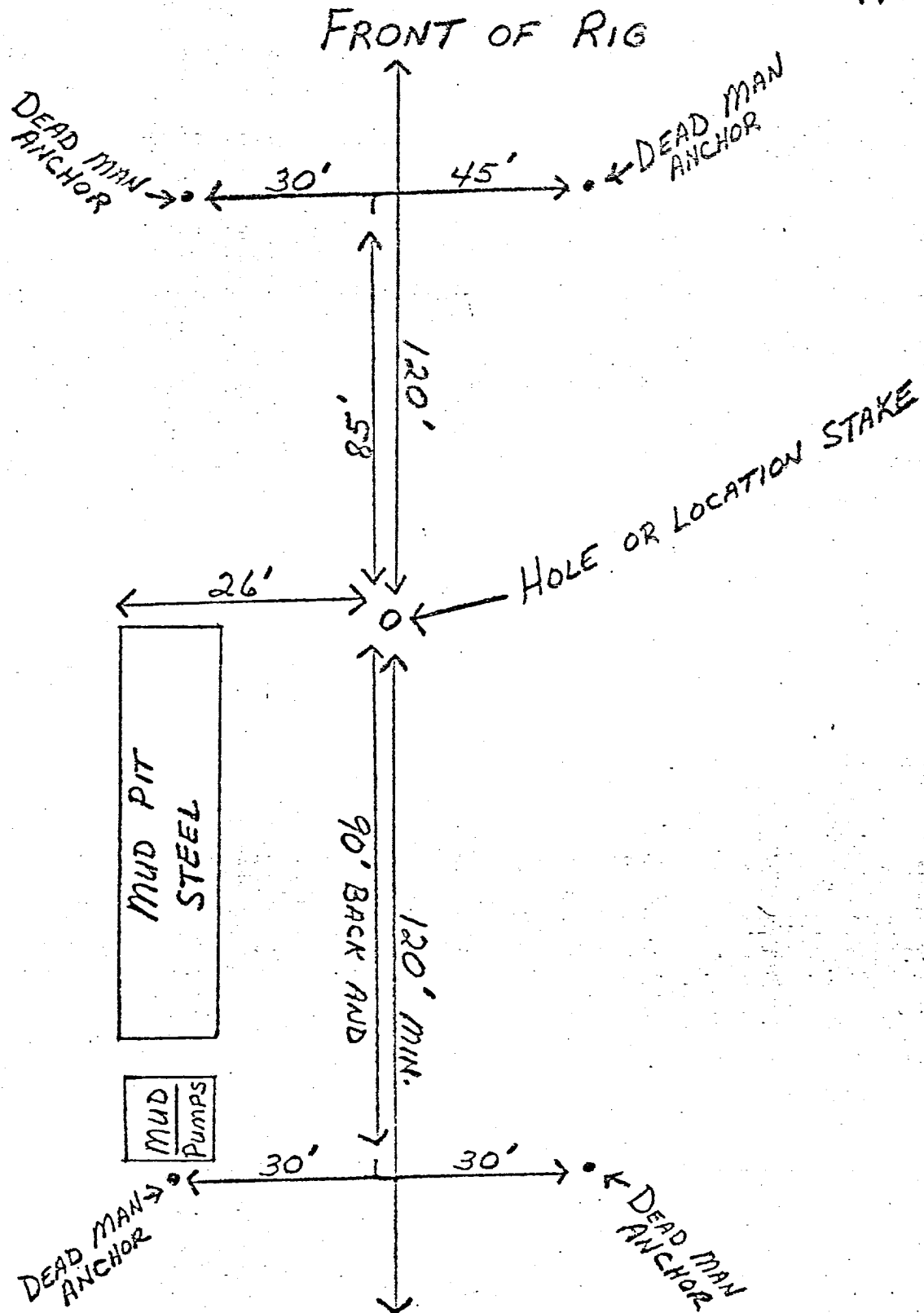
COLEMAN DRILLING CO.

P. O. BOX 1915

FARMINGTON, N. M. 87401

PHONE 505 / 323-6892

RIG #1



RESERVE PIT 150' X 150' X 5' DEEP

7 POINT WELL CONTROL PLAN

1. Surface casing: 9 5/8", 24#, approximately 200, grade K-55, new condition.
2. Casinghead will be 10", 900 Series, 3,000 psi rating.
3. Intermediate casing - 7", 20#, K-55, will be set at ±3200, and cemented to surface casing.
4. Blowout preventors: Hydraulic, double ram, 10". One set of rams will be provided for each size drill pipe in the hole. One set of blind rams at all times. Fill line will be 2", kill line will be 2", choke relief line will be 2" with variable choke.
5. Auxiliary equipment:
 - (1) Kelly cock will be in use at all times.
 - (2) Stabbing valve to fit drill pipe will be present on floor at all times.
 - (3) Mud monitoring will be visual, no abnormal pressures are anticipated in this area.
 - (4) Rotating head will be used when drilling with gas.
6. Anticipated bottom-hole pressure:

This is an area of known pressures. Maximum anticipated pressure at 5700' T.D. is 1000 psi.
7. Drilling Fluids:

0 -200 Spud mud

200-3200 Gel water - low solids as needed to maintain good hole conditions

3200-T.D. Compressed gas