

NEW MEXICO OIL CONSERVATION COMMISSION
WELL LOCATION AND ACREAGE DEDICATION PLAT

Form C-102
 Supersedes C-1
 Effective 1-1-55

All distances must be from the outer boundaries of the Section.

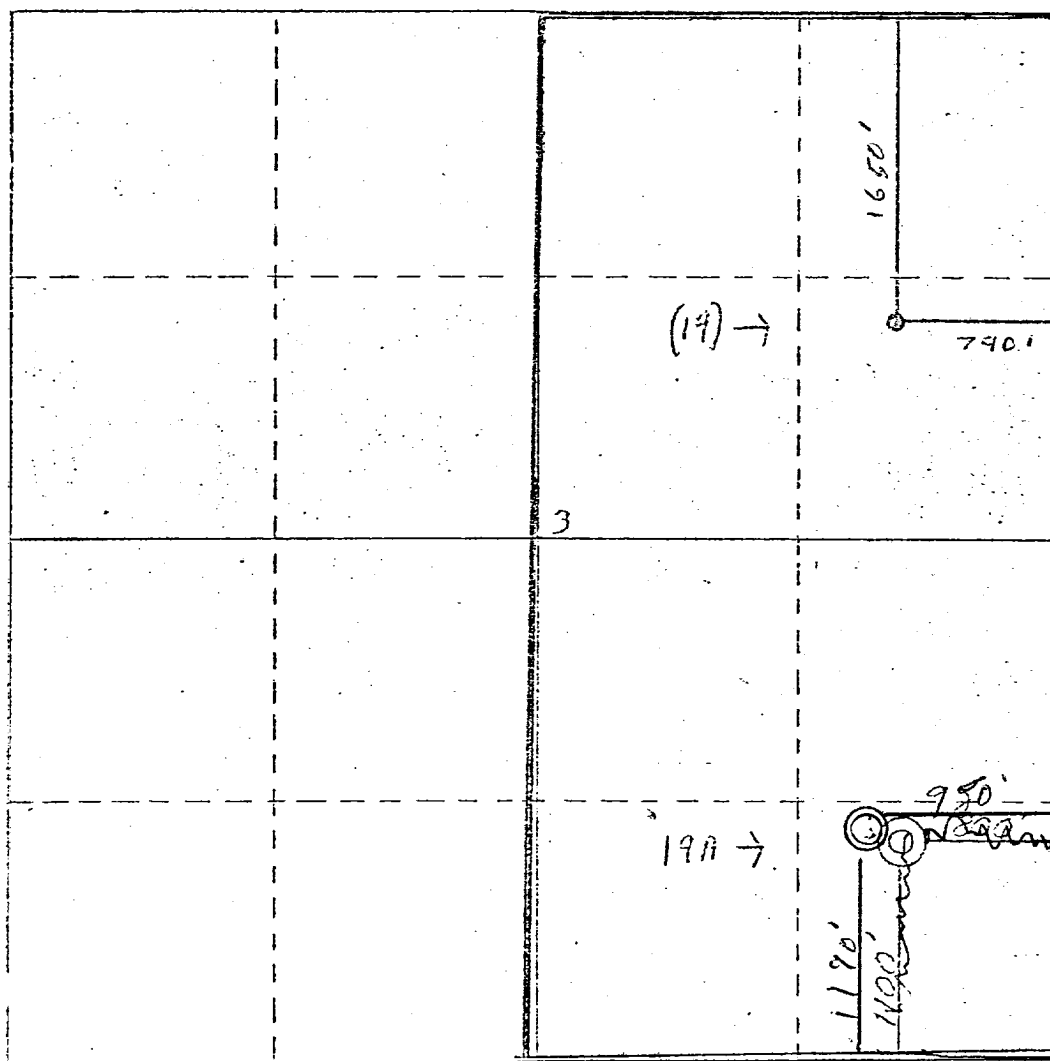
Operator TENNECO OIL COMPANY			Lease FLORENCE		Well No. 19 A
Unit Letter P	Section 3	Township 30 NORTH	Range 9 WEST	County SAN JUAN	
Actual Footage Location of Well:					
1190' feet from the SOUTH line and		950' feet from the EAST line			
Ground Level Elev. 5973	Producing Formation Blanco Mesa Verde	Pool Blanco Mesa Verde	Dedicated Acreage 321.38		E/A Acres

1. Outline the acreage dedicated to the subject well by colored pencil or hatchure marks on the plat below.
2. If more than one lease is dedicated to the well, outline each and identify the ownership thereof (both as to working interest and royalty).
3. If more than one lease of different ownership is dedicated to the well, have the interests of all owners been consolidated by communitization, unitization, force-pooling, etc?

☐ Yes ☐ No If answer is "yes," type of consolidation _____

If answer is "no," list the owners and tract descriptions which have actually been consolidated. (Use reverse side of this form if necessary.) _____

No allowable will be assigned to the well until all interests have been consolidated (by communitization, unitization, forced-pooling, or otherwise) or until a non-standard unit, eliminating such interests, has been approved by the Commission.



CERTIFICATION

I hereby certify that the information contained herein is true and complete to the best of my knowledge and belief.

Name *Paul F. Hulse*
 Position **Production Clerk**

Company **Tenneco Oil Clerk**

Date *August 12, 1975*

I hereby certify that the well location shown on this plat was located from field notes of a high survey made by me or under my supervision and that the same is true and correct to the best of my knowledge and belief.

Date Surveyed **23 July 1975**

Registered Professional Engineer
 and/or Land Surveyor
James P. Lease
James P. Lease

Comstitute No. **1463**