

UNITED STATES
DEPARTMENT OF THE INTERIOR
GEOLOGICAL SURVEY

30-045-21867

5. LEASE DESIGNATION AND SERIAL NO.
14-20-0603-6396. IF INDIAN, ALLOTTEE OR TRIBE NAME
Navajo

7. UNIT AGREEMENT NAME

8. FARM OR LEASE NAME
King Kong Lease9. WELL NO.
King Kong # 22

10. FIELD AND POOL, OR WILDCAT

Salt Creek

11. SEC., T., R., M., OR BLK.
AND SURVEY OR AREA

Sec. 4-T30N-R17W

12. COUNTY OR PARISH 13. STATE

San Juan New Mexico

APPLICATION FOR PERMIT TO DRILL, DEEPEN, OR PLUG BACK

1a. TYPE OF WORK

DRILL ☒DEEPEN ☐PLUG BACK ☐

b. TYPE OF WELL

OIL
WELL ☒GAS
WELL ☐

OTHER

SINGLE
ZONEMULTIPLE
ZONE ☐

2. NAME OF OPERATOR

R. A. Crane, Jr.

3. ADDRESS OF OPERATOR

2802 E. 20th Farmington, New Mexico

4. LOCATION OF WELL (Report location clearly and in accordance with any State requirements.)

At surface

At proposed prod. zone

1480' FNL

1980' FEL

14. DISTANCE IN MILES AND DIRECTION FROM NEAREST TOWN OR POST OFFICE*

4 miles Northeast of Shiprock, New Mexico

15. DISTANCE FROM PROPOSED*

LOCATION TO NEAREST
PROPERTY OR LEASE LINE, FT.
(Also to nearest drlg. unit line, if any)

1480'

16. NO. OF ACRES IN LEASE

640 acres

17. NO. OF ACRES ASSIGNED
TO THIS WELL

40 acres

18. DISTANCE FROM PROPOSED LOCATION*
TO NEAREST WELL, DRILLING, COMPLETED,
OR APPLIED FOR, ON THIS LEASE, FT.

330'

19. PROPOSED DEPTH

1100'

20. ROTARY OR CABLE TOOLS

Rotary

21. ELEVATIONS (Show whether DF, RT, GR, etc.)

5128' GR.

22. APPROX. DATE WORK WILL START*

August 18, 1975

23. PROPOSED CASING AND CEMENTING PROGRAM

SIZE OF HOLE	SIZE OF CASING	WEIGHT PER FOOT	SETTING DEPTH	QUANTITY OF CEMENT
7 7/8"	6 5/8"	16#	30'	15 sacks
4 3/4"	2 7/8"	6.5#	1100'	50 sacks

Plan to air drill 5 5/8" hole to test the Dakota formation.

RECEIVED

AUG 18 1975

U. S. GEOLOGICAL SURVEY
FARMINGTON, N. M.

IN ABOVE SPACE DESCRIBE PROPOSED PROGRAM: If proposal is to deepen or plug back, give data on present productive zone and proposed new productive zone. If proposal is to drill or deepen directionally, give pertinent data on subsurface locations and measured and true vertical depths. Give blowout preventer program, if any.

24.

SIGNED

Serena M. Anderson
Serena M. Anderson

TITLE

Secretary

DATE

August 18, 1975

(This space for Federal or State office use)

PERMIT NO.

APPROVAL DATE

APPROVED BY

TITLE

DATE

CONDITIONS OF APPROVAL, IF ANY:

Held C-104 for NSL

*See Instructions On Reverse Side

**NEW MEXICO OIL CONSERVATION COMMISSION
WELL LOCATION AND ACREAGE DEDICATION PLAT**

Form C-101
Supersedes C-128
Effective 1-1-65

All distances must be from the outer boundaries of the Section.

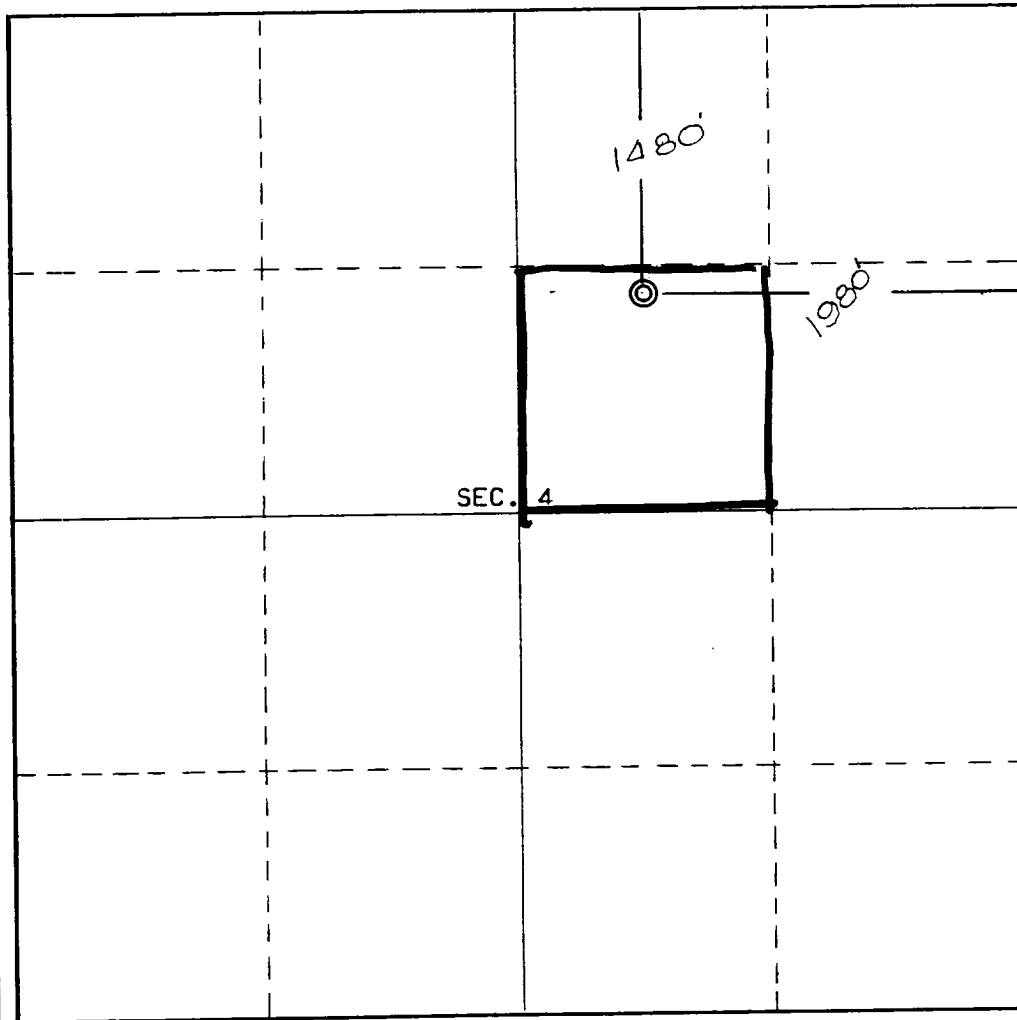
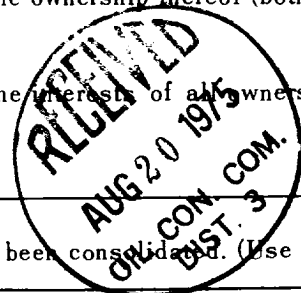
Operator Craneco			Lease King Kong Lease-#14-20-0603-639		Well No. 22
Unit Letter G	Section 4	Township 30 North	Range 17 West	County San Juan	
Actual Footage Location of Well: 1480 feet from the North line and 1980 feet from the East line					
Ground Level Elev. 5128	Producing Formation Dakota	Pool Salt Creek EXT		Dedicated Acreage: 40 Acres	

1. Outline the acreage dedicated to the subject well by colored pencil or hachure marks on the plat below.
2. If more than one lease is dedicated to the well, outline each and identify the ownership thereof (both as to working interest and royalty).
3. If more than one lease of different ownership is dedicated to the well, have the interests of all owners been consolidated by communitization, unitization, force-pooling, etc?

☐ Yes ☐ No If answer is "yes," type of consolidation _____

If answer is "no," list the owners and tract descriptions which have actually been consolidated. (Use reverse side of this form if necessary.) _____

No allowable will be assigned to the well until all interests have been consolidated (by communitization, unitization, forced-pooling, or otherwise) or until a non-standard unit, eliminating such interests, has been approved by the Commission.



CERTIFICATION

I hereby certify that the information contained herein is true and complete to the best of my knowledge and belief.

Serena M. Anderson

Name Serena M. Anderson

Position **Secretary**

Company **Craneco; R. A. Crane, Jr.**

Date **August 18, 1975**

I hereby certify that the well location shown on this plat was plotted from field notes of a registered survey made by me or under my supervision and that the same are true and correct to the best of my knowledge and belief.

**REGISTERED LAND SURVEYOR
E. V. ECHOHAWK
MEXICO**

Date Surveyed **August 15, 1975**

Registered Professional Engineer and/or Land Surveyor

E. V. Echohawk

Certificate No. **3602**
E.V. Echohawk LS

