

UNITED STATES
DEPARTMENT OF THE INTERIOR
GEOLOGICAL SURVEY

SUBMIT IN TRIPLICATE*
(Other instructions on
reverse side)

Form approved.
Budget Bureau No. 42-R1425.

30-045-21876

APPLICATION FOR PERMIT TO DRILL, DEEPEN, OR PLUG BACK

1a. TYPE OF WORK

DRILL ☒

DEEPEN ☐

PLUG BACK ☐

b. TYPE OF WELL

OIL
WELL ☐

GAS
WELL ☒

OTHER

SINGLE
ZONE ☒

MULTIPLE
ZONE ☐

2. NAME OF OPERATOR

AMOCO PRODUCTION COMPANY

3. ADDRESS OF OPERATOR

501 Airport Drive, Farmington, New Mexico 87401

4. LOCATION OF WELL (Report location clearly and in accordance with any State requirements*)

At surface

810' FNL and 1590' FEL, Section 33,

At proposed prod. zone

Same

14. DISTANCE IN MILES AND DIRECTION FROM NEAREST TOWN OR POST OFFICE

Approximately 3-1/2 miles northeast of Blanco, New Mexico

15. DISTANCE FROM PROPOSED*

LOCATION TO NEAREST
PROPERTY OR LEASE LINE, FT.
(Also to nearest drig. unit line, if any)

810'

16. NO. OF ACRES IN LEASE

320

17. NO. OF ACRES ASSIGNED
TO THIS WELL

320

18. DISTANCE FROM PROPOSED LOCATION*

TO NEAREST WELL, DRILLING, COMPLETED,
OR APPLIED FOR, ON THIS LEASE, FT.

600'

19. PROPOSED DEPTH

4900'

20. ROTARY OR CABLE TOOLS

Rotary

21. ELEVATIONS (Show whether DF, RT, GR, etc.)

5783' GL

22. APPROX. DATE WORK WILL START*

60 days

23.

PROPOSED CASING AND CEMENTING PROGRAM

| SIZE OF HOLE | SIZE OF CASING | WEIGHT PER FOOT | SETTING DEPTH | QUANTITY OF CEMENT |
|--------------|----------------|-----------------|---------------|--------------------|
| 12-1/4" | 9-5/8" | 36# | 350' | 100 sz. |
| 8-3/4" | 7" | 23# | 2700' | 500 sz. |
| 6-1/4" | 4-1/2" | 10.5# | 2500-4900' | 400 sz. |

Amoco proposes to drill the above well to replace Elliott Gas Com "F" No. 1 that was damaged beyond salvage in an attempted repair. The above well will be to develop the Mesaverde reservoir. The well will be drilled with rotary tools with mud as the circulating media. Casing will be set through the Mesaverde formation, and perforations and stimulation will be determined from analysis of open-hole logs.

Copy of Location Plat, Development Plan, Topomap, and location sketch are attached.

IN ABOVE SPACE DESCRIBE PROPOSED PROGRAM: If proposal is to deepen or plug back, give data on present productive zone and proposed new productive zone. If proposal is to drill or deepen directionally, give pertinent data on subsurface locations and measured and true vertical depths. Give blowout preventer program, if any.

24.

SIGNED

B. L. Hamilton

TITLE

Area Adm. Supvr.

DATE

August 28, 1975

(This space for Federal or State office use)

PERMIT NO.

APPROVAL DATE

APPROVED BY

CONDITIONS OF APPROVAL, IF ANY:

Okal

TITLE

RECEIVED

AUG 29 1975

U. S. GEOLOGICAL SURVEY
FARMINGTON, N. M.

*See Instructions On Reverse Side

Instructions

General: This form is designed for submitting proposals to perform certain well operations, as indicated, on all types of lands and leases for appropriate action by either a Federal or a State agency, or both, pursuant to applicable Federal and/or State laws and regulations. Any necessary special instructions concerning the use of this form and the number of copies to be submitted, particularly with regard to local, area, or regional procedures and practices, either are shown below or will be issued by, or may be obtained from, the local Federal and/or State office.

Item 1: If the proposal is to redrill to the same reservoir at a different subsurface location or to a new reservoir, use this form with appropriate notations. Consult applicable State or Federal regulations concerning subsequent work proposals or reports on the well.

Item 4: If there are no applicable State requirements, locations on Federal or Indian land should be described in accordance with Federal requirements. Consult local State or Federal office for specific instructions.

Item 14: Needed only when location of well cannot readily be found by road from the land or lease description. A plat, or plats, separate or on this reverse side, showing the roads to, and the surveyed location of, the well, and any other required information, should be furnished when required by Federal or State agency offices.

Items 15 and 18: If well is to be, or has been directionally drilled, give distances for subsurface location of hole in any present or objective production zone.

Item 22: Consult applicable Federal or State regulations, or appropriate officials, concerning approval of the proposal before operations are started.

U.S. GOVERNMENT PRINTING OFFICE : 1963-O-711-396
839-171



**NEW MEXICO OIL CONSERVATION COMMISSION
WELL LOCATION AND ACREAGE DEDICATION PLAT**

Form C-102
Supersedes C-128
Effective 1-1-65

All distances must be from the outer boundaries of the Section.

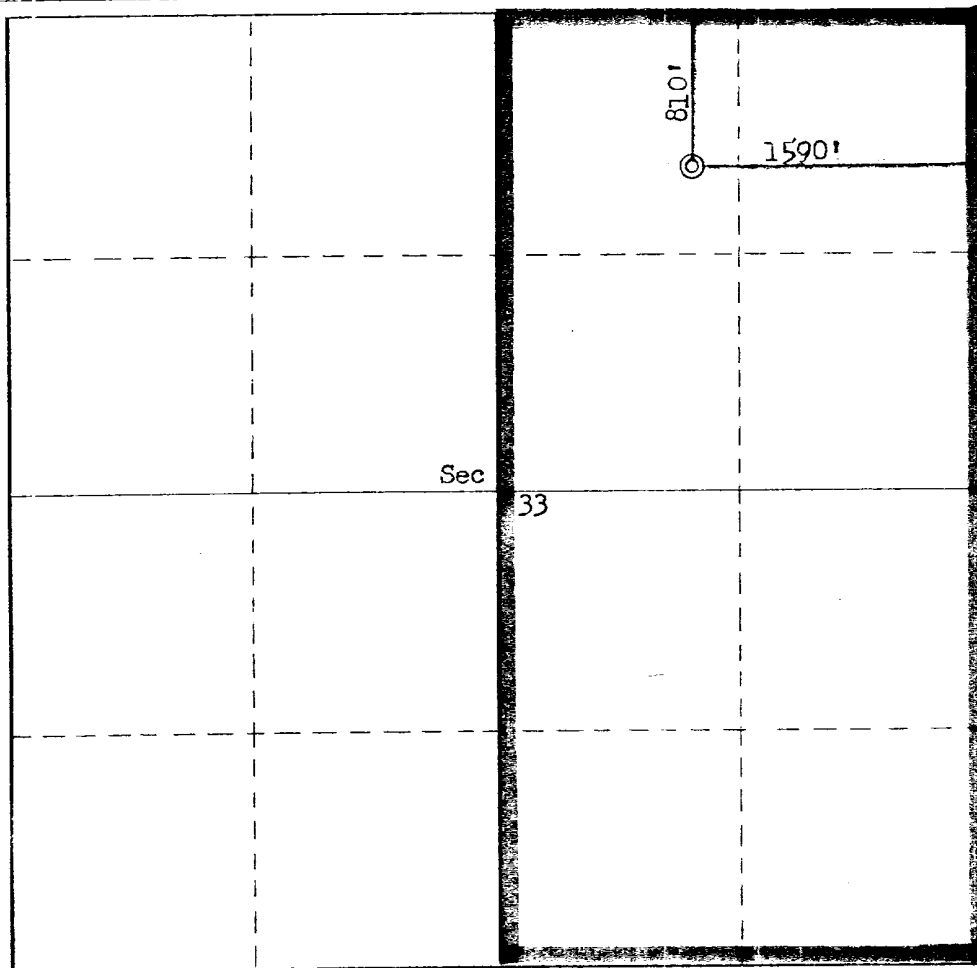
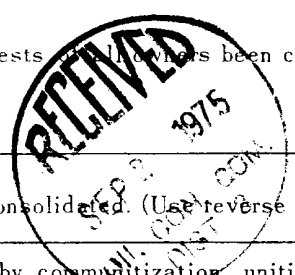
| | | | | | |
|---|--|------------------------|-----------------------------------|-------------------------------------|-----------------------|
| Operator Anoco Production Company | | | Lease Elliott Gas Com F | | Well No. 1R |
| Unit Letter B | Section 33 | Township 30N | Range 9W | County San Juan | |
| Actual Footage Location of Well: 810 feet from the North line and 1590 feet from the East line | | | | | |
| Ground Level Elev. 5783 | Producing Formation Mesa Verde | | Pool Blanco | Dedicated Acreage: 320 Acres | |

1. Outline the acreage dedicated to the subject well by colored pencil or hachure marks on the plat below.
2. If more than one lease is dedicated to the well, outline each and identify the ownership thereof (both as to working interest and royalty).
3. If more than one lease of different ownership is dedicated to the well, have the interests of all owners been consolidated by communitization, unitization, force-pooling, etc?

☐ Yes ☐ No If answer is "yes," type of consolidation _____

If answer is "no," list the owners and tract descriptions which have actually been consolidated. (Use reverse side of this form if necessary.) _____

No allowable will be assigned to the well until all interests have been consolidated (by communitization, unitization, forced-pooling, or otherwise) or until a non-standard unit, eliminating such interests, has been approved by the Commission.



CERTIFICATION

I hereby certify that the information contained herein is true and complete to the best of my knowledge and belief.

Name *R. E. McCloskey*

Position
Area Engineer

Company
AMOCO PRODUCTION COMPANY

Date
August 27, 1975

I hereby certify that the well location shown on this plat was plotted from field notes of actual surveys made by me or under my supervision, and that the same is true and correct to the best of my knowledge and belief.

Date Surveyed
August 13, 1975

Registered Professional Engineer and/or Land Surveyor

Fred B. Kerr Jr.
Fred B. Kerr Jr.

Certificate No.

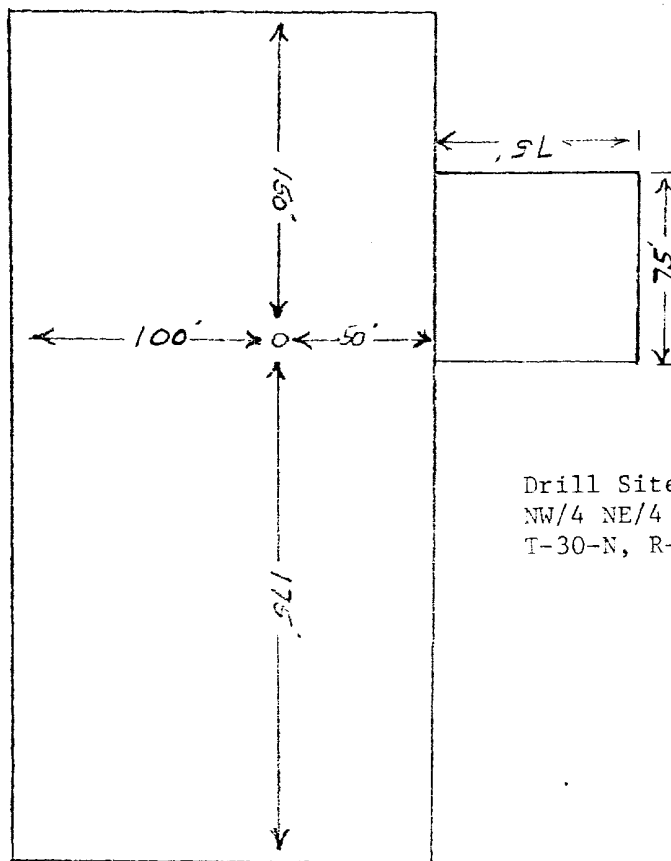
3950

DEVELOPMENT PLAN
ELLIOTT GAS COM "F" NO. 1R
810' FNL & 1590' FEL, SECTION 33, T-30-N, R-9-W
SAN JUAN COUNTY, NEW MEXICO

The proposed location is approximately 600' west of the original well on the Communitized Acreage, and approximately 1000' of new road will be constructed.

There are no camps or airstrips in the immediate vicinity. Archaeological clearance to drill this location has been obtained from the proper authorities. Arrangements have been made to truck water from the Citizens Ditch approximately 3-1/2 miles from the location. Amoco's standard blowout prevention will be employed; drawing for blowout preventer design attached.

Upon completion of the well, the location will be cleaned, leveled, and reserve pit backfilled.



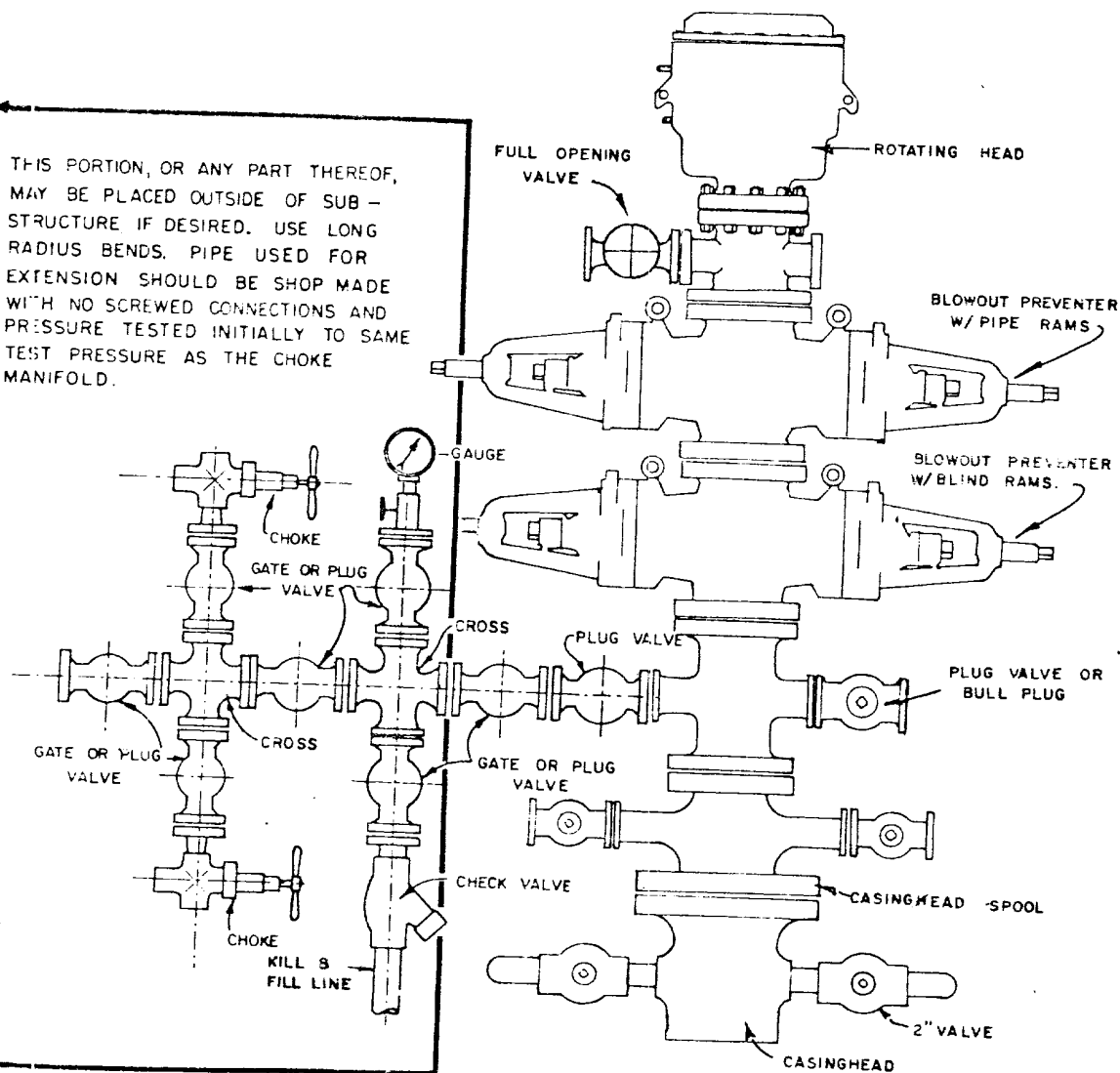
Reserve
Pit

Drill Site
NW/4 NE/4 Section 33,
T-30-N, R-9-W

Approximate 1.25 Acres

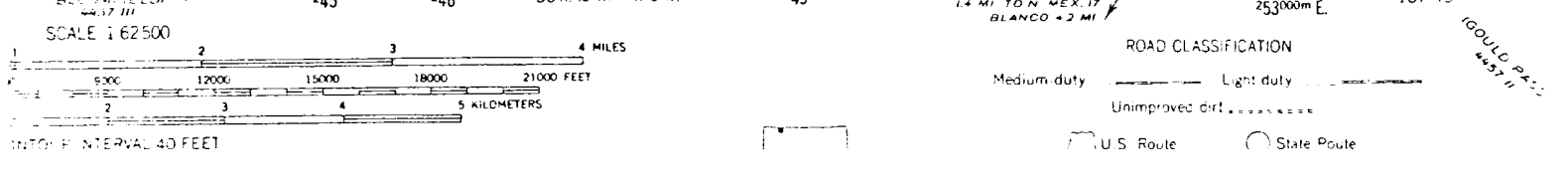
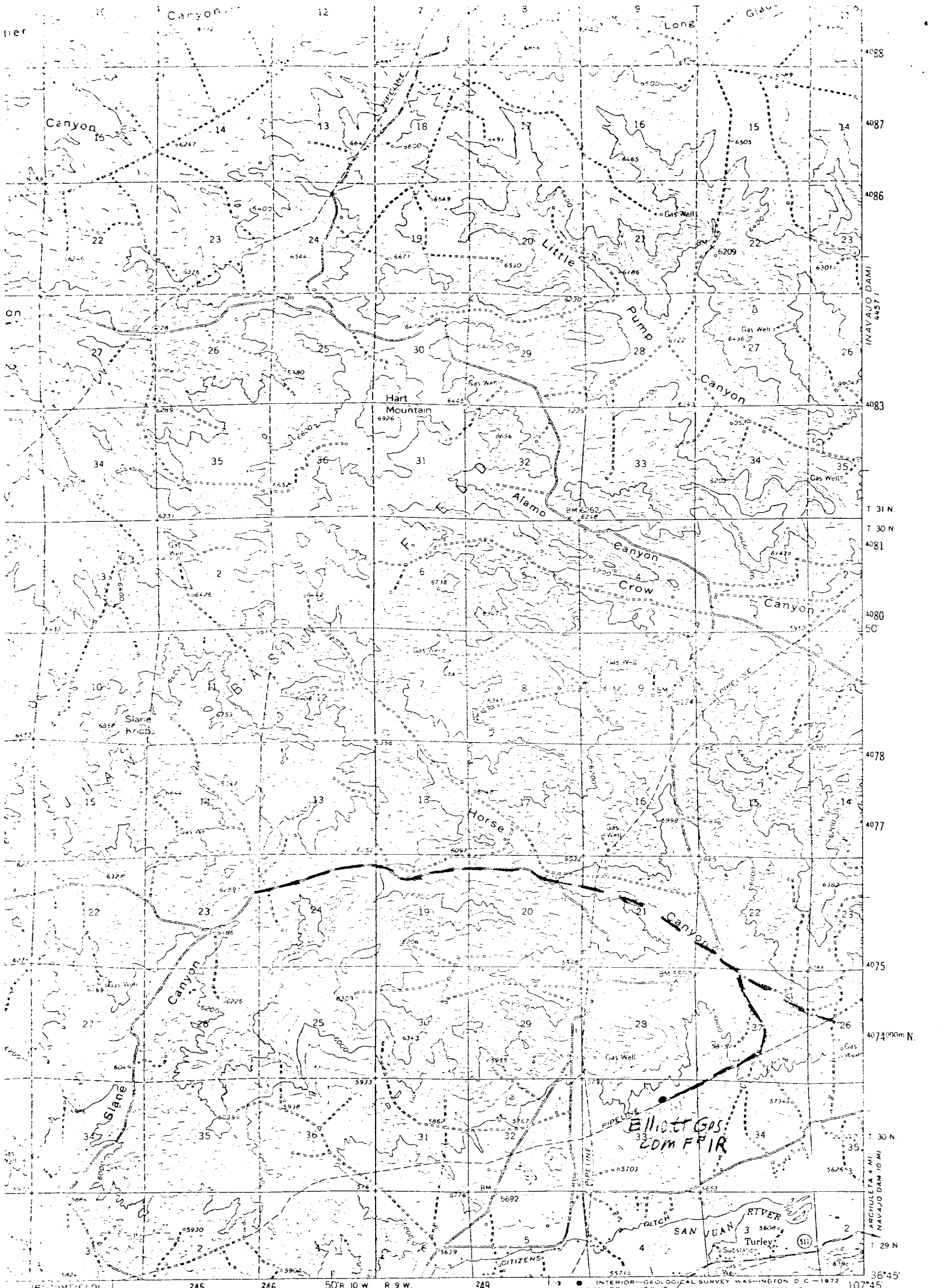
| | |
|--|-------------------------|
| Amoco Production Company | SCALE: None |
| DRILLING LOCATION DIAGRAM ELLIOTT GAS COM "F" NO. 1R - BLANCO MESAVERDE FIELD | DRG. 75-MFT-8-27 NO. |

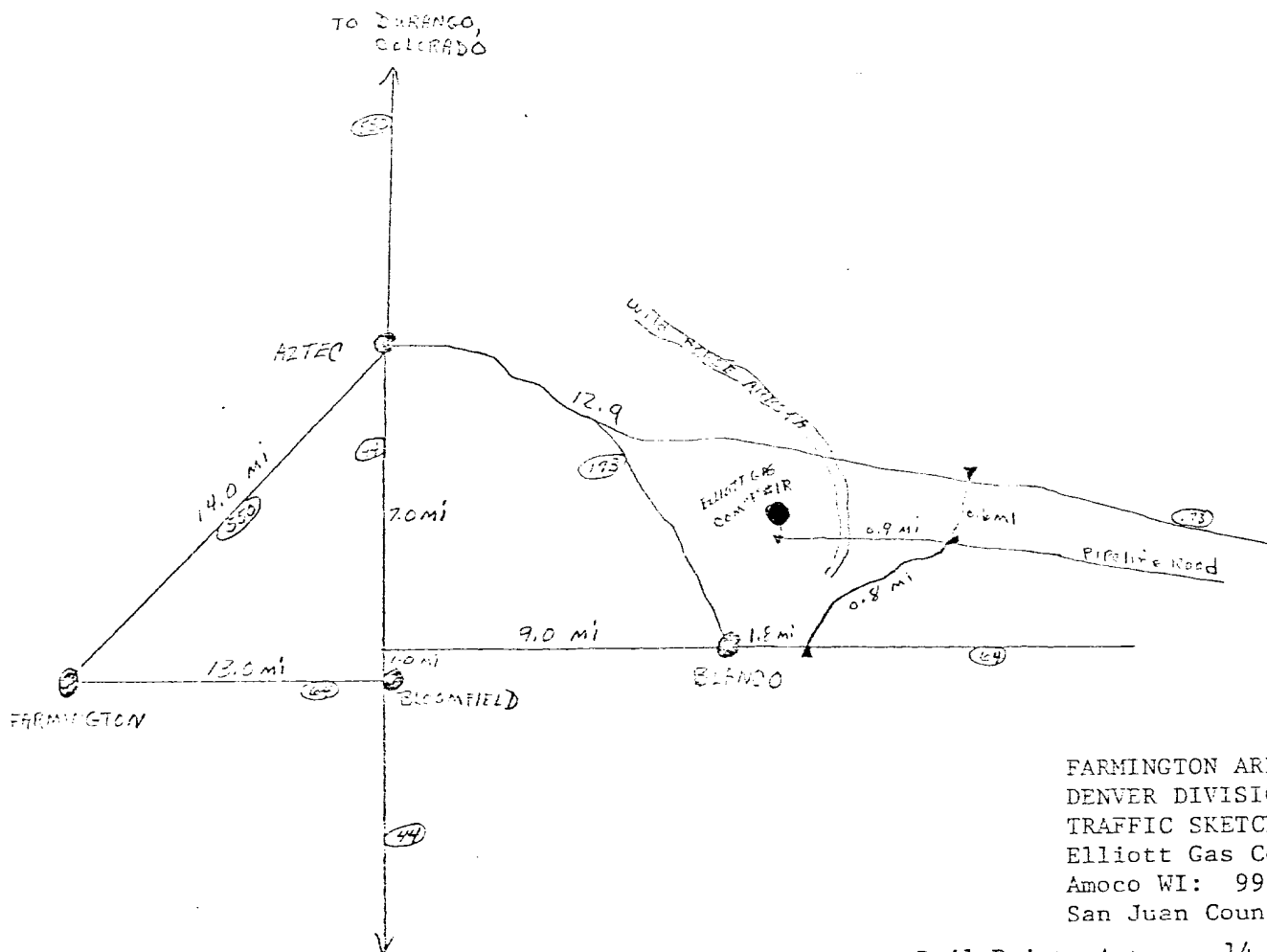
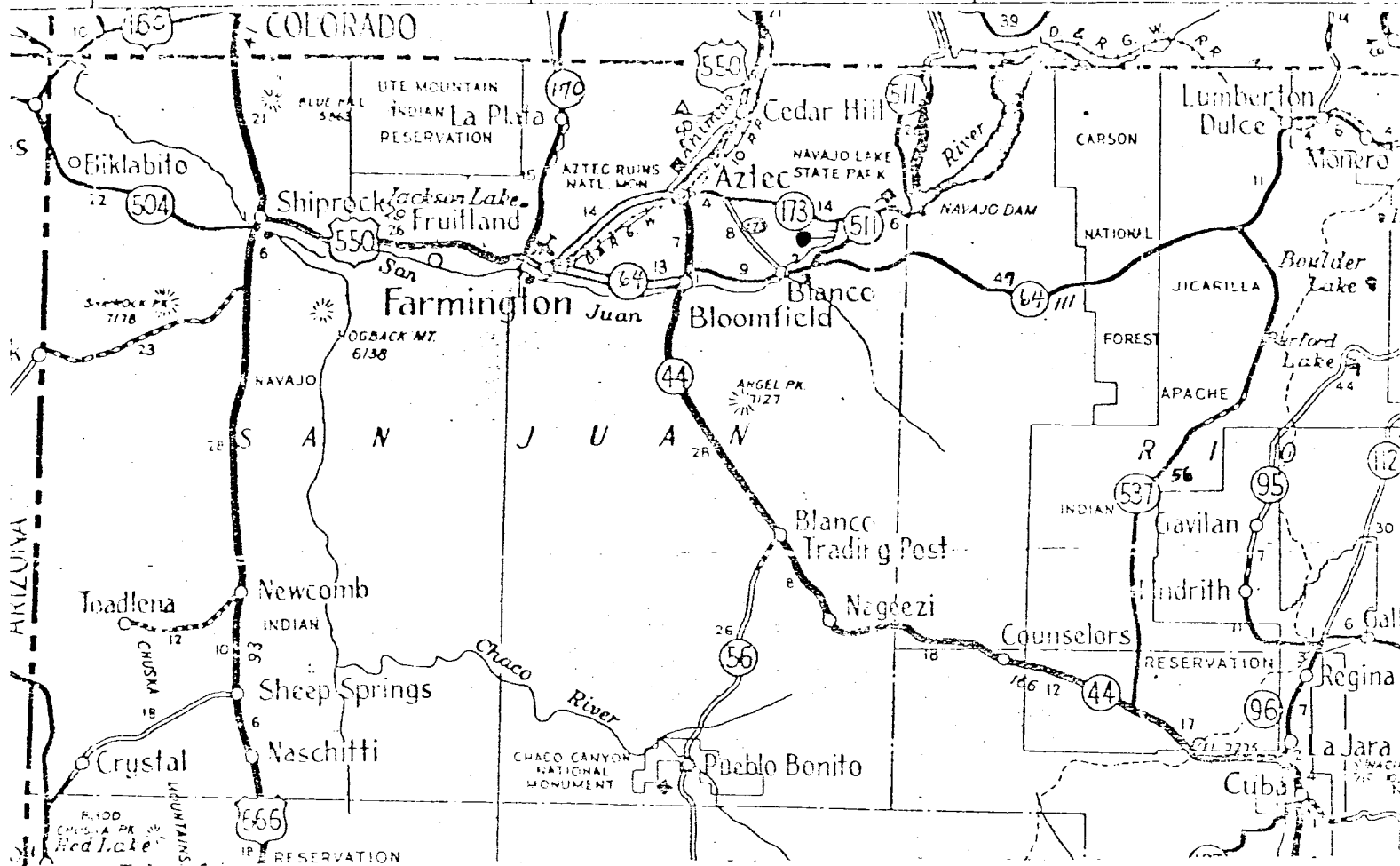
THIS PORTION, OR ANY PART THEREOF, MAY BE PLACED OUTSIDE OF SUB-STRUCTURE IF DESIRED. USE LONG RADIUS BENDS. PIPE USED FOR EXTENSION SHOULD BE SHOP MADE WITH NO SCREWED CONNECTIONS AND PRESSURE TESTED INITIALLY TO SAME TEST PRESSURE AS THE CHOKE MANIFOLD.



BLOWOUT PREVENTER HOOKUP

EXHIBIT D-4
OCTOBER 16, 1969





FARMINGTON AREA
DENVER DIVISION
TRAFFIC SKETCH
Elliott Gas Com "F" NO. 1R
Amoco WI: 99.22%
San Juan County, New Mexico
Rail Point. Aztec - 14.4 miles