

UNITED STATES  
DEPARTMENT OF THE INTERIOR  
GEOLOGICAL SURVEY

30-045-21882

## APPLICATION FOR PERMIT TO DRILL, DEEPEN, OR PLUG BACK

## 1a. TYPE OF WORK

DRILL ☒DEEPEN ☐PLUG BACK ☐

## b. TYPE OF WELL

OIL  
WELL ☐GAS  
WELL ☒

OTHER

SINGLE  
ZONE ☐MULTIPLE  
ZONE ☐

## 2. NAME OF OPERATOR

Tenneco Oil Company

## 3. ADDRESS OF OPERATOR

1860 Lincoln, 1200 Lincoln Tower Bldg., Denver, CO 80203

## 4. LOCATION OF WELL (Report location clearly and in accordance with any State requirements.)\*

At surface

At proposed prod. zone

1850' FSL &amp; 1650 FEL

## 14. DISTANCE IN MILES AND DIRECTION FROM NEAREST TOWN OR POST OFFICE\*

## 15. DISTANCE FROM PROPOSED\*

LOCATION TO NEAREST  
PROPERTY OR LEASE LINE, FT.  
(Also to nearest drlg. unit line, if any)18. DISTANCE FROM PROPOSED LOCATION\*  
TO NEAREST WELL, DRILLING, COMPLETED,  
OR APPLIED FOR, ON THIS LEASE, FT.

## 21. ELEVATIONS (Show whether DF, RT, GR, etc.)

5817 GL

## 16. NO. OF ACRES IN LEASE

320

## 19. PROPOSED DEPTH

7100

17. NO. OF ACRES ASSIGNED  
TO THIS WELL

320

## 20. ROTARY OR CABLE TOOLS

Rotary

## 22. APPROX. DATE WORK WILL START\*

Upon Approval

## 5. LEASE DESIGNATION AND SERIAL NO.

081001-SF080004

## 6. IF INDIAN, ALLOTTEE OR TRIBE NAME

## 7. UNIT AGREEMENT NAME

## 8. FARM OR LEASE NAME

Florance

## 9. WELL NO.

9-A

## 10. FIELD AND POOL, OR WILDCAT

Blanco Mesa Verde

11. SEC., T., R., M., OR BLK.  
AND SURVEY OR AREA

Sec. 13, T 30N, R 9W

## 12. COUNTY OR PARISH

San Juan

## 13. STATE

New Mexico

## 23.

## PROPOSED CASING AND CEMENTING PROGRAM

SIZE OF HOLE	SIZE OF CASING	WEIGHT PER FOOT	SETTING DEPTH	QUANTITY OF CEMENT
12 1/4	9 5/8	36#	200' +	Sufficient to circulate
8 3/4	7"	20#	3100' +	Cement back to surface casing.
6 1/8	4 1/2" liner	10.5#	7100' +	Sufficient to cement liner to Mesa Verde Interval.

Drill 12 1/4" hole to  $\pm$  200 and set 9 5/8" surface casing, circulate cement to surface.Drill 8 3/4" hole to  $\pm$  3100 and set 7" casing, circulate cement to surface casing.Drill 6 1/8" hole to T.D. using gas as drilling fluid. Log the hole and hang 4 1/2" liner from  $\pm$  3000 to T.D. and cement to Mesa Verde interval. BOP equipment is listed as points No. 4 & No. 5 in attached 7-Point program.

The well will be completed through casing perforations in the Mesa Verde formation and stimulated as necessary to establish commercial gas production.

IN ABOVE SPACE DESCRIBE PROPOSED PROGRAM: If proposal is to deepen or plug back, give data on present productive zone and proposed new productive zone. If proposal is to drill or deepen directionally, give pertinent data on subsurface locations and measured and true vertical depths. If cement preventer program, if any.

## 24.

SIGNED

*T. J. D. Drake*

TITLE

Production Clerk

DATE

August 29/1975

(This space for Federal or State office use)

PERMIT NO.

APPROVAL DATE

APPROVED BY

TITLE

CONDITIONS OF APPROVAL, IF ANY:

*Chal*

RECEIVED

SEP 4 1975

U. S. GEOLOGICAL SURVEY  
FARMINGTON, N. M.

\*See Instructions On Reverse Side

NEW MEXICO OIL CONSERVATION COMMISSION  
WELL LOCATION AND ACREAGE DEDICATION PLAT

Form C-102  
Supersedes C-128  
Effective 1-1-65

All distances must be from the outer boundaries of the Section.

Operator <b>TENNECO OIL COMPANY</b>			Lease <b>FLORANCE</b>		Well No. <b>9-A</b>
Unit Letter <b>J</b>	Section <b>13</b>	Township <b>30 NORTH</b>	Range <b>9 WEST</b>	County <b>SAN JUAN</b>	
Actual Footage Location of Well: <b>1850</b> feet from the <b>SOUTH</b> line and <b>1650</b> feet from the <b>EAST</b> line					
Ground Level Elev. <b>5817.0</b>	Producing Formation <b>Mesa Verde</b>	Pool <b>Blanco Mesa Verde</b>	Dedicated Acreage: <b>320</b> <sup>3/2</sup> Acres		

1. Outline the acreage dedicated to the subject well by colored pencil or hachure marks on the plat below.
2. If more than one lease is dedicated to the well, outline each and identify the ownership thereof (both as to working interest and royalty).
3. If more than one lease of different ownership is dedicated to the well, have the interests of all owners been consolidated by communitization, unitization, force-pooling, etc?

☒ Yes ☐ No If answer is "yes," type of consolidation **Communitized with Conoco 6/9/50**

If answer is "no," list the owners and tract descriptions which have actually been consolidated. (Use reverse side of this form if necessary.)

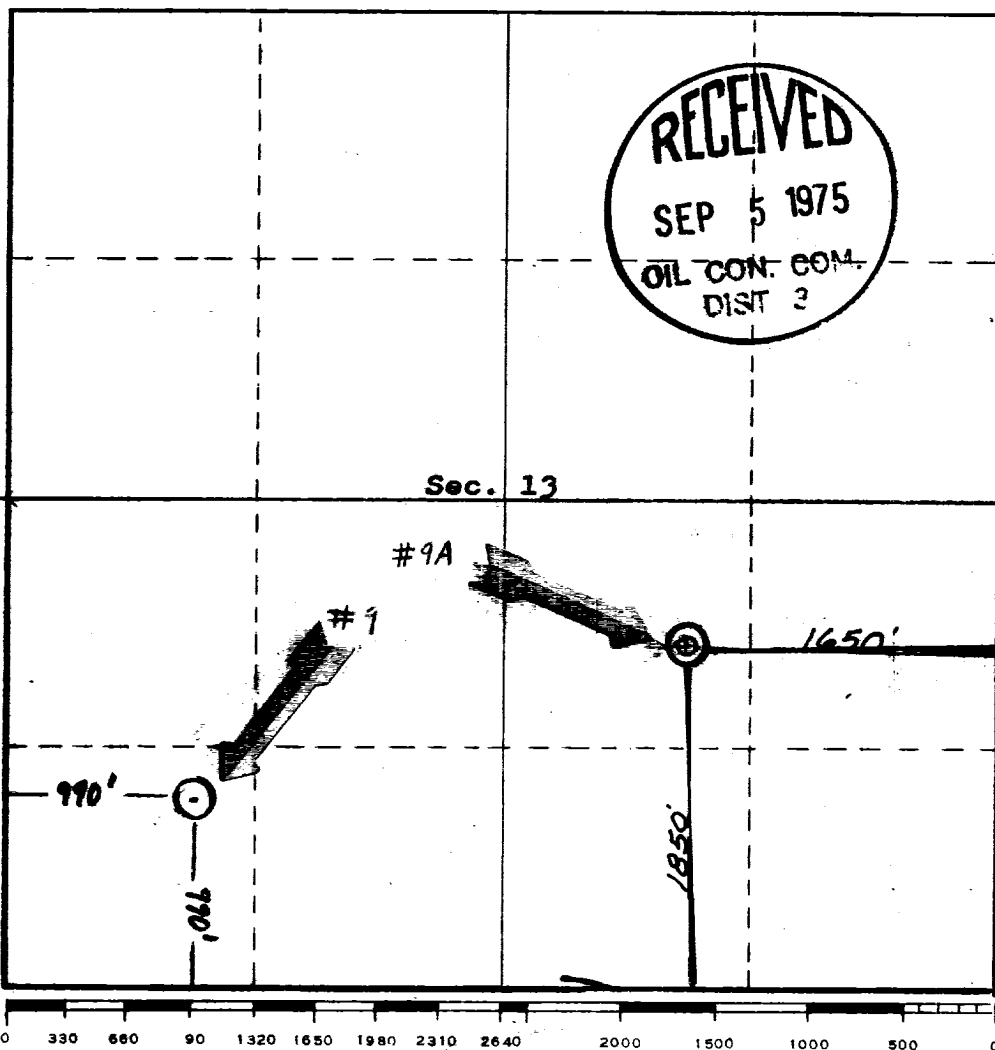
No allowable will be assigned to the well until all interests have been consolidated (by communitization, unitization, forced-pooling, or otherwise) or until a non-standard unit, eliminating such interests, has been approved by the Commission.



Sec. 13

#9A

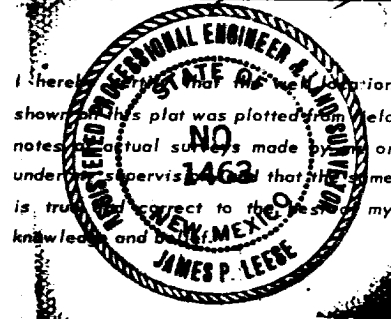
#1



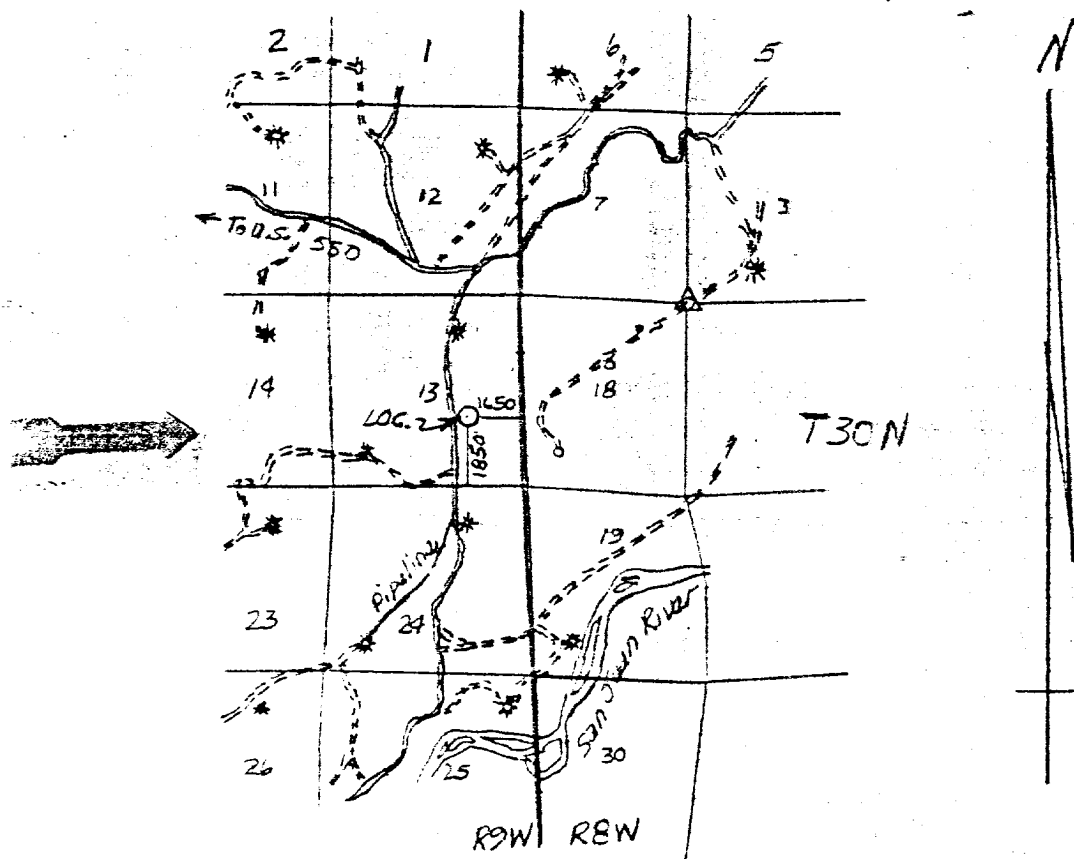
CERTIFICATION

I hereby certify that the information contained herein is true and complete to the best of my knowledge and belief.

Name *Ted J. Drake*  
Position *Production Check.*  
Company *Tenneco Oil Co.*  
Date *August 28, 1975*



Date Surveyed *21 August, 1975*  
Registered Professional Engineer and/or Land Surveyor *James P. Leese*  
Certificate No. **1463**



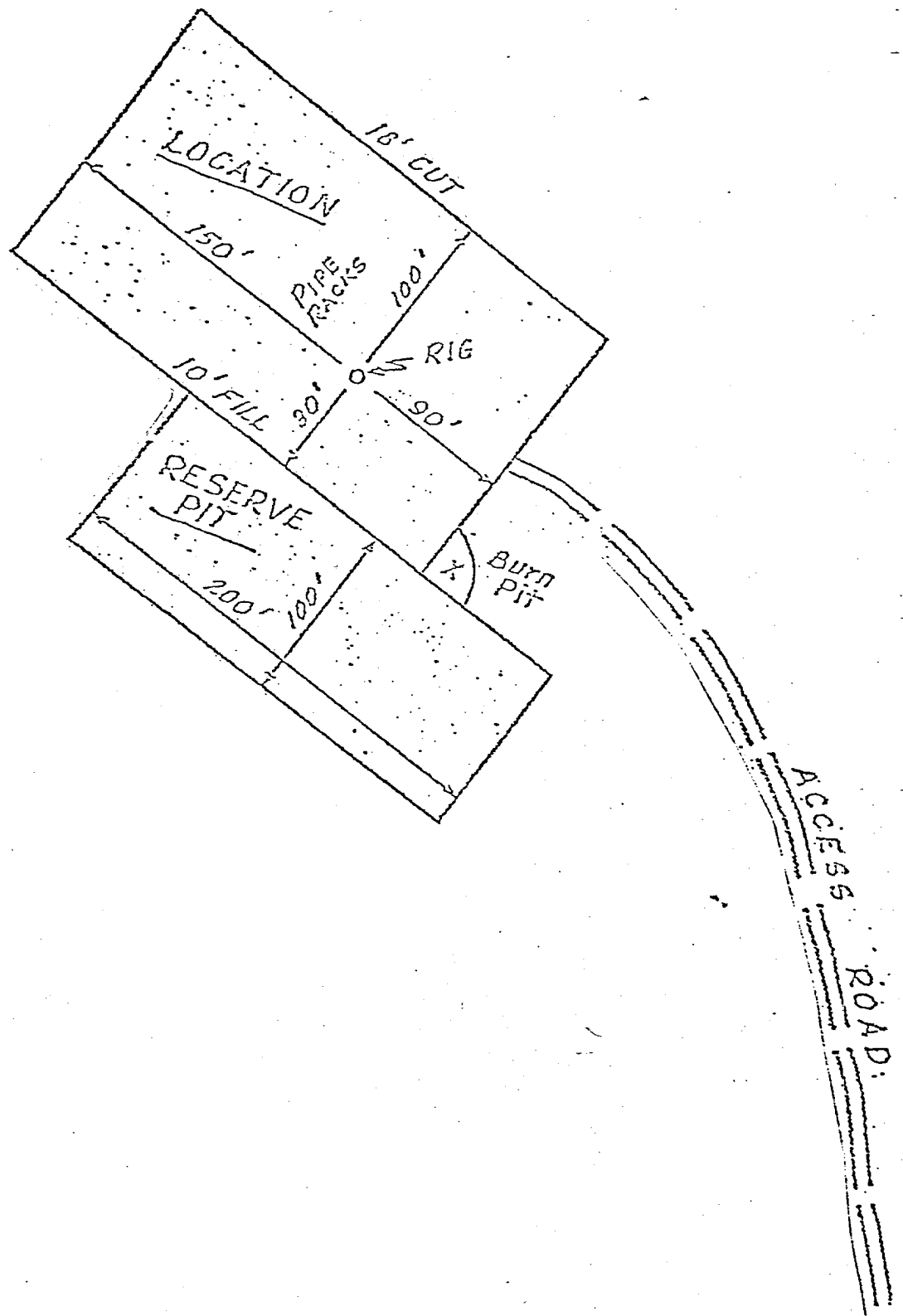
Vicinity Map for

**TEANECO OIL COMPANY**

Showing well location in  
the NW 1/4 SE 1/4 of Sec. 13,  
T30N, R9W, N.M.P.M.,  
San Juan County, New Mexico.

Date: 21 August, 1975 Scale: 1"=6000'

SAN JUAN ENGINEERING COMPANY



SURFACE USE PLAN

1. Shown on attached map.
2. Shown on attached map. Approximately 200' of 16' wide road will be required.
3. Shown on attached map.
4. Shown on attached map.
5. This is expected to be a dry gas well, therefore, a tank battery will not be required.
6. Water will be hauled from the San Juan River or nearest wash.
7. All waste material will be buried in reserve pit at time of location clean up.
8. No camps will be associated with this operation.
9. No airstrip will be built for this operation.
10. Shown on attached diagram.
11. Upon completion or abandonment of this well, the location will be cleaned and levelled and a dry hole marker placed, if applicable.
12. The location is sandy, rocky, typical for the area. Vegetation is sage brush, scrub oak and scrub cedar.

## 7 POINT WELL CONTROL PLAN

1. Surface casing: 9 5/8", 24#, approximately 200, grade K-55, new condition.
2. Casinghead will be 10", 900 Series, 3,000 psi rating.
3. Intermediate casing - 7", 20#, K-55, will be set at  $\pm$  3100, and cemented to surface casing.
4. Blowout preventors: Hydraulic, double ram, 10". One set of rams will be provided for each size drill pipe in the hole. One set of blind rams at all times. Fill line will be 2", kill line will be 2", choke relief line will be 2" with variable choke.
5. Auxiliary equipment:
  - (1) Kelly cock will be in use at all times.
  - (2) Stabbing valve to fit drill pipe will be present on floor at all times.
  - (3) Mud monitoring will be visual, no abnormal pressures are anticipated in this area.
  - (4) Rotating head will be used when drilling with gas.
6. Anticipated bottom-hole pressure:

This is an area of known pressures. Maximum anticipated pressure at 5700' T.D. is 1000 psi.
7. Drilling Fluids:

0 -200 Spud mud

200-3100 Gel water - low solids as needed to maintain good hole conditions

3100-T.D. Compressed gas

**Tenneco Oil**  
A Tenneco Company

Suite 1200  
Lincoln Tower Building  
Denver, Colorado 80203  
(303) 292-9920



August 28, 1975

U. S. Geological Survey  
Box 959  
Farmington, New Mexico 87401

Re: Application for Permit to Drill  
Florance 9A

Gentlemen:

Attached are five copies each of the Application for Permit to Drill, Surveyor's Plat, Vicinity Map, Location Access Map, 12-Point Surface Use Plan, and 7-Point Well Control Plan for the above captioned wells.

We are planning to commence drilling operations as soon as permits are approved.

Yours very truly,

TENNECO OIL COMPANY

A handwritten signature in cursive script, appearing to read "D. D. Myers".

D. D. Myers  
Division Production Manager

TFD:df

Enclosures