

UNITED STATES
DEPARTMENT OF THE INTERIOR
GEOLOGICAL SURVEY

APPLICATION FOR PERMIT TO DRILL, DEEPEN, OR PLUG BACK

1a. TYPE OF WORK

DRILL ☒DEEPEN ☐PLUG BACK ☐

b. TYPE OF WELL

OIL
WELL ☐GAS
WELL ☒

OTHER

SINGLE
ZONE ☒MULTIPLE
ZONE ☐

2. NAME OF OPERATOR

AMOCO PRODUCTION COMPANY

3. ADDRESS OF OPERATOR

501 Airport Drive, Farmington, New Mexico 87401

4. LOCATION OF WELL (Report location clearly and in accordance with any State requirements.)*

At surface

890' FNL & 790' FWL, Section 14, T-30-N, R-9-W

At proposed prod. zone

Same

14. DISTANCE IN MILES AND DIRECTION FROM NEAREST TOWN OR POST OFFICE*

Approximately 18 miles north of Aztec, New Mexico

15. DISTANCE FROM PROPOSED*

LOCATION TO NEAREST

PROPERTY OR LEASE LINE, FT.

(Also to nearest drlg. unit line, if any)

790

18. DISTANCE FROM PROPOSED LOCATION*

TO NEAREST WELL, DRILLING, COMPLETED,

OR APPLIED FOR, ON THIS LEASE, FT.

200'

16. NO. OF ACRES IN LEASE

320

17. NO. OF ACRES ASSIGNED
TO THIS WELL

N/320 acres in drilling unit

19. PROPOSED DEPTH

5300'

20. ROTARY OR CABLE TOOLS

Rotary

21. ELEVATIONS (Show whether DF, RT, GR, etc.)

6045' Gr. est.

22. APPROX. DATE WORK WILL START*

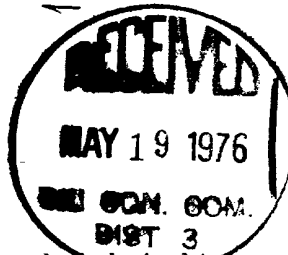
Within 90 days

23.

PROPOSED CASING AND CEMENTING PROGRAM

SIZE OF HOLE	SIZE OF CASING	WEIGHT PER FOOT	SETTING DEPTH	QUANTITY OF CEMENT
13-3/8"	9-5/8"	36#	350'	350 sx
8-3/4"	7"	23#	3200'	500 sx
6-1/4"	4-1/2"	11.6#	3000-5300'	400 sx

Amoco proposes to drill the above well to prevent drainage caused by offsetting infill drilling. The well will be drilled thru the Mesaverde formation using rotary tools with gas as a circulating media from 3200' to TD. Completion design will be based on open hole logs. A diagram and acreage plat are attached. A copy of all logs will be filed with your office on completion. The acreage is dedicated to El Paso Natural Gas Company.



RECEIVED

MAY 17 1976

U. S. GEOLOGICAL SURVEY

IN ABOVE SPACE DESCRIBE PROPOSED PROGRAM: If proposal is to deepen or plug back, give data on present productive zone and proposed new productive zone. If proposal is to drill or deepen directionally, give pertinent data on subsurface locations and measured and true vertical depths. Give blowout preventer program, if any.

24.

SIGNED

EE Sirovoda

TITLE

Area Adm. Supvr.

DATE

May 14, 1976

(This space for Federal or State office use)

PERMIT NO.

APPROVAL DATE

APPROVED BY

TITLE

DATE

CONDITIONS OF APPROVAL, IF ANY:

OK

*See Instructions On Reverse Side

**NEW MEXICO OIL CONSERVATION COMMISSION
WELL LOCATION AND ACREAGE DEDICATION PLAT**

Form C-102
Supersedes C-128
Effective 1-1-65

All distances must be from the outer boundaries of the Section.

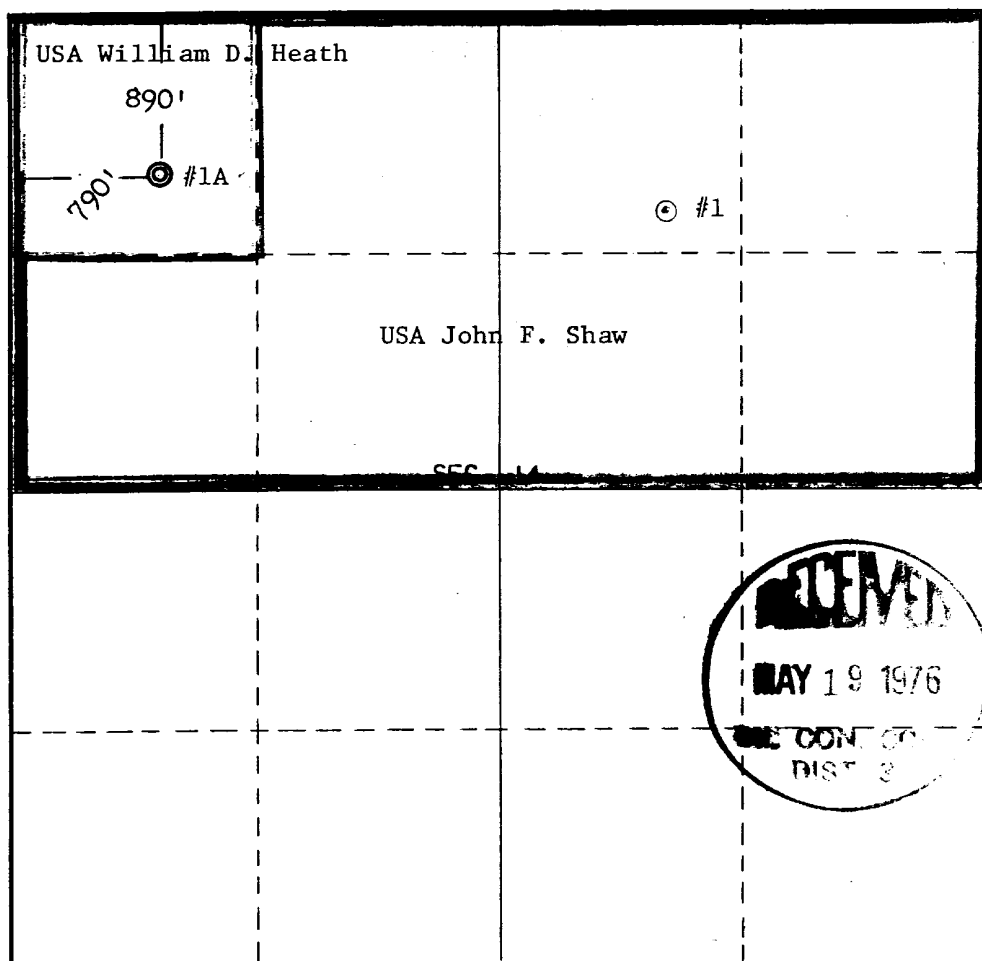
Operator Amoco Production Company			Lease Shaw Gas Com		Well No. 1A
Unit Letter D	Section 14	Township 30 North	Range 9 West	County San Juan	
Actual Footage Location of Well: 890 feet from the North line and 790 feet from the West line					
Ground Level Elev. 6045 est.	Producing Formation Mesaverde	Pool Blanco Mesaverde		Dedicated Acreage: N/320 Acres	

1. Outline the acreage dedicated to the subject well by colored pencil or hachure marks on the plat below.
2. If more than one lease is dedicated to the well, outline each and identify the ownership thereof (both as to working interest and royalty).
3. If more than one lease of different ownership is dedicated to the well, have the interests of all owners been consolidated by communitization, unitization, force-pooling, etc?

☒ Yes ☐ No If answer is "yes," type of consolidation _____

If answer is "no," list the owners and tract descriptions which have actually been consolidated. (Use reverse side of this form if necessary.) _____

No allowable will be assigned to the well until all interests have been consolidated (by communitization, unitization, forced-pooling, or otherwise) or until a non-standard unit, eliminating such interests, has been approved by the Commission.



CERTIFICATION

I hereby certify that the information contained herein is true and complete to the best of my knowledge and belief.

H. D. Montgomery
Name
H. D. Montgomery

Position
Area Engineer

Company
AMOCO PRODUCTION COMPANY

Date
May 14, 1976

NEW MEXICO
I hereby certify that the location shown on this plat was plotted from field notes of actual surveys made by me or under my supervision, and that the same are true and correct to the best of my knowledge and belief.
E. V. ECHOHAWK

Date Surveyed
May 7, 1976

Registered Professional Engineer and/or Land Surveyor

E. V. Echohawk
Certificate No. **3602**
E. V. Echohawk LS

0 330 660 990 1320 1650 1980 2310 2640 2000 1500 1000 500 0

DEVELOPMENT PLAN
SHAW GAS COM NO. 1A
890' FNL & 790' FWL, SECTION 14, T-30-N, R-9-W
SAN JUAN COUNTY, NEW MEXICO

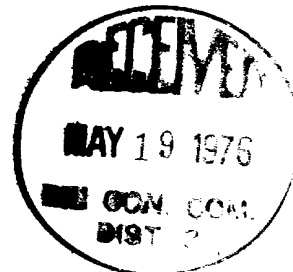
The proposed location is 200 feet west of Amoco's Shaw Gas Com "B" No. 1, a Pictured Cliffs well, and approximately 1,000 feet of road will be improved from existing road to location. Ground condition is mostly hard sandy soil; vegetation consists of sage brush, small cedar and very little grass; the location will be prepared with minimum damage. Verbal approval has been obtained from Mr. Bob Moore, U.S.G.S.; Mr. Greg Majkrzak, BLM; and Pat Sarnalsky, Archaeologist.

Arrangements are being made to haul water from water hole in Pump Wash, approximately 2 miles, or San Juan River, approximately 7 miles. Drilling fluids will be a low solid, non-dispersed drilling mud. Upon completion the well location will be cleaned, leveled and reserve pit backfilled.

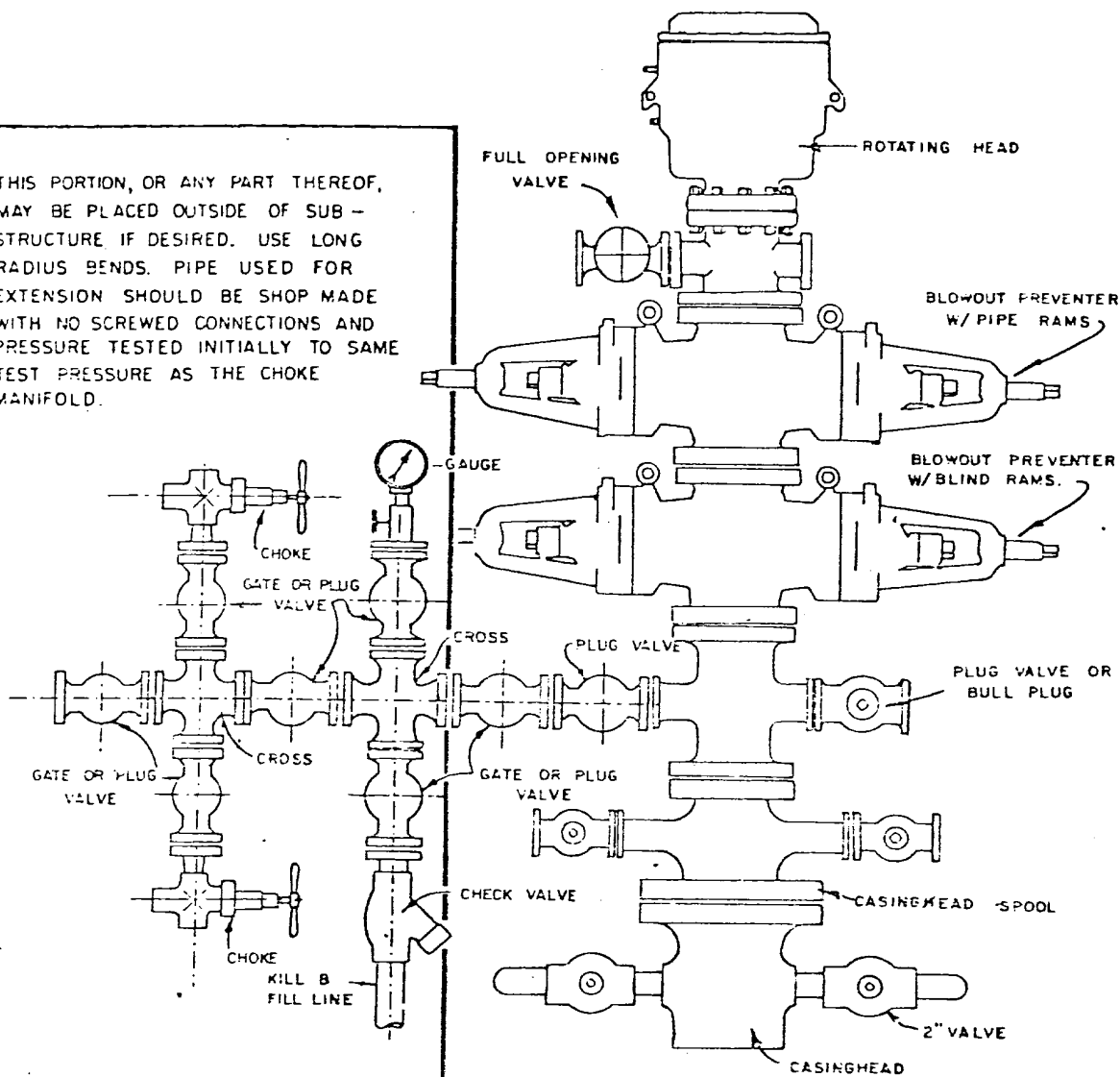
There are no airstrips or camps nearby.

Amoco's standard blowout prevention will be employed, see attached drawing for blowout preventer design.

We believe that the development plan, and drawing, will answer any questions which might arise as to the proposed drilling sight.

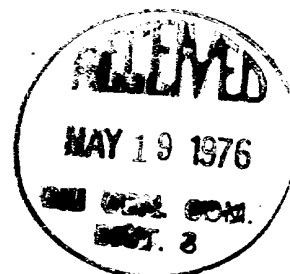


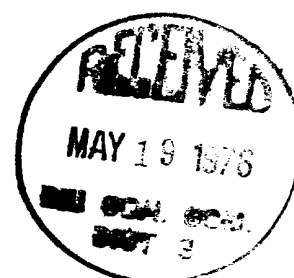
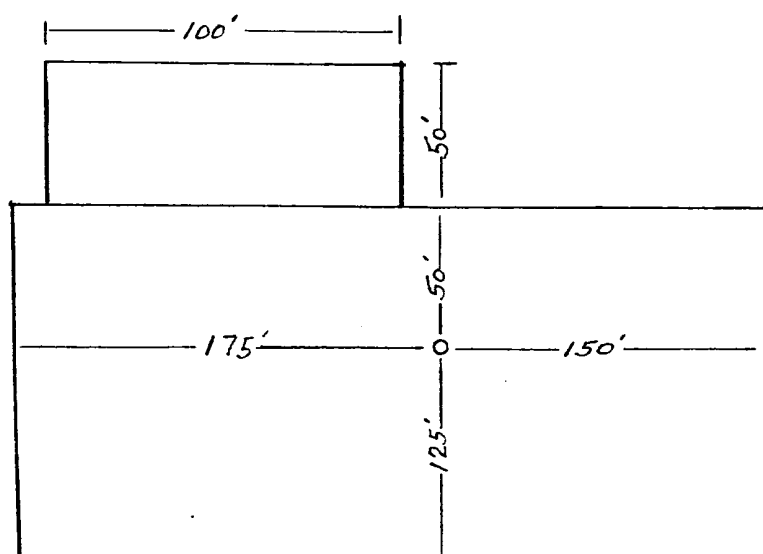
THIS PORTION, OR ANY PART THEREOF, MAY BE PLACED OUTSIDE OF SUB-STRUCTURE IF DESIRED. USE LONG RADIUS BENDS. PIPE USED FOR EXTENSION SHOULD BE SHOP MADE WITH NO SCREWED CONNECTIONS AND PRESSURE TESTED INITIALLY TO SAME TEST PRESSURE AS THE CHOKE MANIFOLD.



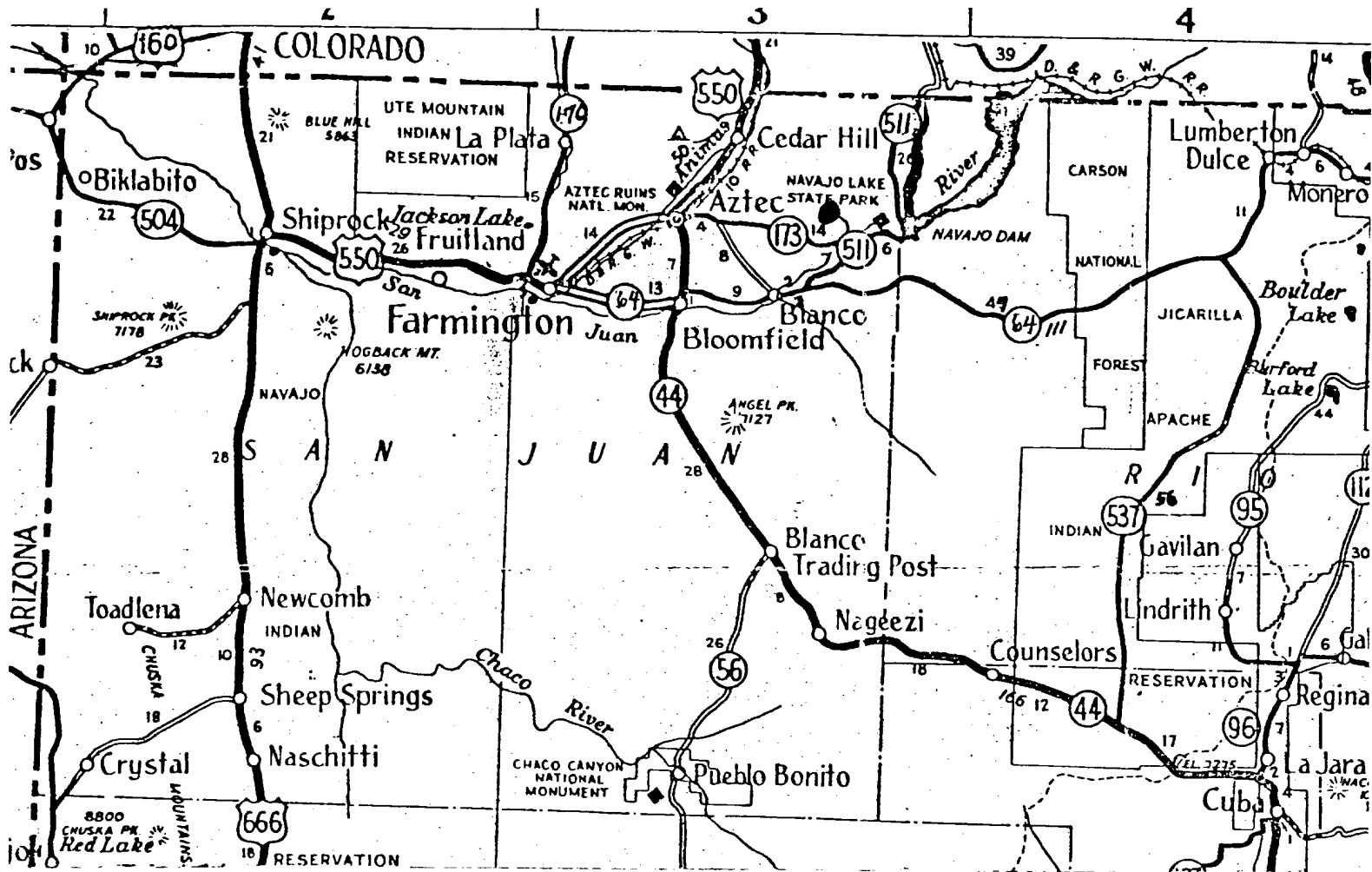
BLOWOUT PREVENTER HOOKUP

EXHIBIT D-4
OCTOBER 16, 1969





Amoco Production Company	SCALE:
SHAW GAS COM NO. 1 NW/4 Section 14, T-30-N, R-9-W SanJuan County, New Mexico	DRG. NO. 5-17-76



1
NORTH

TO DURANGO,
COLORADO

FARMINGTON AREA, TRAFFIC SKETCH
DENVER DIVISION
Shaw Gas Com Well No. 1-A
San Juan County, New Mexico
Amoco WI: 100%

Rail Point, Aztec - 19.8 Mi.
Mud Point, Aztec - 19.8 Mi.
Cement Point, Farmington - 33.8 Mi.

5-14-76

