

UNITED STATES
DEPARTMENT OF THE INTERIOR
GEOLOGICAL SURVEY

APPLICATION FOR PERMIT TO DRILL, DEEPEN, OR PLUG BACK

1a. TYPE OF WORK

DRILL ☒DEEPEN ☒PLUG BACK ☐

b. TYPE OF WELL

OIL
WELL ☐GAS
WELL ☒

OTHER

SINGLE
ZONE

81976

MULTIPLE
ZONE ☐

2. NAME OF OPERATOR

Tenneco Oil Company

3. ADDRESS OF OPERATOR

1360 Lincoln St., Suite 1200, Denver, Colorado 80203

4. LOCATION OF WELL (Report location clearly and in accordance with any State requirements.*)

At surface

1450' FSL and 1450' FEL, Unit J

At proposed prod. zone

14. DISTANCE IN MILES AND DIRECTION FROM NEAREST TOWN OR POST OFFICE*

12 miles east of Aztec, N. M. on highway 173, turn left on lease
road for 3/4 mile, turn right to Riddle 6, 500' SW of there15. DISTANCE FROM PROPOSED
LOCATION TO NEAREST
PROPERTY OR LEASE LINE, FT.
(Also to nearest drlg. unit line, if any)

16. NO. OF ACRES IN LEASE

320

17. NO. OF ACRES ASSIGNED
TO THIS WELL

S/-320

18. DISTANCE FROM PROPOSED LOCATION*
TO NEAREST WELL, DRILLING, COMPLETED,
OR APPLIED FOR, ON THIS LEASE, FT.

19. PROPOSED DEPTH

± 5292'

20. ROTARY OR CABLE TOOLS

Rotary

21. ELEVATIONS (Show whether DF, RT, GR, etc.)

6082' GL

22. APPROX. DATE WORK WILL START*

Mid-September

23. PROPOSED CASING AND CEMENTING PROGRAM

SIZE OF HOLE	SIZE OF CASING	WEIGHT PER FOOT	SETTING DEPTH	QUANTITY OF CEMENT
12 1/4"	9 5/8"	36#	± 200'	Suff. to circulate to surface.
8 3/4"	7"	23#	± 3037'	Suff. to cement back to surface
6 1/8"	4 1/2"	10.5#	± 2837'-5292'	Suff. to cement back to 7" csg.

Plan to drill well as follows:

1. MIRURT, drill 12 1/4" hole to +200'.
2. Set and cement 9 5/8" casing to + 200' & cement with suff. cement to circ. to surface
3. Drill out with 8 3/4" bit to + 3037 feet.
4. Run 7" casing and cement back to surface casing.
5. Drill out of 7" using gas as the circulating fluid, do not drill more than 10' below the 7" casing shoe until the hole has dried up completely and is dusting.
6. Drill the hole to T.D., log the hole dry as requested by drillsite geologist.
7. Run 4 1/2" liner to T.D., load hole with mud and cement liner back to top of 4 1/2". Set liner hanger and POH w/drill pipe.
8. This well will be completed through casing perforations and stimulated as necessary to establish commercial production.
9. Clean up area.
10. Approximately 11 days will be required to drill this well.
11. The gas is dedicated to Southern Union Gathing Co.

IN ABOVE SPACE DESCRIBE PROPOSED PROGRAM: If proposal is to deepen or plug back, give data on present productive zone and proposed new productive zone. If proposal is to drill or deepen directionally, give pertinent data on subsurface locations and measured and true vertical depths. Give blowout preventer program, if any.

24.

SIGNED

D. D. [Signature]

TITLE

Div. Production Manager

DATE

8/17/76

(This space for Federal or State office use)

PERMIT NO.

APPROVAL DATE

APPROVED BY

TITLE

DATE

CONDITIONS OF APPROVAL, IF ANY:

NEW MEXICO OIL CONSERVATION COMMISSION **WELL LOCATION AND ACERAGE DEDICATION PLAT**

All distances must be from the outer boundaries of the Section

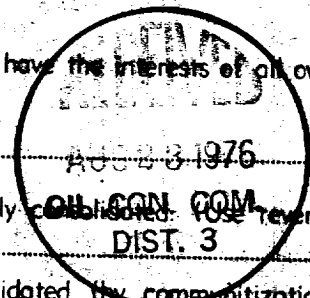
Operator TENNECO OIL COMPANY		Lease RIDDLE		Well No. 2-A
Unit Letter J	Section 17	Township 30 NORTH	Range 9 WEST	County SAN JUAN
Actual Footage Location of Well: 1450 feet from the SOUTH line and 1450 feet from the EAST line				
Ground Level Elev. 6082	Producing Formation Blanco Mesa Verde	Pool Blanco Mesa Verde	Dedicated Acreage 6/310 Acres	

- Outline the acreage dedicated to the subject well by colored pencil or hatchure marks on the plat below.
- If more than one lease is dedicated to the well, outline each and identify the ownership thereof (both as to working interest and royalty).
- If more than one lease of different ownership is dedicated to the well, have the interests of all owners been consolidated by communization, unitization, force-pooling, etc?

() Yes () No If answer is "yes," type of consolidation _____

If answer is "no," list the owners and tract descriptions which have actually consolidated. (Use reverse side of this form if necessary.) _____

No allowable will be assigned to the well until all interests have been consolidated (by communization, unitization, forced-pooling, or otherwise) or until a non standard unit, eliminating such interests, has been approved by the Commission.



CERTIFICATION

I hereby certify that the information contained herein is true and complete to the best of my knowledge and belief.

Name: *Ed P. Drake*
 Position: **Production Clerk**
 Company: **Tenneco Oil Company**
 Date: **August 17, 1976**

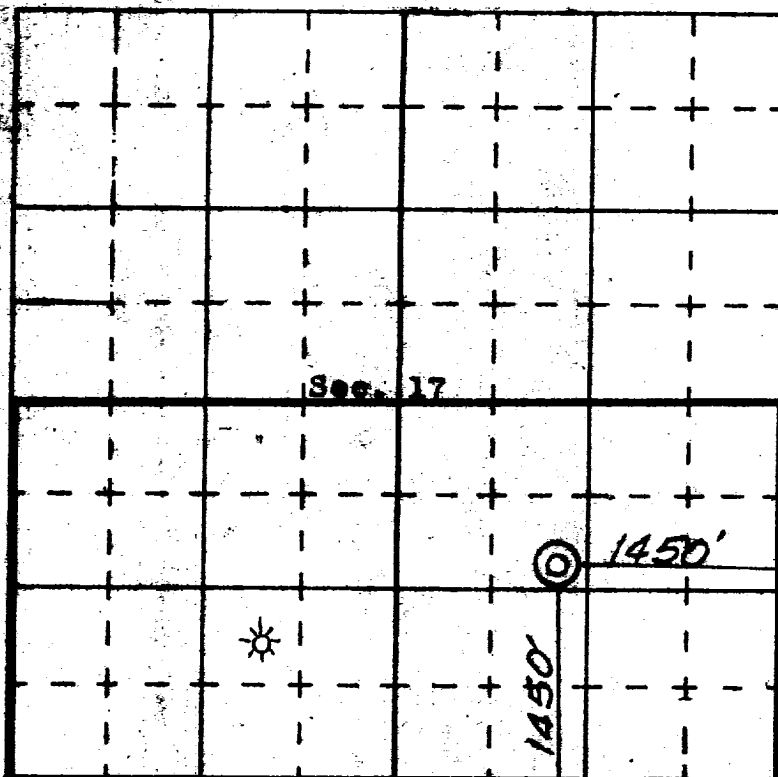
I hereby certify that this plat was plotted from the original survey made by me and that the same is true to my knowledge and belief.

25 June, 1976
 Date Surveyed

James P. Lease
 Registered Professional Engineer
 and/or Land Surveyor

James P. Lease

1463
 Certificate No.



APPLICATION FOR PERMIT TO DRILL, DEEPEN, OR PLUG BACK

(PAGE 2) for

12. SURFACE FORMATION IS- SAN JOSE (Eocene)

13. FORMATION TOPS (Estimated)

Pictured Cliffs	2786	' possible oil or gas producer
Cliff House	4402	' possible oil or gas producer
Menefee	4596	' possible oil or gas producer
Point Lookout	5022	' possible oil or gas producer
Mancos Shale	5172	'

14. Mud program : see point 7 of 7 point well-control plan

15. No coring or drill stem tests will be taken

16. Logs to be taken= Density
Gamma Ray
Caliper and temperature logs
Deviation surveys will also be taken

Tenneco Oil
A Tenneco Company

Suite 1200
Lincoln Tower Building
Denver, Colorado 80203
(303) 292-9920



August 17, 1976

RECEIVED

AUG 20 1976

U. S. GEOLOGICAL SURVEY
FARMINGTON, N. M.

U. S. Geological Survey
Box 959
Farmington, New Mexico 87401

RE: Amended Application
for Permit to Drill on
the Riddle #2A.

Gentlemen:

An error was made by the surveyor on the stated elevation of this lease. The elevation should have been 6082' rather than 7072'.

We have attached the original and five copies of your form #9-331-C and a surveyors plat for this well. The new elevation will change our setting depth for our 7" casing, 4-1/2" casing liner, and formation tops by 990'. The other parts of the original APD will still be applicable.

If we can be of any further assistance, please contact our office.

Sincerely,

TENNECO OIL COMPANY

[Signature]
D. D. Myers,
Division Production Manager

DDM/TFD/jh

Attachments

