

UNITED STATES
DEPARTMENT OF THE INTERIOR
GEOLOGICAL SURVEY

APPLICATION FOR PERMIT TO DRILL, DEEPEN, OR PLUG BACK

1A. TYPE OF WORK

DRILL ☒

DEEPEN ☐

PLUG BACK ☐

B. TYPE OF WELL

OIL
WELL ☐

GAS
WELL ☒

OTHER

SINGLE
ZONE ☐

MULTIPLE
ZONE ☐

2. NAME OF OPERATOR

Tenneco Oil Company

3. ADDRESS OF OPERATOR

1360 Lincoln St., Suite 1200, Denver, Colorado 80203

4. LOCATION OF WELL (Report location clearly and in accordance with any State requirements.)*
At surface 1057' FSL and 1450' FEL, Unit 0

At proposed prod. zone

14. DISTANCE IN MILES AND DIRECTION FROM NEAREST TOWN OR POST OFFICE*

15 miles East of Aztec, N.M. on 173, North to Fork in road, Take a right for 5/8 of a mile to location

15. DISTANCE FROM PROPOSED*

LOCATION TO NEAREST
PROPERTY OR LEASE LINE, FT.
(Also to nearest drlg. unit line, if any)

18. DISTANCE FROM PROPOSED LOCATION*
TO NEAREST WELL, DRILLING, COMPLETED,
OR APPLIED FOR, ON THIS LEASE, FT.

16. NO. OF ACRES IN LEASE

320

19. PROPOSED DEPTH

± 5090'

17. NO. OF ACRES ASSIGNED
TO THIS WELL

S/320

20. ROTARY OR CABLE TOOLS

Rotary

21. ELEVATIONS (Show whether DF, RT, GR, etc.)

5870' GL

22. APPROX. DATE WORK WILL START*

September, 1976

23. PROPOSED CASING AND CEMENTING PROGRAM

SIZE OF HOLE	SIZE OF CASING	WEIGHT PER FOOT	SETTING DEPTH	QUANTITY OF CEMENT
12 1/4"	9 5/8"	36#	± 200'	Suff. to circulate to surface.
8 3/4"	7"	23#	± 2825'	Suff. to cement back to surface csq.
6 1/8"	4 1/2"	10.5#	± 2625'-5090'	Suff. to cement back to 7" csq.

Plan to drill well as follows:

1. MIRURT, drill 12 1/4" hole to ±200'.
2. Set and cement 9 5/8" casing to ± 200' & cement with suff. cement to circ. to surface.
3. Drill out with 8 3/4" bit to ±2825' feet.
4. Run 7" casing and cement back to surface casing.
5. Drill out of 7" using gas as the circulating fluid, do not drill more than 10' below the 7" casing shoe until the hole has dried up completely and is dusting.
6. Drill the hole to T.D., log the hole dry as requested by drillsite geologist.
7. Run 4 1/2" liner to T.D., load hole with mud and cement liner back to top of 4 1/2". Set liner hanger and POH w/drill pipe.
8. This well will be completed through casing perforations and stimulated as necessary to establish commercial production.
9. Clean up area.
10. Approximately 11 days will required to drill this well
11. The gas is dedicated to Southern Union Gathering Co.

IN ABOVE SPACE DESCRIBE PROPOSED PROGRAM: If proposal is to deepen or plug back, give data on present productive zone and proposed new productive zone. If proposal is to drill or deepen directionally, give pertinent data on subsurface locations and measured and true vertical depths. Give blowout preventer program, if any.

SIGNED

D. D. Myers

TITLE Div Production Manager

DATE 7/30/76

(This space for Federal or State office use)

PERMIT NO.

APPROVAL DATE

APPROVED BY

TITLE

CONDITIONS OF APPROVAL, IF ANY:

Okal

U. S. GEOLOGICAL SURVEY

APPLICATION FOR PERMIT TO DRILL, DEEPEN, OR PLUG BACK

(PAGE 2) for Florance 6A

12. SURFACE FORMATION IS San Jose (EOCENE)

13. FORMATION TOPS (Estimated)

Pictured Cliffs	2575'	possible oil or gas producer
Cliff House	4245'	possible oil or gas producer
Menefee	4415'	possible oil or gas producer
Point Lookout	4780'	possible oil or gas producer
Mancos Shale	4970'	

14. Mud program : see point 7 of 7 point well control plan

15. No coring or drill stem tests will be taken

16. Logs to be taken= Density
Gamma Ray
Caliper and temperature logs
Deviation surveys will also be taken

NEW MEXICO OIL CONSERVATION COMMISSION

WELL LOCATION AND ACERAGE DEDICATION PLAT

All distances must be from the outer boundaries of the Section

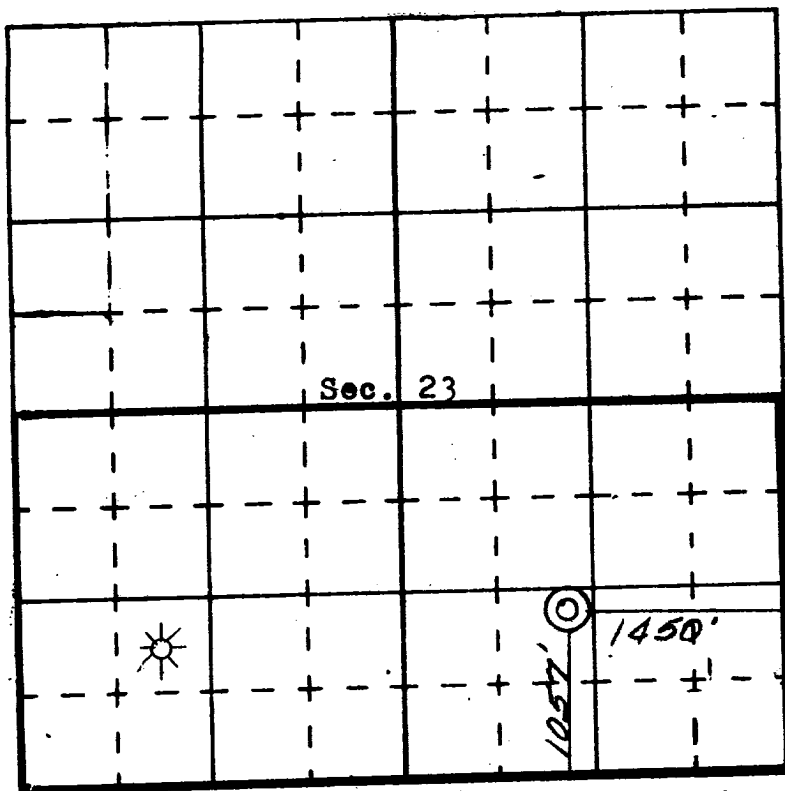
Operator TENNECO OIL COMPANY			Lease FLORANCE		Well No. 6-A
Unit Letter 0	Section 23	Township 30 NORTH	Range 9 WEST	County SAN JUAN	
Actual Footage Location of Well: 1057 feet from the SOUTH line and 1450 feet from the EAST line					
Ground Level Elev. 5870	Producing Formation Blanco Mesa Verde	Pool Blanco Mesa Verde	Dedicated Acreage: 3/320		Acres

1. Outline the acreage dedicated to the subject well by colored pencil or hachure marks on the plat below.
2. If more than one lease is dedicated to the well, outline each and identify the ownership thereof (both as to working interest and royalty),
3. If more than one lease of different ownership is dedicated to the well, have the interests of all owners been consolidated by communitization, unitization, force-pooling, etc?

() Yes () No If answer is "yes," type of consolidation

If answer is "no," list the owners and tract descriptions which have actually consolidated (Use reverse side of this form if necessary.)

No allowable will be assigned to the well until all interests have been consolidated (by communitization, unitization, forced-pooling, or otherwise) or until a non standard unit, eliminating such interests, has been approved by the Commission.



CERTIFICATION

I hereby certify that the information contained herein is true and complete to the best of my knowledge and belief.

Name *John P. Leese*
 Position Production Clerk
 Company Tenneco Oil Company
 Date July 29, 1976

I hereby certify that the information contained on this plat was obtained from a reliable source and that the same is true and correct to the best of my knowledge and belief.

NEW MEXICO PROFESSIONAL ENGINEERS & SURVEYORS
 No. **1463**
 Date Surveyed 25 June, 1976
 Registered Professional Engineer and Land Surveyor
James P. Leese
James P. Leese
 Certificate No. 1463