

UNITED STATES
DEPARTMENT OF THE INTERIOR
BUREAU OF LAND MANAGEMENT

SUBMIT IN TRIPLICATE*
(Other instructions on re-
verse side)

Form approved.
Budget Bureau No. 1004-0135
Expires August 31, 1985

8. LEASE DESIGNATION AND SERIAL NO.

SF-080005

9. IF INDIAN, ALLOTTEE OR TRIBE NAME

7. UNIT AGREEMENT NAME

8. FARM OR LEASE NAME

Florance

9. WELL NO.

6A

10. FIELD AND POOL, OR WILDCAT

Blanco Mesaverde

11. SEC., T., R., N., OR S.W. AND
SURVEY OR AREA

Sec. 23, T30N, R9W

12. COUNTY OR PARTIAL
San Juan

13. STATE
NM

1. OIL ☐ GAS ☒ OTHER ☐

2. NAME OF OPERATOR

Tenneco Oil Company

3. ADDRESS OF OPERATOR

P. O. Box 3249, Englewood, CO 80155

4. LOCATION OF WELL (Report location clearly and in accordance with any State requirements.*
See also space 17 below.)
At surface

1057' FSL, 1450' FEL

14. PERMIT NO.

15. ELEVATIONS (Show whether by LEVEL, GPS, LAND MANAGEMENT,
BIRMINGHAM RESOURCE AREA
5870' GL

16. Check Appropriate Box To Indicate Nature of Notice, Report, or Other Data

NOTICE OF INTENTION TO:

TEST WATER SHUT-OFF

PULL OR ALTER CASING

FRACTURE TREAT

MULTIPLE COMPLETE

SHOOT OR ACIDIZE

ABANDON*

REPAIR WELL

CHANGE PLANS

(Other) Recompletion - Fruitland Coal

SUBSEQUENT REPORT OF:

WATER SHUT-OFF

REPAIRING WELL

FRACTURE TREATMENT

ALTERING CASING

SHOOTING OR ACIDIZING

ABANDONMENT*

(Other)

(NOTE: Report results of multiple completion on Well
Completion or Recompletion Report and Log form.)

17. DESCRIBE PROPOSED OR COMPLETED OPERATIONS (Clearly state all pertinent details, and give pertinent dates, including estimated date of starting any
proposed work. If well is directionally drilled, give subsurface locations and measured and true vertical depths for all markers and zones perti-
nent to this work.)*

Tenneco requests permission to dual the above referenced well by recompleting in the
Fruitland ~~coal~~ formation according to the attached detailed procedure.

coal interval
Need NMOCC approval to dually complete.

RECEIVED

SEP 20 1984

OIL CON. DIV.
DIST. 3

18. I hereby certify that the foregoing is true and correct

SIGNED

TITLE Sr. Regulatory Analyst

DATE

(This space for Federal or State office use)

APPROVED BY

CONDITIONS OF APPROVAL, IF ANY:

TITLE

NMOCC

DATE

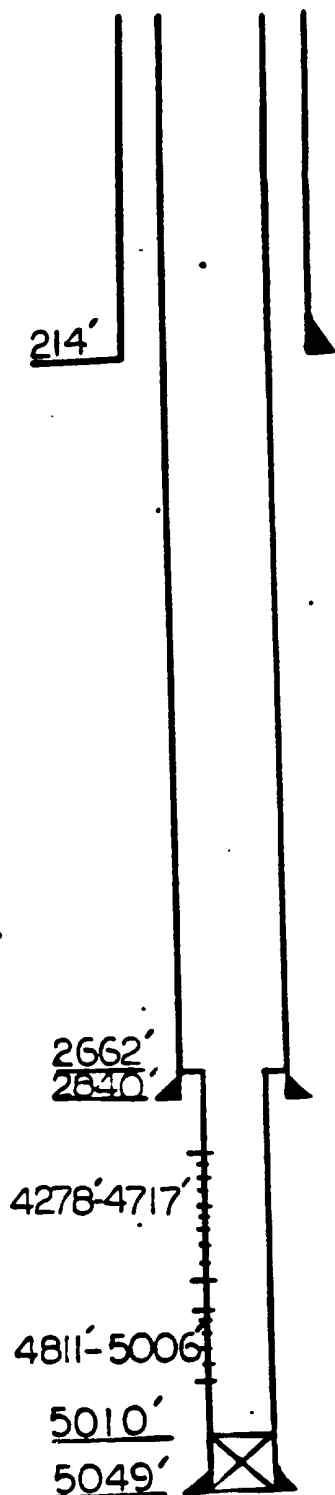
SEP 18 1984

M. MILLENBACH
AREA MANAGER

*See Instructions on Reverse Side

LEASE FloranceWELL NO. 6A9-5/8 "OD, 36 LB, K-55 CSG.W/ 225 SXTOC @ Surface7 "OD, 23 LB, K-55 CSG.W/ 575 SXTOC @ Surface4-1/2 "OD, 10.5 & 11.6 LB, K-55 CSG.W/ 280 SXTOC @ 2662'DETAILED PROCEDURE (CONTINUED):

16. RIH w/ short string of 2-3/8" tbg w/ SN 4' perforated, orange peeled sub and pump out plug.
17. Land short string @ \pm bottom Fruitland Coal perf.
18. NDBOPE and NUWH.
19. Drop ball and pump out long string expendable check. Return MV to prod. Swab if necessary.
20. Pump out short string plug, kick around w/ N₂.
21. Flow Fruitland Coal to clean up. SI for AOF.



LEASE FloranceWELL NO. 6A9-5/8 "OD, 36 LB, K-55 CSG.W/ 225 SX

TOC @ Surface

7 "OD, 23 LB, K-55 CSG.W/ 575 SX

TOC @ Surface

4-1/2 "OD, 10.5 & 11.6 LB, K-55 CSG.W/ 280 SXTOC @ 2662'214'2662'
2640'4278'-4717'4811'-5006'5010'5049'DETAILED PROCEDURE:

1. MIRUSU. Kill Mesaverde w/ 1% KCl wtr. Remove WH and install BOP. RIH w/ tbg & tag PBTB.
2. CO w/foam if necessary.
3. RIH on WL w/ a 7" Model "D" w/ EXP plug in place. Set pkr @ 2660' and dump 1 sx sand on pkr. Note: TOL @ 2662'.
4. Load hole w/ 1% KCl water and PT csg and pkr to 3000 psi.
5. Run Gamma Ray-Neutron log from 2660' to 214'. (Telecopy results to Denver.)
6. Replace single WH w/a dual WH.
7. Perforate Fruitland Coal as per Geological Engineering recommendation using 2 JSPF in 4" hollow carrier casing guns w/ premium charges.

Approximately 35' of coal is anticipated.

8. RIH w/ 7" pkr and SN on tbg and set pkr \pm 75' above top perforation. Load Annulus and PT pkr to 1500 psi.
9. Establish inj rate w/ 1% KCl water into perfs.
10. Acidize w/ 20 gals wgt'd 15% HCl per perforation containing 50% excess ball sealers. FTCU. Swab in if necessary and flow test. Release pkr. RIH past perfs & POOH w/pkr & tbg.
11. Foam frac Fruitland Coal dn csg using 70% quality foamed 1% KCl wtr. Rate: 20 BPM w/max stp 3000 psig.

Treat as follows:

Foam Vol	Prop Conc	Cum Prop
12,000 gal	PAD	0
8,000 gal	.5	4,000
10,000 gal	1	14,000
14,000 gal	2	42,000
16,000 gal	3	90,000

JOB TOTALS: 60,000 gal 70% quality foam and 90,000 #20/40 sand.

12. SI for 2 hours. FTCU through a 1/2" tapped bull plug.
13. RIH w/ 2-3/8" long string w/ seal assembly, blast jts, SN & pump through expendable check.
14. CO to Model "D" w/ foam and knock out exp plug in pkr.
15. Land tbg @ \pm 4980'.