

NO. OF COPIES RECEIVED	5
DISTRIBUTION	
SANTA FE	1
FILE	1
U.S.G.S.	2
LAND OFFICE	
OPERATOR	3

NEW MEXICO OIL CONSERVATION COMMISSION

30-045-22279

Form C-131
Revised 1-4-65

5A. Indicate Type of Lease	
STATE <input type="checkbox"/>	FEE <input checked="" type="checkbox"/>
5. State Oil & Gas Lease No.	
B-11479	

APPLICATION FOR PERMIT TO DRILL, DEEPEN, OR PLUG BACK

1a. Type of Work		7. Unit Agreement Name	
b. Type of Well DRILL <input checked="" type="checkbox"/> DEEPEN <input type="checkbox"/> PLUG BACK <input type="checkbox"/>		8. Farm or Lease Name	
c. Name of Operator		State Com A	
Tenneco Oil Company		9. Well No.	
1860 Lincoln St., Suite 1200, Denver, Colorado 80203		#2A	
1. Address of Operator		10. Field and Pool, or Wildcat	
1860 Lincoln St., Suite 1200, Denver, Colorado 80203		Blanco Mesa Verde	
2. Location of Well		12. County	
UNIT LETTER C LOCATED 790 FEET FROM THE North LINE		San Juan	
AND 1850 FEET FROM THE West LINE OF SEC. 16 TWP. 30N RGE. 9W NMPM			
19. Proposed Depth		19A. Formation	
+ 5425		Blanco Mesa Verde	
20. Rotary or C.T.		Rotary	
21. Elevations (Show whether DE, RT, etc.)		22. Approx. Date Work will start	
6076' GL		Upon Approval	
21A. Kind & Status Plug. Bond		21B. Drilling Contractor	
Blanket Bond		Coleman	

PROPOSED CASING AND CEMENTING PROGRAM

SIZE OF HOLE	SIZE OF CASING	WEIGHT PER FOOT	SETTING DEPTH	QUANTITY OF CEMENT
12-1/4"	9-5/8"	36#	± 200'	Suff. to circulate to surface.
8-3/4"	7"	23#	± 3405'	Suff. to cement back to surface.
6-1/8"	4-1/2"	10.5#	± 3105'-5725'	Suff. to cement back to 7" csg

Plan to drill well as follows:

1. MIRURT, drill 12-1/4" hole to ± 200'.
2. Set and cement 9-5/8" casing to ± 200' & cement with suff. cement to circ. to surface.
3. Drill out with 8-3/4" bit to ± 3405'.
4. Run 7" casing and cement back to surface casing.
5. Drill out of 7" using gas as the circulating fluid, do not drill more than 10' below the 7" casing shoe until the hole has dried up completely and is dusting.
6. Drill the hole to T. D., log the hole dry as requested by drillsite geologist.
7. Run 4-1/2" liner to T. D., load hole with mud and cement liner back to top of 4-1/2" Set liner hanger and POH w/drill pipe.
8. This well will be completed through casing perforations and stimulated as necessary to establish commercial production.
9. Clean up area.
10. Approximately 8 days will be required to drill this well.
11. The gas has been dedicated to Southern Union Gathering Co. EXPIRES 1-25-77

IN ABOVE SPACE DESCRIBE PROPOSED PROGRAM: A proposal is to deepen or plug back, give data on present productive zone and proposed new productive zone. If proposal is to drill or deepen directionally, give pertinent data on subsurface locations and measured and true vertical depths. Give blowout preventer program, if any.

I hereby certify that the information above is true and complete to the best of my knowledge and belief.

Signed A. H. Myer Title Div. Production Manager Date 10/21/76

(This space for State Use)

APPROVED BY AR Kendrick TITLE _____ DATE _____

CONDITIONS OF APPROVAL, IF ANY:

**NEW MEXICO OIL CONSERVATION COMMISSION
WELL LOCATION AND ACERAGE DEDICATION PLAT**

All distances must be from the outer boundaries of the Section

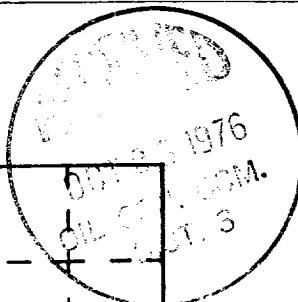
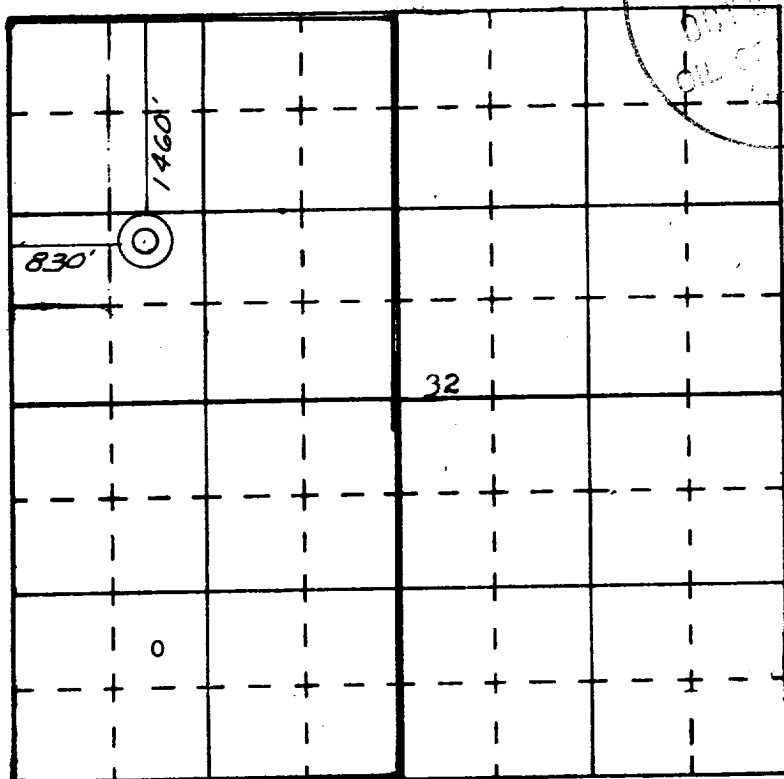
Operator TENNECO OIL COMPANY			Lease STATE COMM.		Well No. 1-A
Unit Letter E	Section 32	Township 30 NORTH	Range 9 WEST	County SAN JUAN	
Actual Footage Location of Well: 1460 feet from the NORTH line and 830 feet from the WEST line					
Ground Level Elev. 5834	Producing Formation Blanco Mesa Verde		Pool Blanco Mesa Verde	Dedicated Acreage: W/320	Acres

1. Outline the acreage dedicated to the subject well by colored pencil or hatchure marks on the plat below.
2. If more than one lease is dedicated to the well, outline each and identify the ownership thereof (both as to working interest and royalty),
3. If more than one lease of different ownership is dedicated to the well, have the interests of all owners been consolidated by communitization, unitization, force-pooling, etc?

() Yes () No If answer is "yes," type of consolidation

If answer is "no," list the owners and tract descriptions which have actually consolidated. (Use reverse side of this form if necessary.)

No allowable will be assigned to the well until all interests have been consolidated (by communitization, unitization, forced-pooling, or otherwise) or until a non standard unit, eliminating such interests, has been approved by the Commission.



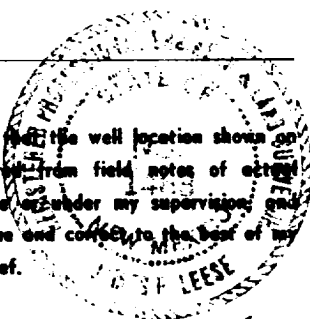
CERTIFICATION

I hereby certify that the information contained herein is true and complete to the best of my knowledge and belief.

Name Ted F. Drake
 Position Production Clerk
 Company Tenneco Oil Company
 Date 10/21/76

I hereby certify that the well location shown on this plat was plotted from field notes of actual surveys made by me or under my supervision and that the same is true and correct to the best of my knowledge and belief.

14 October 1976
 Date Surveyed
James P. Lease
 Registered Professional Engineer
 and/or Land Surveyor **James P. Lease**



1463
 Certificate No.