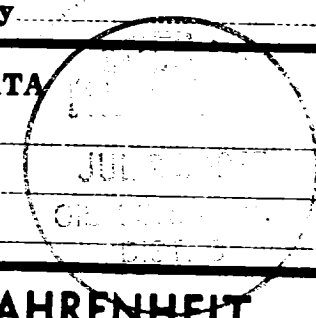


**S. & R.**  
**SALES & SERVICE**

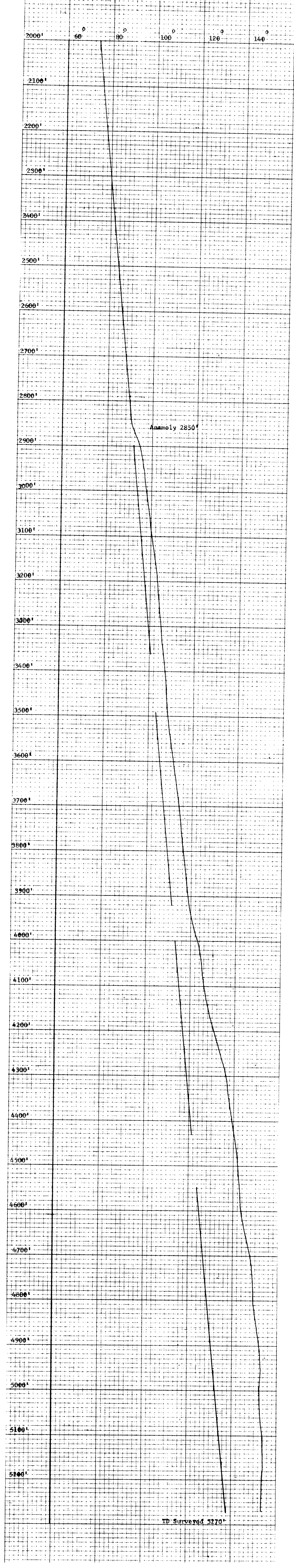
**TEMPERATURE SURVEY**

COMPANY El Paso Oil Co.  
 WELL 1 LEASE 1  
 COUNTY Seminole STATE Okla  
 SEC. E. 2 TWP. 30 RGE. 9  
 APPROX. TOP CEMENT 2000'  
 Survey Begins at 2000' Ft. Ends at 570' Ft.  
 Approx. Fill-Up \_\_\_\_\_ Max. Temp. \_\_\_\_\_  
 Log Measured From 2000' Run No. 1  
 Casing Size \_\_\_\_\_ Casing Depth \_\_\_\_\_ Diam of Hole \_\_\_\_\_ Depth \_\_\_\_\_  
 from \_\_\_\_\_ to \_\_\_\_\_ from \_\_\_\_\_ to \_\_\_\_\_  
 from \_\_\_\_\_ to \_\_\_\_\_ from \_\_\_\_\_ to \_\_\_\_\_  
 Date of Cementing 7-15-77 Time \_\_\_\_\_ A.M.  
 Date of Survey 7-15-77 Time \_\_\_\_\_ P.M.  
 Amount of Cement 100 Sbs. Class "A" w/ 100 Lbs. Ft. Fine Silica  
 Recorded by Wilson Witnessed by \_\_\_\_\_

REMARKS OR OTHER DATA  
D. V. Pool @ 2850'



**TEMPERATURE IN DEGREES FAHRENHEIT**



TD Surveyed 5270'