

NEW MEXICO OIL CONSERVATION COMMISSION
WELL LOCATION AND ACREAGE DEDICATION PLAT

* Location moved - Corrected Plat

Form C-102
Supersedes C-128
Effective 1-1-65

All distances must be from the outer boundaries of the Section.

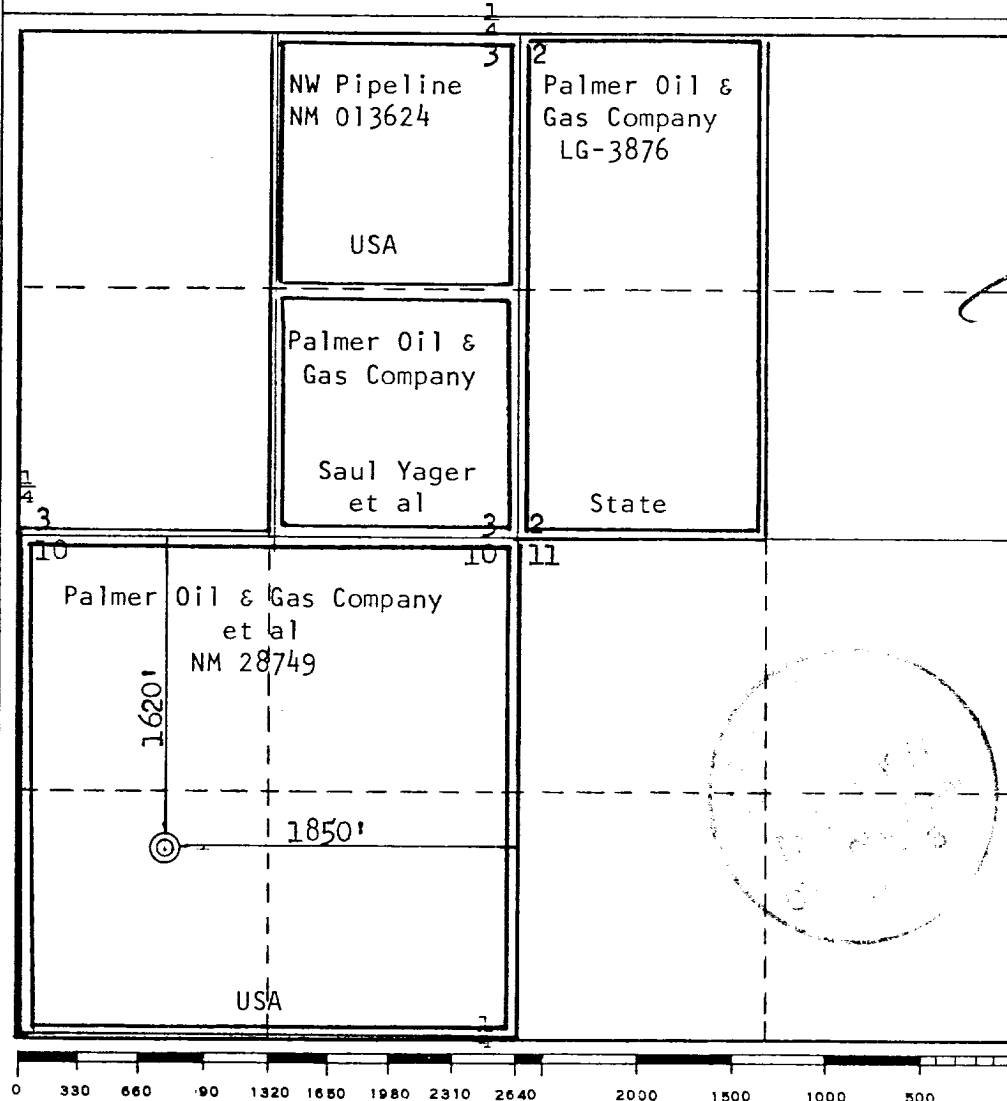
Operator Palmer Oil Company			Lease Federal		Well No. 2
Unit Letter G	Section 10	Township 31N	Range 7W	County San Juan	
Actual Footage Location of Well:					
1620		feet from the North	line and 1850	feet from the East	line
Ground Level Elev. 6502	Producing Formation Mesaverde		Pool Blanco Mesaverde	Dedicated Acreage: 320.00 Acres	

1. Outline the acreage dedicated to the subject well by colored pencil or hachure marks on the plat below.
2. If more than one lease is dedicated to the well, outline each and identify the ownership thereof (both as to working interest and royalty).
3. If more than one lease of different ownership is dedicated to the well, have the interests of all owners been consolidated by communitization, unitization, force-pooling, etc?

☐ Yes ☒ No If answer is "yes," type of consolidation _____

If answer is "no," list the owners and tract descriptions which have actually been consolidated. (Use reverse side of this form if necessary.) _____

No allowable will be assigned to the well until all interests have been consolidated (by communitization, unitization, forced-pooling, or otherwise) or until a non-standard unit, eliminating such interests, has been approved by the Commission.



CERTIFICATION

I hereby certify that the information contained herein is true and complete to the best of my knowledge and belief.

Name
L. C. Campbell

Position
Land Manager

Company
Palmer Oil & Gas Company

Date
April 4, 1977

I hereby certify that the well location shown on this plat was plotted from field notes of actual surveys made by me or under my supervision, and that the same is true and correct to the best of my knowledge and belief.

Date Surveyed
March 24, 1977

Registered Professional Engineer and/or Land Surveyor

Fred B. Kerr Jr.

Certificate No.

3950