

NO. OF COPIES RECEIVED	6
DISTRIBUTION	
SANTA FE	1
FILE	1
U.S.G.S.	2
LAND OFFICE	1
OPERATOR	1

NEW MEXICO OIL CONSERVATION COMMISSION

30-045-20441
Form C-101
Revised 1-1-65

5A. Indicate Type of Lease
STATE FEE

5. State Oil & Gas Lease No.
LG-3876

EXPIRES 6-26-77

APPLICATION FOR PERMIT TO DRILL, DEEPEN, OR PLUG BACK

1a. Type of Work
DRILL DEEPEN PLUG BACK

b. Type of Well
OIL WELL GAS WELL OTHER SINGLE ZONE MULTIPLE ZONE

2. Name of Operator
Palmer Oil & Gas Company

3. Address of Operator
P. O. Box 2564, Billings, Montana 59103

4. Location of Well
UNIT LETTER _____ LOCATED 800 FEET FROM THE South LINE
AND 1675 FEET FROM THE West LINE OF SEC. 2 TWP. 31N RGE. 7W NMPM

7. Unit Agreement Name
8. Farm or Lease Name
State
9. Well No.
No. 1A
10. Field and Pool, or Wildcat
Blanco-Mesaverde
12. County
San Juan

19. Proposed Depth
6000'

19A. Formation
Mesaverde

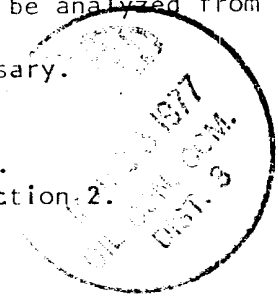
20. Rotary or C.T.
Rotary

21. Elevations (Show whether DF, RT, etc.)
21A. Kind & Status Plug. Band
Blanket
21B. Drilling Contractor
22. Approx. Date Work will start
June 1, 1977

23. PROPOSED CASING AND CEMENT PROGRAM

SIZE OF HOLE	SIZE OF CASING	WEIGHT PER FOOT	SETTING DEPTH	SACKS OF CEMENT	EST. TOP
13 3/4"	9 5/8"	32#	200'	200	Surface
8 3/4"	7 "	20#	3800'	200	2800'
6 1/4"	4 1/2"	10.5#	6000'	225	3600'

- Palmer will drill a 6,000' Mesa Verde test in SE $\frac{1}{4}$ SW $\frac{1}{4}$ Section 2, Township 31 North, Range 7 West.
- Well to be drilled by rotary tools. Set 200' of 9 5/8" casing and cement to surface; drill 8 3/4" hole to approximately 3800' and set 7" casing. Drill 6 1/4" hole with gas to T.D. and set 4 1/2" liner.
- IES and Porosity Logs will be run at T.D. All potential zones will be analyzed from surface to T.D.
- After perforating, the productive zones will be fractured, if necessary.
- The gas is not dedicated.
- A Shaffer 8" - 3000 psi BOP with blind and pipe rams to be used.
- See Commission Order No. R-5364 for approval of unorthodox location.
- Spacing unit comprises the E $\frac{1}{2}$ SW $\frac{1}{4}$, SE $\frac{1}{4}$ and Lots 5, 6, 7, and 8 of Section 2.



IN ABOVE SPACE DESCRIBE PROPOSED PROGRAM: IF PROPOSAL IS TO DEEPEN OR PLUG BACK, GIVE DATA ON PRESENT PRODUCTIVE ZONE AND PROPOSED NEW PRODUCTIVE ZONE. GIVE BLOWOUT PREVENTER PROGRAM, IF ANY.

I hereby certify that the information above is true and complete to the best of my knowledge and belief.

Signed Robert D. Ballantyne Title Drilling Superintendent Date March 18, 1977
(This space for State Use)

APPROVED BY AK Kendrick TITLE _____ DATE _____
 CONDITIONS OF APPROVAL, IF ANY:

NEW MEXICO OIL CONSERVATION COMMISSION
WELL LOCATION AND ACREAGE DEDICATION PLAT

Form C-102
Supersedes C-128
Effective 1-1-65

All distances must be from the outer boundaries of the Section.

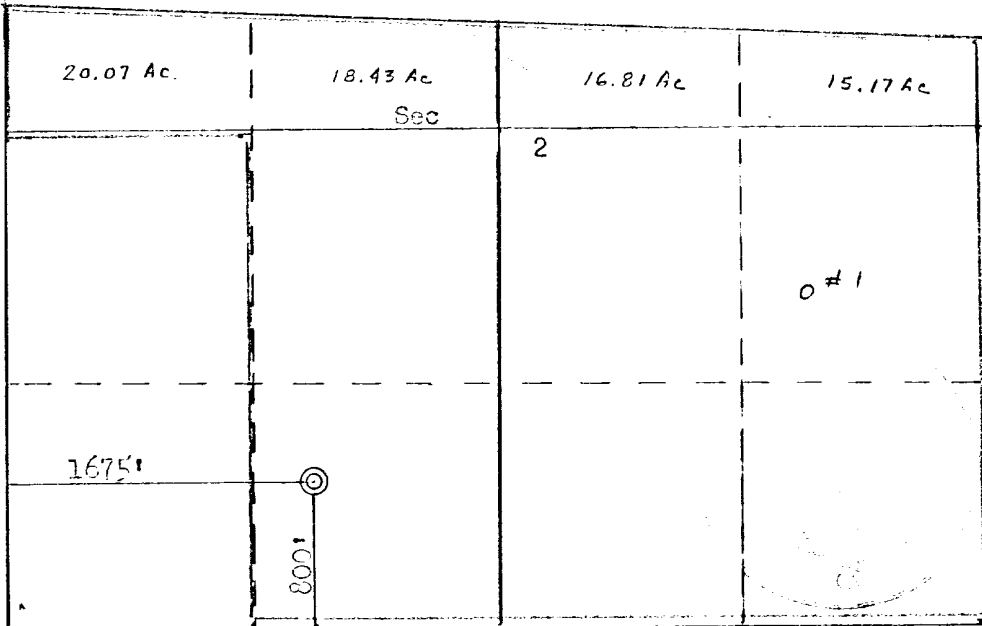
Operator Palmer Oil Company		Lease State			Well No. 1A
Unit Letter N	Section 2	Township 31N	Range 7W	County San Juan	
Actual Footage Location of Well: 800 feet from the South line and 1675 feet from the West line					
Ground Level Elev. 6553	Producing Formation Mesaverde	Pool Blanco-Mesaverde		Dedicated Acreage: 310.48 Acres	

1. Outline the acreage dedicated to the subject well by colored pencil or hachure marks on the plat below.
2. If more than one lease is dedicated to the well, outline each and identify the ownership thereof (both as to working interest and royalty).
3. If more than one lease of different ownership is dedicated to the well, have the interests of all owners been consolidated by communitization, unitization, force-pooling, etc?

Yes No If answer is "yes," type of consolidation _____

If answer is "no," list the owners and tract descriptions which have actually been consolidated. (Use reverse side of this form if necessary.) _____

No allowable will be assigned to the well until all interests have been consolidated (by communitization, unitization, forced-pooling, or otherwise) or until a non-standard unit, eliminating such interests, has been approved by the Commission.



Scale: 1"=1000'

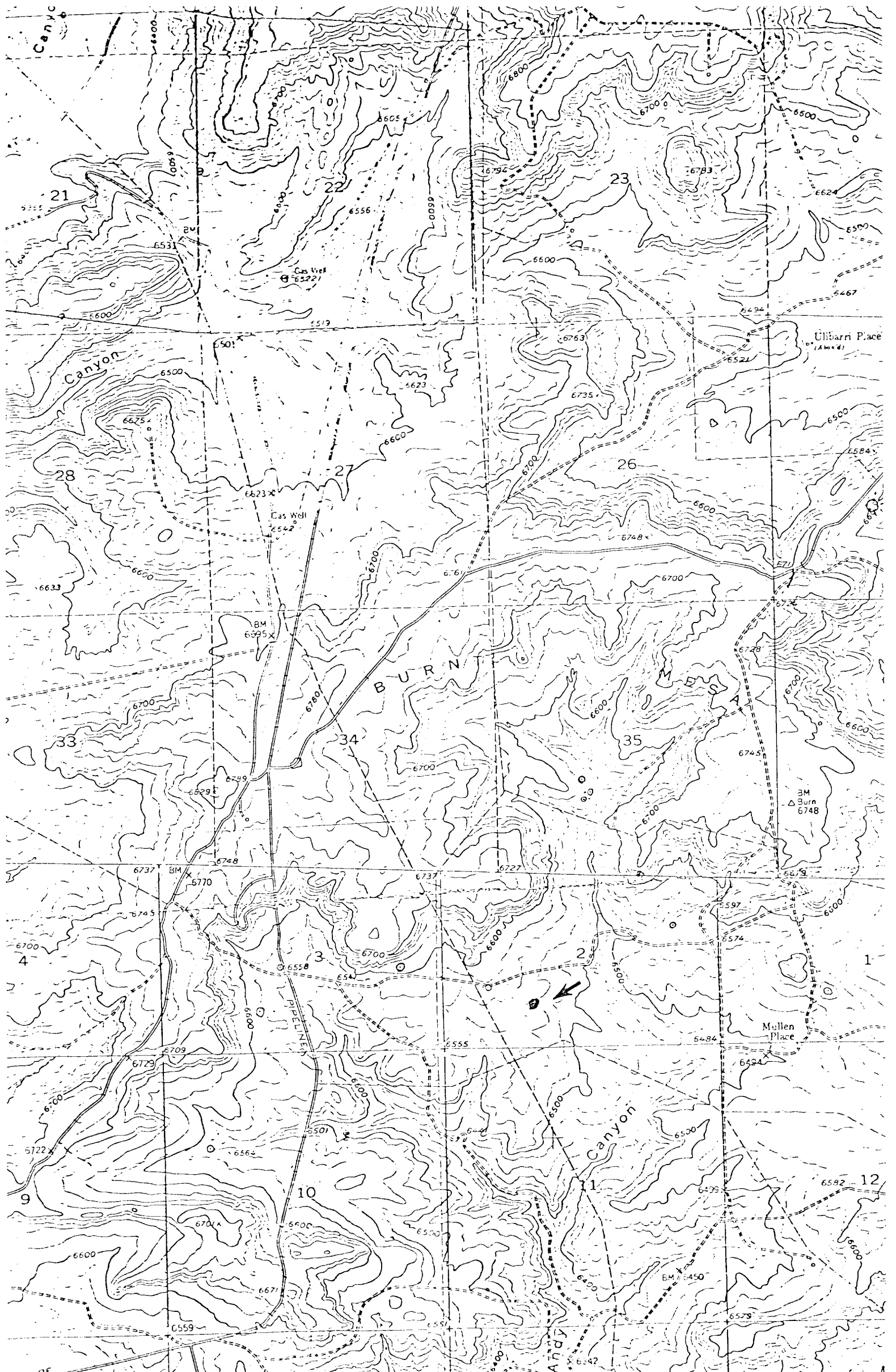
CERTIFICATION

I hereby certify that the information contained herein is true and complete to the best of my knowledge and belief.

Name
L. C. Campbell
Position
Land Manager
Company
Palmer Oil & Gas Company
Date
3/22/77

I hereby certify that the well location shown on this plat was plotted from field notes of actual surveys made by me or under my supervision, and that the same is true and correct to the best of my knowledge and belief.

Date Surveyed
March 16, 1977
Registered Professional Engineer
and Land Surveyor
Fred R. Vary, Jr.
Certificate No.
3950



Vicinity Map for
PALMER OIL COMPANY #1A State
800' FSL 1675' FWL Sec 2-131N-R7W