

UNITED STATES
DEPARTMENT OF THE INTERIOR
GEOLOGICAL SURVEY30-095-22499
5. LEASE DESIGNATION AND SERIAL NO.

SF-078212

6. IF INDIAN, ALLOTTEE OR TRIBE NAME

7. UNIT AGREEMENT NAME

8. FARM OR LEASE NAME

Federal 1-9

9. WELL NO.

1

10. FIELD AND POOL, OR WILDCAT

Wildcat - Fruitland

11. SEC., T., R., M., OR BLK.
AND SURVEY OR AREA

Sec. 9, T 30N, R 13W

12. COUNTY OR PARISH

San Juan

13. STATE

New Mexico

APPLICATION FOR PERMIT TO DRILL, DEEPEN, OR PLUG BACK

1a. TYPE OF WORK

DRILL ☒DEEPEN ☐PLUG BACK ☐

b. TYPE OF WELL

OIL
WELL ☐GAS
WELL ☒

OTHER

SINGLE
ZONE ☐MULTIPLE
ZONE ☐

2. NAME OF OPERATOR

Curtis J. Little

3. ADDRESS OF OPERATOR

P.O. Box 80068, Albuquerque, New Mexico 87108

4. LOCATION OF WELL (Report location clearly and in accordance with any State requirements.)*
At surface

1826' FSL & 1550' FEL

At proposed prod. zone

Same

14. DISTANCE IN MILES AND DIRECTION FROM NEAREST TOWN OR POST OFFICE*

4 miles north of Farmington, New Mexico

15. DISTANCE FROM PROPOSED*

LOCATION TO NEAREST
PROPERTY OR LEASE LINE, FT.
(Also to nearest drlg. unit line, if any)

1550'

16. NO. OF ACRES IN LEASE

1400

17. NO. OF ACRES ASSIGNED
TO THIS WELL

160

18. DISTANCE FROM PROPOSED LOCATION*
TO NEAREST WELL, DRILLING, COMPLETED,
OR APPLIED FOR, ON THIS LEASE, FT.

1644'

(Dakota gas well)

19. PROPOSED DEPTH

1600

20. ROTARY OR CABLE TOOLS

Rotary

21. ELEVATIONS (Show whether DF, RT, GR, etc.)

5583 Gr

22. APPROX. DATE WORK WILL START*

April 20, 1977

23.

PROPOSED CASING AND CEMENTING PROGRAM

SIZE OF HOLE	SIZE OF CASING	WEIGHT PER FOOT	SETTING DEPTH	QUANTITY OF CEMENT
7 7/8"	5 1/2"	15.5#	32'	7 sx
4 3/4"	2 7/8"	6.4#	1600'	200 sx to circulate

This Fruitland test will be drilled by a small rotary rig and Schlumberger log run at TD.

If commercial, pipe will be set and cemented to surface. Zone will be perforated and fractured.

A blowout preventer will be operational at all times during drilling.

Gas, if found, is dedicated to Southern Union Production Company.

IN ABOVE SPACE DESCRIBE PROPOSED PROGRAM: If proposal is to deepen or plug back, give data on present productive zone and proposed new productive zone. If proposal is to drill or deepen directionally, give pertinent data on subsurface locations and measured and true vertical depths. Give blowout preventer program, if any.

24.

SIGNED

Curtis J. Little

TITLE Operator

DATE April 15, 1977

(This space for Federal or State office use)

PERMIT NO.

APPROVAL DATE

APPROVED BY

TITLE

DATE

CONDITIONS OF APPROVAL, IF ANY:

*See Instructions On Reverse Side

NEW MEXICO OIL CONSERVATION COMMISSION

WELL LOCATION AND ACERAGE DEDICATION PLAT

All distances must be from the outer boundaries of the Section

Operator CURTIS LITTLE			Lease FEDERAL		Well No. 1 - 9
Unit Letter K	Section 9	Township 30 NORTH	Range 13 WEST	County SAN JUAN COUNTY	
Actual Footage Location of Well: 1826 feet from the SOUTH line and 1550 feet from the WEST EAST line					
Ground Level Elev. 5583	Producing Formation FRUITLAND	Pool WILDCAT	Dedicated Acreage: 160 Acres		

1. Outline the acreage dedicated to the subject well by colored pencil or hachure marks on the plat below.
2. If more than one lease is dedicated to the well, outline each and identify the ownership thereof (both as to working interest and royalty),
3. If more than one lease of different ownership is dedicated to the well, have the interests of all owners been consolidated by communitization, unitization, force-pooling, etc?

() Yes () No If answer is "yes," type of consolidation

If answer is "no," list the owners and tract descriptions which have actually consolidated. (Use reverse side of this Form if necessary.)

No allowable will be assigned to the well until all interests have been consolidated (by communitization, unitization, forced-pooling, or otherwise) or until a non standard unit, eliminating such interests, has been approved by the Commission.

CERTIFICATION

I hereby certify that the information contained herein is true and complete to the best of my knowledge and belief.

Curtis J. Little
Name

Curtis J. Little

Position

Operator

Company

Curtis J. Little

Date

APPROVED PROFESSIONAL ENGINEER & LAND SURVEYOR
STATE OF NEW MEXICO
NO. 1463
JAMES P. LEASE

I hereby certify that the well location shown on this plat was plotted from field notes of actual surveys made by me or under my supervision, and that the same is true and correct to the best of my knowledge and belief.

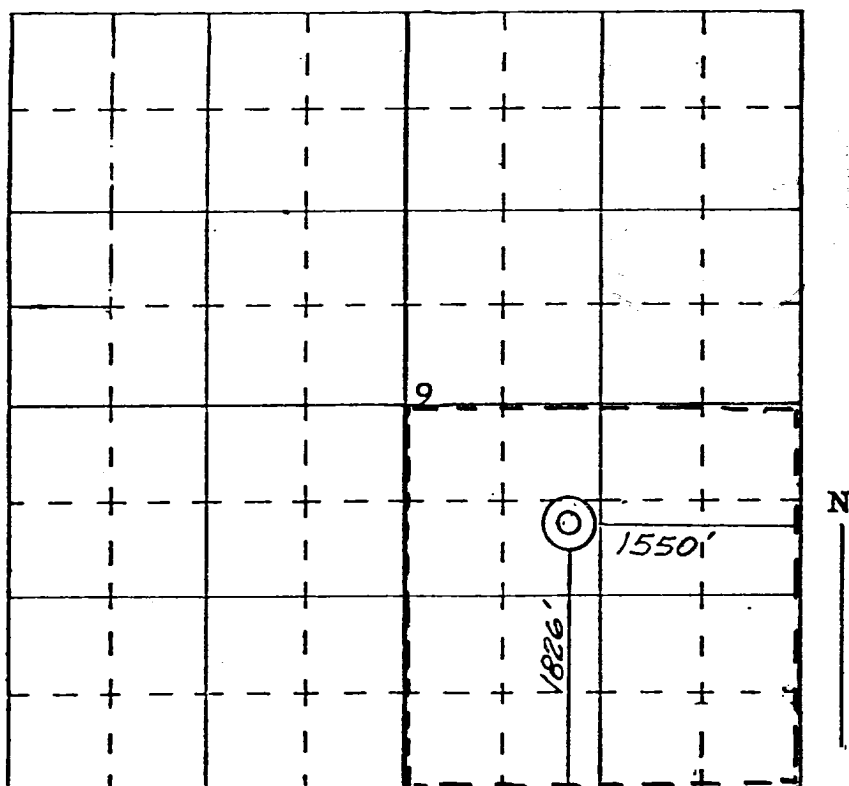
30 March 1977

Date Surveyed

James P. Lease
Registered Professional Engineer
and/or Land Surveyor James P. Lease

1463

Certificate No.



SCALE—4 INCHES EQUALS 1 MILE

SAN JUAN ENGINEERING COMPANY, FARMINGTON, N. M.