

UNITED STATES
DEPARTMENT OF THE INTERIOR
GEOLOGICAL SURVEY

reverse side)

30-095-22521

APPLICATION FOR PERMIT TO DRILL, DEEPEN, OR PLUG BACK

1a. TYPE OF WORK
DRILL ☒ DEEPEN ☒ PLUG BACK ☐
b. TYPE OF WELL
OIL WELL ☐ GAS WELL ☒ OTHER ☐

2. NAME OF OPERATOR
TENNECO OIL COMPANY

3. ADDRESS OF OPERATOR
1860 Lincoln St., Suite 1200, Denver, Colorado 80295

4. LOCATION OF WELL (Report location clearly and in accordance with any State requirements.)
At surface
1460 'FSL and 1490 FEL
Unit K
At proposed prod. zone

14. DISTANCE IN MILES AND DIRECTION FROM NEAREST TOWN OR POST OFFICE*
See Point 1:b of Surface Use Plan

15. DISTANCE FROM PROPOSED* LOCATION TO NEAREST PROPERTY OR LEASE LINE, FT. (Also to nearest drlg. unit line, if any)
16. NO. OF ACRES IN LEASE
+290.60
17. NO. OF ACRES ASSIGNED TO THIS WELL
+290.69 as of 1965
18. DISTANCE FROM PROPOSED LOCATION* TO NEAREST WELL, DRILLING, COMPLETED, OR APPLIED FOR, ON THIS LEASE, FT.
19. PROPOSED DEPTH
+4953'
20. ROTARY OR CABLE TOOLS
Rotary

21. ELEVATIONS (Show whether DF, RT, GR, etc.)
5817'GL

23. PROPOSED CASING AND CEMENTING PROGRAM

SIZE OF HOLE	SIZE OF CASING	WEIGHT PER FOOT	SETTING DEPTH	QUANTITY OF CEMENT
12-1/4"	9-5/8"	36#	+ 200	Suff. to circulate to surface.
8-3/4"	7"	23#	+ 2800'	Suff. to cement to surface csg.
6-1/8"	4-1/2"	10.5#	+ 4953'	Suff. to cement to 7" csg.

- The geologic name of this surface formation is (San Jose Eocene/~~XXXXXXXXXX~~)

&3Formation Tops (Estimated)

Pictured Cliffs	+	2503	'Possible oil or gas producer
Cliff House	+	4161	'Possible oil or gas producer
Menefee	+	4278	'Possible oil or gas producer
Point Lookout	+	4699	'Possible oil or gas producer
Mancos Shale	+	4779	'

- Run 9-5/8" OD, K-55 new casing to +200' and circulate cement to surface. Run 7" OD, 23#, K-55 new casing to +2800' and circulate cement up through the 9-5/8" csg. Run a 4 1/2" csg. Liner from 200 above bottom of 7" csg. to T.D. and circulate cement back to the top of 4 1/2" csg. Casinghead will be a 10" 900 series w/a 3000 psi. rating.

- Blowout preventors: Hydraulic, double ram, 10". One set of rams will be provided for each size drill pipe in the hole. One set of blind rams at all times. Fill line will be 2", kill line will be 2", choke relief line will be 2" with variable choke.

- We will use; spud mud from 0-+200'; Gel Chemical w/low solids as needed to maintain good hole conditions from +200'-+2800'; Compressed gas from +2800'to T.D..

- Auxiliary Equipment

- Kelly cock will be in use at all times.
- Stabbing valve to fit drill pipe will be present on floor at all times.
- Mud monitoring will be visual, no abnormal pressures are anticipated in this area.
- Rotating head will be used when drilling with gas.

- An AOF test will be taken at the completion of this well. No cores will be taken. Gamma Ray and Compensated Density logs will be run. Any other evaluation that may be necessary during the drilling of this well will be conducted as needed.

- No abnormal pressures or temperatures are anticipated. See point #5 for blowout prevention equipment.

0-The drilling of this well will take approximately eight days. The gas is contracted to Southern Union Gathering Co.

IN ABOVE SPACE DESCRIBE PROPOSED PROGRAM: If proposal is to deepen or plug back, give data on present productive zone and proposed new productive zone. If proposal is to drill or deepen directionally, give pertinent data on subsurface locations and measured and true vertical depths. Give blowout preventer program, if any.

24. SIGNED D.A. Myers TITLE Div. Production Manager DATE APR 15 1977
(This space for Federal State office use)

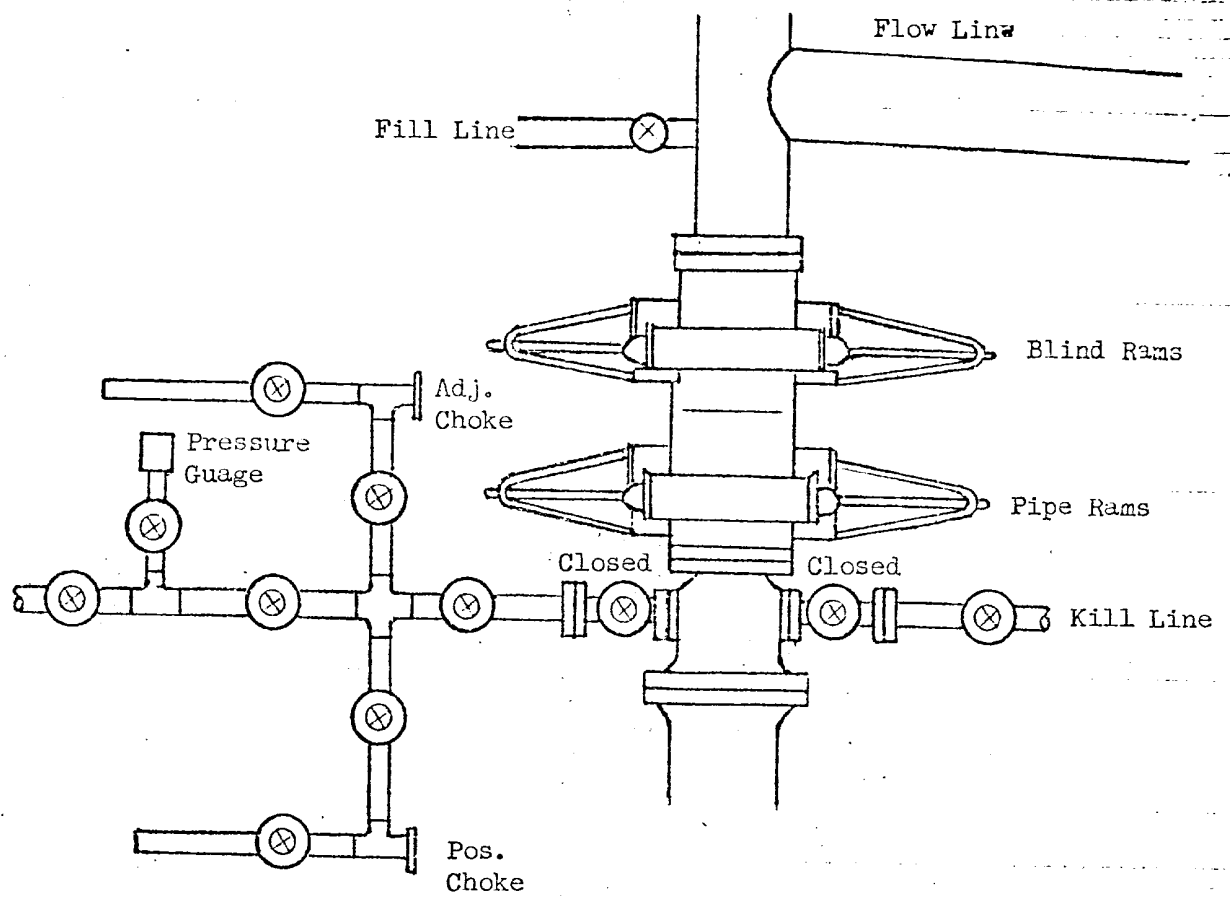
PERMIT NO. APPROVAL DATE

APPROVED BY TITLE DATE

CONDITIONS OF APPROVAL, IF ANY:

NWU-350

okap



All valves 2"

All BOPs, flanges, spools, valves, & lines must be series 900 or 3000 psi working press.

Choke manifold must be at ground level and extended out from under substructure.

TENNECO OIL COMPANY

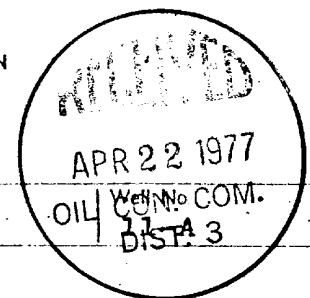
REQUIRED MINIMUM BLOWOUT PREVENTOR

HOOKUP

Denver, Colorado

**NEW MEXICO OIL CONSERVATION COMMISSION
WELL LOCATION AND ACERAGE DEDICATION PLAT**

All distances must be from the outer boundaries of the Section



Operator TENNECO OIL COMPANY			Lease FLORANCE	
Unit Letter K	Section 30	Township 30 NORTH	Range 8 WEST	County SAN JUAN
Actual Footage Location of Well: 1460 feet from the SOUTH line and 1490 feet from the EAST line				
Ground Level Elev. 5817	Producing Formation Blanco Mesa Verde	Pool Blanco Mesa Verde	Dedicated Average: 290.69 E/2 Acres	

1. Outline the acreage dedicated to the subject well by colored pencil or hatchure marks on the plat below.
2. If more than one lease is dedicated to the well, outline each and identify the ownership thereof (both as to working interest and royalty).
3. If more than one lease of different ownership is dedicated to the well, have the interests of all owners been consolidated by communization, unitization, force-pooling, etc?

(☒) Yes () No If answer is "yes," type of consolidation communization

If answer is "no," list the owners and tract descriptions which have actually consolidated. (Use reverse side of this form if necessary.) _____

No allowable will be assigned to the well until all interests have been consolidated (by communization, unitization, forced-pooling, or otherwise) or until a non standard unit, eliminating such interests, has been approved by the Commission.

CERTIFICATION

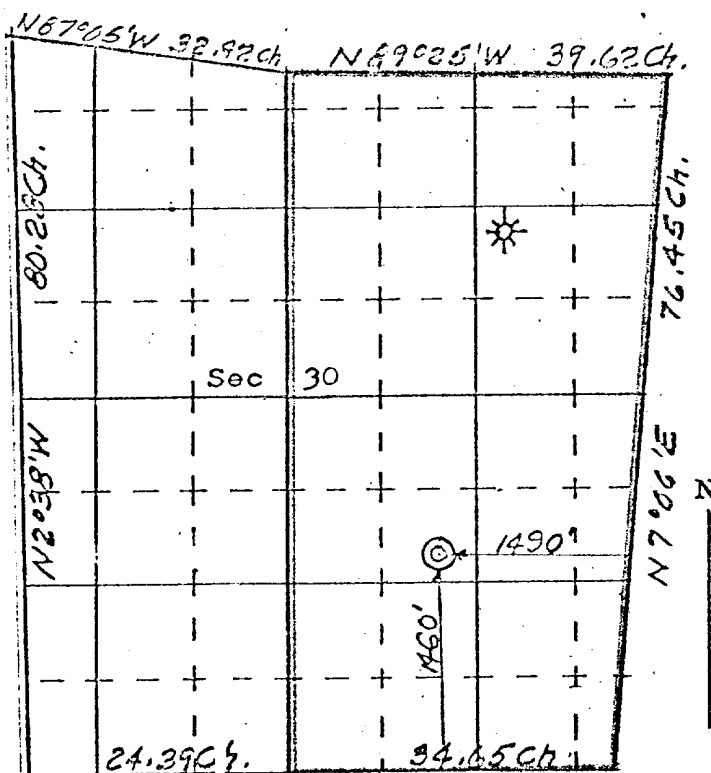
I hereby certify that the information contained herein is true and complete to the best of my knowledge and belief.

Name Ted J. Drury
 Position Production Analyst
 Company Tenneco Oil Company
 Date April 14, 1977

I hereby certify that the well location shown on this plat was plotted from field notes of actual surveys made by me or under my supervision, and that the same is true and correct to the best of my knowledge and belief.

4 April, 1977
 Date Surveyed
James P. Leese
 Registered Professional Engineer
 and/or Land Surveyor

James P. Leese
1463
 Certificate No.



SCALE—4 INCHES EQUALS 1 MILE **587°40'W**