

UNITED STATES
DEPARTMENT OF THE INTERIOR
GEOLOGICAL SURVEY

APPLICATION FOR PERMIT TO DRILL, DEEPEN, OR PLUG BACK

1a. TYPE OF WORK

DRILL ☒DEEPEN ☐PLUG BACK ☐

b. TYPE OF WELL

OIL
WELL ☐GAS
WELL ☒

OTHER

SINGLE
ZONE ☐MULTIPLE
ZONE ☒

2. NAME OF OPERATOR

Aztec Oil & Gas Company

3. ADDRESS OF OPERATOR

P. O. Drawer 570, Farmington, New Mexico

4. LOCATION OF WELL (Report location clearly and in accordance with any State requirements.)*

At surface

At proposed prod. zone

800' FSL & 800' FEL

14. DISTANCE IN MILES AND DIRECTION FROM NEAREST TOWN OR POST OFFICE*

15. DISTANCE FROM PROPOSED*

LOCATION TO NEAREST
PROPERTY OR LEASE LINE, FT.
(Also to nearest drlg. unit line, if any)

18. DISTANCE FROM PROPOSED LOCATION*

TO NEAREST WELL, DRILLING, COMPLETED,
OR APPLIED FOR, ON THIS LEASE, FT.

16. NO. OF ACRES IN LEASE

320

19. PROPOSED DEPTH

7258

17. NO. OF ACRES ADJACENT
TO THIS WELL

20. ROTARY OR CABLE TOOLS

Rotary

21. ELEVATIONS (Show whether DF, RT, GR, etc.)

6027' GR

22. APPROX. DATE WORK WILL START*

August 15, 1977

23.

PROPOSED CASING AND CEMENTING PROGRAM

| SIZE OF HOLE | SIZE OF CASING | WEIGHT PER FOOT | SETTING DEPTH | QUANTITY OF CEMENT |
|--------------|----------------|-----------------|---------------|--------------------|
| 13-3/4" | 9-5/8" | 36# | 300' | 270 sxs |
| 8-3/4" | 7" | 23# | 5425' | 290 sxs |
| 6-1/4" | 4-1/2" | 11.60# | 5275'-7258' | 235 sxs |
| | 2-3/8" | 4.7# | 7200' | |
| | 2-3/8" | 4.7# | 5100' | |

Surface formation is Nacimiento.

Top of Ojo Alamo is at 1136'.

Top of Pictured Cliffs is at 2463'.

A fresh water system will be used to drill to intermediate casing point.

An air system will be used for drilling to Total Depth.

It is anticipated that Gamma Ray Density and Gamma Ray Induction logs will be run at Total Depth.

It is anticipated that IES and Gamma Ray Density logs will be run at intermediate depth.

No abnormal pressures or poisonous gases are anticipated in this well.

It is expected that this well be drilled before September 1, 1977. This depends on time required for approvals, rig availability and the weather.

We will follow the surface restoration plan set out by the appropriate surface agency and the U.S.G.S. Gas is dedicated.

IN ABOVE SPACE DESCRIBE PROPOSED PROGRAM. If proposal is to deepen or plug back, give data on present productive zone and proposed new productive zone. If proposal is to drill or deepen directionally, give pertinent data on subsurface locations and measured and true vertical depths. Give blowout preventer program, if any.

24.

SIGNED

TITLE

District Production Mgr.

DATE

July 12, 1977

(This space for Federal or State office use)

PERMIT NO.

APPROVAL DATE

APPROVED BY

TITLE

DATE

CONDITIONS OF APPROVAL, IF ANY:

*See Instructions On Reverse Side

JUL 15 1977

NEW MEXICO OIL CONSERVATION COMMISSION
WELL LOCATION AND ACREAGE DEDICATION PLAT

Form C-102
Supersedes C-128
Effective 1-1-65

All distances must be from the outer boundaries of the Section.

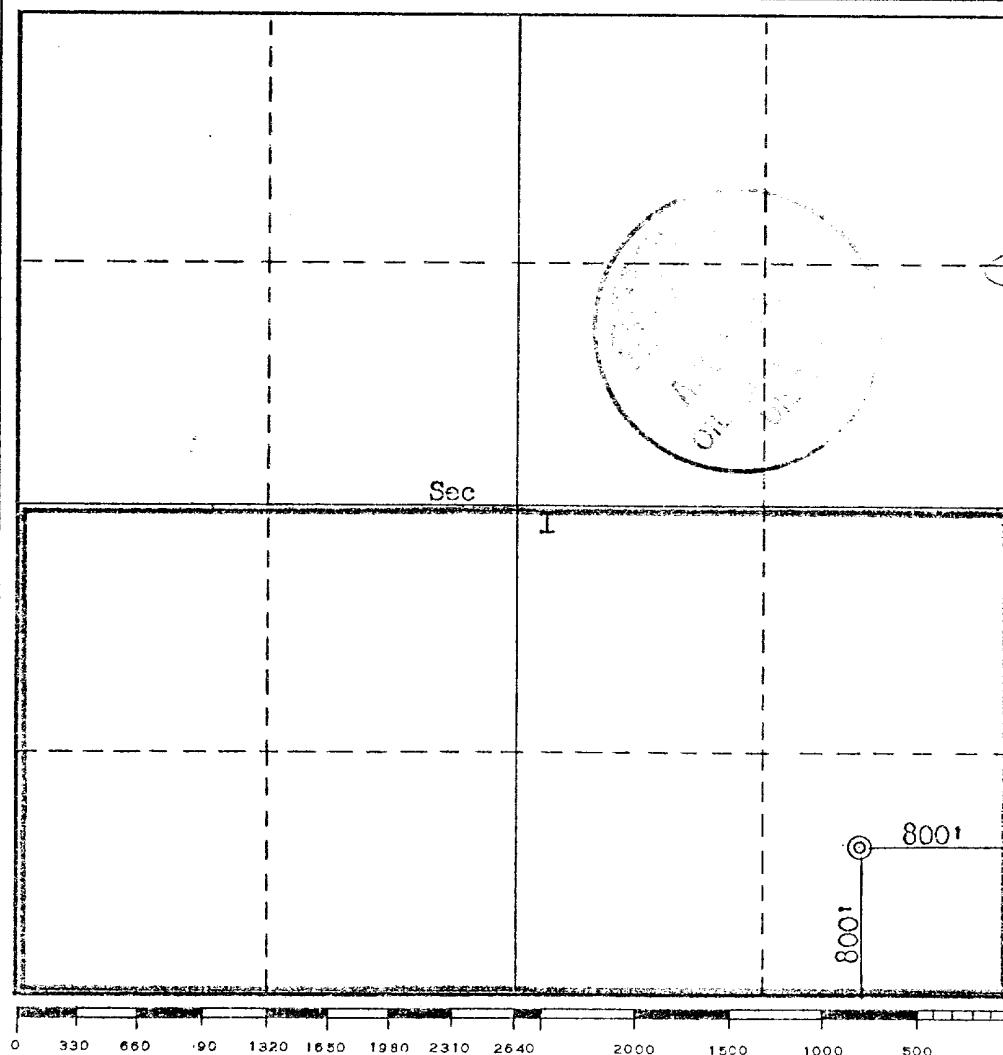
| | | | | | |
|--|---|------------------------------------|-----------------------|---|-----------------------|
| Operator Aztec Oil & Gas Company | | | Lease Nye | | Well No. 34 |
| Unit Letter P | Section 1 | Township 30N | Range 11W | County San Juan | |
| Actual Footage Location of Well: | | | | | |
| 800 feet from the South line and | | 800 feet from the East line | | | |
| Ground Level Elev. 6027 | Producing Formation Mesaverde | | Pool Blanco | Dedicated Acreage: 320.3227 Acres | |

1. Outline the acreage dedicated to the subject well by colored pencil or hachure marks on the plat below.
2. If more than one lease is dedicated to the well, outline each and identify the ownership thereof (both as to working interest and royalty).
3. If more than one lease of different ownership is dedicated to the well, have the interests of all owners been consolidated by communitization, unitization, force-pooling, etc?

☐ Yes ☐ No If answer is "yes," type of consolidation _____

If answer is "no," list the owners and tract descriptions which have actually been consolidated. (Use reverse side of this form if necessary.) _____

No allowable will be assigned to the well until all interests have been consolidated (by communitization, unitization, forced-pooling, or otherwise) or until a non-standard unit, eliminating such interests, has been approved by the Commission.



CERTIFICATION

I hereby certify that the information contained herein is true and complete to the best of my knowledge and belief.

Name _____
Position _____
District Production Mgr.
Company
Aztec Oil & Gas Company
Date
August 8, 1977

I hereby certify that the well location shown on this plat was plotted from field notes of actual surveys made by me or under my supervision, and that the same is true and correct to the best of my knowledge and belief.

Date Surveyed
June 24, 1977
Registered Professional Engineer and/or Land Surveyor
Fred B. Kerr Jr.
Certificate No.
3950

NEW MEXICO OIL CONSERVATION COMMISSION
WELL LOCATION AND ACREAGE DEDICATION PLAT

Form C-102
Supersedes C-128
Effective 1-1-65

All distances must be from the outer boundaries of the Section.

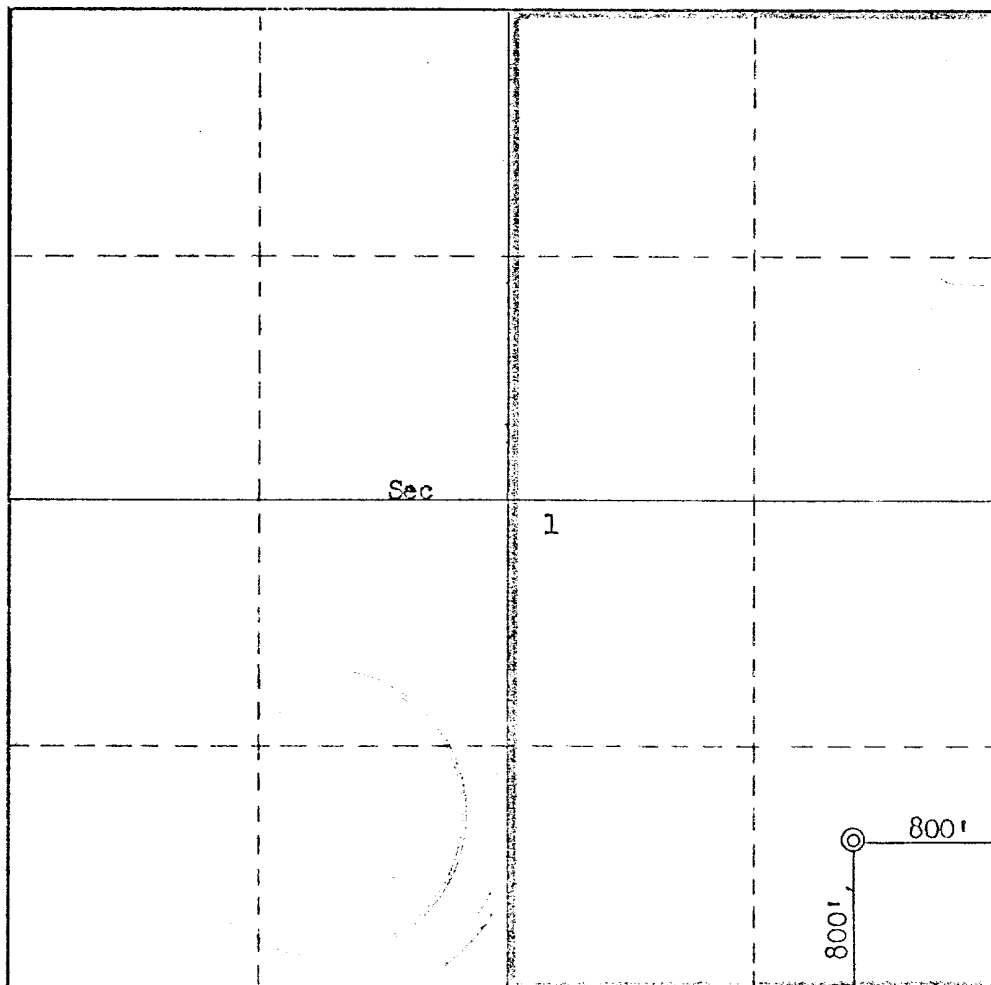
| | | | | | |
|--|--|------------------------|-----------------------------|---------------------------|---|
| Operator Aztec Oil & Gas Company | | | Lease Nye | | Well No. 34 |
| Unit Letter P | Section 1 | Township 30N | Range 11W | County San Juan | |
| Actual Footage Location of Well: 800 feet from the South line and 800 feet from the East line | | | | | |
| Ground Level Elev. 6027 | Producing Formation New Verde-Dakota | | Pool Placer-Basin | | Dedicated Acreage: 320 322.70 acres |

1. Outline the acreage dedicated to the subject well by colored pencil or hachure marks on the plat below.
2. If more than one lease is dedicated to the well, outline each and identify the ownership thereof (both as to working interest and royalty).
3. If more than one lease of different ownership is dedicated to the well, have the interests of all owners been consolidated by communitization, unitization, force-pooling, etc?

☐ Yes ☐ No If answer is "yes," type of consolidation _____

If answer is "no," list the owners and tract descriptions which have actually been consolidated. (Use reverse side of this form if necessary.) _____

No allowable will be assigned to the well until all interests have been consolidated (by communitization, unitization, forced-pooling, or otherwise) or until a non-standard unit, eliminating such interests, has been approved by the Commission.



CERTIFICATION

I hereby certify that the information contained herein is true and complete to the best of my knowledge and belief.

Name _____
Position
District Production Mgr.
Company
Aztec Oil & Gas Company
Date
July 12, 1977

I hereby certify that the well location shown on this plat was plotted from field notes of actual surveys made by me or under my supervision, and that the same is true and correct to the best of my knowledge and belief.

Date Surveyed
June 24, 1977
Registered Professional Engineer and/or Land Surveyor
Fred B. Kerr Jr.
Certificate No.
3950

AZTEC OIL & GAS COMPANY

P. O. DRAWER 570
FARMINGTON, NEW MEXICO 87401

July 12, 1977

United States Geological Survey
P. O. Box 959
Farmington, New Mexico 87401

Attention: Mr. P. T. McGrath

Enclosed please find map showing existing roads and planned access roads to Aztec Oil & Gas Company's Nye #18 well. The locations of tank batteries and flow lines will be on location with well. A burn pit will be provided for disposal of trash. Cuttings, drilling fluid and produced fluids will be put into the reserve pit and properly disposed of depending on amount and type of fluids.

There will be no camps or air strips.

Also enclosed is location layout showing approximate location of rig, pits and pipe racks.

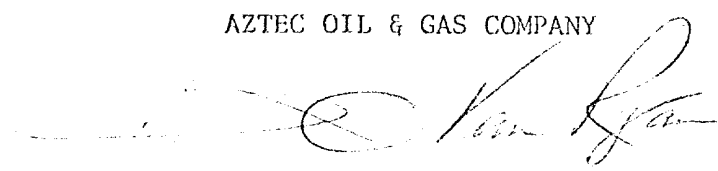
Water supply will be El Paso Knickerbocker Water Well.

The location will be restored according to Bureau of Land Management standards. This work will begin when all related construction is finished.

Mr. Bernie Mahony will be Aztec Oil and Gas Company's field representative supervision these operations.

Yours truly,

AZTEC OIL & GAS COMPANY



L. O. Van Ryan
District Production Manager

LOVR/dg

AZTEC OIL & GAS COMPANY

P. O. DRAWER 570
FARMINGTON, NEW MEXICO 87401

July 12, 1977

United States Geological Survey
P. O. Box 959
Farmington, New Mexico

Attention: Mr. P. T. McGrath

Re: Blowout Preventer Plan

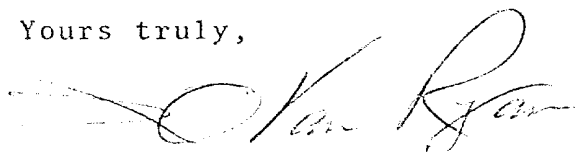
Dear Sir:

All drilling and completion rigs will be equipped with 8" or larger double gate hydraulic blowout preventers and a hydraulic operated closing unit with steel lines.

The preventer is 3000# working pressure and 6000# test.

All crews will be thoroughly trained in the operation of this preventer. The preventer will be tested at the beginning of every tower change to insure proper operation.

Yours truly,



L. O. Van Ryan
District Production Manager

LOVR/dg

AZTEC OIL & GAS COMPANY

P. O. DRAWER 570
FARMINGTON, NEW MEXICO 87401

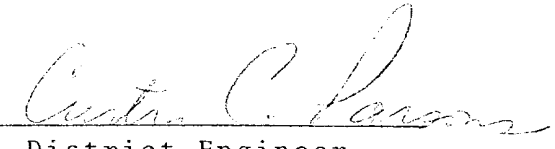
United States Geological Survey
P. O. Box 959
Farmington, New Mexico

Attention: Mr. P. T. McGrath

Dear Sir:

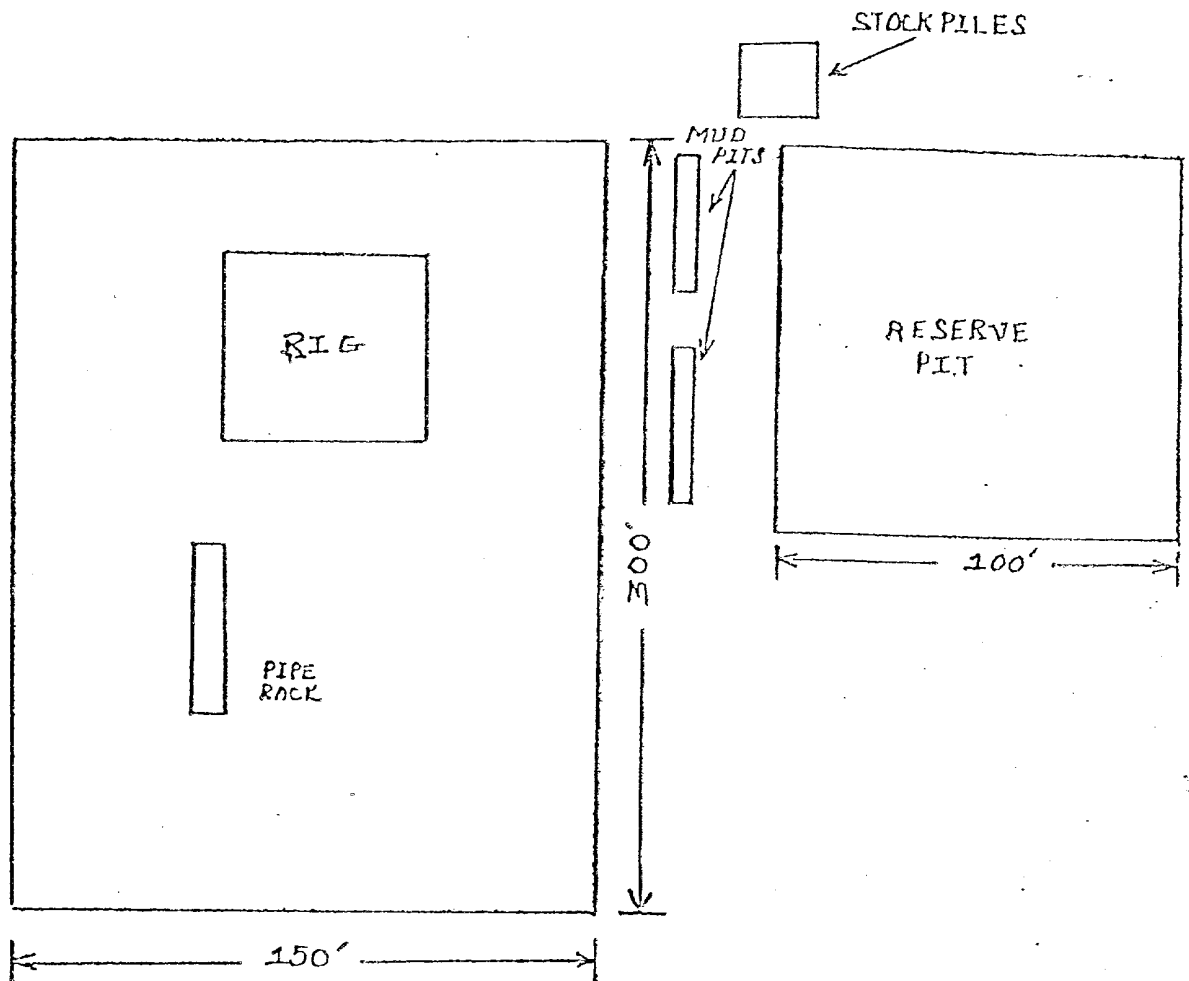
I hereby certify that I, or persons under my direct supervision, have inspected the proposed drillsite and access route; that I am familiar with the conditions which presently exist; that the statements made in this plan are, to the best of my knowledge, true and correct; and, that the work associated with the operations proposed herein be performed by Aztec Oil & Gas Company and its contractors and subcontractors in conformity with this plan and the terms and conditions under which it is approved.

Date: July 12, 1977

Name: 
Title: District Engineer

LOCATION LAYOUT

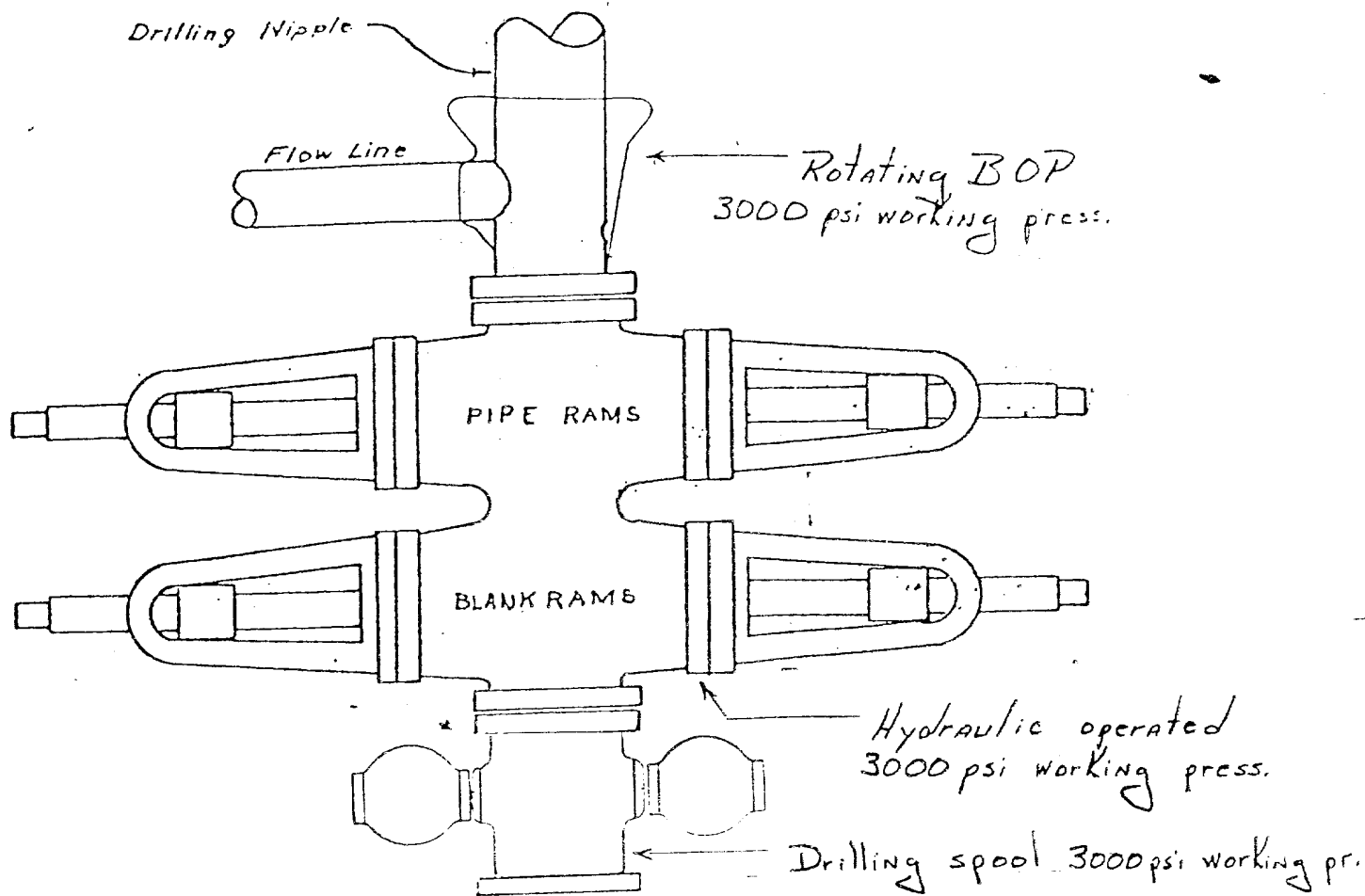
PIT
← 25' →



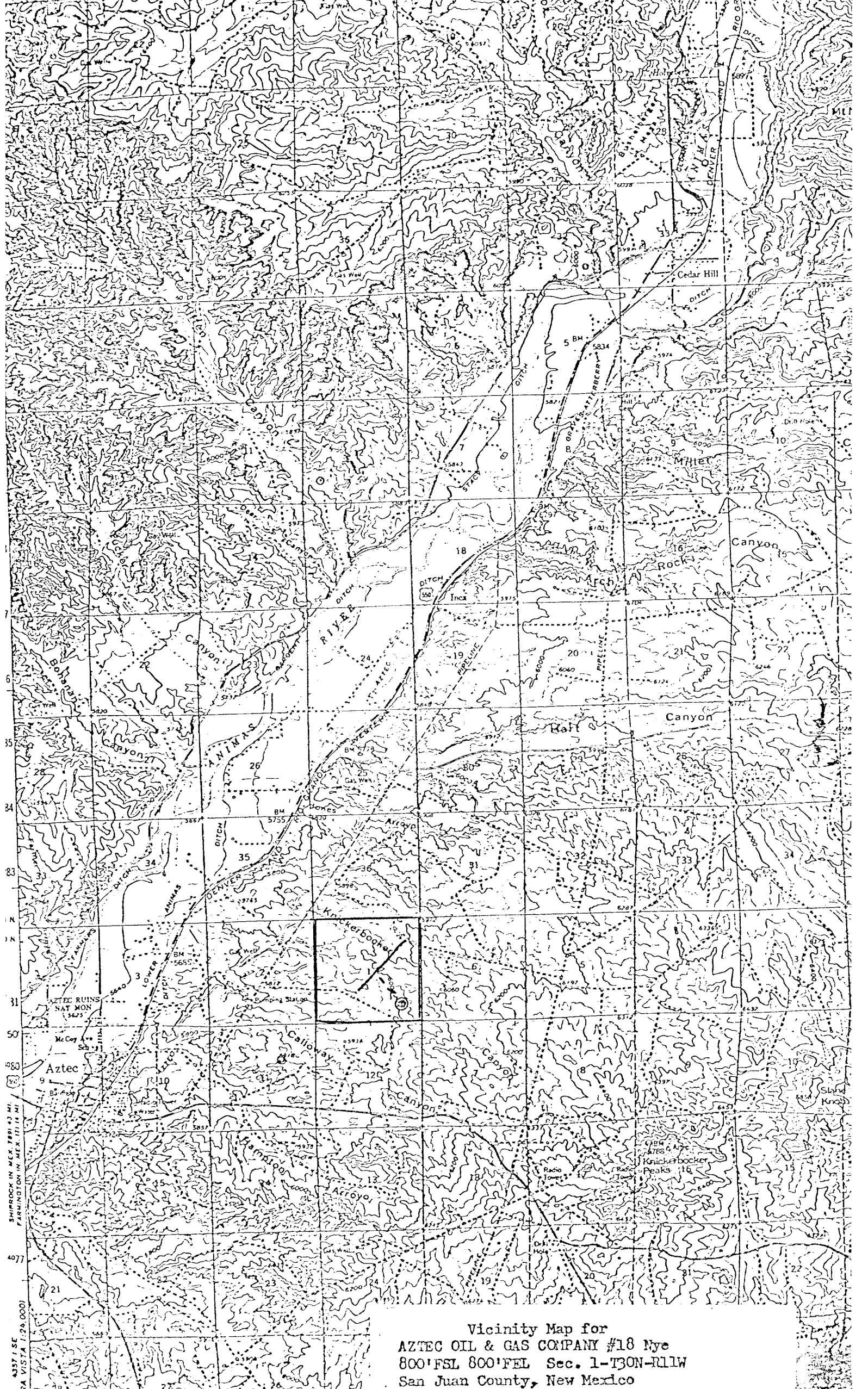
TRAILER
HOUSE

PARKING AREA

CUT REQUIRED FOR ABOVE
LOCATION: 10'



Preventers and spools are to have
through bore of 8" - 3000# PSI or larger.



Vicinity Map for
AZTEC OIL & GAS COMPANY #18 Nye
800'FSL 800'FEL Sec. 1-T30N-R11W
San Juan County, New Mexico