

UNITED STATES  
DEPARTMENT OF THE INTERIOR  
GEOLOGICAL SURVEY

## APPLICATION FOR PERMIT TO DRILL, DEEPEN, OR PLUG BACK

## 1a. TYPE OF WORK

DRILL ☒DEEPEN ☐PLUG BACK ☐

## b. TYPE OF WELL

OIL  
WELL ☐GAS  
WELL ☒

OTHER

SINGLE  
ZONE ☐MULTIPLE  
ZONE ☐

## 2. NAME OF OPERATOR

Dugan Production Corp.

## 3. ADDRESS OF OPERATOR

Box 234, Farmington, NM 87401

## 4. LOCATION OF WELL (Report location clearly and in accordance with any State requirements.)\*

At surface

920' FNL - 970' FEL

At proposed prod. zone

## 14. DISTANCE IN MILES AND DIRECTION FROM NEAREST TOWN OR POST OFFICE\*

7 miles northwest of Farmington, New Mexico

## 15. DISTANCE FROM PROPOSED\*

LOCATION TO NEAREST

PROPERTY OR LEASE LINE, FT.

(Also to nearest drig. unit line, if any)

920'

## 16. NO. OF ACRES IN LEASE

240

## 17. NO. OF ACRES ASSIGNED

TO THIS WELL

N/ 320

## 18. DISTANCE FROM PROPOSED LOCATION\*

TO NEAREST WELL, DRILLING, COMPLETED,  
OR APPLIED FOR, ON THIS LEASE, FT.

None

## 19. PROPOSED DEPTH

6600'

## 20. ROTARY OR CABLE TOOLS

Rotary

## 21. ELEVATIONS (Show whether DF, RT, GR, etc.)

6102' GR

## 22. APPROX. DATE WORK WILL START\*

10-20-77

## 23.

## PROPOSED CASING AND CEMENTING PROGRAM

SIZE OF HOLE	SIZE OF CASING	WEIGHT PER FOOT	SETTING DEPTH	QUANTITY OF CEMENT
12-1/2"	8-5/8"	24#	180'	150 sx
7-7/8"	4-1/2"	10.5#	6600'	800 sx in two stages

Plan to drill with mud to test Dakota Formation. If productive, will set 4-1/2" casing thru Dakota formation, selectively perforate, frac, clean out after frac, run 1-1/4" tubing, and complete well.

Plan to use BOP furnished by rig while drilling (10" 3000 psi hydraulic).

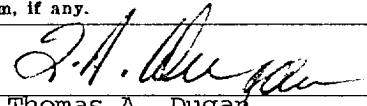
Plan to use BOP rental while completing (6" 3000 psi double gate manual).

NMERB Requirement: Gas is not dedicated.

IN ABOVE SPACE DESCRIBE PROPOSED PROGRAM: If proposal is to deepen or plug back, give data on present productive zone and proposed new productive zone. If proposal is to drill or deepen directionally, give pertinent data on subsurface locations and measured and true vertical depths. Give blowout preventer program, if any.

24.

SIGNED



TITLE

Petroleum Engineer

DATE

10-5-77

(This space for Federal or State office use)

PERMIT NO.

APPROVAL DATE

APPROVED BY

TITLE

DATE

CONDITIONS OF APPROVAL, IF ANY:

OCT 6 1977

\*See Instructions On Reverse Side

**NEW MEXICO OIL CONSERVATION COMMISSION  
WELL LOCATION AND ACREAGE DEDICATION PLAT**

Form C-102  
Supersedes C-128  
Effective 1-1-65

All distances must be from the outer boundaries of the Section.

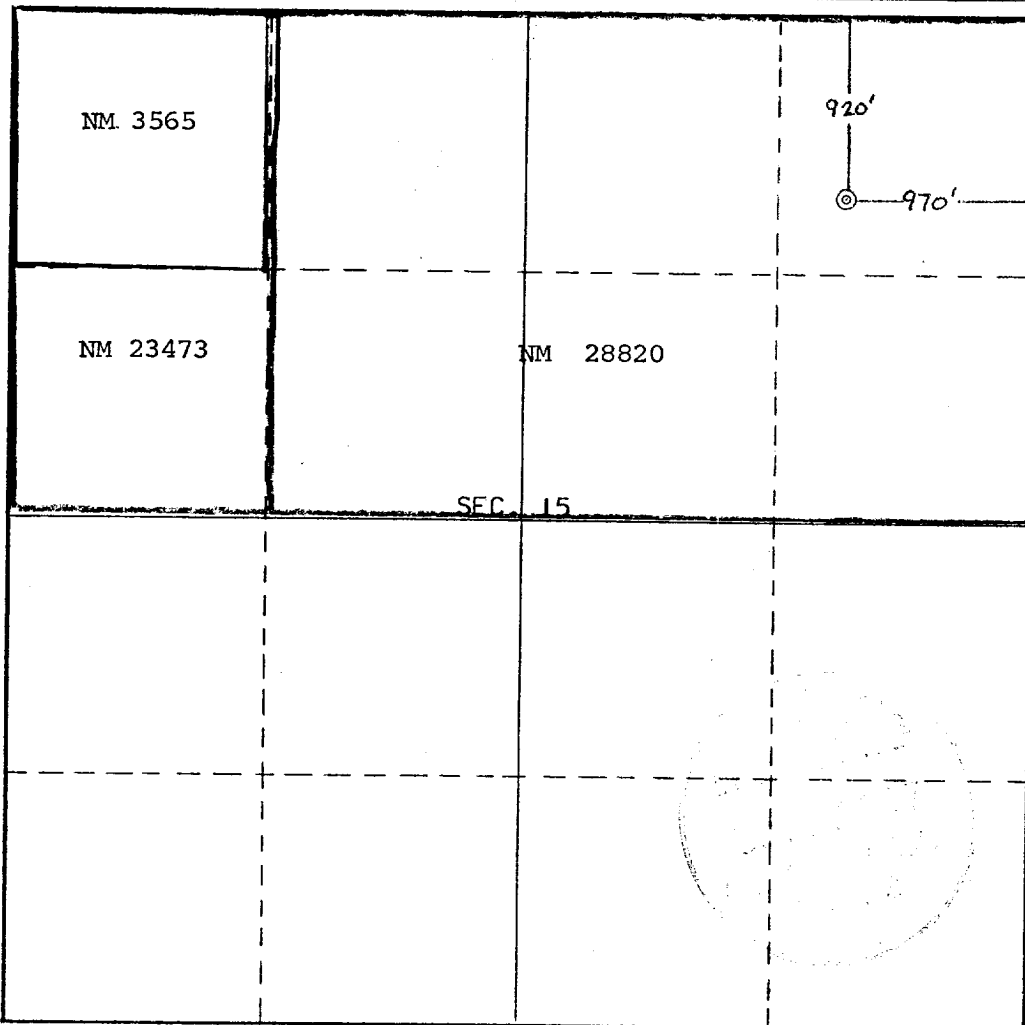
Operator <b>Dugan Production Corporation</b>			Lease <b>Ms Nona</b>		Well No. <b>2</b>
Unit Letter <b>A</b>	Section <b>15</b>	Township <b>30 North</b>	Range <b>14 West</b>	County <b>San Juan</b>	
Actual Footage Location of Well: <b>920</b> feet from the <b>North</b> line and <b>970</b> feet from the <b>East</b> line					
Ground Level Elev. <b>6102</b>	Producing Formation <b>Dakota</b>		Pool <b>Basin</b>		Dedicated Acreage: <b>N/320</b> Acres

1. Outline the acreage dedicated to the subject well by colored pencil or hatchure marks on the plat below.
2. If more than one lease is dedicated to the well, outline each and identify the ownership thereof (both as to working interest and royalty).
3. If more than one lease of different ownership is dedicated to the well, have the interests of all owners been consolidated by communitization, unitization, force-pooling, etc?

☒ Yes    ☐ No    If answer is "yes," type of consolidation Communitization

If answer is "no," list the owners and tract descriptions which have actually been consolidated. (Use reverse side of this form if necessary.) \_\_\_\_\_

No allowable will be assigned to the well until all interests have been consolidated (by communitization, unitization, forced-pooling, or otherwise) or until a non-standard unit, eliminating such interests, has been approved by the Commission.



**CERTIFICATION**

I hereby certify that the information contained herein is true and complete to the best of my knowledge and belief.

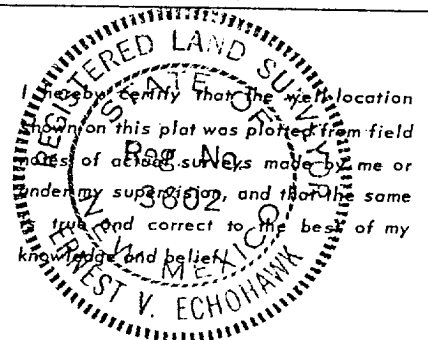
*Thomas A. Dugan*

Name  
**Thomas A. Dugan**

Position  
**President**

Company  
**Dugan Production Corp.**

Date  
**10-5-77**

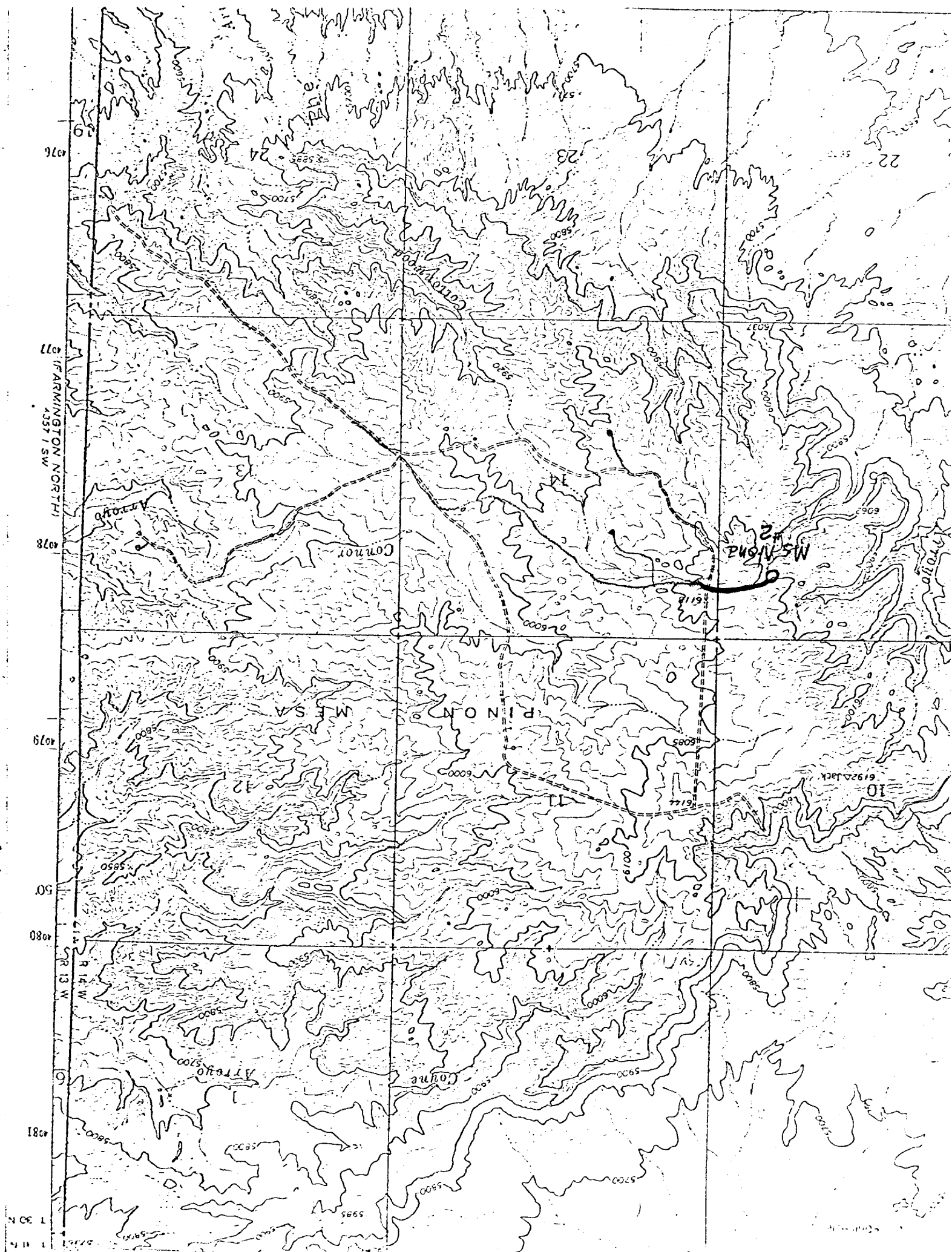


Date Surveyed  
**September 18, 1977**

Registered Professional Engineer and/or Land Surveyor

*E.V. Echohawk*

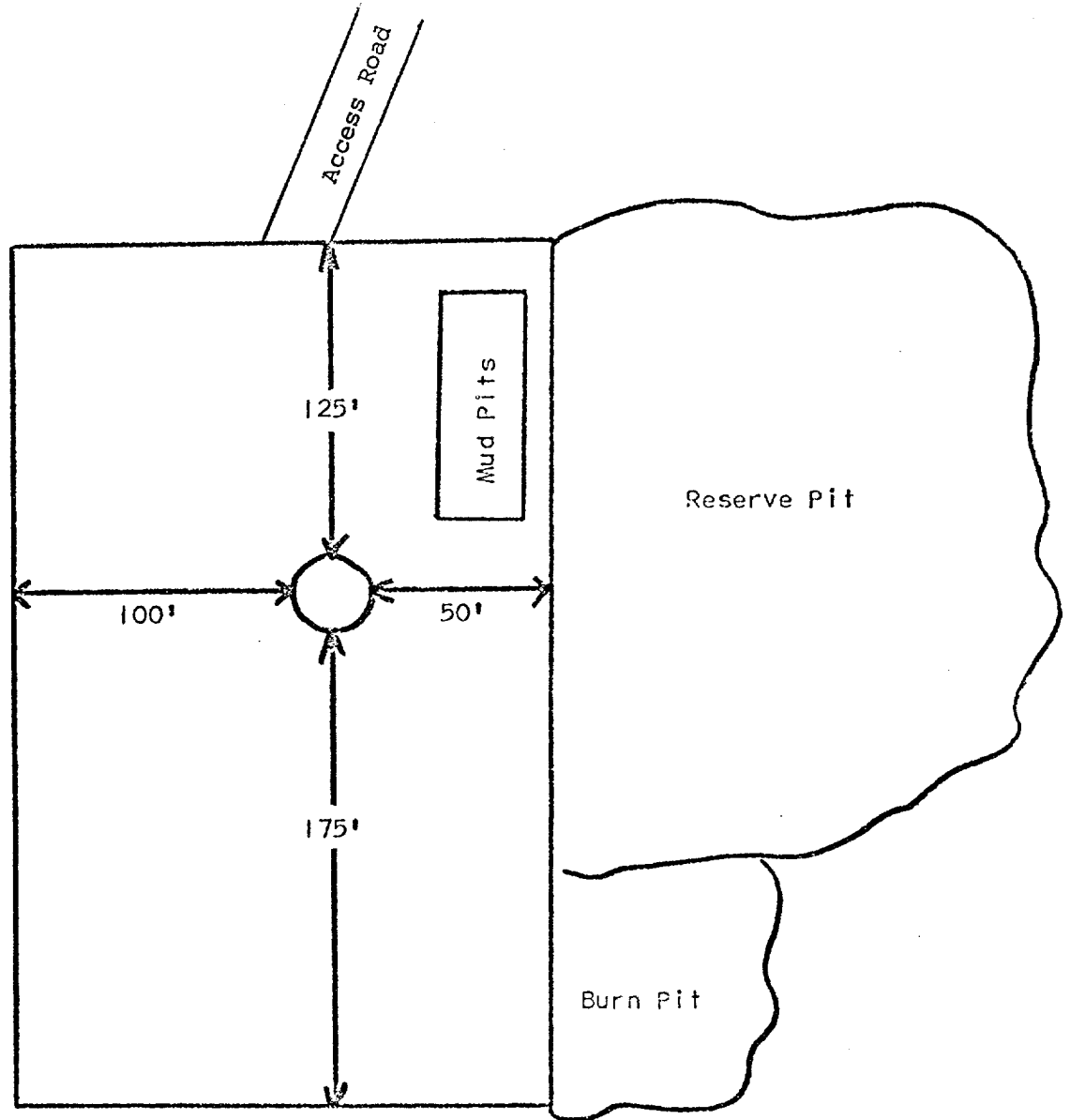
Certificate No. **3602**  
**E.V. Echohawk LS**



Dugan Production Corp.

Ms. Nona #2

Proposed Location Layout



DEVELOPMENT PLAN

Dugan Production Corp.

Ms. Nona 2

1. Existing roads are shown on attached plat.
2. Planned access from existing road approximately 1200' to new location. Will leave natural grass and small vegetation on roadway. Will remove large brush or trees from road. Do not plan to make road grade or bar ditches. Will bottom-out any arroyo we cross and not install culverts.
3. Location of well: 920' FNL - 970' FEL  
Section 15, T30N, R14W  
San Juan County, New Mexico
4. No additional well(s) planned on this lease at this time.
5. Separator and flow line will be located within 50' of wellhead.
6. Water will be secured from San Juan River.
7. Waste materials will be buried on location or in reserve pit.
8. No permanent camp is planned; trailer house will be used on location while drilling.
9. Do not plan to build airstrip.
10. See attached plat for proposed location layout.
11. Will clean up location, fill and level pits, level ruts in road, reseed location and road with Seed Mixture #2 and paint equipment with #34127.  
Pinon Juniper Green
12. Operator's Representative:  
Thomas A. Dugan  
Box 234  
Farmington, New Mexico 87401