

District III  
1000 Rio Brazos Rd. Aztec, NM 87414

State of New Mexico  
Energy, Minerals and Natural Resources Department

SUBMIT 1 COPY TO  
APPROPRIATE  
DISTRICT OFFICE  
AND 1 COPY TO  
SANTA FE OFFICE

FEB 28 1997  
ec. NM 87410

2040 South Pacheco Street  
Santa Fe, New Mexico 87505

## PIT REMEDIATION AND CLOSURE REPORT

RECEIVED  
OCT 31 1996

CHL. COM. DIV.  
DIST. 3

Operator: PNM Gas Services ( SRC ) Telephone: 324-3764

Address: 603 W. Elm Street Farmington, NM 87401

Facility or Well Name: Nye #16A

Location: Unit: C Sec. 12 T. 30 N R. 11 W County San Juan

Pit Type: Separator ☐ Dehydrator ☒ Other ☐

Land Type: BLM ☒ State ☐ Fee ☐ Other ☐

**Pit Location:** Pit dimensions: length 20 width 20 depth 3

(Attach diagram) Reference: wellhead ☒ other \_\_\_\_\_

Footage from reference: 125'

Direction from reference: 75 Degrees ☒ East North ☒  
of  
☐ West South ☐

<b>Depth to Ground Water:</b>	Less than 50 feet	(20 points)	
	50 feet to 99 feet	(10 points)	
(Vertical distance from contaminants to seasonal high water elevation of ground water)	Greater than 100 feet	( 0 points)	<u>0</u>

<b>Wellhead Protection Area:</b>			
	Yes	(20 points)	
(Less than 200 feet from a private domestic water source, or; less than 1,000 feet from all other water sources)	No	( 0 points)	<u>0</u>

(Horizontal distance to perennial lakes, ponds, rivers, streams, creeks, irrigation canals and ditches)	Less than 200 feet	(20 points)	<u>0</u>
	200 feet to 1,000 feet	(10 points)	
	Greater than 1,000 feet	( 0 points)	

**RANKING SCORE (TOTAL POINTS) :** 0

Date Remediation Started: 6/6/96 Date Completed: 6/7/96

Remediation Method: Excavation X Approx. Cubic Yard 211

(check all appropriate sections)

Landfarmed X Amount Landfarmed (cubic yds) 191

Other \_\_\_\_\_

Remediation Location: Onsite X Offsite \_\_\_\_\_

(i.e., landfarmed onsite, name and location of offsite facility)

Backfill Material Location: \_\_\_\_\_

**General Description of Remedial Action:**

Excavated contaminated soil to a pit size of 19'x15'x20' and landfarmed soil onsite within a bermed area at a depth of 6" to 12". Soil was aerated by plowing/disking until soil met regulatory levels.

Ground Water Encountered: No ✓ Yes \_\_\_\_\_ Depth \_\_\_\_\_

**Final Pit Closure Sampling:**

Sample Location 5 pt composite-4 side walls and center of pit bottom

(if multiple samples, attach sample result and diagram of sample locations and depths.)

Sample depth 20'

Sample date 6/6/96 Sample time 2:15:00 PM

**Sample Results**

Benzene (ppm) 0.0930

Total BTEX (ppm) 7.9449

Field headspace (ppm) \_\_\_\_\_

TPH < 5.00 Method 8015A

Vertical Extent (ft) \_\_\_\_\_ Risk Assessment form attached Yes ✓ No \_\_\_\_\_

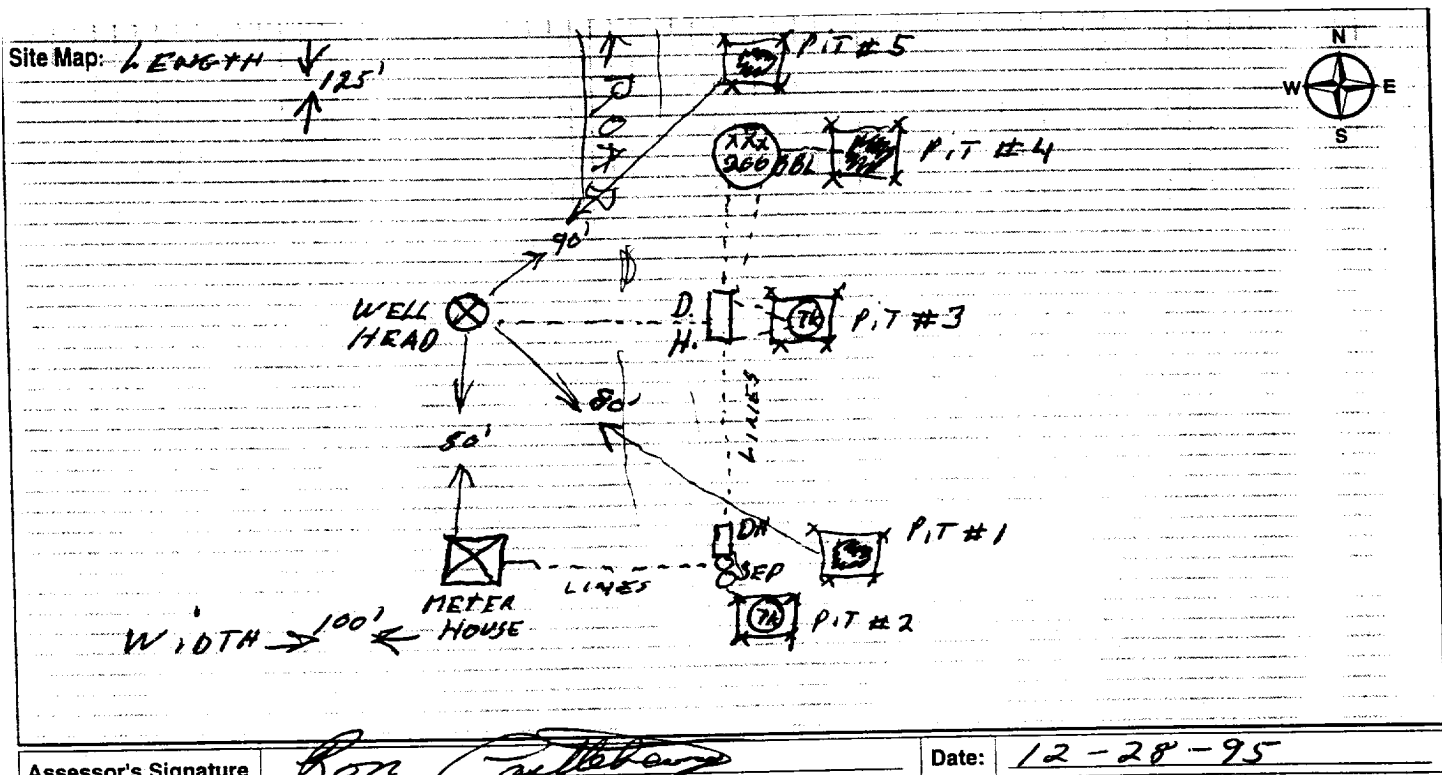
Ground Water Sample: Yes \_\_\_\_\_ No ✓ (If yes, attach sample results)

I HEREBY CERTIFY THAT THE INFORMATION ABOVE IS TRUE AND COMPLETE TO THE BEST OF MY KNOWLEDGE AND MY BELIEF

DATE October 25, 1996

SIGNATURE Maureen Gannon

PRINTED NAME Maureen Gannon  
AND TITLE Environmental Engineer



Assessor's Signature	<i>Ron Carter</i>	Date:	12-28-95
----------------------	-------------------	-------	----------



OFF: (505) 325-8786

LAB: (505) 325-5667

***Diesel Range Organics***

Attn: *Denver Bearden*  
Company: *PNM Gas Services*  
Address: *603 W. Elm*  
City, State: *Farmington, NM 87401*

Date: *8-Jun-96*  
COC No.: *4695*  
Sample No. *11111*  
Job No. *2-1000*

Project Name: *PNM Gas Services - Nye #16 A*  
Project Location: *9606061415; 5pt. Composite, 4 Walls & Bottom, 20'*  
Sampled by: *GC* Date: *6-Jun-96* Time: *14:15*  
Analyzed by: *HR* Date: *7-Jun-96*  
Sample Matrix: *Soil*

***Laboratory Analysis***

<i>Parameter</i>	<i>Result</i>	<i>Unit of Measure</i>	<i>Detection Limit</i>	<i>Unit of Measure</i>
<i>Diesel Range Organics (C10 - C28)</i>	<i>&lt;5.0</i>	<i>mg/kg</i>	<i>5.0</i>	<i>mg/kg</i>

***Quality Assurance Report***

DRO QC No.: *0475-QC*

***Calibration Check***

<i>Parameter</i>	<i>Method Blank</i>	<i>Unit of Measure</i>	<i>True Value</i>	<i>Analyzed Value</i>	<i>% Diff</i>	<i>Limit</i>
<i>Diesel Range (C10 - C28)</i>	<i>&lt;5.0</i>	<i>ppm</i>	<i>1,765</i>	<i>1,897</i>	<i>7.5</i>	<i>15%</i>

***Matrix Spike***

<i>Parameter</i>	<i>1- Percent Recovered</i>	<i>2 - Percent Recovered</i>	<i>Limit</i>	<i>%RSD</i>	<i>Limit</i>
<i>Diesel Range (C10-C28)</i>	<i>106</i>	<i>105</i>	<i>(70-130)</i>	<i>1</i>	<i>20%</i>

***Method - SW-846 EPA Method 8015A mod. - Nonhalogenated Volatile Hydrocarbons by Gas Chromatography***

Approved by: *[Signature]*  
Date: *6/8/96*

P. O. BOX 2606 • FARMINGTON, NM 87499

— TECHNOLOGY BLENDING INDUSTRY WITH THE ENVIRONMENT —

OFF: (505) 325-8786



LAB: (505) 325-5667

### AROMATIC VOLATILE ORGANICS

Attn: *Denver Bearden*  
Company: *PNM Gas Services*  
Address: *603 W. Elm*  
City, State: *Farmington, NM 87401*

Date: *8-Jun-96*  
COC No.: *4695*  
Sample No. *11111*  
Job No. *2-1000*

Project Name: *PNM Gas Services - NYE #16A*  
Project Location: *9606061415; 5pt. Composite, 4 Walls & Bottom, 20'*  
Sampled by: *GC* Date: *6-Jun-96* Time: *14:15*  
Analyzed by: *DC* Date: *7-Jun-96*  
Sample Matrix: *Soil*

#### Aromatic Volatile Organics

Component	Result	Units of Measure	Detection Limit	Units of Measure
Benzene	93.0	ug/kg	0.2	ug/kg
Toluene	3013.7	ug/kg	0.2	ug/kg
Ethylbenzene	516.9	ug/kg	0.2	ug/kg
m,p-Xylene	3772.2	ug/kg	0.2	ug/kg
o-Xylene	549.1	ug/kg	0.2	ug/kg
TOTAL		7944.9	ug/kg	

**Method** - SW-846 EPA Method 8020 Aromatic Volatile Organics by Gas Chromatography

Approved by: *[Signature]*  
Date: *6/8/96*

P. O. BOX 2606 • FARMINGTON, NM 87499

— TECHNOLOGY BLENDING INDUSTRY WITH THE ENVIRONMENT —

NYE #16 A  
Meridian  
Sec. 12-30N-11W

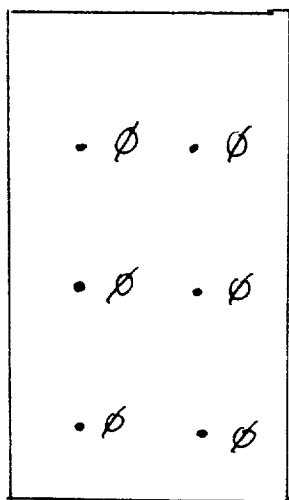
July 24, 1996

Land Farm: On Location  
191 Yards

Composite Sample #: 9607241220

Soil Vapor Head-Space Reading = 3.6 ppm (PID)

Sample depths between 2" and 12"



OFF: (505) 325-5667



LAB: (505) 325-1556

***Diesel Range Organics***

Attn: *Denver Bearden*  
Company: *PNM Gas Services*  
Address: *603 W. Elm*  
City, State: *Farmington, NM 87401*

Date: *25-Jul-96*  
COC No.: *4922*  
Sample No. *11588*  
Job No. *2-1000*

Project Name: ***PNM Gas Services - Nye #16A Landfarm***  
Project Location: ***9607241220; 6pt. Composite, 2"-12" depth***  
Sampled by: GC Date: *24-Jul-96* Time: *12:20*  
Analyzed by: HR Date: *25-Jul-96*  
Sample Matrix: *Soil*

***Laboratory Analysis***

<i>Parameter</i>	<i>Result</i>	<i>Unit of Measure</i>	<i>Detection Limit</i>	<i>Unit of Measure</i>
<i>Diesel Range Organics (C10 - C28)</i>	<i>&lt;5.0</i>	<i>mg/kg</i>	<i>5.0</i>	<i>mg/kg</i>

***Quality Assurance Report***

DRO QC No.: *0479-QC*

***Calibration Check***

<i>Parameter</i>	<i>Method Blank</i>	<i>Unit of Measure</i>	<i>True Value</i>	<i>Analyzed Value</i>	<i>% Diff</i>	<i>Limit</i>
<i>Diesel Range (C10 - C28)</i>	<i>&lt;5.0</i>	<i>ppm</i>	<i>2,000</i>	<i>1,931</i>	<i>3.4</i>	<i>15%</i>

***Matrix Spike***

<i>Parameter</i>	<i>1 - Percent Recovered</i>	<i>2 - Percent Recovered</i>	<i>Limit</i>	<i>%RSD</i>	<i>Limit</i>
<i>Diesel Range (C10-C28)</i>	<i>111</i>	<i>121</i>	<i>(70-130)</i>	<i>6</i>	<i>20%</i>

**Method** - SW-846 EPA Method 8015A mod. - Nonhalogenated Volatile Hydrocarbons by Gas Chromatography

Approved by: *[Signature]*  
Date: *7/26/96*

P.O. BOX 2606 • FARMINGTON, NM 87499

- TECHNOLOGY BLENDING INDUSTRY WITH THE ENVIRONMENT -