

Operator: PNM Gas Services (SRC)		Telephone: 324-3764	
Address: 603 W. Elm Street Farmington, NM 87401			
Facility or Well Name: Nye #1A			
Location:	Unit: O	Sec. 12	T. 30 N R. 11 W County San Juan
Pit Type:	Separator	Dehydrator	Other
Land Type:	BLM	State	Fee Other
Pit Location:	Pit dimensions:	length 20	width 20 depth 4
(Attach diagram)	Reference:	wellhead	other
	Footage from reference:	110'	
	Direction from reference:	5 Degrees	East North
		West	South
Depth to Ground Water:	Less than 50 feet	(20 points)	
	50 feet to 99 feet	(10 points)	
	Greater than 100 feet	(0 points)	0
(Vertical distance from contaminants to seasonal high water elevation of ground water)			
Wellhead Protection Area:	Yes	(20 points)	
	No	(0 points)	0
(Less than 200 feet from a private domestic water source, or; less than 1,000 feet from all other water sources)			
Distance to Surface Water:	Less than 200 feet	(20 points)	
	200 feet to 1,000 feet	(10 points)	
	Greater than 1,000 feet	(0 points)	0
(Horizontal distance to perennial lakes, ponds, rivers, streams, creeks, irrigation canals and ditches)			
RANKING SCORE (TOTAL POINTS) :			0

Date Remediation Started: 4/17/96 Date Completed: 4/18/96

Remediation Method: Excavation X Approx. Cubic Yard 440

(Check all appropriate sections)

Landfarmed X Amount Landfarmed (cubic yds) 400

Other _____

Remediation Location: Onsite X (200 yds) Offsite Nye #7 12-30N-11W (200 yds)

(i.e., landfarmed onsite, name and location of offsite facility)

Backfill Material Location: _____

General Description of Remedial Action:

Excavated contaminated soil to pit size of 33'x20'x18' and landfarmed soil onsite and offsite within a bermed area at a depth of 6" to 12". Soil was aerated by plowing/disking until soil meets regulatory levels.

Ground Water Encountered: No ☒ Yes ☐ Depth _____

Final Pit Closure Sampling:

Sample Location 5 pt. Composite-4 Side walls and center of pit bottom

(if multiple samples, attach sample result and diagram of sample locations and depths.)

Sample depth 18'

Sample date 4/18/96 Sample time 3:30:00 PM

Sample Results

Benzene (ppm) 0.0083

Total BTEX (ppm) 0.5127

Field headspace (ppm) _____

TPH < 5.00 Method 8015A

Vertical Extent (ft) _____ Risk Assessment form attached Yes ☐ No ☒

Ground Water Sample: Yes ☐ No ☒ (If yes, attach sample results)

I HEREBY CERTIFY THAT THE INFORMATION ABOVE IS TRUE AND COMPLETE TO THE BEST OF MY KNOWLEDGE AND MY BELIEF

DATE October 25, 1996

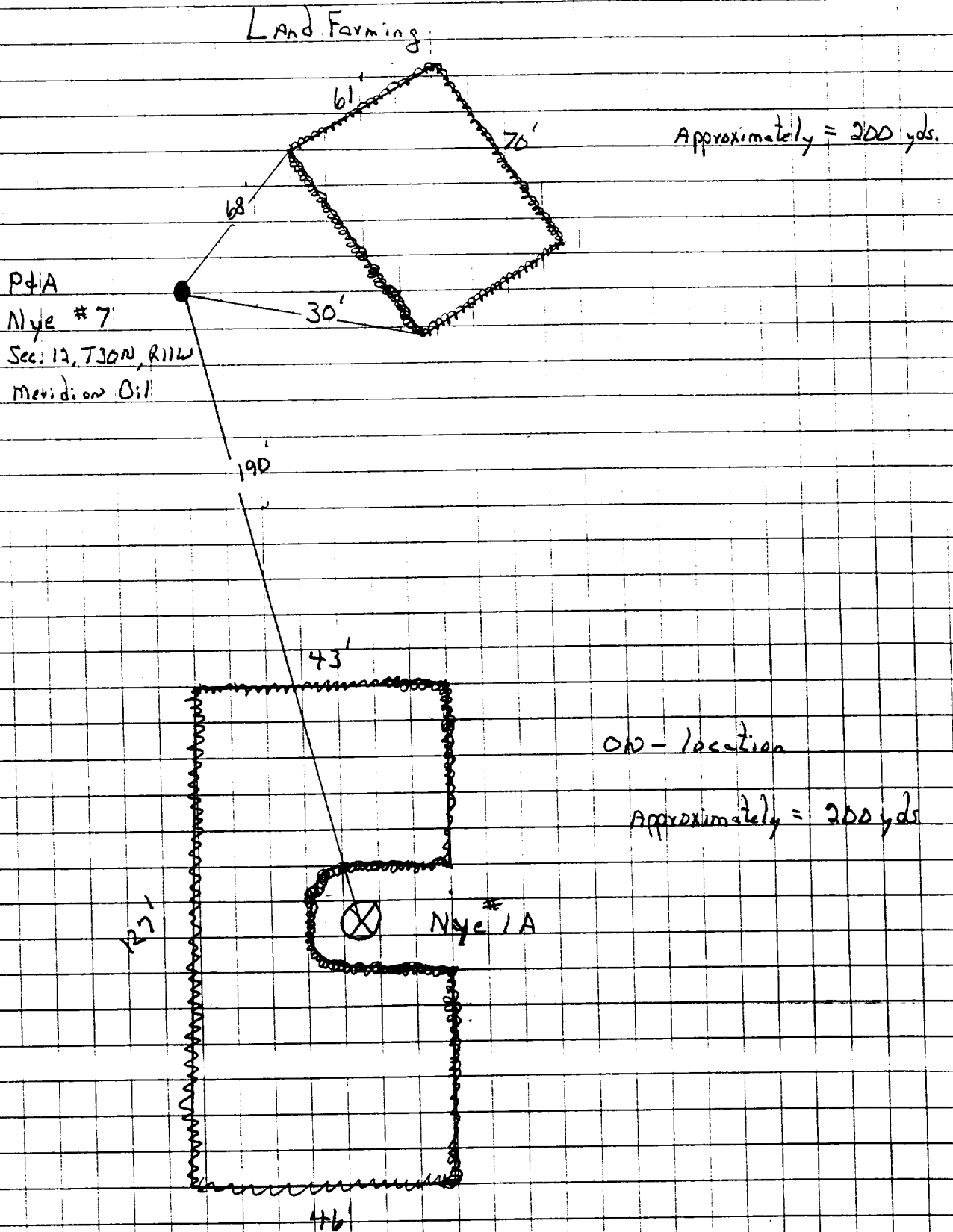
SIGNATURE Maureen Gannon

PRINTED NAME Maureen Gannon

AND TITLE Environmental Engineer

Nye #1A

4-17-96



Nye # 1A

4-17-96

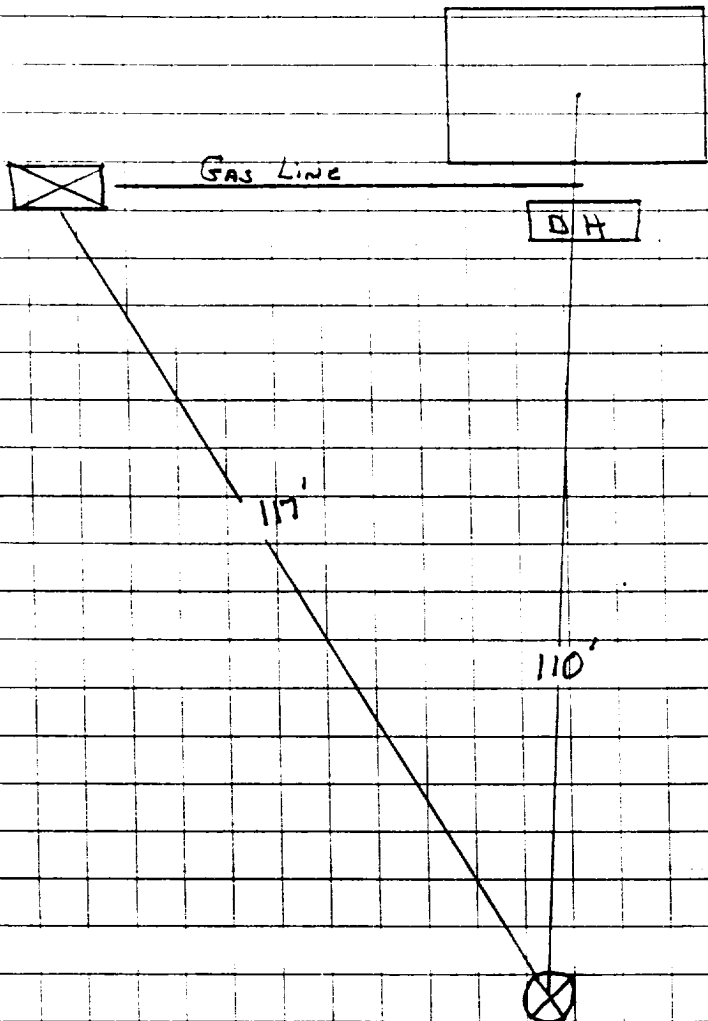
Meridian Oil

Sec. 12, T30N, R11W

820' FSL + 1550 FEL

Run #: 10-42

5° East of North



Pit Remediation = $33' \times 20' \times 18' = 440$
overburden = 40,
Spool = 400

OFF: (505) 325-8786



LAB: (505) 325-5667

TOTAL PETROLEUM HYDROCARBONS

Attn: *Denver Bearden*
 Company: *PNM Gas Services*
 Address: *603 W. Elm*
 City, State: *Farmington, NM 87401*

Date: *18-Apr-96*
 COC No.: *4610*
 Sample No. *10662*
 Job No. *2-1000*

Project Name: *PNM Gas Services - Nye 1-A*
 Project Location: *9604171530; 5pt. Composite, 4 Walls & Bottom @ 18'*
 Sampled by: *GC* Date: *17-Apr-96* Time: *15:30*
 Analyzed by: *DC* Date: *18-Apr-96*
 Sample Matrix: *Soil*

Laboratory Analysis

Analyte	Result	Units of Measure	Detection Limit	Units of Measure
Gasoline Range (C5 - C9)	<5.0	mg/kg	5.0	mg/kg
Diesel Range (C10 - C28)	<5.0	mg/kg	5.0	mg/kg
	TOTAL	<5.0		mg/kg

Quality Assurance Report

GRO QC No.: *0447-STD*
 DRO QC No.: *0446-STD*

Calibration Check

Analyte	Method Blank	Units of Measure	True Value	Analyzed Value	% Diff	Limit
Gasoline Range (C5 - C9)	<50	ppb	1,350	1,317	2.5	15%
Diesel Range (C10 - C28)	<5	ppm	2,000	2,019	0.9	15%

Matrix Spike

Analyte	1- Percent Recovered	2 - Percent Recovered	Limit	%RSD	Limit
Gasoline Range (C5-C9)	102	97	(70-130)	3	20%
Diesel Range (C10-C28)	101	101	(70-130)	0	20%

Method - SW-846 EPA Method 8015A mod. - Nonhalogenated Volatile Hydrocarbons by Gas Chromatography

Approved by: *DeG*Date: *4/18/96*

P. O. BOX 2606 • FARMINGTON, NM 87499

- TECHNOLOGY BLENDING INDUSTRY WITH THE ENVIRONMENT -

OFF: (505) 325-8786



LAB: (505) 325-5667

AROMATIC VOLATILE ORGANICS

Attn: *Denver Bearden*
Company: *PNM Gas Services*
Address: *603 W. Elm*
City, State: *Farmington, NM 87401*

Date: *18-Apr-96*
COC No.: *4610*
Sample No.: *10662*
Job No.: *2-1000*

Project Name: *PNM Gas Services - Nye 1-A*
Project Location: *9604171530; 5pt. Composite, 4 Walls & Bottom @ 18'*
Sampled by: *GC* Date: *17-Apr-96* Time: *15:30*
Analyzed by: *DC* Date: *18-Apr-96*
Type of Sample: *Soil*

Aromatic Volatile Organics

Component	Result	Units of Measure	Detection Limit	Units of Measure
<i>Benzene</i>	<i>8.3</i>	<i>ug/kg</i>	<i>0.2</i>	<i>ug/kg</i>
<i>Toluene</i>	<i>68.1</i>	<i>ug/kg</i>	<i>0.2</i>	<i>ug/kg</i>
<i>Ethylbenzene</i>	<i>26.8</i>	<i>ug/kg</i>	<i>0.2</i>	<i>ug/kg</i>
<i>m,p-Xylene</i>	<i>344.1</i>	<i>ug/kg</i>	<i>0.2</i>	<i>ug/kg</i>
<i>o-Xylene</i>	<i>65.3</i>	<i>ug/kg</i>	<i>0.2</i>	<i>ug/kg</i>
<i>TOTAL</i>		<i>512.7</i>		<i>ug/kg</i>

Method - *SW-846 EPA Method 8020 Aromatic Volatile Organics by Gas Chromatography*

Approved by: *[Signature]*
Date: *4/18/96*

P. O. BOX 2606 • FARMINGTON, NM 87499

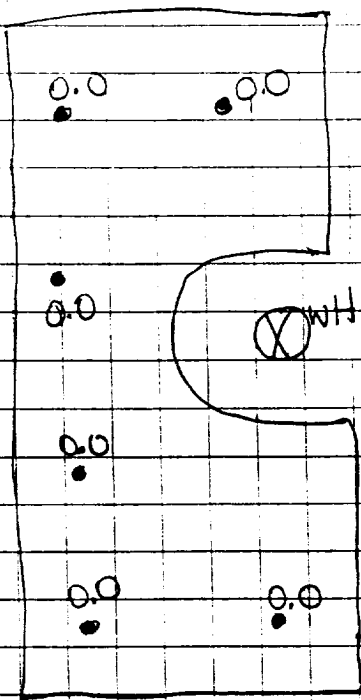
- TECHNOLOGY BLENDING INDUSTRY WITH THE ENVIRONMENT -

Nye #1A Landfarm

7-2-96

Composite Sample : 960702.1330

Soil Vapor Reading 13.1



ON SITE

OFF: (505) 325-5667

TECHNOLOGIES, LTD.

LAB: (505) 325-1556

Diesel Range Organics

Attn: *Denver Bearden*
Company: *PNM Gas Services*
Address: *603 W. Elm*
City, State: *Farmington, NM 87401*

Date: *10-Jul-96*
COC No.: *4905*
Sample No. *11401*
Job No. *2-1000*

Project Name: *PNM Gas Services - Nye #1A Landfarm*
Project Location: *9607021330; 6pt. Composite, 2"-12" deep*
Sampled by: *GC* Date: *2-Jul-96* Time: *13:30*
Analyzed by: *DC* Date: *10-Jul-96*
Sample Matrix: *Soil*

Laboratory Analysis

Parameter	Result	Unit of Measure	Detection Limit	Unit of Measure
<i>Diesel Range Organics (C10 - C28)</i>	<i><5.0</i>	<i>mg/kg</i>	<i>5.0</i>	<i>mg/kg</i>

Quality Assurance Report

DRO QC No.: *0475-QC*

Calibration Check

Parameter	Method Blank	Unit of Measure	True Value	Analyzed Value	% Diff	Limit
<i>Diesel Range (C10 - C28)</i>	<i><5.0</i>	<i>ppm</i>	<i>2,000</i>	<i>2,048</i>	<i>2.4</i>	<i>15%</i>

Matrix Spike

Parameter	1 - Percent Recovered	2 - Percent Recovered	Limit	%RSD	Limit
<i>Diesel Range (C10-C28)</i>	<i>114</i>	<i>104</i>	<i>(70-130)</i>	<i>7</i>	<i>20%</i>

Method - SW-846 EPA Method 8015A mod. - Nonhalogenated Volatile Hydrocarbons by Gas Chromatography

Approved by: *[Signature]*

Date: *2/10/96*

P.O. BOX 2606 • FARMINGTON, NM 87499

TECHNOLOGY BLENDING INDUSTRY WITH THE ENVIRONMENT

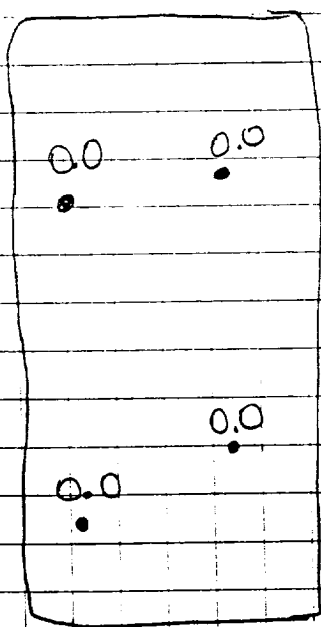
Site #7 Nye #1A Landfarm

Composite Sample # 9607021335

7-2-96

Vapor Readings 15.4

P&A
Charter



Sample Depth: 2" - 12" deep

ON SITE

TECHNOLOGIES, LTD.

OFF: (505) 325-5667

LAB: (505) 325-1556

Diesel Range Organics

Attn: *Denver Bearden*
Company: *PNM Gas Services*
Address: *603 W. Elm*
City, State: *Farmington, NM 87401*

Date: *10-Jul-96*
COC No.: *4899*
Sample No. *11395*
Job No. *2-1000*

Project Name: *PNM Gas Services - Nye #7 Landfarm*
Project Location: *9607021335; 6pt. Composite, 2"-12" deep*
Sampled by: *GC* Date: *2-Jul-96* Time: *13:35*
Analyzed by: *DC* Date: *9-Jul-96*
Sample Matrix: *Soil*

Laboratory Analysis

Parameter	Result	Unit of Measure	Detection Limit	Unit of Measure
Diesel Range Organics (C10 - C28)	<5.0	mg/kg	5.0	mg/kg

Quality Assurance Report

DRO QC No.: *0475-QC*

Calibration Check

Parameter	Method Blank	Unit of Measure	True Value	Analyzed Value	% Diff	Limit
Diesel Range (C10 - C28)	<5.0	ppm	2,000	1,960	2.0	15%

Matrix Spike

Parameter	1- Percent Recovered	2 - Percent Recovered	Limit	%RSD	Limit
Diesel Range (C10-C28)	117	112	(70-130)	3	20%

Method - SW-846 EPA Method 8015A mod. - Nonhalogenated Volatile Hydrocarbons by Gas Chromatography

Approved by: *[Signature]*

Date: *7/10/96*

P.O. BOX 2606 • FARMINGTON, NM 87499

TECHNOLOGY BLENDING INDUSTRY WITH THE ENVIRONMENT -