

UNITED STATES
DEPARTMENT OF THE INTERIOR
GEOLOGICAL SURVEY

reverse side)

30-095-22892

5. LEASE DENIMINATION AND SERIAL NO.

007511-A SF 080003

6. IF INDIAN, ALLOTTEE OR TRIBE NAME

7. UNIT AGREEMENT NAME

8. FARM OR LEASE NAME

Florance

9. WELL NO

3B

10. FIELD AND POOL OR WILDCAT

Blanco Mesa Verde

11. SEC., T., R., M., OR BLM.
AND SURVEY OR AREA

Sec. 22, T30N, R9W

12. COUNTY OR PARISH

San Juan

13. STATE

New Mexico

APPLICATION FOR PERMIT TO DRILL, DEEPEN, OR PLUG BACK

1a. TYPE OF WORK

DRILL ☒

DEEPEN ☐

PLUG BACK ☐

b. TYPE OF WELL

OIL
WELL ☐

GAS
WELL ☒

OTHER

SINGLE
ZONE ☐

MULTIPLE
ZONE ☐

2. NAME OF OPERATOR

TEENNECO OIL COMPANY

3. ADDRESS OF OPERATOR

720 South Colorado Blvd., Penthouse, Denver, Colorado 80222

4. LOCATION OF WELL (Report location clearly and in accordance with any State requirements.)

At surface

At proposed prod. zone

1460' FSL and 840 FEL
Unit I

14. DISTANCE IN MILES AND DIRECTION FROM NEAREST TOWN OR POST OFFICE*

See Point 1:B of Surface Use Plan

15. DISTANCE FROM PROPOSED*

LOCATION TO NEAREST
PROPERTY OR LEASE LINE, FT.
(Also to nearest drlg. unit line, if any)

16. NO. OF ACRES IN LEASE

320

17. NO. OF ACRES ASSIGNED
TO THIS WELL

s/ 320

18. DISTANCE FROM PROPOSED LOCATION*
TO NEAREST WELL, DRILLING, COMPLETED,
OR APPLIED FOR, ON THIS LEASE, FT.

19. PROPOSED DEPTH

+ 5250'

20. ROTARY OR CABLE TOOLS

Rotary

21. ELEVATIONS (Show whether DF, RT, GR, etc.)

6080' GL

22. APPROX. DATE WORK WILL START*

March 19, 1978

23.

PROPOSED CASING AND CEMENTING PROGRAM

SIZE OF HOLE	SIZE OF CASING	WEIGHT PER FOOT	SETTING DEPTH	QUANTITY OF CEMENT
12-1/4"	9-5/8"	36#	+ 200	Suff. to circulate to surface.
8-3/4"	7"	23#	+ 3065	Suff. to cement to surface csg.
6-1/8"	4-1/2"	10.5#	+ 5250	Suff. to cement to 7" csg.

1- The geologic name of this surface formation is (~~San Jose Escobedo~~ Nacimiento)

2&3 Formation Tops (Estimated)

Pictured Cliffs	+	2770	Possible oil or gas producer
Cliff House	+	4405	Possible oil or gas producer
Menefee	+	4595	Possible oil or gas producer
Point Lookout	+	4895	Possible oil or gas producer
Mancos Shale	+	5135	

4- Run 9-5/8" OD, K-55 new casing to +200' and circulate cement to surface. Run 7" OD, 23#, K-55 new casing to + 3065' and circulate cement up through the 9-5/8" csg. Run a 4 1/2" csg. Liner from 150' above bottom of 7" csg. to T.D. and circulate cement back to the top of 4 1/2" csg. Casinghead will be a 10" 900 series w/a 3000 psi. rating.

5- Blowout preventors: Hydraulic, double ram, 10". One set of rams will be provided for each size drill pipe in the hole. One set of blind rams at all times. Fill line will be 2", kill line will be 2", choke relief line will be 2" with variable choke.

6- We will use; spud mud from 0-+200'; Gel Chemical w/low solids as needed to maintain good hole conditions from +200'-+3065'; Compressed gas from +3065' to T.D..

7- Auxiliary Equipment

- Kelly cock will be in use at all times.
- Stabbing valve to fit drill pipe will be present on floor at all times.
- Mud monitoring will be visual, no abnormal pressures are anticipated in this area.
- Rotating head will be used when drilling with gas.

8- An AOF test will be taken at the completion of this well. No cores will be taken. Gamma Ray and Compensated Density logs will be run. Any other evaluation that may be necessary during the drilling of this well will be conducted as needed.

9- No abnormal pressures or temperatures are anticipated. See point #5 for blowout prevention equipment.

10- The drilling of this well will take approximately eight days. The gas is contracted to Southern Union Gathering Co.

IN ABOVE SPACE DESCRIBE PROPOSED PROGRAM: If proposal is to deepen or plug back, give data on present productive zone and proposed new productive zone. If proposal is to drill or deepen directionally, give pertinent data on subsurface locations and measured and true vertical depths. Give blowout preventer program, if any.

24.

SIGNED

D.A. Myers

TITLE Div. Production Manager

DATE

1-11-78

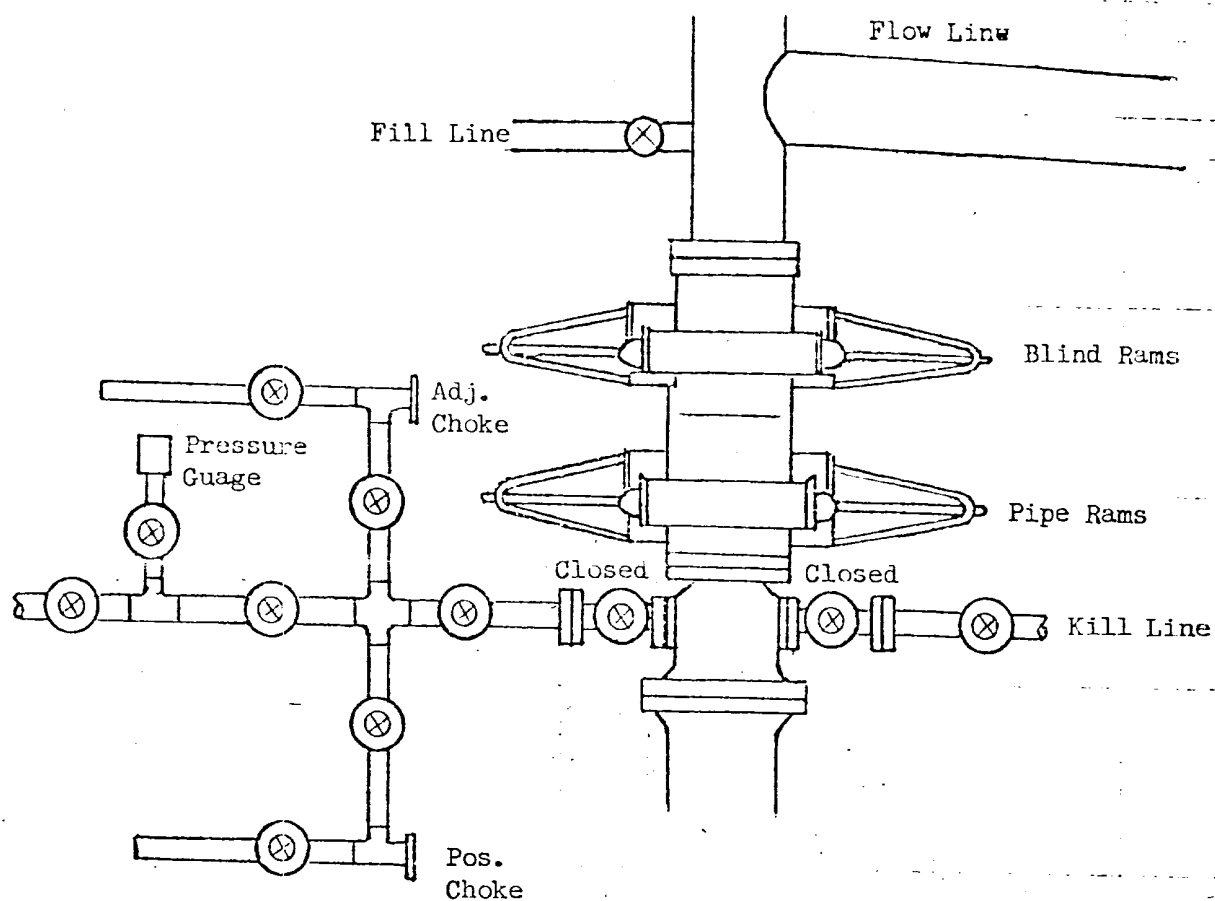
(This space for Federal or State office use)

APPROVED BY

APPROVAL DATE

NEW MEXICO OIL CONSERVATION COM.
1000 RIO BRAZOS RD.

DATE



All valves 2"

All BOPs, flanges, spools, valves, & lines must be series 900 or 3000 psi working press.

Choke manifold must be at ground level and extended out from under substructure.

TENNECO OIL COMPANY

REQUIRED MINIMUM BLOWOUT PREVENTOR

HOOKUP

Denver, Colorado

NEW MEXICO OIL CONSERVATION COMMISSION
WELL LOCATION AND ACREAGE DEDICATION PLAT

Form C-112
Supersedes C-128
Effective 1-1-65

All distances must be from the outer boundaries of the Section.

Operator Tenneco Oil Company			Lease Florence		Well No. 3B
Unit Letter I	Section 22	Township 30N	Range 9W	County San Juan	
Actual Well Location of Well: 1460 feet from the South line and 840 feet from the East line					
Ground Level Elev. 6080	Producing Formation Blanco Mesa Verde		Pool Blanco Mesa Verde		Dedicated Acreage: 320.00 Acres

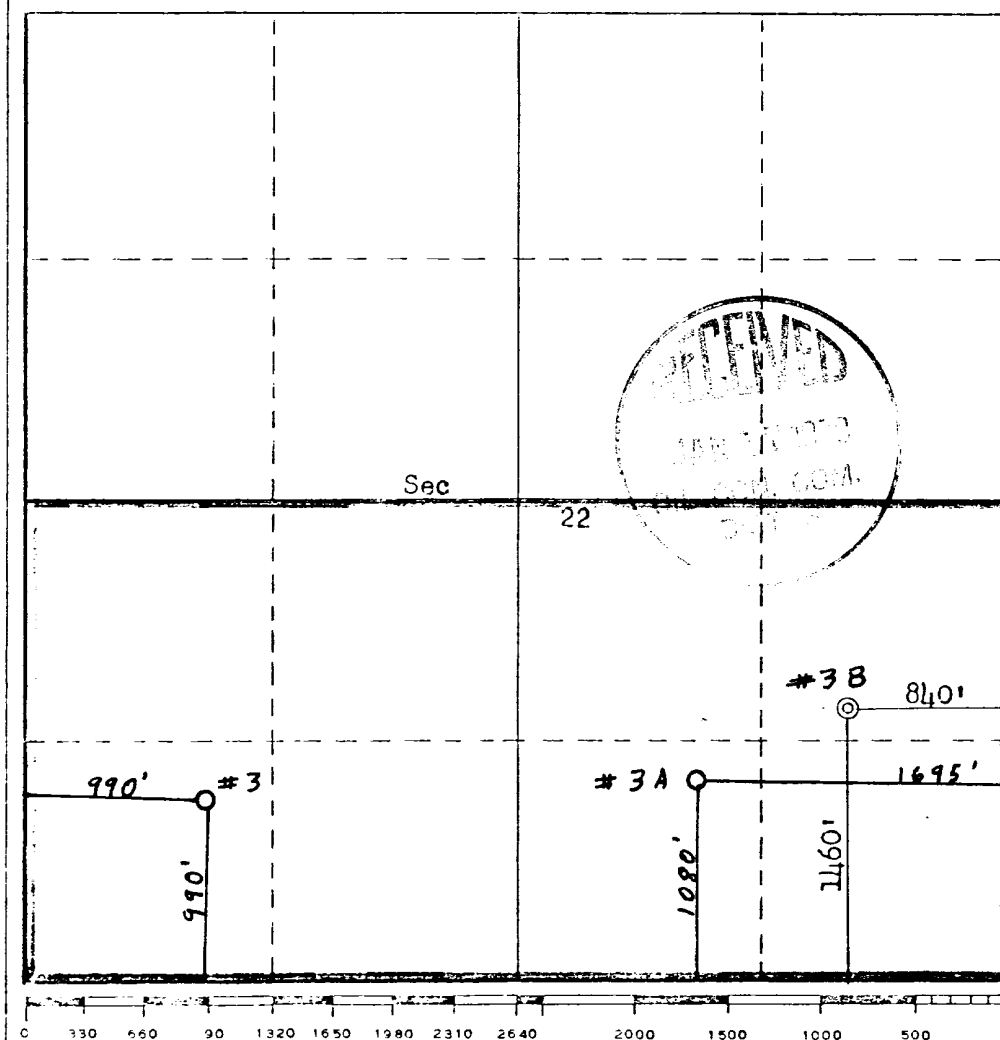
- Outline the acreage dedicated to the subject well by colored pencil or hachure marks on the plat below.
- If more than one lease is dedicated to the well, outline each and identify the ownership thereof (both as to working interest and royalty).
- If more than one lease of different ownership is dedicated to the well, have the interests of all owners been consolidated by communitization, unitization, force-pooling, etc?

One well lease

☐ Yes ☒ No If answer is "yes," type of consolidation _____

If answer is "no," list the owners and tract descriptions which have actually been consolidated. (Use reverse side of this form if necessary.) None have been consolidated as yet.

No allowable will be assigned to the well until all interests have been consolidated (by communitization, unitization, forced-pooling, or otherwise) or until a non-standard unit, eliminating such interests, has been approved by the Commission.



CERTIFICATION

I hereby certify that the information contained herein is true and complete to the best of my knowledge and belief.

Name Fred B. Kerr Jr.
Position
Production Analyst
Company
Tenneco Oil Company
Date
January 3, 1978

I hereby certify that the well location shown on this plat was plotted from field notes of actual surveys made by me or under my supervision, and that the same is true and correct to the best of my knowledge and belief.

Date Surveyed
December 20, 1977

Registered Professional Engineer and/or Land Surveyor

Fred B. Kerr Jr.

Certificate No.

3950

BLM SEEDING REQUIREMENTS
IN THE FARMINGTON RESOURCE AREA

1. SEED MIXTURE 2

2. TIME:

All seeding will take place between July 1 and September 15.

3. EQUIPMENT:

Seeding will be done with a disc-type drill with two boxes for various seed sizes. The drill rows will be eight to ten inches apart. The seed will be planted not less than one-half inch deep or more than one inch deep. The seeder will be followed with a drag, packer, or roller to insure uniform coverage of the seed, and adequate compaction. Drilling will be done on the contour where possible, not up and down the slope. Where slopes are too steep for contour drilling, a "cyclone" hand seeder or similar broadcast seeder will be used. Seed will then be covered to the depth described above by whatever means is practical.

4. SPECIES TO BE PLANTED IN POUNDS PURE-LIVE-SEED PER ACRE:

CRESTED WHEATGRASS (Agropyron desertorum) - $3\frac{1}{2}$ lbs.

FOURWING SALTBUSH (dewinged) (Atriplex canescens) - $\frac{1}{2}$ lb.

SAND DROPSEED (Sporobolus cryptandrus) - $\frac{3}{4}$ lb.

WINTERFAT (Eurotia lanata) - $\frac{1}{2}$ lb.

ALKALI SACATON (Sporobolus airoides) - $\frac{3}{4}$ lb.