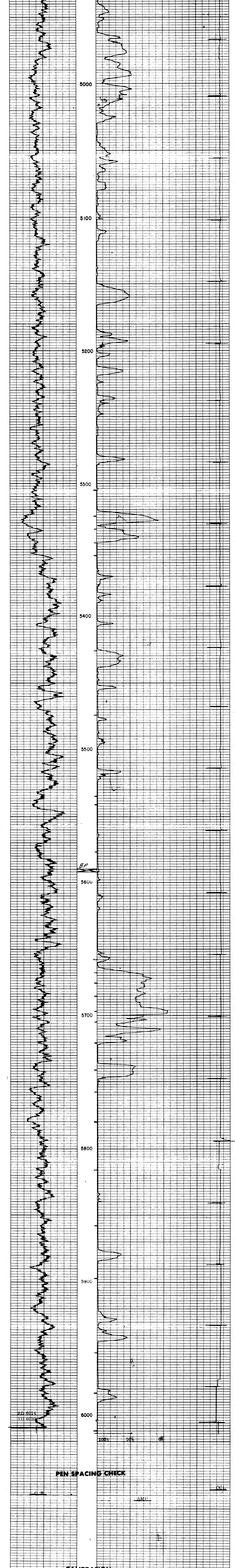


CEMENT BOND LOG

FILE NO.	COMPANY: BLACKWOOD & NICHOLS	WELL: NEBU # 39-A	STATE: NEW MEXICO
FIELD: BLANCO MESA VERDE	COUNTRY: SAN JUAN	LOCATION: 1210' F.N.L. x 1210' F.W.L.	OTHER SERVICES: Jet Perforate
SEC: 36	TWP: 31N	RANGE: 8W	GROUND LEVEL: 6020
RECORDED BY: K.B.	DATE: 5-9-78	TYPE FLUID IN HOLE: Water	RECORDED BY: K.B.
DEPTH: 5300	RECORDED BY: IONG	RECORDED BY: IONG	RECORDED BY: IONG
CASTING REC. Size: 8 1/2	Grade: 100	Type Joint: O.B.	WHITENED: U
Surface String	Primary Cementing Data	Production	Liner
Prot. String	Surface	Production	Liner
Vol. of cement	Additive by %	Retarder by %	Water loss
Drilling mud type			

COMPRESSIVE STRENGTH (p.s.i. Curing Temp.)			
Time Elapsed	Surface	Protective	Production
24 hrs.	F	F	F
48 hrs.	F	F	F
72 hrs.	F	F	F

PRIMARY CEMENTING PROCEDURE		Bond Equipment Data	
Hour	date	Run No.	Type standoff
Started pumping cement			Rubber
Plug on bottom			Logging speed
Release pressure			Stg. Sen. 95
Start Cement Bond Log			Out. Sen. 98
Finish Cement Bond Log			T-R Spacing 5'
Preceding fluid	Volume	Pipe reciprocated during Pumping:	Yes No
Returns: Full	Partial	Pipe reciprocated after plug down:	Yes min. No



STARTED PUMPING CEMENT	PLUG ON BOTTOM	RELEASE PRESSURE	START CEMENT BOND LOG	FINISH CEMENT BOND LOG
PRECEDING FLUID	VOLUME	PIPE RECIPROCATED DURING PUMPING:	YES	NO
RETURNS: FULL	PARTIAL	PIPE RECIPROCATED AFTER PLUG DOWN:	YES	MIN. NO