

**NEW MEXICO OIL CONSERVATION COMMISSION
WELL LOCATION AND ACREAGE DEDICATION PLAT**

Form C-102
Supersedes C-128
Effective 1-1-55

All distances must be from the outer boundaries of the Section.

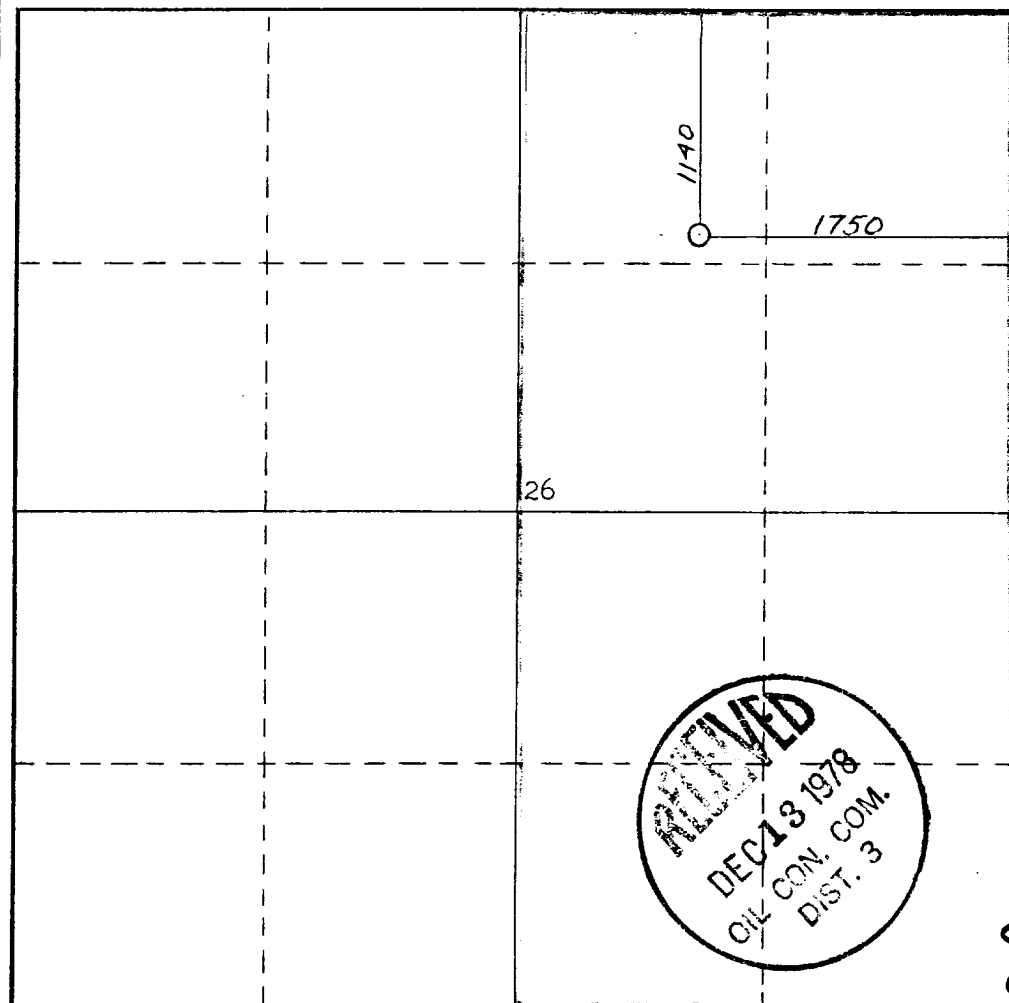
Operator SUPRON ENERGY CORPORATION			Lease HUNSAKER		Well No. 2-R
Unit Letter B	Section 26	Township 31 North	Range 9 West	County SAN JUAN	
Actual Footage Location of Well: <div style="display: flex; justify-content: space-between; align-items: center;"> 1140 feet from the North line and 1750 feet from the East line </div>					
Ground Level Elev. 6411	Producing Formation MESAVERDE	Pool BLANCO		Dedicated Acreage: E 1/2 313.16 Acres	

1. Outline the acreage dedicated to the subject well by colored pencil or hachure marks on the plat below.
2. If more than one lease is dedicated to the well, outline each and identify the ownership thereof (both as to working interest and royalty).
3. If more than one lease of different ownership is dedicated to the well, have the interests of all owners been consolidated by communitization, unitization, force-pooling, etc?

☐ Yes ☐ No If answer is "yes," type of consolidation _____

If answer is "no," list the owners and tract descriptions which have actually been consolidated. (Use reverse side of this form if necessary.) _____

No allowable will be assigned to the well until all interests have been consolidated (by communitization, unitization, forced-pooling, or otherwise) or until a non-standard unit, eliminating such interests, has been approved by the Commission.



CERTIFICATION

I hereby certify that the information contained herein is true and complete to the best of my knowledge and belief.

Rudy D. Motto
Name

Rudy D. Motto

Position

Area Superintendent

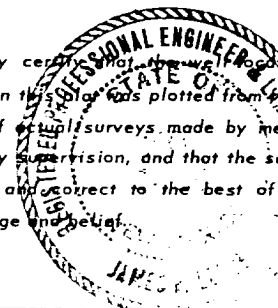
Company

SUPRON ENERGY CORPORATION

Date

December 11, 1978

I hereby certify that the location shown on this plat was plotted from field notes of actual surveys made by me, or under my supervision, and that the same is true and correct to the best of my knowledge and belief.



Date Surveyed

6 April 1978

Registered Professional Engineer
and/or Land Surveyor

James E. Lane

Certificate No.

