

NEW MEXICO OIL CONSERVATION COMMISSION
WELL LOCATION AND ACREAGE DEDICATION PLAT

Form C-102
Supersedes C-128
Effective 1-1-65

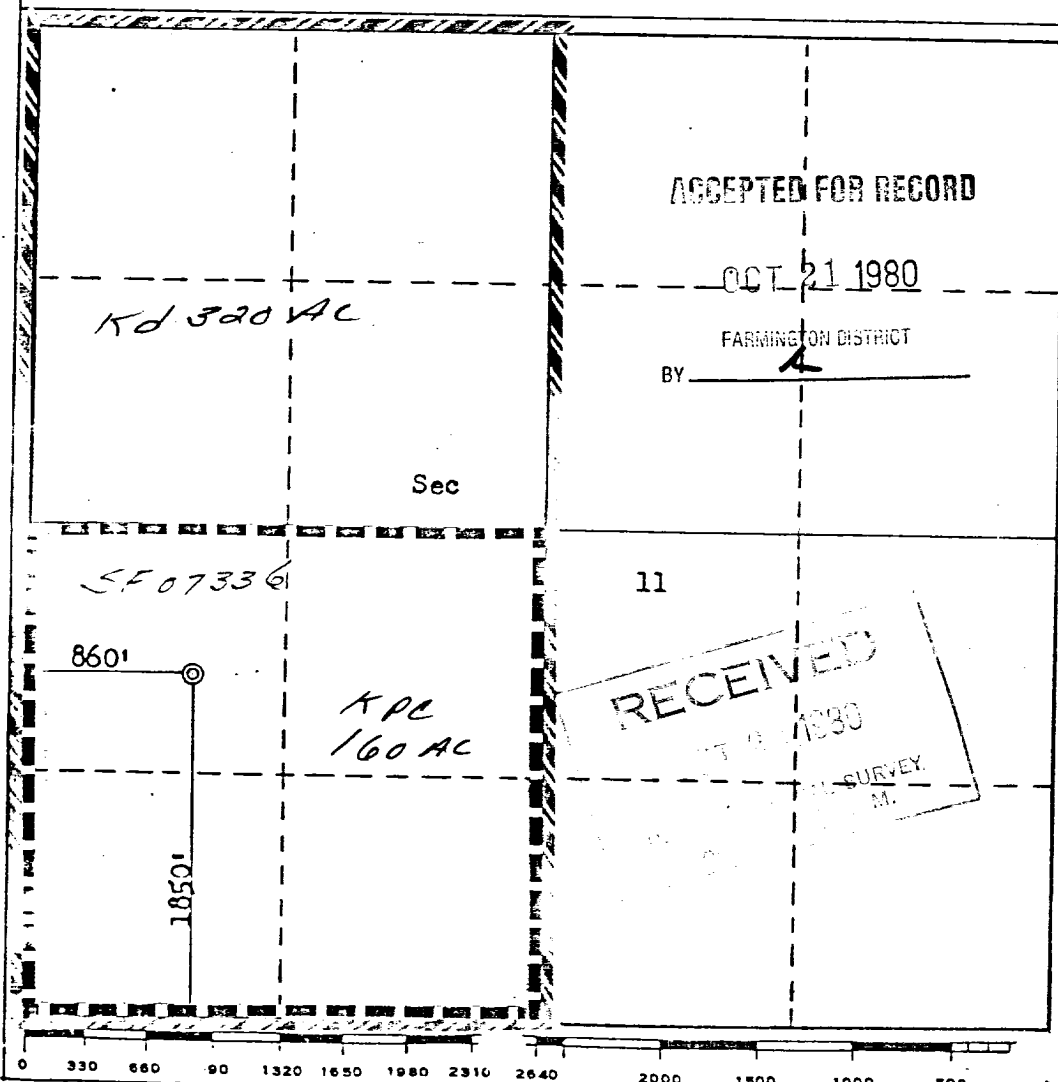
All distances must be from the outer boundaries of the Section.

Operator TENNECO OIL COMPANY			Lease FLORANCE		Well No. 111
Unit Letter L	Section 11	Township 30N	Range 9W	County San Juan	
Actual Postage Location of Well: 1350 feet from the South line and 860 feet from the West line					
Ground Level Elev. 6063	Producing Formation Pictured Cliffs / Dakota		Pool Blanco P.C. / Basin Dakota	Dedicated Acreage: 320 Acres	

- Outline the acreage dedicated to the subject well by colored pencil or hatchure marks on the plat below.
Sec 11 - 320 AC
- If more than one lease is dedicated to the well, outline each and identify the ownership thereof (both as to working interest and royalty).
Only one lease dedicated - SF-678336
- If more than one lease of different ownership is dedicated to the well, have the interests of all owners been consolidated by communitization, unitization, force-pooling, etc? **NA**
☐ Yes ☐ No If answer is "yes," type of consolidation _____

If answer is "no," list the owners and tract descriptions which have actually been consolidated. (Use reverse side of this form if necessary.) _____

No allowable will be assigned to the well until all interests have been consolidated (by communitization, unitization, forced-pooling, or otherwise) or until a non-standard unit, eliminating such interests, has been approved by the Commission.



CERTIFICATION

I hereby certify that the information contained herein is true and complete to the best of my knowledge and belief.

Name _____

Position _____

Company _____

Date _____

I hereby certify that the well location shown on this plat was plotted from field notes of actual surveys made by me or under my supervision, and that the same is true and correct to the best of my knowledge and belief.

Date Surveyed _____

October 31, 1978
Registered Professional Engineer
and/or Land Surveyor No. 3250

Fred B. Kerr Jr.
Certificate No. 3950