

**NEW MEXICO OIL CONSERVATION COMMISSION
WELL LOCATION AND ACREAGE DEDICATION PLAT**

Form C-102
Supersedes C-128
Effective 1-1-65

All distances must be from the outer boundaries of the Section.

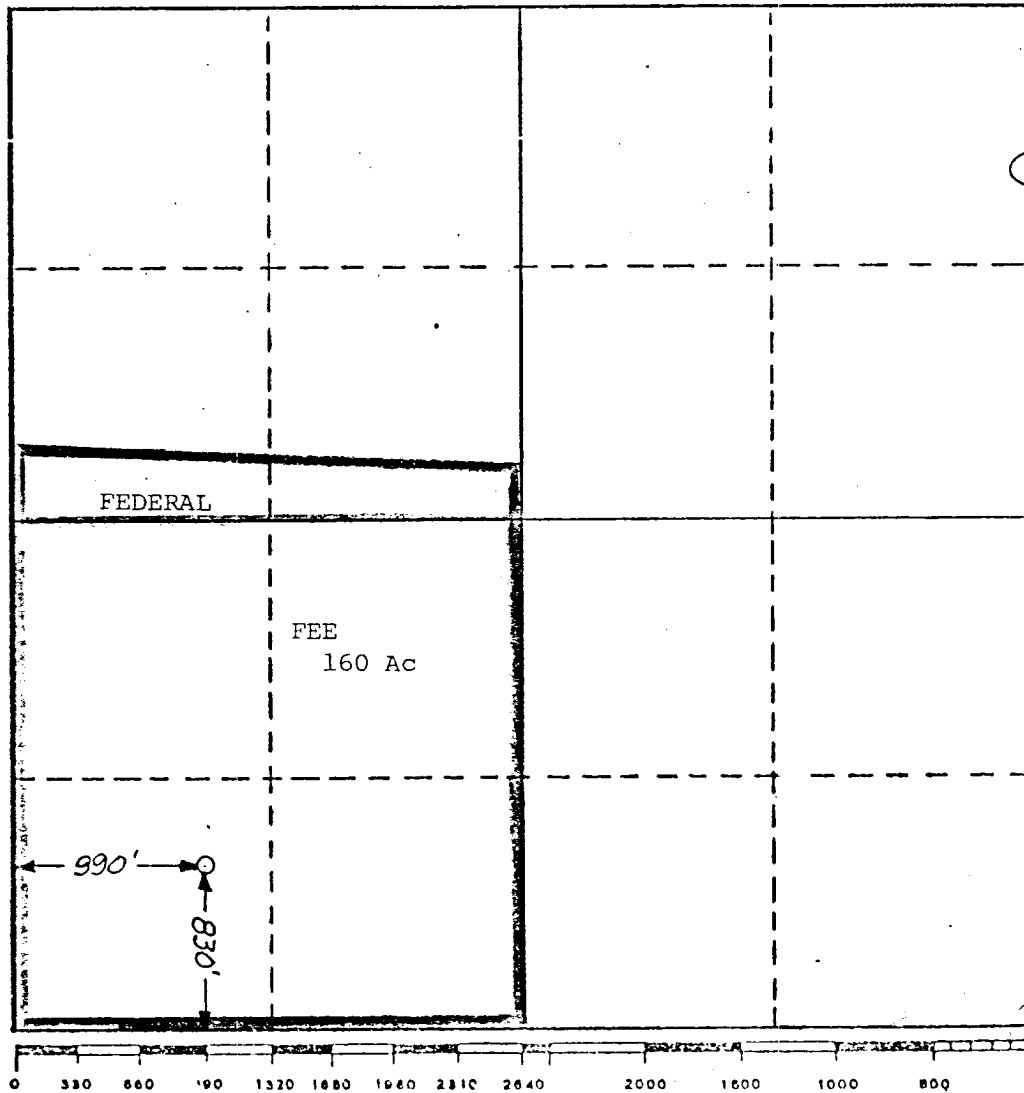
| | | | | | |
|---|---|--------------------------|--|---------------------------|---|
| Operator BLACKWOOD & NICHOLS | | | Lease NORTHEAST BLANCO UNIT | | Well No. 204 |
| Unit Letter M | Section 1 | Township 31 N. | Range 7W., N.M.P.M. | County SAN JUAN | |
| Actual Footage Location of Well: 830 feet from the south line and 990 feet from the west line | | | | | |
| Ground Level Elev: 6546 UG | Producing Formation Pictured Cliffs | | Pool South Los Pinos Pictured Cliffs | | Dedicated Acreage: 185.68 Acres |

1. Outline the acreage dedicated to the subject well by colored pencil or hachure marks on the plat below.
2. If more than one lease is dedicated to the well, outline each and identify the ownership thereof (both as to working interest and royalty).
3. If more than one lease of different ownership is dedicated to the well, have the interests of all owners been consolidated by communitization, unitization, force-pooling, etc?

☒ Yes ☐ No If answer is "yes," type of consolidation Unitization

If answer is "no," list the owners and tract descriptions which have actually been consolidated. (Use reverse side of this form if necessary.) _____

No allowable will be assigned to the well until all interests have been consolidated (by communitization, unitization, forced-pooling, or otherwise) or until a non-standard unit, eliminating such interests, has been approved by the Commission.



CERTIFICATION

I hereby certify that the information contained herein is true and complete to the best of my knowledge and belief.

DeLasso Loos

Name

DeLasso Loos

Position

District Manager

Company

Blackwood & Nichols Co., Ltd.

Date

April 19, 1979

I hereby certify that the well location shown on this plat was plotted from field notes of actual surveys made by me or under my supervision, and that the same is true and correct to the best of my knowledge and belief.

Date Surveyed

April 13, 1979

Registered Professional Engineer and/or Land Surveyor

John A. Knepper
John A. Knepper, L.S.

Certificate No.

1941