

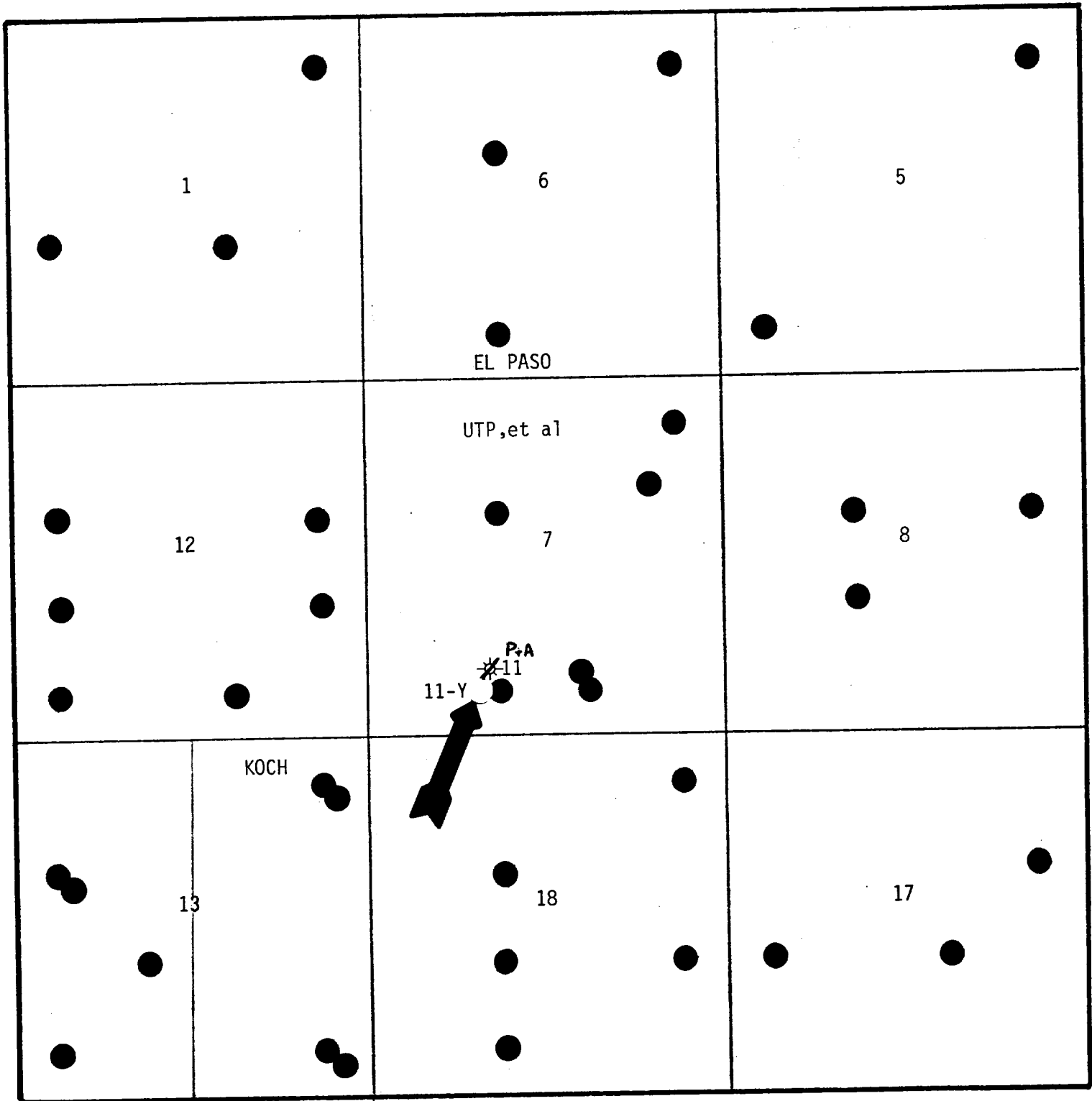
E X H I B I T S F O R

C A S E 6 8 4 0

M A R C H 2 6 , 1 9 8 0

U N I O N T E X A S P E T R O L E U M
J O H N S T O N F E D E R A L # 1 1 - Y *N-2-31-7*
D O W N H O L E C O M M I N G L I N G

EXHIBIT 1



R-10-W R-9-W
 BEFC
 CIP
 6840
 UNION TEXAS PET
 3-26-80

Scale: 1" = 2000'

- - P.C. producer
- - MV producer



Union Texas Petroleum Division
Suite 1010 Lincoln Tower
1860 Lincoln Street
Denver, Colorado 80295

January 14, 1980

New Mexico Oil Conservation
Commission
P. O. Box 2088
Santa Fe, New Mexico 87501

RE: Union Texas Petroleum
Johnston Federal #11Y
SE SW Sec.7-T31N-R9W
San Juan County, N. Mexico

Gentlemen:

Please be advised that EL PASO NATURAL GAS CO. has no objections to Union Texas Petroleum's request to down hole commingle production from the Fruitland and Pictured Cliffs reservoirs in the captioned well.

Carl E. Matthews
SIGNED

Regional Production Mgr.
TITLE

1/28/80
DATE

BEFORE	AMENDED	COMMENTS
OIL & GAS	COMMISSION	
		2
		6840
SUBJECT	Union Texas Pet	
Hearing	3-26-80	



Union Texas Petroleum Division
Suite 1010 Lincoln Tower
1860 Lincoln Street
Denver, Colorado 80295

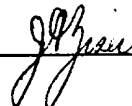
January 14, 1980

New Mexico Oil Conservation
Commission
P. O. Box 2088
Santa Fe, New Mexico 87501

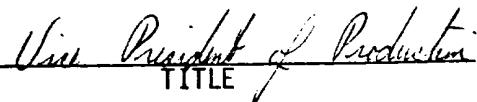
RE: Union Texas Petroleum
Johnston Federal #11Y
SE SW Sec.7-T31N-R9W
San Juan County, N. Mexico

Gentlemen:

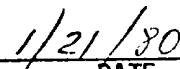
Please be advised that KOCH INDUSTRIES, INC. has no objections to Union Texas Petroleum's request to down hole commingle production from the Fruitland and Pictured Cliffs reservoirs in the captioned well.



SIGNED



TITLE

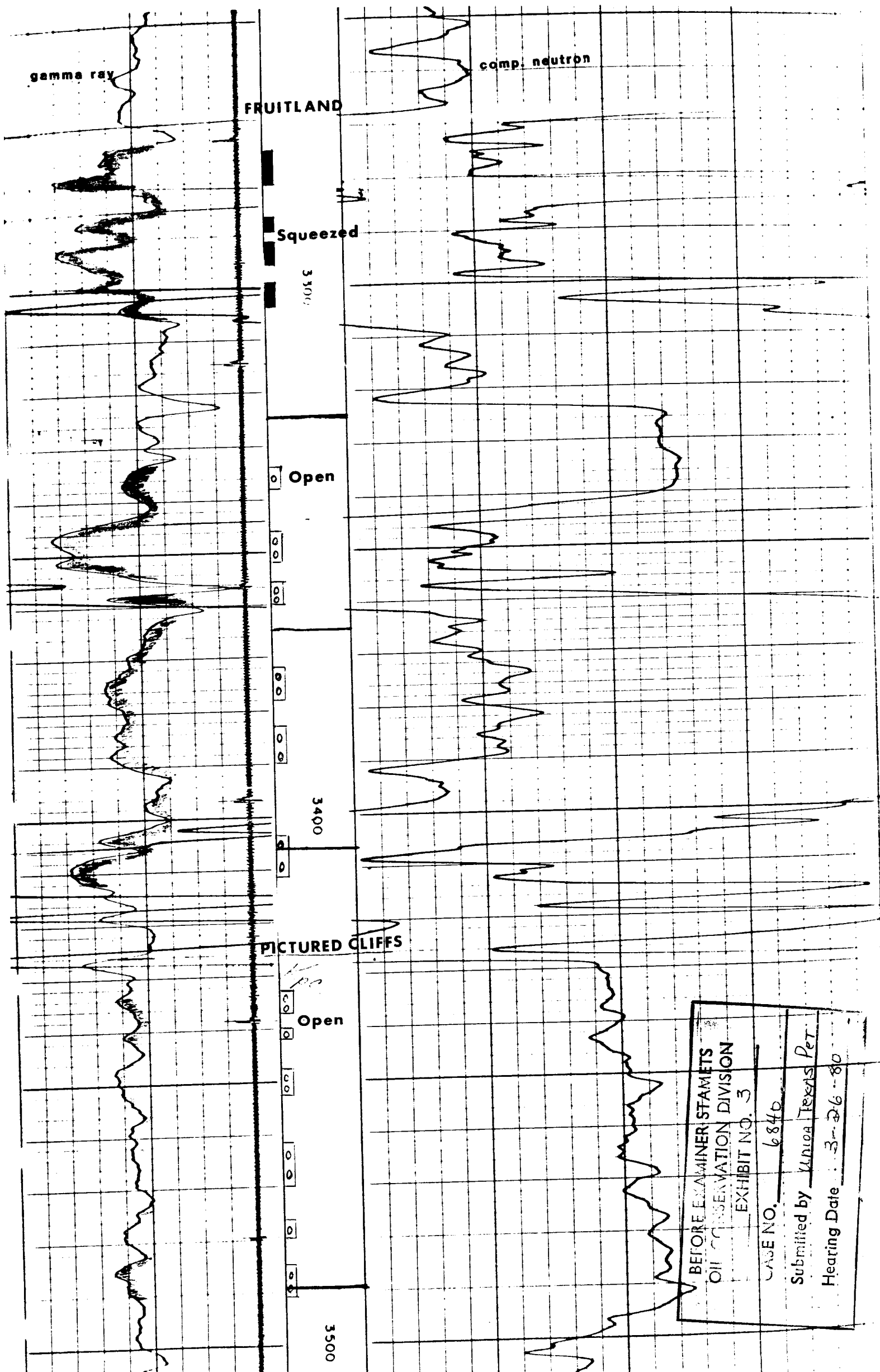


DATE

BEFORE EXAMINER STAMETS	
OIL CONSERVATION DIVISION	
EXHIBIT NO.	2
CASE NO.	6840
Submitted by	Union Texas Pet
Hearing Date	3-26-80

UNION TEXAS PETROLEUM
JOHNSTON FEDERAL #11-Y

EXHIBIT 3



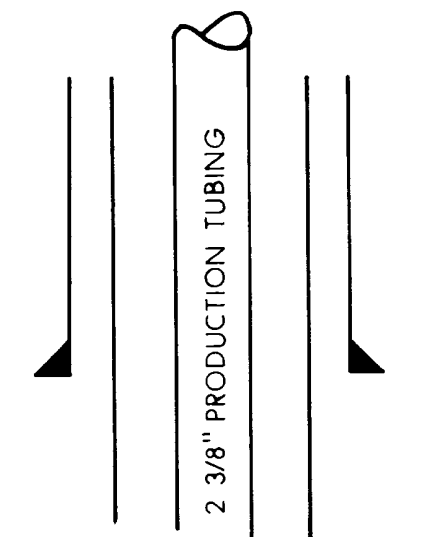
BEFORE EXAMINER STAMETS	
OIL CONSERVATION DIVISION	
EXHIBIT NO. 3	
CASE NO.	6840
Submitted by	Union Texas Per.
Hearing Date	3-26-80

UNION TEXAS PETROLEUM CORP.

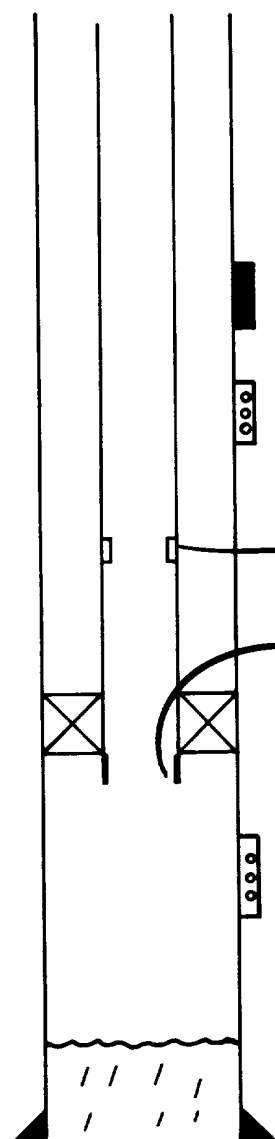
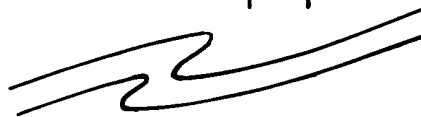
JOHNSTON FEDERAL # 11-Y

SE SW 7 - T. 31 N. - R. 9 W.

DATUM: 6622' (KB) 10' AGL



9 5/8" Casing cemented at 334' (KB) with 200 sx. (cement circulated)

FRUITLAND PERFS:

3275-3281'; 3286-3289' } Squeezed off with 300 sx. cement
 3292-3296'; 3299-3304' }

3334-3338'; 3346-3352'; 3356-3360'
 3372-3378'; 3383-3390'; 3404-3412'

SLIDING SLEEVE (CLOSED) at 3416'

"F" NIPPLE at 3429'

BAKER MOD. "F" at 3420' (KB)

PICTURED CLIFFS PERFS:

3433-3436'; 3440-3442'; 3447-3453'
 3462-3470'; 3476-3480'; 3485-3491'

P.B.T.D. 3644' (KB)

5 1/2" Casing cemented at 3654' (KB) with 1200 sx.

BEFORE EXAMINER STAMETS OIL CONSERVATION DIVISION	EXHIBIT NO. <u>4</u>
	CASE NO. <u>6840</u>
	Submitted by <u>Union Texas Pet</u>
	Logging Date <u>3-26-80</u>

NEW MEXICO OIL CONSERVATION COMMISSION

NORTHWEST NEW MEXICO PACKER-LEAKAGE TEST

This form is not to be used for reporting packer leakage tests in Southeast New Mexico

Well

Operator Union Texas Petroleum Lease Johnston Federal No. 11-Y
Location Unit N Sec. 7 Twp. 31N Rge. 9W County San Juan

Type of Prod. Gas Method of Prod. Flow Prod. Medium (Tbg. or Csg.)
Name of Reservoir or Pool (Oil or Gas)

Upper Completion	<u>Fruitland</u>	<u>Gas</u>	<u>Flow</u>	<u>Casing</u>
Lower Completion	<u>Blanco Pictured Cliff</u>	<u>Gas</u>	<u>Flow</u>	<u>Tubing</u>

PRE-FLOW SHUT-IN PRESSURE DATA

Upper Completion	Hour, date Shut-in	Length of time shut-in	SI press. psig	Stabilized? (Yes or No)
	<u>12-5-79</u>	<u>7 days</u>	<u>718</u>	<u>Yes</u>
Lower Completion	Hour, date Shut-in	Length of time shut-in	SI press. psig	Stabilized? (Yes or No)
	<u>12-5-79</u>	<u>7 days</u>	<u>718</u>	<u>Yes</u>

FLOW TEST NO. 1

Commenced at (hour, date)*		<u>12-12-79</u>		Zone producing (<u>Upper</u>) or Lower):	
Time (hour, date)	Lapsed time since*	Upper Compl.	Lower Compl.	Prod. Zone Temp.	Remarks
<u>12-12-79</u>	<u>0-days</u>	<u>718</u>	<u>718</u>		
<u>1:30 p.m.</u>	<u>15-min</u>	<u>81</u>	<u>403</u>		
	<u>30-min</u>	<u>62</u>	<u>345</u>		
	<u>45-min</u>	<u>51</u>	<u>318</u>		
	<u>1-hour</u>	<u>47</u>	<u>289</u>		
	<u>2-hours</u>	<u>42</u>	<u>265</u>		
	<u>3-hours</u>	<u>38</u>	<u>250</u>		

Production rate during test
Oil: 604 BOPD based on MCFPD; Tested thru (Orifice or Meter): 3/4 positive choke
Gas: 604

MID-TEST SHUT-IN PRESSURE DATA

Upper Compl	Hour, date Shut-in	Length of time shut-in	SI press. psig	Stabilized? (Yes or No)
	<u>12-12-79</u>	<u>7 days</u>	<u>697</u>	<u>Yes</u>
Lower Compl	Hour, date Shut-in	Length of time shut-in	SI press. psig	Stabilized? (Yes or No)
	<u>12-5-79</u>	<u>14 days</u>	<u>697</u>	<u>Yes</u>

FLOW TEST NO. 2

Commenced at (hour, date)**		<u>12-19-79</u>		Zone producing (Upper or <u>Lower</u>):	
Time (hour, date)	Lapsed time since **	Upper Compl.	Lower Compl.	Prod. Zone Temp.	Remarks
<u>4: p.m.</u>	<u>0 days</u>	<u>697</u>	<u>697</u>		
	<u>15 min</u>	<u>460</u>	<u>236</u>		
	<u>30 min</u>	<u>409</u>	<u>162</u>		
	<u>45 min</u>	<u>387</u>	<u>150</u>		
	<u>1-hour</u>	<u>359</u>	<u>148</u>		
	<u>2-hours</u>	<u>341</u>	<u>128</u>		
	<u>3-hours</u>	<u>323</u>	<u>118</u>		

Production rate during test
Oil: 1572 BOPD based on MCFPD; Tested thru (Orifice or Meter): 3/4 positive choke
Gas: 1572

REMARKS:

I hereby certify that the information herein contained is true and complete to the best of my knowledge.

Approved: Not Approved 19
New Mexico Oil Conservation Commission
By Repair Requested
Title

Operator Union Texas Petroleum
By Ronald Miller
Title District Production Manager
Date January 8, 1980

EXHIBIT 6

COMPLETION SUMMARY

- 10-11-79 Move in completion rig. Ran 4½" bit, 5½" casing scraper and 117 jts 2 3/8" tubing and tagged bottom at 3523' KB.
- 10-12-79 Pressure tested casing to 3000 psi, 5 minutes, held OK. Rolled hole to 2% KCL water. Pull tubing. Perforated Pictured Cliffs 1 JSPF 3433-36, 3440-42, 3447-53, 3462-70, 3476-80, and 3485-91. Ran packer, "F" nipple, and 102 jts tubing all measuring 3178' and set packer at 3182' KB. Acidized with 1500 gallons 7½% HCL and 50 ball sealers. AIR 7.6 bpm at 2575 psi. Poor ball action. ISIP zero psi. Released packer, lowered through perforations and raised packer to 3182, left packer unset, and swabbed 14 BLW in 1½ hrs.
- 10-13-79 Tubing on slight vacuum. IFL 1300'. Swabbed 4½ hrs and recovered 46 BLW. FFL 2100'. Have a slight blow of gas. Final CP 25 psi. Pull out of hole.
- 10-14-79 SICP 500 psi. Foam fracked with 96,000 lbs 10/20 sand. AIR 30 bpm at 1500 psi. ISIP 1450 psi. Opened well through 3/4" choke and after 6 hrs, FCP 100 psi, rate 1.385 MMCFPD. Left open overnight.
- 10-15-79 Flow well through 3/4" choke. Rate 1.385 MMCFPD. Still wet.
- 10-16-79 SICP 635 psi. Set wireline and bridge plug at 3420' KB. Dumped 5 gallons sand on plug. Perforated Fruitland 1 JSPF 3275-81, 3286-89, 3292-96, 3299-3304, 3334-38, 3346-52, 3356-60, 3372-78, 3383-90, 3404-12. Measured gas flow at 1.385 MMCFPD. Ran packer and 106 jts tubing and set packer at 3319' KB. Acidize with 2500 gallons 15% HCL and 60 ball sealers. AIR 3.3 bpm at 2600 psi. Good ball action. Pull out of hole with packer. Ran bridge plug and packer and set bridge plug 3319 and packer at 3207. Acidized with 1500 gallons 15% HCL and 30 balls. Poor ball action. AIR 4 bpm at 1100 psi. ISIP 500 psi. Unseated packer and SI for night.
- 10-17-79 SITP 1100 psi, SICP 100 psi. Lower tubing and latch onto bridge plug and pull out of hole. Ran tubing and landed at 3365' KB. SI for night.
- 10-18-79 Tubing on slight vacuum. SICP zero psi. IFL 50'. Swabbed 81 BLW in 8 hrs ending at 5 p.m. FFL 1200'. Final CP 500 psi. SI for night.
- 10-19-79 SICP 1065 psi, SITP 125 psi. Swabbed and flowed all day. Too wet to burn. Left open on 2" overnight.
- 10-20-79 FCP 125 psi with good blow out 2". Installed 3/4" choke, and after 8 hrs thru choke, FCP 150 psi, FTP 35 psi, rate 581 MCFPD. Too wet to burn.
- 10-21-79 FCP 124 psi, FTP 25 psi, rate 457 MCFPD. Too wet to burn. Left open on 3/4" choke overnight.
- 10-22-79 FCP psi, FTP 20 psi, rate 396 MMCFPD. Too wet to burn. Circulated bridge plug clean and retrieve bridge plug at 3420' KB. Attempt to run packer, could not get in hole. Gas rate 1.4 MMCFPD with FP 100 psi on 3/4" choke.
- 10-23-79 FP 100 psi, rate 1.4 MMCFPD. Too wet to burn. Set drillable bridge plug at 3320' KB. Ran packer to 3246' and tested back side to 1500 psi, 7 min, OK.

COMPLETION SUMMARY CONTINUED

Set packer at 3059' and pumped down tubing at 5 $\frac{1}{2}$ bpm at 1400 psi and had full returns out bradenhead. SI for night.

- 10-24-79 Pressured casing to 1000 psi. Squeezed perfs from 3304 to 3275 with 300 sx Class "B" with 2% calcium chloride. Squeezed to 2150 psi. Pull out of hole with packer and SI for night.
- 10-25-79 Squeezed bradenhead with 50 sx Class "B" with 2% calcium chloride. 3 bpm at 700 psi. Ran 4 $\frac{1}{2}$ " bit and 102 jts tubing and tagged cement at 3135' KB. Drilled out to bridge plug at 3320. Pressured 1300 psi, 15 minutes, held OK. Pulled 2 stands tubing. SI for night.
- 10-26-79 Slight pressure on bradenhead. Bled right off. Bradenhead OK. SICP and TP zero. Drilled bridge plug at 3320'. Lowered tubing and tagged sand fill at 3460'. Drilled out to 3470'. Pulled 5 stands tubing and SI for night.
- 10-27-79 Lowered tubing and tagged fill at 3468'. Cleaned out to 3486' and lost circulation. Lost 100 bbls. Cleaned out to 3644. Pull out of hole. Ran 113 jts tubing totaling 3516' and landed at 3518' KB. Rig up to swab. IFL 100'. Recovered 21 BLW in 2 runs and SI for weekend.
- 10-28-79 Sunday- Crew off.
- 10-29-79 SITP zero, SICP 800 psi. IFL 200'. Made 18 runs, well kicked off flowing. Measured gas at 766 MCF with FTP 50 psi, FCP 425 psi.
- 10-30-79 After flowing 18 hrs through 3/4" choke, FCP 275 psi, FTP 40 psi, rate 643 MCFPD. Landed tubing at 3515. Nipple down BOP and nipple up tree. SI for night.
- 10-31-79 SICP 650 psi, SITP 175 psi. Flowed 8 hrs on 3/4" choke, FCP 210 psi, FTP 54 psi rate 816 MCFPD. Making heavy spray of water.
- 11-1-8-79 Blew well intermittently to clean up: Typical date: SICP 650 psi, SITP 580 psi. Flow 3 hrs thru 3/4" choke, FTP 60 psi, FCP 200 psi, rate 890 MCFPD. Burned continuously but still slightly wet.
- 11-9-21-79 SICP 650 psi, SITP 620 psi.
- 11-21-79 Bled well down. Move in rig. Pull tubing. Ran HALCO RTTS packer and 110 jts tubing and set packer at 3424' KB. Opened tubing (Pictured Cliffs) on 3/4" choke. After 45 minutes FTP 70 psi, FCP 25 psi, rate 1014 MCFPD with moderate spray of water. SI for Thanksgiving.
- 11-22-79 Thanksgiving-Crew off
- 11-23-79 SICP 1000 psi, SITP 610 psi. Flowed tubing 9 hrs through 3/4" choke, FTP 56 psi, FCP 1120 psi, rate 841 MCFPD. Burned 95% of time. SI for night.
- 11-24-79 SICP 1140 psi, SITP 630 psi. Blew casing and tubing for 9 hrs. FTP 58 psi, rate 866 MCFPD. FCP zero, only 2' flare out casing. SI for weekend.
- 11-25-79 Sunday-Crew off

11-26-79

11-27-79

Index of
Communication

11-28-79

11-29-79

11-50-79

1000
 1000
 1000

92-1-79

STOP and TP 675 psi. Bled casing through 3/4" choke $\frac{1}{2}$ hour, CP 130 psi, TP fell to 350 psi. Rig up to check that sleeve is closed. It was closed. Set blanking plug in "F" nipple.

Union Texas Petroleum
Johnston Federal #11-Y
SESW Section 2, T31N, R9W
San Juan County, New Mexico

Elledge Consulting & Production Company

COMPLETION SUMMARY CONTINUED

12-2-79

Sunday-Crew off

12-3-79

Made in pulling unit. CP 700 psi, TR 70 psi. Nipple up BOP. Pulled out of hole hat. SI for night.

12-4-79


SICP 650 psi. Ran final production tubing as follows:

	Baker production tube	5.06'	
	Baker 1.78" ID "F" nipple	.96'	
	Sub 2 3/8"	6.05'	
	Seal section	3.56'	
	Locator		.75'
	Sliding Sleeve		2.62'
1	jt 2 3/8" tubing		31.23'
	Blast jt.		19.84'
	Blast jt.		19.34'
106	jt 2 3/8" tubing		3301.78'
	Sub 2 3/8"		2.20'
	Sub 2 3/8"		4.10'
1	jt 2 3/8" tubing		29.14'
108	jts	15.63'	3411.00'
		landed below KB	9.00'
		packer at	3420.00' KB

Packer has 8000 lbs set on it. End of production tube at 3436' KB. Top of "F" nipple at 3430' KB. Top of sliding sleeve 3417' KB. Blast joint from 3385' to 3346'. Nipple down BOP, nipple up tree. SI for night.

12-5-79

Rig up and fish plug out of "F" nipple. Rig down rig. SICP 670 psi, SICP 690 psi. Flowed tubing 3 hrs thru 3/4" choke, FTP 100 psi, rate 1385 MCFPD. Casing pressure bled to 270 psi. SI pending orders.



Harold W. Elledge, P.E.
Petroleum Engineer

HWE/jr

LOG #	6840
DATE	3-26-80
TIME	
BY	Union Texas P&T
REMARKS	

EXHIBIT 6

COMPLETION SUMMARY

- 10-11-79 Move in completion rig. Ran $4\frac{1}{2}$ " bit, $5\frac{1}{2}$ " casing scraper and 117 jts $2\frac{3}{8}$ " tubing and tagged bottom at 3523' KB.
- 10-12-79 Pressure tested casing to 3000 psi, 5 minutes, held OK. Rolled hole to 2% KCL water. Pull tubing. Perforated Pictured Cliffs 1 JSPF 3433-36, 3440-42, 3447-53, 3462-70. 3476-80. and 3485-91. Ran packer, "F" nipple, and 102 jts tubing all measuring 3178' and set packer at 3182' KB. Acidized with 1500 gallons $7\frac{1}{2}$ % HCL and 50 ball sealers. AIR 7.6 bpm at 2575 psi. Poor ball action. ISIP zero psi. Released packer, lowered through perforations and raised packer to 3182, left packer unset, and swabbed 14 BLW in $1\frac{1}{2}$ hrs.
- 10-13-79 Tubing on slight vacuum. IFL 1300'. Swabbed $4\frac{1}{2}$ hrs and recovered 46 BLW. FFL 2100'. Have a slight blow of gas. Final CP 25 psi. Pull out of hole.
- 10-14-79 SICP 500 psi. Foam fracked with 96,000 lbs 10/20 sand. AIR 30 bpm at 1500 psi. ISIP 1450 psi. Opened well through $3/4$ " choke and after 6 hrs, FCP 100 psi, rate 1.385 MMCFPD. Left open overnight.
- 10-15-79 Flow well through $3/4$ " choke. Rate 1.385 MMCFPD. Still wet.
- 10-16-79 SICP 635 psi. Set wireline and bridge plug at 3420' KB. Dumped 5 gallons sand on plug. Perforated Fruitland 1 JSPF 3275-81, 3286-89, 3292-96, 3299-3304, 3334-38, 3346-52, 3356-60, 3372-78, 3383-90, 3404-12. Measured gas flow at 1.385 MMCFPD. Ran packer and 106 jts tubing and set packer at 3319' KB. Acidize with 2500 gallons 15% HCL and 60 ball sealers. AIR 3.3 bpm at 2600 psi. Good ball action. Pull out of hole with packer. Ran bridge plug and packer and set bridge plug 3319 and packer at 3207. Acidized with 1500 gallons 15% HCL and 30 balls. Poor ball action. AIR 4 bpm at 1100 psi. ISIP 500 psi. Unseated packer and SI for night.
- 10-17-79 SITP 1100 psi, SICP 100 psi. Lower tubing and latch onto bridge plug and pull out of hole. Ran tubing and landed at 3365' KB. SI for night.
- 10-18-79 Tubing on slight vacuum. SICP zero psi. IFL 50'. Swabbed 81 BLW in 8 hrs ending at 5 p.m. FFL 1200'. Final CP 500 psi. SI for night.
- 10-19-79 SICP 1065 psi, SITP 125 psi. Swabbed and flowed all day. Too wet to burn. Left open on 2" overnight.
- 10-20-79 FCP 125 psi with good blow out 2". Installed $3/4$ " choke, and after 8 hrs thru choke, FCP 150 psi, FTP 35 psi, rate 581 MCFPD. Too wet to burn.
- 10-21-79 FCP 124 psi, FTP 25 psi, rate 457 MCFPD. Too wet to burn. Left open on $3/4$ " choke overnight.
- 10-22-79 FCP psi, FTP 20 psi, rate 396 MMCFPD. Too wet to burn. Circulated bridge plug clean and retrieve bridge plug at 3420' KB. Attempt to run packer, could not get in hole. Gas rate 1.4 MMCFPD with FP 100 psi on $3/4$ " choke.
- 10-23-79 FP 100 psi, rate 1.4 MMCFPD. Too wet to burn. Set drillable bridge plug at 3320' KB. Ran packer to 3246' and tested back side to 1500 psi, 7 min, OK.

COMPLETION SUMMARY CONTINUED

- Set packer at 3059' and pumped down tubing at 5 $\frac{1}{2}$ bpm at 1400 psi and had full returns out bradenhead. SI for night.
- 10-24-79 Pressured casing to 1000 psi. Squeezed perfs from 3304 to 3275 with 300 sx Class "B" with 2% calcium chloride. Squeezed to 2150 psi. Pull out of hole with packer and SI for night.
- 10-25-79 Squeezed bradenhead with 50 sx Class "B" with 2% calcium chloride. 3 bpm at 700 psi. Ran 4 $\frac{1}{2}$ " bit and 102 jts tubing and tagged cement at 3135' KB. Drilled out to bridge plug at 3320. Pressured 1300 psi, 15 minutes, held OK. Pulled 2 stands tubing. SI for night.
- 10-26-79 Slight pressure on bradenhead. Bled right off. Bradenhead OK. SICP and FTP zero. Drilled bridge plug at 3320'. Lowered tubing and tagged sand fill at 3460'. Drilled out to 3470'. Pulled 5 stands tubing and SI for night.
- 10-27-79 Lowered tubing and tagged fill at 3468'. Cleaned out to 3486' and lost circulation. Lost 100 bbls. Cleaned out to 3644. Pull out of hole. Ran 113 jts tubing totaling 3516' and landed at 3518' KB. Rig up to swab. IFL 100'. Recovered 21 BLW in 2 runs and SI for weekend.
- 10-28-79 Sunday- Crew off.
- 10-29-79 SITP zero, SICP 800 psi. IFL 200'. Made 18 runs, well kicked off flowing. Measured gas at 766 MCF with FTP 50 psi, FCP 425 psi.
- 10-30-79 After flowing 18 hrs through 3/4" choke, FCP 275 psi, FTP 40 psi, rate 643 MCFPD. Landed tubing at 3515. Nipple down BOP and nipple up tree. SI for night.
- 10-31-79 SICP 650 psi, SITP 175 psi. Flowed 8 hrs on 3/4" choke, FCP 210 psi, FTP 54 psi rate 816 MCFPD. Making heavy spray of water.
- 11-1-8-79 Blew well intermittently to clean up: Typical date: SICP 650 psi, SITP 580 psi. Flow 3 hrs thru 3/4" choke, FTP 60 psi, FCP 200 psi, rate 890 MCFPD. Burned continuously but still slightly wet.
- 11-9-21-79 SICP 650 psi, SITP 620 psi.
- 11-21-79 Bled well down. Move in rig. Pull tubing. Ran HALCO RTTS packer and 110 jts tubing and set packer at 3424' KB. Opened tubing (Pictured Cliffs) on 3/4" choke. After 45 minutes FTP 70 psi, FCP 25 psi, rate 1014 MCFPD with moderate spray of water. SI for Thanksgiving.
- 11-22-79 Thanksgiving-Crew off
- 11-23-79 SICP 1000 psi, SITP 610 psi. Flowed tubing 9 hrs through 3/4" choke, FTP 56 psi, FCP 1120 psi, rate 841 MCFPD. Burned 95% of time. SI for night.
- 11-24-79 SICP 1140 psi, SITP 630 psi. Blew casing and tubing for 9 hrs. FTP 58 psi, rate 866 MCFPD. FCP zero, only 2' flare out casing. SI for weekend.
- 11-25-79 Sunday-Crew off

COMPLETION SUMMARY CONTINUED

- 11-26-79 SICP 1150 psi, SITP 640 psi. Bled well down. Released RTTS packer. Unloaded lots of water. Pull packer out of hole. Ran HALCO retrievable bridge plug and new RTTS packer and set bridge plug at 3423' KB and RTTS at 3241' KB. Flowed tubing (Fruitland) thru 3/4" choke. FTP 2 psi, rate 173 MCFPD. Ran swab. IFL 3000'. Recovered 20' of water. 2nd run - no recovery. After 2 hrs flowing FTP 2 psi, rate 173 MCFPD. SI for night.
- 11-27-79 SITP 1150 psi, SICP 10 psi. Bled tubing to zero in 10 minutes, did flare. Lowered RTTS packer to 3217' KB. Rig up HALCO and acidized Fruitland with 4000 gallons 15% HCL and flushed with 14 bbl 2% KCL water. AIR 5 bpm at 2200 psi. BDP 2800 psi. ISIP 400 psi, 5 min SIP zero. Total load water to be recovered 109 bbls. Rig up to swab. IFL 1000'. Made 13 runs and recovered 75 BLW and well kicked off flowing. Installed 3/4" choke. After flowing 45 minutes, FTP 45 psi, rate 705 MCFPD. Too wet to burn. Left open overnight.
- 11-28-79 Well flowed overnight, FTP 57 psi, 853 MCFPD. Released packer and lowered tubing to 3414' KB and left packer unset. Flowed well out casing 5 hrs, FCP 43 psi, TP 300 psi, rate 680 MCFPD, burned continuously. Left well open overnight.
- 11-29-79 Well flowed overnight, FCP 50 psi, TR 350 psi, rate 767 MCFPD. Bled well down, latch onto bridge plug at 3423' KB and pull out of hole. Rig up McCullough and set Baker Model "F" packer at 3420' KB. Ran Production tubing as follows:

	Baker Production tube	5.06'	
	Baker 1.78 "F" nipple	.96'	
	Sub 2 3/8"	6.05'	
	Seal Section	2.80'	
	Locator	.75'	
	Baker Model "L" sliding sleeve	2.65'	
108	jts 2 3/8" tubing	3360.53'	
	Sub 2 3/8"	8.18'	
	Sub 2 3/8"	4.10'	
	Sub 2 3/8"	4.10'	
	jt 2 3/8" tubing	30.69'	
<u>1</u>		<u>14.87'</u>	<u>3411.00'</u>
109		landed below KB	9.00'
		packer at	3420.00' KB

End of production tube at 3435' KB. Tubing landed with 8000 lbs on packer. Top of "F" nipple at 3429' KB. Top of sliding sleeve at 3417' KB. Nipple down BOP and nipple up tree. Rig up and pump out plug in "F" nipple. SI for night.

- 11-30-79 SICP and TP 665 psi. Pressures communicated. Flowed tubing (Pictured Cliffs) 7 hrs, thru 3/4" choke, FTP 68 psi, rate 989 MCFPD. Flowed casing (Fruitland) 7 hrs, thru 3/4" choke, FCP 7 psi, rate 235 MCFPD. Release rig and SI well.

- 12-1-79 SICP and TP 675 psi. Bled casing through 3/4" choke 1/2 hour, CP 130 psi, TP fell to 350 psi. Rig up to check that sleeve is closed. It was closed. Set blanking plug in "F" nipple.

Union Texas Petroleum
Johnston Federal #11-Y
SESW Section 2, T31N, R9W
San Juan County, New Mexico

Elledge Consulting & Production Company

COMPLETION SUMMARY CONTINUED

11-1-79 Sunday-Crew off

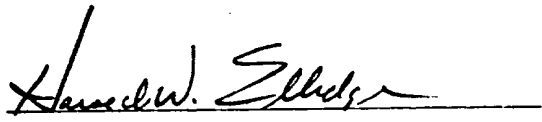
11-3-79 Move in pulling unit. CP 700 psi, TR 70 psi. Nipple up BOP. Pulled out of hole hot. SI for night.

12-4-79 SICP 650 psi. Ran final production tubing as follows:

	Baker production tube	5.06'	
	Baker 1.78" ID "F" nipple	.96'	
	Sub 2 3/8"	6.05'	
	Seal section	3.56'	
	Locator		.75'
	Sliding Sleeve		2.62'
1	jt 2 3/8" tubing		31.23'
	Blast jt.		19.84'
	Blast jt.		19.34'
106	jt 2 3/8" tubing		3301.78'
	Sub 2 3/8"		2.20'
	Sub 2 3/8"		4.10'
1	jt 2 3/8" tubing		29.14'
<u>108</u>	jts	<u>15.63'</u>	<u>3411.00'</u>
		landed below KB	9.00'
		packer at	3420.00' KB

Packer has 8000 lbs set on it. End of production tube at 3436' KB. Top of "F" nipple at 3430' KB. Top of sliding sleeve 3417' KB. Blast joint from 3385' to 3346'. Nipple down BOP, nipple up tree. SI for night.

12-5-79 Rig up and fish plug out of "F" nipple. Rig down rig. SICP 670 psi, SICP 692 psi. Flowed tubing 3 hrs thru 3/4" choke, FFP 100 psi, rate 1385 MCFPD. Casing pressure bled to 270 psi. SI pending orders.


Harold W. Elledge, P.E.
Petroleum Engineer

HWE/jr

BEFORE EXAMINER STAMETS OIL CONSERVATION COMMISSION
DATE <u>6</u>
CHECK NO. <u>6840</u>
Submitted by <u>Union Texas Pet</u>
Hearing Date <u>3-26-80</u>

U N I O N T E X A S P E T R O L E U M
J O H N S T O N F E D E R A L 11 - Y

P R O P O S E D A L L O C A T I O N F O R M U L A

The following is Union Texas Petroleum's proposal for an allocation formula for the Fruitland and Pictured Cliffs Formations in the captioned well. Should this formula be unacceptable to the New Mexico Oil Conservation Division, Union Texas Petroleum will gladly work with the state to establish a suitable formula.

NOTE: Royalty owners and working interest owners are common and equal for both formations.

It is proposed that allocation of production to the Fruitland Formation be based on observed Fruitland flowing rates during completion and observed Fruitland decline rates for several wells in the area.

1. Last observed Fruitland flow rate
on 11/26/79 - 173 MCFPD
2. Predicted Fruitland decline rate - 40% First Year
- 12% Thereafter
3. Proposed allocation by year (MCF/month) with the stipulation that Fruitland allocated production does not exceed 20% of the total commingled production.

<u>YEAR</u>	<u>FRUITLAND ALLOCATION MCF/MONTH</u>
1980 (1st Production June)	4659
1981	3252
1982	2740
1983	2411
1984	2122
1985	1867
1986	1643
1987	1446
1988	1273
1989	1120
1990	986
1991	867
1992	763
1993	672
1994	591
1995	520
1995 +	0

