

NO. OF COPIES RECEIVED	5
DISTRIBUTION	
SANTA FE	1
FILE	2
U.S.G.S.	1
LAND OFFICE	1
OPERATOR	

NEW MEXICO OIL CONSERVATION COMMISSION

30-043-23569
Form C-101
Revised 1-1-65

APPLICATION FOR PERMIT TO DRILL, DEEPEN, OR PLUG BACK

1a. Type of Work b. Type of Well OIL WELL <input type="checkbox"/> GAS WELL <input checked="" type="checkbox"/> OTHER <input type="checkbox"/> SINGLE ZONE <input checked="" type="checkbox"/> MULTIPLE ZONE <input type="checkbox"/>		DRILL <input checked="" type="checkbox"/> DEEPEN <input type="checkbox"/> PLUG BACK <input type="checkbox"/>	
2. Name of Operator AMOCO PRODUCTION COMPANY		7. Unit Agreement Name	
3. Address of Operator 501 Airport Drive Farmington, NM 87401		8. Farm or Lease Name Likins Gas Com "A"	
4. Location of Well UNIT LETTER J LOCATED 2040 FEET FROM THE South LINE AND 1790 FEET FROM THE East LINE OF SEC. 34 TWP. 30N RGE. 9W NMPM		9. Well No. 3E	
		10. Field and Pool, or Wildcat Basin Dakota	
		12. County San Juan	
		19. Proposed Depth 7000'	
		19A. Formation Dakota	
		20. Rotary or C.T. Rotary	
21. Elevations (Show whether DF, RT, etc.) 5716' GL		21A. Kind & Status Plug. Bond Statewide	
		21B. Drilling Contractor Unknown	
		22. Approx. Date Work will start 8/1/79	

23.

PROPOSED CASING AND CEMENT PROGRAM

SIZE OF HOLE	SIZE OF CASING	WEIGHT PER FOOT	SETTING DEPTH	SACKS OF CEMENT	EST. TOP
12-1/4"	8-5/8"	24#	300'	250 sx	Surface
7-7/8"	4-1/2"	10.5#	7000'	1760 sx	Surface

Amoco proposes to drill the above well to further develop the Basin Dakota reservoir. The well will then be drilled to the surface casing point using native mud. The well will then be drilled to TD with a low solids nondispersed mud system. Completion design will be based on open hole logs. Copy of all logs will be filed upon completion. Amoco's standard blow-out prevention will be employed; see attached drawing for blowout preventer design.

Upon completion the well location will be cleaned and the reserve pit filled and leveled.

Gas produced from this well is dedicated to El Paso Natural Gas Company.

An application for an unorthodox location has been filed with the Santa Fe office of the Oil Conservation Commission.

APPROVAL AND
FOR 90 DAYS UNLESS
DRILLING COMMENCED,

EXPIRES 8-27-79

IN ABOVE SPACE DESCRIBE PROPOSED PROGRAM: IF PROPOSAL IS TO DEEPEN OR PLUG BACK, GIVE DATA ON PRESENT PRODUCTIVE ZONE AND PROPOSED NEW PRODUCTIVE ZONE, GIVE BLOWOUT PREVENTER PROGRAM, IF ANY.

I hereby certify that the information above is true and complete to the best of my knowledge and belief.

Signed Frank S. Day Title District Engineer Date 5/25/79

(This space for State Use)

APPROVED BY Frank S. Day TITLE DEPUTY OIL & GAS INSPECTOR, DIST. #3 DATE MAY 29 1979

CONDITIONS OF APPROVAL, IF ANY:

Will be 10-1 to 10-1



OIL CONSERVATION DIVISION

STATE OF NEW MEXICO
ENERGY AND MINERALS DEPARTMENTP. O. BOX 2088
SANTA FE, NEW MEXICO 87501Form C-102
Revised 10-1-78

All distances must be from the outer boundaries of the Section.

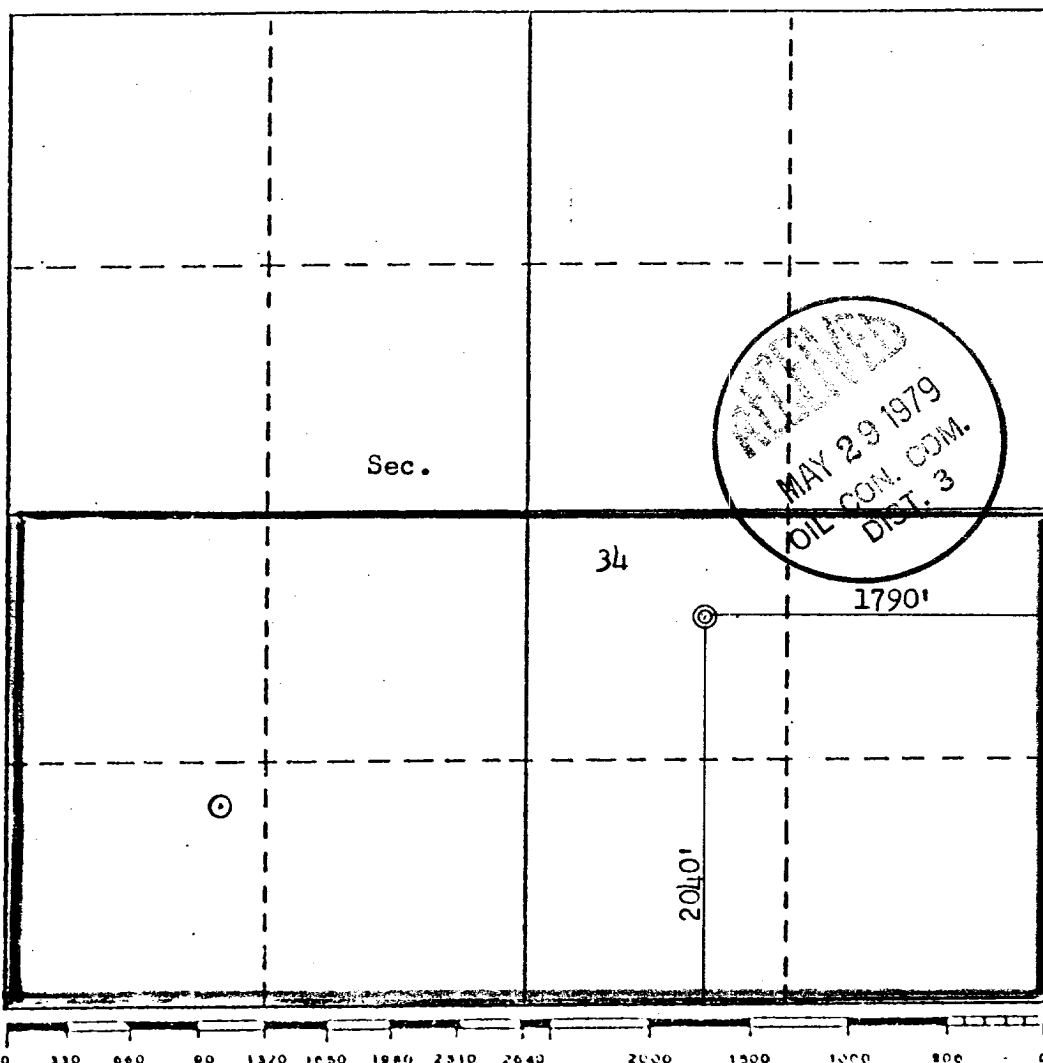
Operator AMOCO PRODUCTION COMPANY		Lease LIKINS GAS COM "A"		Well No. 3E	
Unit Letter J	Section 34	Township 30N	Range 9W	County San Juan	
Actual Footage Location of Well: 2040 feet from the South line and 1790 feet from the East line					
Ground Level Elev. 5716	Producing Formation Dakota		Pool Basin Dakota		Dedicated Acreage: 320 Acres

1. Outline the acreage dedicated to the subject well by colored pencil or hatchure marks on the plat below.
2. If more than one lease is dedicated to the well, outline each and identify the ownership thereof (both as to working interest and royalty).
3. If more than one lease of different ownership is dedicated to the well, have the interests of all owners been consolidated by communitization, unitization, force-pooling, etc?

☐ Yes ☐ No If answer is "yes," type of consolidation _____

If answer is "no," list the owners and tract descriptions which have actually been consolidated. (Use reverse side of this form if necessary.) _____

No allowable will be assigned to the well until all interests have been consolidated (by communitization, unitization, forced-pooling, or otherwise) or until a non-standard unit, eliminating such interests, has been approved by the Division.



CERTIFICATION

I hereby certify that the information contained herein is true and complete to the best of my knowledge and belief.

B. E. Fackrell

Name

B. E. FACKRELL

Position

DISTRICT ENGINEER

Company

AMOCO PRODUCTION COMPANY

Date

MAY 10, 1979

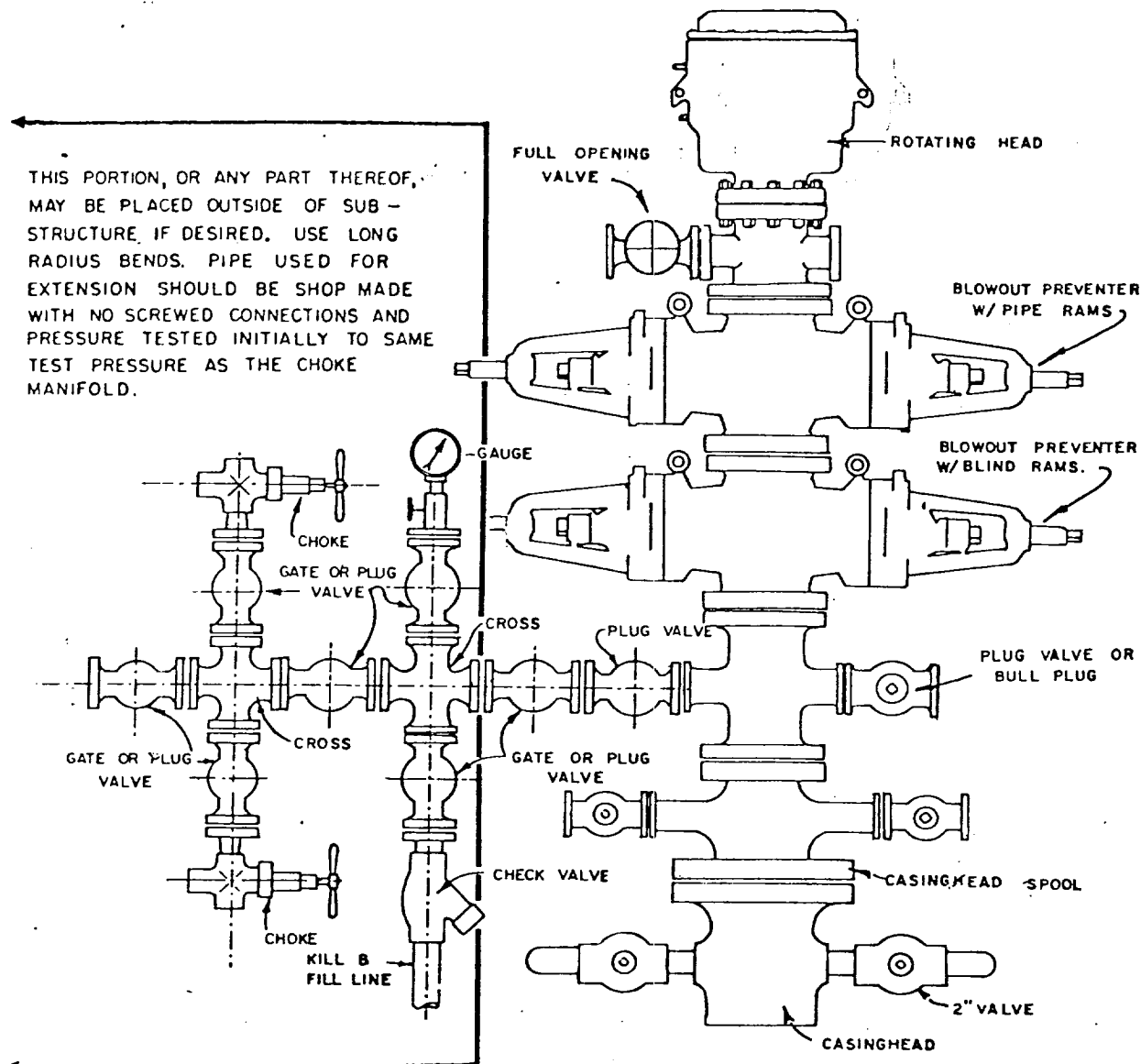
I hereby certify that the well location shown on this plat was plotted from field notes of actual surveys made by me or under my supervision, and that the same is true and correct to the best of my knowledge and belief.

Date Surveyed

May 7, 1979

Registered Professional Engineer
and/or Land Surveyor*Fred B. Kerr, Jr.*Certificate No. 3950
FRED B. KERR, JR.

THIS PORTION, OR ANY PART THEREOF, MAY BE PLACED OUTSIDE OF SUB-STRUCTURE, IF DESIRED. USE LONG RADIUS BENDS. PIPE USED FOR EXTENSION SHOULD BE SHOP MADE WITH NO SCREWED CONNECTIONS AND PRESSURE TESTED INITIALLY TO SAME TEST PRESSURE AS THE CHOKE MANIFOLD.



BLOWOUT PREVENTER HOOKUP