

NO. OF COPIES RECEIVED	
DISTRIBUTION	
SANTA FE	
FILE	
U.S.G.S.	
LAND OFFICE	
OPERATOR	

NEW MEXICO OIL CONSERVATION COMMISSION

Form C-103
Supersedes Old
C-102 and C-103
Effective 1-1-65

5a. Indicate Type of Lease	
State <input type="checkbox"/>	Fee <input checked="" type="checkbox"/>
5. State Oil & Gas Lease No.	

SUNDRY NOTICES AND REPORTS ON WELLS <small>(DO NOT USE THIS FORM FOR PROPOSALS TO DRILL OR TO DEEPEN OR PLUG BACK TO A DIFFERENT RESERVOIR. USE "APPLICATION FOR PERMIT -" (FORM C-101) FOR SUCH PROPOSALS.)</small>	
1. OIL WELL <input type="checkbox"/> GAS WELL <input checked="" type="checkbox"/> OTHER- <input type="checkbox"/>	7. Unit Agreement Name
2. Name of Operator Tenneco Oil Company	8. Farm or Lease Name Jacques
3. Address of Operator 720 So. Colorado Blvd., Denver, Colorado 80222	9. Well No. 3
4. Location of Well UNIT LETTER <u>E</u> , <u>1830</u> FEET FROM THE <u>North</u> LINE AND <u>1135</u> FEET FROM THE <u>West</u> LINE, SECTION <u>25</u> TOWNSHIP <u>30N</u> RANGE <u>9W</u> NMPM.	10. Field and Pool, or Wildcat Blanco P.C./Basin Dakota
15. Elevation (Show whether DF, RT, GR, etc.) 5664 GR	12. County San Juan

16. Check Appropriate Box To Indicate Nature of Notice, Report or Other Data	
NOTICE OF INTENTION TO:	SUBSEQUENT REPORT OF:
PERFORM REMEDIAL WORK <input type="checkbox"/> TEMPORARILY ABANDON <input type="checkbox"/> PULL OR ALTER CASING <input type="checkbox"/> OTHER <u>Complete in Multiple Zone</u> <input type="checkbox"/> <u>P.C./Dakota</u>	REMEDIAL WORK <input type="checkbox"/> COMMENCE DRILLING OPNS. <input type="checkbox"/> CASING TEST AND CEMENT JOB <input type="checkbox"/> OTHER <input type="checkbox"/> ALTERING CASING <input type="checkbox"/> PLUG AND ABANDONMENT <input type="checkbox"/>

17. Describe Proposed or Completed Operations (Clearly state all pertinent details, and give pertinent dates, including estimated date of starting any proposed work) SEE RULE 1103.

Drilling prognosis attached to application.



18. I hereby certify that the information above is true and complete to the best of my knowledge and belief.

SIGNED M. L. Freeman M. L. Freeman TITLE Staff Production Analyst DATE September 3, 1980

APPROVED BY Original Signed by FRANK T. CHAVEZ SUPERVISOR, DISTRICT 3 DATE SEP 5 1980

CONDITIONS OF APPROVAL, IF ANY:

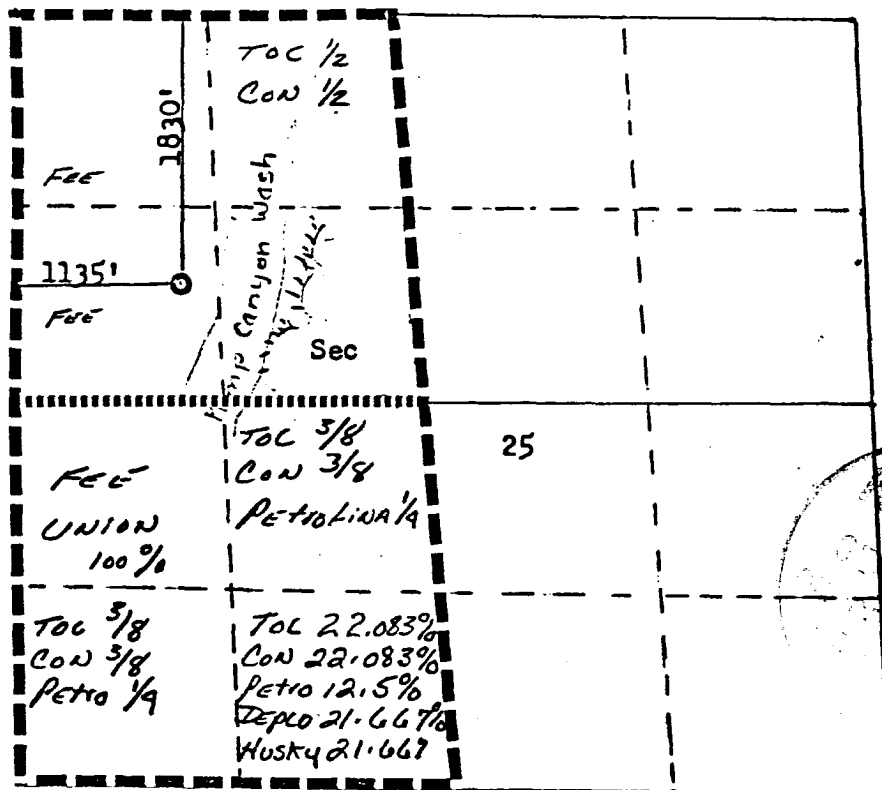
Form C-102
Supersedes C-128
Effective 1-1-65

Operator TENNECO OIL COMPANY		Lease JACQUES		Well No. 3
Unit Letter E	Section 25	Township 30N	Range 9W	County SAN JUAN
Actual Footage Location of Wells: 1830 feet from the North line and 1135 feet from the West line				
Ground Level Elev: 5664	Producing Formation Pictured Cliffs /Dakota	Pool Blanco Pictured Cliffs/Dakota	Basin Dedicated Acreage: 162.64/322.64 Acres	

- ☐ Yes ☒ No If answer is "yes," type of consolidation Communitization in progress.

If answer is "no," list the owners and tract descriptions which have actually been consolidated. (Use reverse side of this form if necessary.) _____

No allowable will be assigned to the well until all interests have been consolidated (by communitization, unitization, forced-pooling, or otherwise) or until a non-standard unit, eliminating such interests, has been approved by the Commission.



SCALE: 1"=1320'

I hereby certify that the information contained herein is true and complete to the best of my knowledge and belief.

W. H. Loomer

Name _____

M. L. Freeman

Position

Staff Production Analyst

Company

Tenneco Oil Company

Date _____

August 21, 1980

I hereby certify that the well location shown on this plat was plotted from field notes of actual surveys made by me or under my supervision, and that the same is true and correct to the best of my knowledge and belief.

Date Surveyed _____

March 25, 1979

Registered Professional Engineer
and Land Surveyor

Fred B. Kern, Jr.

Certificate No

3950.

TENNECO OIL COMPANY
ROCKY MOUNTAIN DIVISION
PENTHOUSE, 720 SOUTH COLORADO BOULEVARD
DENVER, COLORADO 80222

DRILLING PROCEDURE

DATE: November 19, 1979

LEASE: Jacquez

WELL NO.: 3

LOCATION: 1830' FNL, 1135' FWL
Sec. 25, T 30N, R 9W
San Juan County, New Mexico

FIELD: Basin Dakota

ELEVATION: 5680' Est. G.L. - 5691' Est. K.B.

TOTAL DEPTH: 7020'

PROJECTED HORIZON: PC/Dakota

SUBMITTED BY:

Df. Kardach

APPROVED BY:

John W. Allen

DK/ms

1st Rev.

ESTIMATED FORMATION TOPS

OJO Alamo	1160	(Water)
Pictured cliffs	2350	(Gas)
Lewis Shale	2530	
Cliffhouse	4025	(Gas)
Menefee	4215	(Gas)
Point Lookout	4610	(Gas)
Mancos		
Gallup	5920	(Oil)
Greenhorn	6565	
Dakota	6675	(Gas)
T.D.	7020	

Surface Formation: Nacimiento

No abnormal temperatures or pressures are expected.

1. MIRURT.
2. Drill a 12 3/4" hole to \pm 200'.
3. RU and run 9 5/8", 36#, K-55, ST&C casing.
4. Cement with 150 sx Class B + 2% CaCl₂. to circulate
5. WOC a minimum of 12 hours. Nipple up BOP's, choke manifold, and kill line. Pressure test rams, lines and casing to 600 psi for 30 minutes. Record test on IADC Drilling Report.
6. Drill an 8 3/4" hole \pm 500' into the Lewis Shale.
7. RU and run 7", 23#, K-55, ST&C casing to T.D.
8. Cement with sufficient volume to circulate cement to surface using 50/50 pozmix, 4% gel tailed by 150 sx of Class B + 2% CaCl₂. Precede cement with a chemical preflush.
9. WOC a minimum of 18 hours. Pick up 3 1/2" drill string and drill to within 5' of shoe. Displace water with N₂ and soap. Drill shoe and 5' of formation. Blow hole with gas until dusting.
10. Drill a 6 1/4" hole to T.D.
11. Log open hole as directed by G.E. Department.
12. RU and run 4 1/2", 10.5#/11.6#, K-55, LT&C liner to T.D. leaving 150' of overlap.
13. Set liner and cement with 50/50 pozmix, 2% gel tailed by 100 sx Class B. Use a chemical preflush ahead of cement.
14. Reverse out excess cement, LDDP and install X-mas tree.
15. MORT.
16. If well is non-productive, P & A as per regulatory agency specifications.

CASING PROGRAM

0-200	9 5/8", 36#, K-55 ST&C
0-3100	7", 23#, K-55, ST&C
2950-7020	(4070') 4 1/2", 10.5#, K-55, LT&C

MUD PROGRAM

0-200	Native solids. Have sufficient viscosity to clean hole and run casing.
200-3100	Benex and water. Have sufficient viscosity to run casing.
3100-T.D.	Gas.

EVALUATION

Cores and DST's:

No cores or DST's are anticipated.

Deviation Surveys:

1. Survey surface every 100'. Maximum allowable deviation at surface is 1°.
2. From surface to T.D., surveys must be taken every 500', or each trip, whichever is first. This may entail running the TOTCO on wireline. Record surveys on IADC Drilling Report. Maximum allowable change is 1° per 100'.

Samples:

10' samples 2450-3000'. Insure we have penetrated Lewis Shale 500'.

Logs:

GR/IND T.D. to Intd.

GR/FDC/CAL T.D. to Base M V

TDT 300' below PC to surface.

BLOWOUT EQUIPMENT

10", 3000 psi, double ram hydraulic operated with closing unit and 40 gallon accumulator.

10", 150 psi, rotating head and 7" blooie line.

REPORTS

Drilling reports for the past 24 hours will include depth, footage, time distribution, activity breakdown, mud properties, bit record, bottom hole assembly, daily and cumulative mud costs, plus any other pertinent information, will be called into Tenneco Oil Company, Denver, Colorado, between 7:30 a.m. and 8:00 a.m.

1. 303-758-7130 (office) Don Barnes.
303-758-7287 (office) Don Barnes' private line, Monday-Friday (before 7:45 a.m.)
2. 303-936-0704 (home) Don Barnes, weekends and holidays.
3. 303-795-0221 (home) John Owen, if Don Barnes is not available.

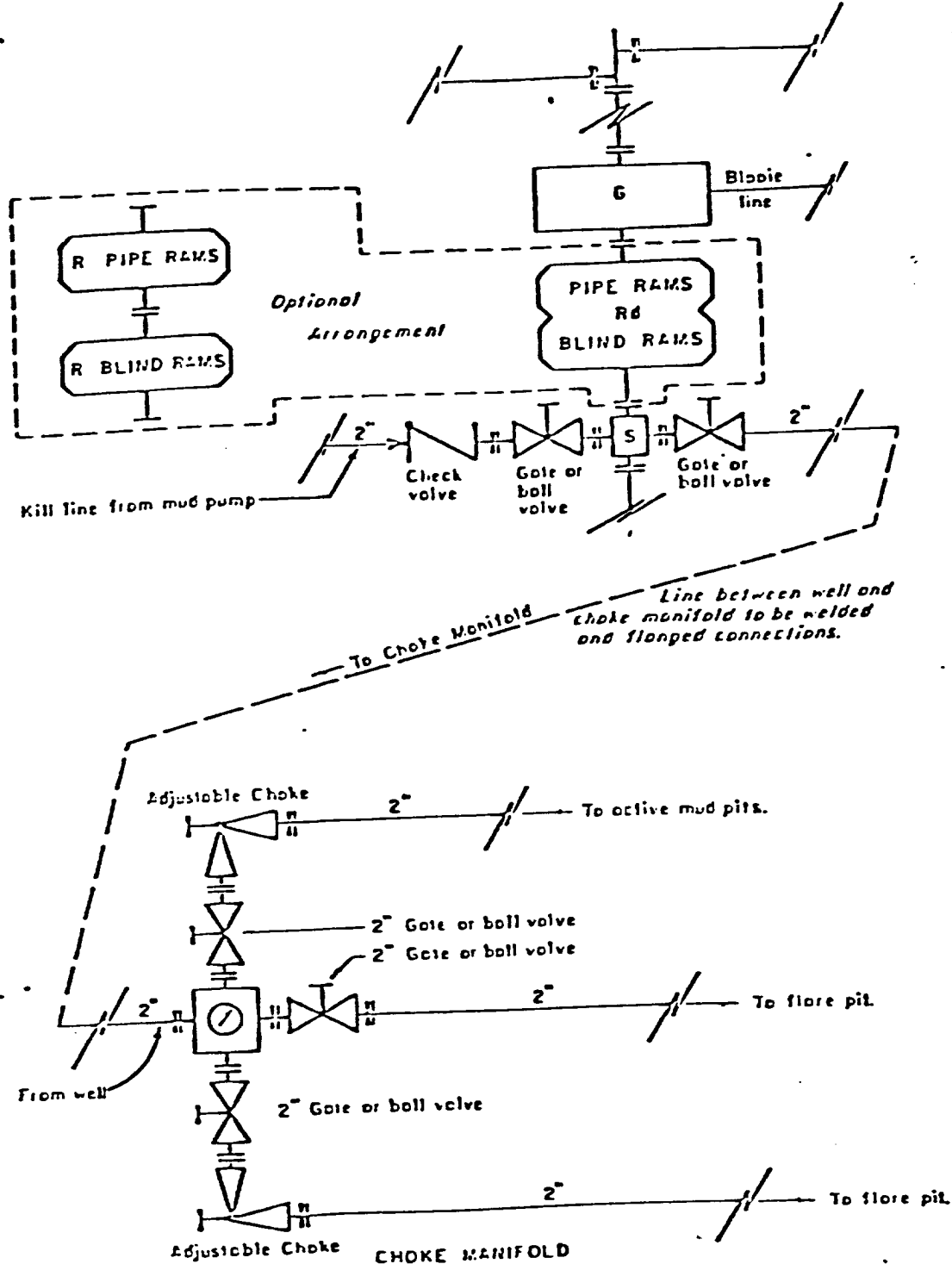
The yellow sheet of the IADC Report to be filled out completely, the original copy of the drilling time recorder, and copies of any invoices from this well, signed and received for Tenneco Oil Company will be mailed daily to:

TENNECO OIL COMPANY
ROCKY MOUNTAIN DIVISION
PENTHOUSE, 720 SOUTH COLORADO BOULEVARD
DENVER, COLORADO 80222

ATTENTION: Drilling Department

In case of emergency, notify the following:

1. Mr. Don Barnes, Division Drilling Engineer - 303-936-0704
2. Mr. John Owen, Project Drilling Engineer - 303-795-0221
3. Mr. Mike Lacey, Division Production Manager - 303-979-0509

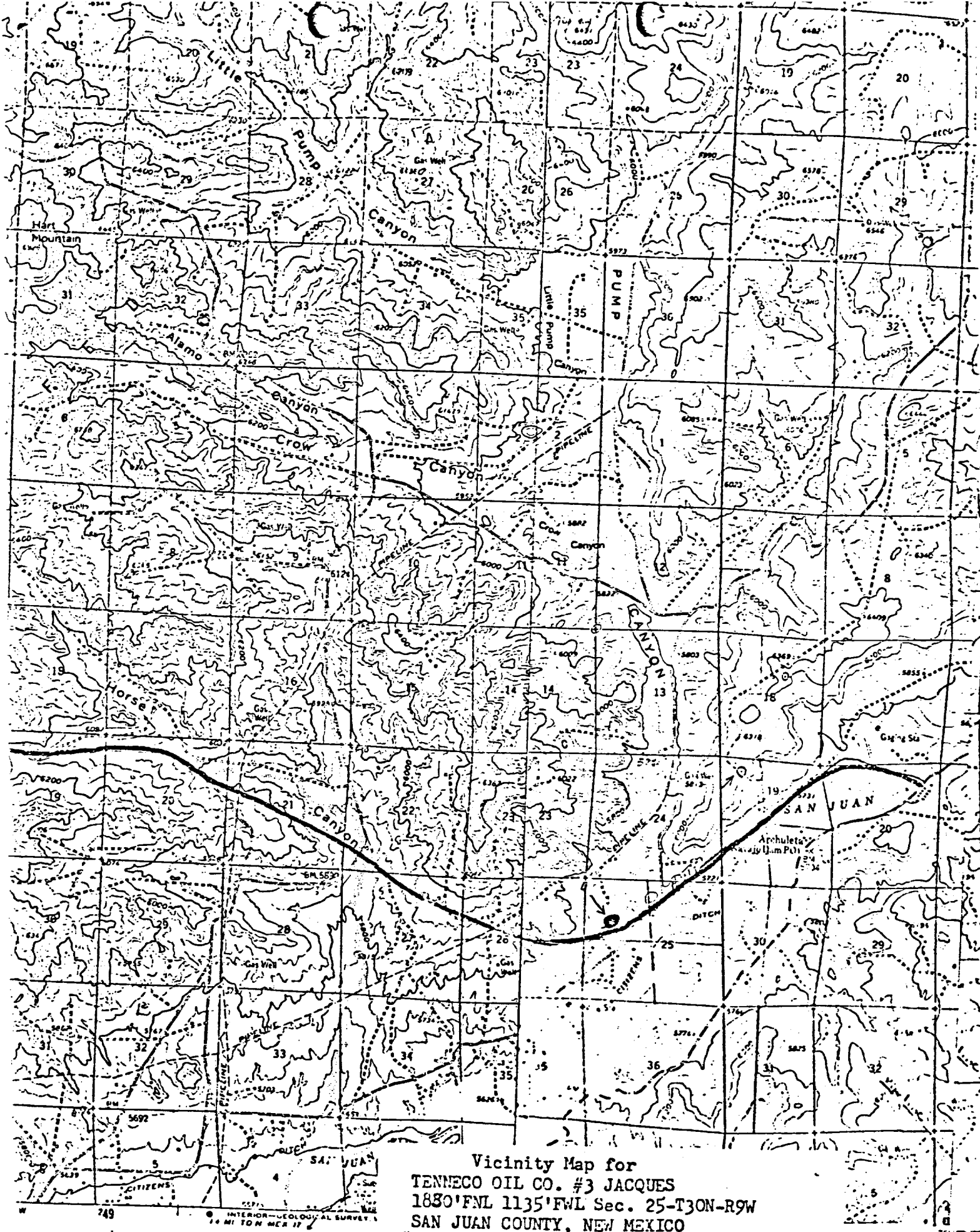


- All equipment to be 3,000 psi working pressure except as noted.
- Rd Double ram type preventer with two sets of rams.
 - R Single ram type preventer with one set of rams.
 - S Drilling spool with side outlet connections for choke and kill lines.
 - G Rotating head 150 psi working pressure minimum

ARRANGEMENT C

TENNECO OIL COMPANY
 ROCKY MOUNTAIN DIVISION
 REQUIRED MINIMUM
 BLOWOUT PREVENTER AND
 CHOKE MANIFOLD

J. MAGILL 10-26-70 EVI



Vicinity Map for
 TENNECO OIL CO. #3 JACQUES
 1830'FWL 1135'FWL Sec. 25-T30N-R9W
 SAN JUAN COUNTY, NEW MEXICO

INTERIOR-GEOLOGICAL SURVEY
 1:62,500

Copyright 1955 by the Geological Survey