

UNITED STATES
DEPARTMENT OF THE INTERIOR
GEOLOGICAL SURVEY30-085-23613
5. LEASE DESIGNATION AND SERIAL NO.

NM 0206994 SW-968

6. IF INDIAN, ALLOTTEE OR TRIBE NAME

7. UNIT AGREEMENT NAME

8. FARM OR LEASE NAME

Carpenter

9. WELL NO.

1E

10. FIELD AND POOL, OR WILDCAT

Basin Dakota

11. SEC., T., R., M., OR BLK.
AND SURVEY OR AREA

Section 25 T30N R14W

12. COUNTY OR PARISH

San Juan

13. STATE

NM

APPLICATION FOR PERMIT TO DRILL, DEEPEN, OR PLUG BACK

1a. TYPE OF WORK

DRILL ☒DEEPEN ☐PLUG BACK ☐

b. TYPE OF WELL

OIL
WELL ☐GAS
WELL ☒

OTHER

SINGLE
ZONE ☐MULTIPLE
ZONE ☐

2. NAME OF OPERATOR

Dugan Production Corp.

3. ADDRESS OF OPERATOR

Box 234, Farmington, NM 87401

4. LOCATION OF WELL (Report location clearly and in accordance with any State requirements.)

At surface

F 1850' FNL - 1480' FWL
At proposed prod. zoneJUN 19 1979
OIL CON. COM.
DIST. 3

14. DISTANCE IN MILES AND DIRECTION FROM NEAREST TOWN OR POST OFFICE*

8 miles NW of Farmington

15. DISTANCE FROM PROPOSED*

LOCATION TO NEAREST
PROPERTY OR LEASE LINE, FT.
(Also to nearest drlg. unit line, if any)

1480'

16. NO. OF ACRES IN LEASE

320.36

17. NO. OF ACRES ASSIGNED

TO THIS WELL

w/320.36

18. DISTANCE FROM PROPOSED LOCATION*

TO NEAREST WELL, DRILLING, COMPLETED,
OR APPLIED FOR, ON THIS LEASE, FT.

1680'

19. PROPOSED DEPTH

6150'

20. ROTARY OR CABLE TOOLS

Rotary

21. ELEVATIONS (Show whether DF, RT, GR, etc.)

5495' GR

22. APPROX. DATE WORK WILL START*

July 4, 1979

23.

PROPOSED CASING AND CEMENTING PROGRAM

SIZE OF HOLE	SIZE OF CASING	WEIGHT PER FOOT	SETTING DEPTH	QUANTITY OF CEMENT
12-1/2"	8-5/8"	24#	180'	150 sx
7-7/8"	4-1/2"	10.5#	6100'	700 sx in two stages

Plan to drill with mud to test producing formation. If productive, will set 4-1/2" casing, selectively perforate, frac, clean out after frac, run 1-1/4" tubing, and complete well.

Plan to use BOP furnished by rig while drilling (10" 3000 psi hydraulic)

Plan to use BOP rental while completing (6" 3000 psi double gate manual)

NMRB: Gas Dedicated to El Paso

JUN 18 1979
U. S. GEOLOGICAL SURVEY
FARMINGTON, NM

IN ABOVE SPACE DESCRIBE PROPOSED PROGRAM: If proposal is to deepen or plug back, give data on present productive zone and proposed new productive zone. If proposal is to drill or deepen directionally, give pertinent data on subsurface locations and measured and true vertical depths. Give blowout preventer program if any.

24.

SIGNED

Thomas A. Dugan

TITLE

Petroleum Engineer

DATE

6-14-79

(This space for Federal or State office use)

PERMIT NO.

APPROVAL DATE

APPROVED BY

TITLE

DATE

CONDITIONS OF APPROVAL, IF ANY:

ok Frank

NMRB

*See Instructions On Reverse Side

**NEW MEXICO OIL CONSERVATION COMMISSION
WELL LOCATION AND ACREAGE DEDICATION PLAT**

Form C-102
Supersedes C-122
Effective 1-1-65

All distances must be from the outer boundaries of the Section.

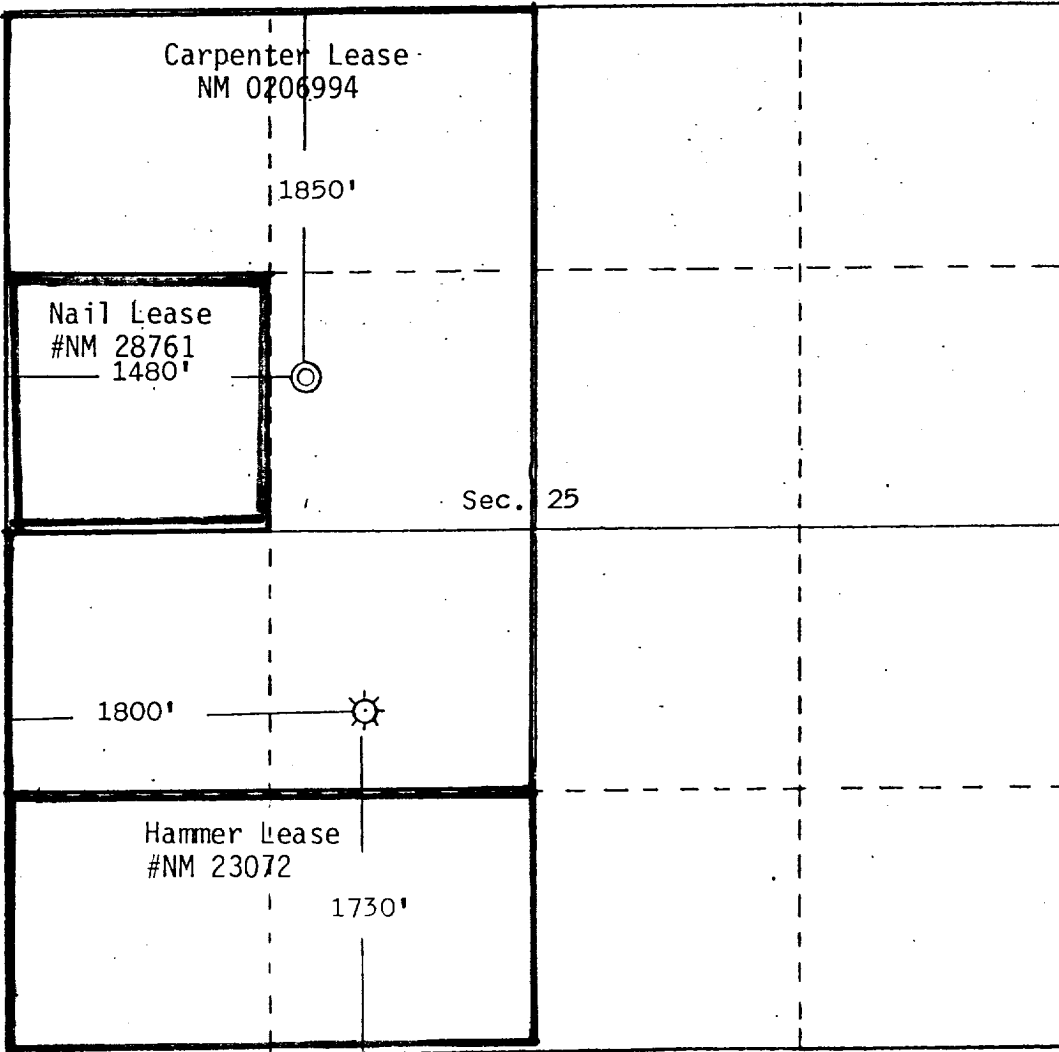
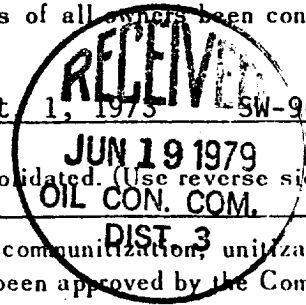
Operator Dugan Production Corporation			Lease Carpenter		Well No. #1E
Unit Letter F	Section 25	Township 30 North	Range 14 West	County San Juan	
Actual Footage Location of Well:					
1850 feet from the North line and		1480 feet from the West line			
Ground Level Elev. 5495	Producing Formation Dakota	Pool Basin Dakota		Dedicated Acreage: 320.36 Acres	

1. Outline the acreage dedicated to the subject well by colored pencil or hachure marks on the plat below.
2. If more than one lease is dedicated to the well, outline each and identify the ownership thereof (both as to working interest and royalty).
3. If more than one lease of different ownership is dedicated to the well, have the interests of all owners been consolidated by communitization, unitization, force-pooling, etc?

☒ Yes ☐ No If answer is "yes," type of consolidation Communitized Sept 1, 1973 SW-968

If answer is "no," list the owners and tract descriptions which have actually been consolidated. (Use reverse side of this form if necessary.) _____

No allowable will be assigned to the well until all interests have been consolidated (by communitization, unitization, forced-pooling, or otherwise) or until a non-standard unit, eliminating such interests, has been approved by the Commission.



CERTIFICATION

I hereby certify that the information contained herein is true and complete to the best of my knowledge and belief.

Thomas A. Dugan

Name
Thomas A. Dugan
Position
Petroleum Engineer
Company
Dugan Production Corp.
Date
6-14-79

I hereby certify that the well location shown on this plat was plotted from field notes of actual surveys made by me or under my supervision, and that the same is true and correct to the best of my knowledge and belief.

Date Surveyed
June 7, 1979
Registered Professional Engineer and/or Land Surveyor
Edgar L. Risenhoover
Certificate No. **5979**
Edgar L. Risenhoover, L.S.