

NO. OF COPIES RECEIVED	5
DISTRIBUTION	
SANTA FE	1
FILE	1
U.S.G.S.	2
LAND OFFICE	1
OPERATOR	1

NEW MEXICO OIL CONSERVATION COMMISSION

30-45-23737
Form C-101
Revised 1-1-65

APPLICATION FOR PERMIT TO DRILL, DEEPEN, OR PLUG BACK

1a. Type of Work

b. Type of Well DRILL ☒ DEEPEN ☐ PLUG BACK ☐
OIL WELL ☐ GAS WELL ☒ OTHER Infill SINGLE ZONE ☒ MULTIPLE ZONE ☐

2. Name of Operator

AMOCO PRODUCTION COMPANY

3. Address of Operator

501 Airport Drive, Farmington, New Mexico 87401

4. Location of Well

UNIT LETTER G LOCATED 1850 FEET FROM THE North LINE

AND 1470 FEET FROM THE East LINE OF SEC. 30 TWP. 30N RGE. 12W NMPM

21. Elevations (Show whether DF, RT, etc.)

5622' GL

21A. Kind & Status Plug. Bond

Statewide

19. Proposed Depth

6500'

19A. Formation

Dakota

20. Rotary or C.T.

Rotary

21B. Drilling Contractor

Unknown

22. Approx. Date Work will start

10/3/79

PROPOSED CASING AND CEMENT PROGRAM

SIZE OF HOLE	SIZE OF CASING	WEIGHT PER FOOT	SETTING DEPTH	SACKS OF CEMENT	EST. TOP
12-1/4"	8-5/8"	24 #	300'	315 sx.	Surface
7-7/8"	4-1/2"	11.6 #	6500'	1900 sx.	Surface

Amoco proposes to drill the above well to further develop the Basin Dakota reservoir. The well will be drilled to the surface casing point using native mud. The well will then be drilled to TD with a low solids nondispersed mud system. Completion design will be based on open hole logs. Copy of all logs will be filed upon completion. Amoco's standard blowout prevention will be employed; see attached drawing for blowout preventer design.

Upon completion the well location will be cleaned and the reserve pit filled and leveled.

Gas produced from this well is dedicated to El Paso Natural Gas Co.

APPROVAL AND
FOR RECORD PURPOSES
DRILLING CONTRACTOR

EXPIRES 11-19-79

ABOVE SPACE DESCRIBE PROPOSED PROGRAM: IF PROPOSAL IS TO DEEPEN OR PLUG BACK, GIVE DATA ON PRESENT PRODUCTIVE ZONE AND PROPOSED NEW PRODUCTIVE ZONE. GIVE BLOWOUT PREVENTER PROGRAM, IF ANY.

I hereby certify that the information above is true and complete to the best of my knowledge and belief.

Signed B. E. FAHRENHUT Title District Engineer Date August 17, 1979

(This space for State Use)

PROVED BY Frank T. Chang TITLE DEPUTY COMMISSIONER DATE AUG 21 1979

CONDITIONS OF APPROVAL, IF ANY:

All distances must be from the outer boundaries of the Section.

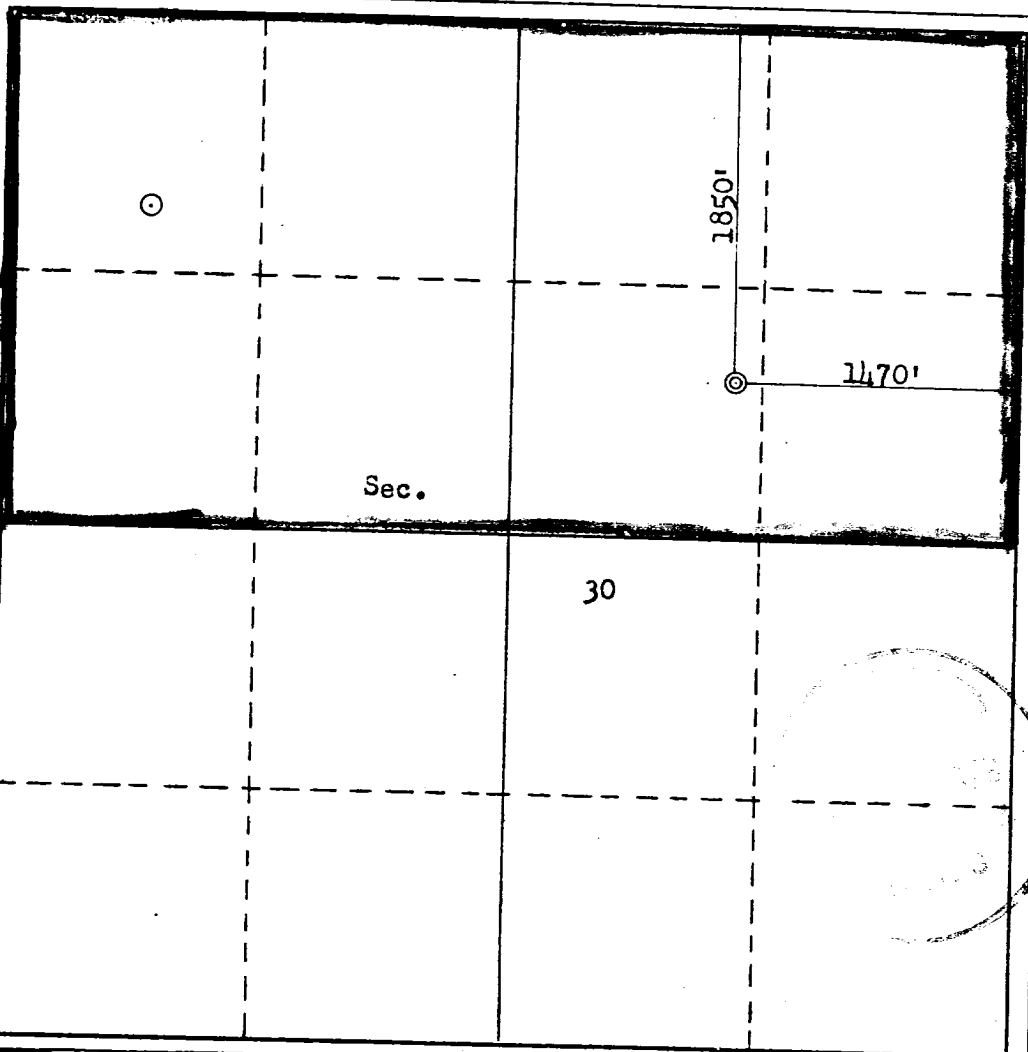
Operator AMOCO PRODUCTION COMPANY			Lease FEDERAL GAS COM "D"		Well No. 1 E
Unit Letter G	Section 30	Township 30N	Range 12W	County San Juan	
Actual Footage Location of Well: 1850 feet from the North line and 1470 feet from the East line					
Ground Level Elev. 5622	Producing Formation Dakota		Pool Basin Dakota	Dedicated Acreage: 318.28 Acres	

1. Outline the acreage dedicated to the subject well by colored pencil or hachure marks on the plat below.
2. If more than one lease is dedicated to the well, outline each and identify the ownership thereof (both as to working interest and royalty).
3. If more than one lease of different ownership is dedicated to the well, have the interests of all owners been consolidated by communitization, unitization, force-pooling, etc?

☒ Yes ☐ No If answer is "yes," type of consolidation Communitization

If answer is "no," list the owners and tract descriptions which have actually been consolidated. (Use reverse side of this form if necessary.)

No allowable will be assigned to the well until all interests have been consolidated (by communitization, unitization, forced-pooling, or otherwise) or until a non-standard unit, eliminating such interests, has been approved by the Commission.



CERTIFICATION

I hereby certify that the information contained herein is true and complete to the best of my knowledge and belief.

B. E. Fackrell

Name
B. E. FACKRELL

Position
DISTRICT ENGINEER

Company
AMOCO PRODUCTION COMPANY

Date
AUGUST 14, 1979

I hereby certify that the well location shown on this plat was plotted from field notes of actual surveys made by me or under my supervision, and that the same is true and correct to the best of my knowledge and belief.

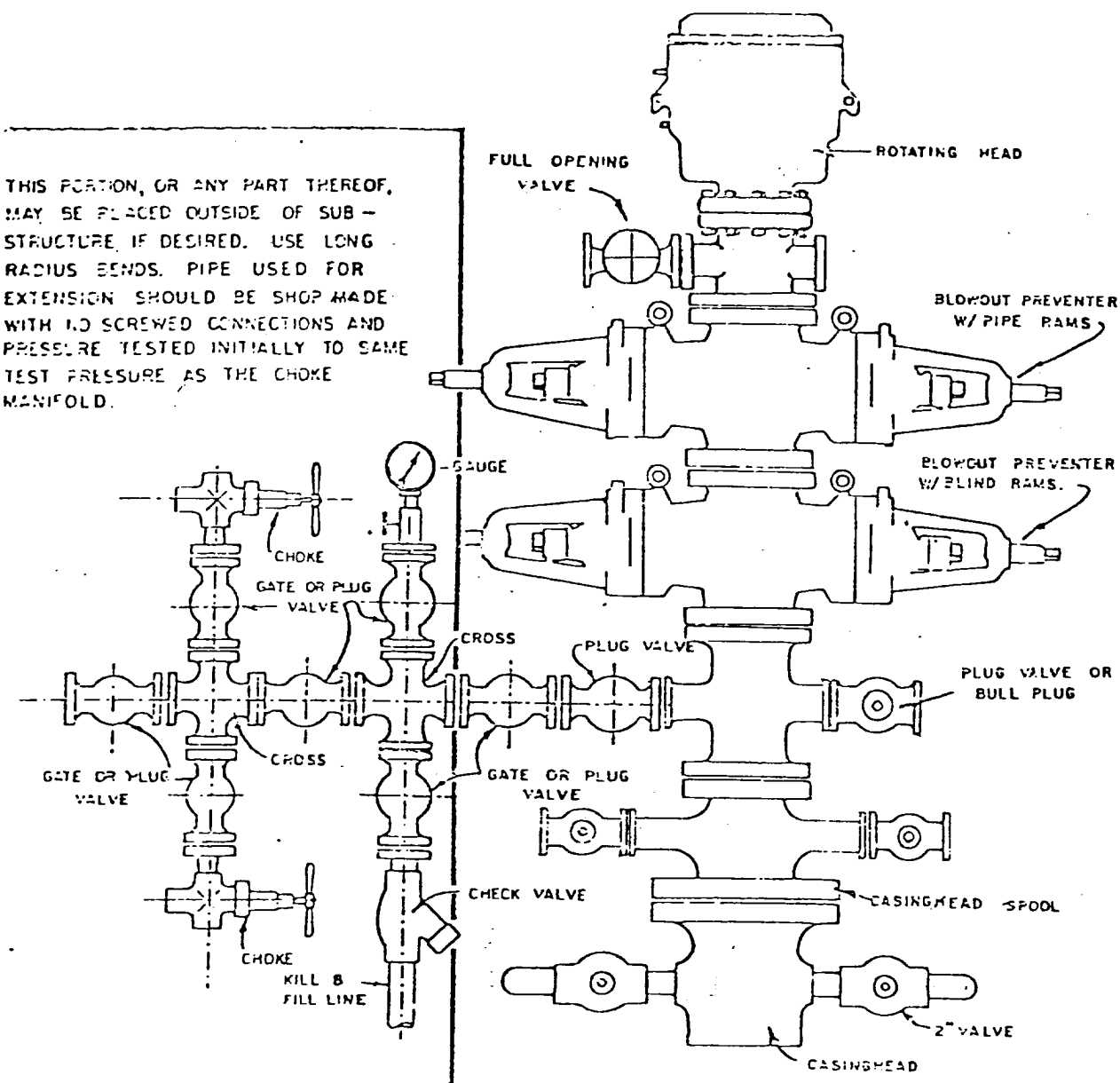
Date Surveyed
August 8, 1979

Registered Professional Engineer and/or Land Surveyor

Fred S. Kerr Jr.
Fred S. Kerr Jr.

Certificate No.
3950

THIS PORTION, OR ANY PART THEREOF, MAY BE PLACED OUTSIDE OF SUB-STRUCTURE, IF DESIRED. USE LONG RADIUS BENDS. PIPE USED FOR EXTENSION SHOULD BE SHOP MADE WITH NO SCREWED CONNECTIONS AND PRESSURE TESTED INITIALLY TO SAME TEST PRESSURE AS THE CHOKER MANIFOLD.



BLOWOUT PREVENTER HOOKUP