

NO. OF COPIES RECEIVED	5
DISTRIBUTION	
SANTA FE	1
FILE	1
U.S.G.S.	2
LAND OFFICE	
OPERATOR	1

NEW MEXICO OIL CONSERVATION COMMISSION

30-095-93882
Form C-101
Revised 1-1-65

5A. Indicate Type of Lease	
STATE <input type="checkbox"/>	FEE <input checked="" type="checkbox"/>
5. State Oil & Gas Lease No.	

APPLICATION FOR PERMIT TO DRILL, DEEPEN, OR PLUG BACK

1a. Type of Work	
b. Type of Well OIL WELL <input type="checkbox"/> GAS WELL <input checked="" type="checkbox"/> OTHER <input type="checkbox"/> Infill	
2. Name of Operator AMOCO PRODUCTION COMPANY	
3. Address of Operator 501 Airport Drive, Farmington, New Mexico 87401	
4. Location of Well UNIT LETTER I LOCATED 2020' FEET FROM THE South LINE AND 670' FEET FROM THE East LINE OF SEC. 30 TWP. 30N RGE. 12W NMPM	
19. Proposed Depth 6402'	
19A. Formation Dakota	
20. Rotary or C.T. Rotary	
21. Elevations (Show whether DF, RT, etc.) 5565' GL	
21A. Kind & Status Plug. Bond Statewide	
21B. Drilling Contractor Unknown	
22. Approx. Date Work will start 11/25/79	

7. Unit Agreement Name	
8. Farm or Lease Name Federal Gas Com "E"	
9. Well No. 1E	
10. Field and Pool, or Wildcat Basin Dakota	
12. County San Juan	

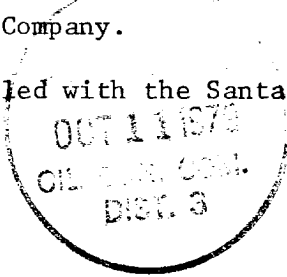
PROPOSED CASING AND CEMENT PROGRAM					
SIZE OF HOLE	SIZE OF CASING	WEIGHT PER FOOT	SETTING DEPTH	SACKS OF CEMENT	EST. TOP
12-1/4"	8-5/8"	24 #	300'	315 sx.	Surface
7-7/8"	4-1/2"	10.5 #	6402'	1665 sx.	Surface

Amoco proposes to drill the above well to further develop the Basin Dakota reservoir. The well will be drilled to the surface casing point using native mud. The well will then be drilled to TD with a low solids nondispersed mud system. Completion design will be based on open hole logs. Copy of all logs will be filed upon completion. Amoco's standard blowout prevention will be employed; see attached drawing for blowout preventer design. Upon completion the well location will be cleaned and the reserve pit filled and leveled.

Gas produced from this well is dedicated to El Paso Natural Gas Company.

An unorthodox location application is in the process of being filed with the Santa Fe Office.

APPROVED FOR 90 DAY PERIOD
FOR 90 DAY PERIOD
EXPIRES 1-9-80



IN ABOVE SPACE DESCRIBE PROPOSED PROGRAM: IF PROPOSAL IS TO DEEPEN OR PLUG BACK, GIVE DATA ON PRESENT PRODUCTIVE ZONE AND PROPOSED NEW PRODUCTIVE ZONE. GIVE BLOWOUT PREVENTER PROGRAM, IF ANY.

I hereby certify that the information above is true and complete to the best of my knowledge and belief.

Signed B.E. Fackrell Title District Engineer Date October 8, 1979

(This space for State Use)

APPROVED BY Frank J. Chang TITLE DEPUTY OIL & GAS INSPECTOR, DIST. 3 DATE OCT 11 1979

CONDITIONS OF APPROVAL, IF ANY:

All distances must be from the outer boundaries of the Section.

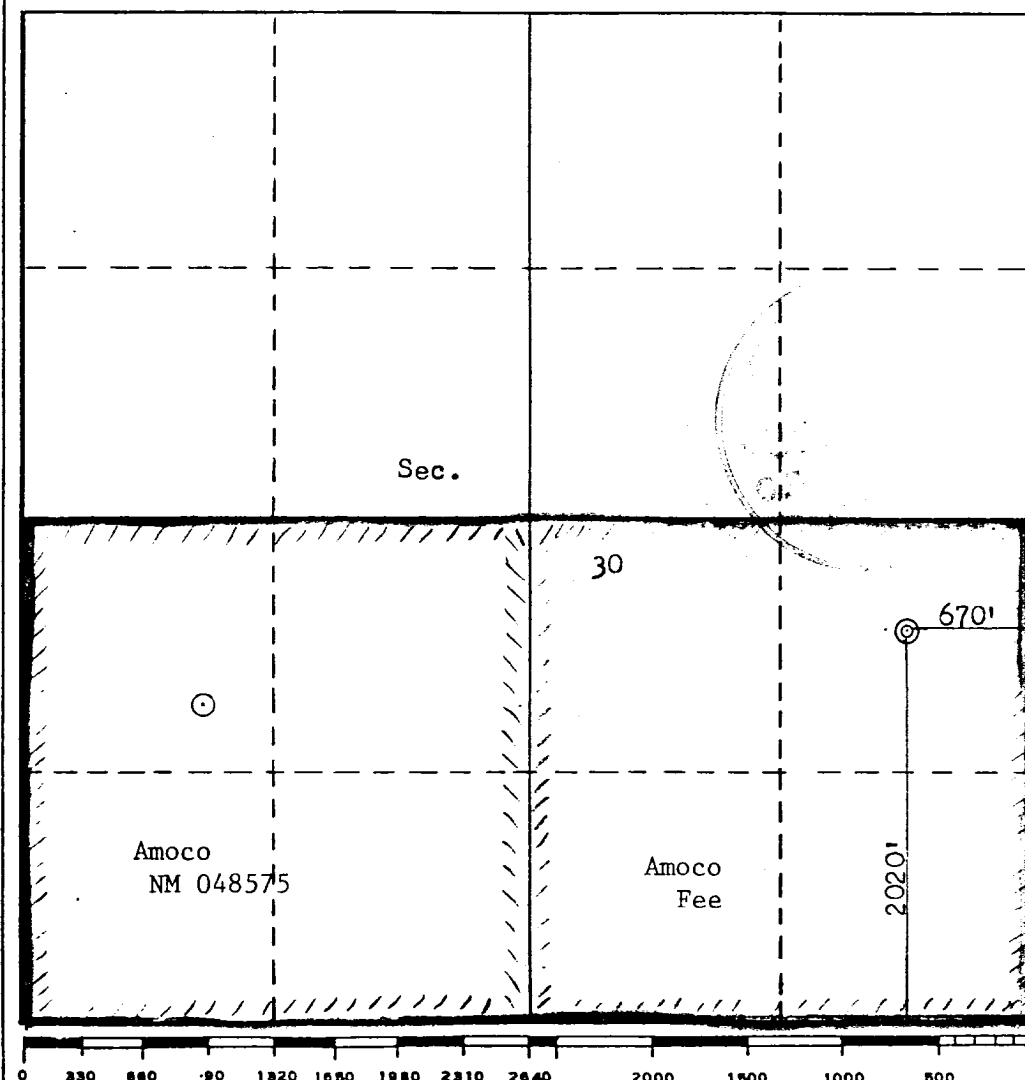
Operator AMOCO PRODUCTION COMPANY			Lease FEDERAL GAS COM "E"		Well No. 1-E
Unit Letter I	Section 30	Township 30N	Range 12W	County San Juan	
Actual Footage Location of Well: 2020 feet from the South line and 670 feet from the East line					
Ground Level Elev. 5565	Producing Formation Dakota		Pool Basin Dakota		Dedicated Acreage: 318.04 Acres

1. Outline the acreage dedicated to the subject well by colored pencil or hatchure marks on the plat below.
2. If more than one lease is dedicated to the well, outline each and identify the ownership thereof (both as to working interest and royalty).
3. If more than one lease of different ownership is dedicated to the well, have the interests of all owners been consolidated by communitization, unitization, force-pooling, etc?

☒ Yes ☐ No If answer is "yes," type of consolidation Communitization

If answer is "no," list the owners and tract descriptions which have actually been consolidated. (Use reverse side of this form if necessary.) _____

No allowable will be assigned to the well until all interests have been consolidated (by communitization, unitization, forced-pooling, or otherwise) or until a non-standard unit, eliminating such interests, has been approved by the Commission.



CERTIFICATION

I hereby certify that the information contained herein is true and complete to the best of my knowledge and belief:

B. E. Fackrell

Name

B. E. Fackrell

Position

DISTRICT ENGINEER

Company

AMOCO PRODUCTION COMPANY

Date

OCTOBER 3, 1979

I hereby certify that the well location shown on this plat was plotted from field notes of actual surveys made by me or under my supervision, and that the same is true and correct to the best of my knowledge and belief.

Date Surveyed

October 2, 1979

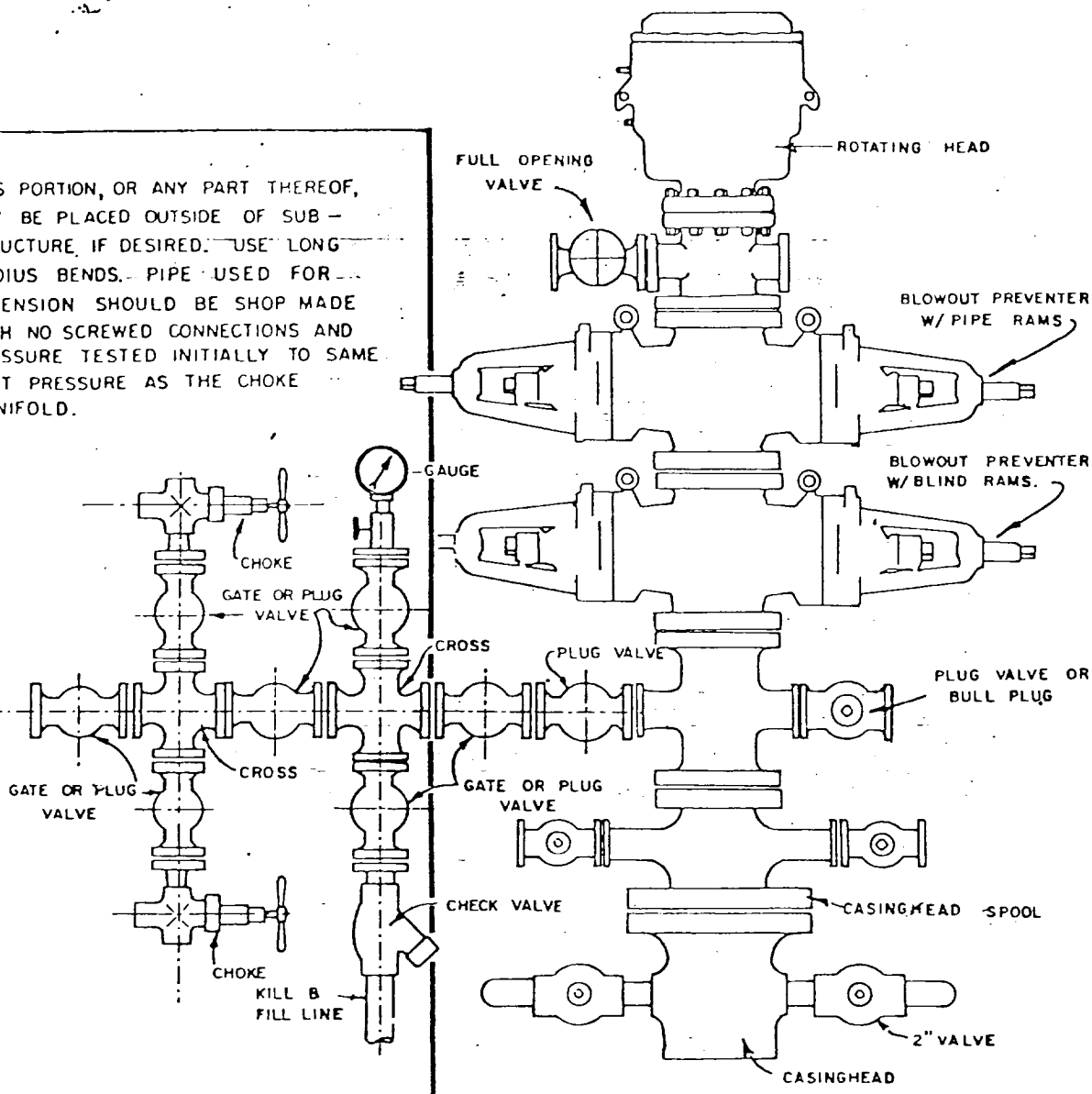
Registered Professional Engineer and/or Land Surveyor

Fred R. Kerr, Jr.

Certificate No.

3950

THIS PORTION, OR ANY PART THEREOF, MAY BE PLACED OUTSIDE OF SUB-STRUCTURE, IF DESIRED. USE LONG RADIUS BENDS. PIPE USED FOR EXTENSION SHOULD BE SHOP MADE WITH NO SCREWED CONNECTIONS AND PRESSURE TESTED INITIALLY TO SAME TEST PRESSURE AS THE CHOKE MANIFOLD.



BLOWOUT PREVENTER HOOKUP

EXHIBIT D-4
OCTOBER 16, 1969