

NO. OF COPIES RECEIVED	5
DISTRIBUTION	
SANTA FE	1
FILE	1
U.S.G.S.	2
LAND OFFICE	
OPERATOR	1

NEW MEXICO OIL CONSERVATION COMMISSION

Form C-101
Revised 1-1-65

5A. Indicate Type of Lease	
STATE <input type="checkbox"/>	FEE <input checked="" type="checkbox"/>
5. State Oil & Gas Lease No.	

APPLICATION FOR PERMIT TO DRILL, DEEPEN, OR PLUG BACK

1a. Type of Work		7. Unit Agreement Name	
b. Type of Well OIL WELL <input type="checkbox"/> GAS WELL <input checked="" type="checkbox"/> OTHER <input type="checkbox"/>		8. Farm or Lease Name Haynie	
2. Name of Operator SUPRON ENERGY CORPORATION		9. Well No. 2	
3. Address of Operator P.O. Box 808, Farmington, New Mexico 87401		10. Field and Pool, or Wellcat Blanco Mesaverde Basin Dakota	
4. Location of Well UNIT LETTER B LOCATED 820 FEET FROM THE NORTH LINE AND 1700 FEET FROM THE EAST LINE OF SEC. 4 TWP. 30N RGE. 11W NMPM		12. County San Juan	
19. Proposed Depth 6840'		19A. Formation Dakota	
20. Rotary or C.T. Rotary		21. Elevations (Show whether DF, RT, etc.) 5608 GR.	
21A. Kind & Status Plug. Bond Blanket		21B. Drilling Contractor Brinkerhoff - Signal	
22. Approx. Date Work will start April 1, 1980			

23.

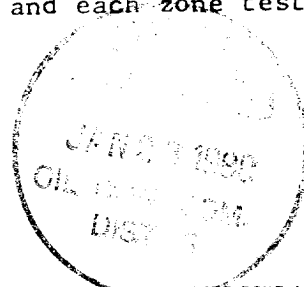
PROPOSED CASING AND CEMENT PROGRAM

SIZE OF HOLE	SIZE OF CASING	WEIGHT PER FOOT	SETTING DEPTH	SACKS OF CEMENT	EST. TOP
12-1/4"	8-5/8"	24.00	300'	250	Circ.
7-7/8"	5-1/2"	15.50	6840'	3 Stage	650 Sx.
					Est. Top - 600'

We desire to drill this well to T.D. of approximately 6850' using mud as a circulating medium. It is intended to dually complete this well in the Basin Dakota and the Blanco Mesaverde pools and formations. The well will then be completed in each zone and a production packer set between production zones at approximately 5800 ft. The Dakota tbq. will be strung into the production packer. A separate tbq. string will be landed at approximately 4800 ft. The packer will be tested for leakage and each zone tested separately.

APPROVAL VALID
FOR 90 DAYS UNLESS
DRILLING COMMENCED,

EXPIRES 4-22-80



IN ABOVE SPACE DESCRIBE PROPOSED PROGRAM: IF PROPOSAL IS TO DEEPEN OR PLUG BACK, GIVE DATA ON PRESENT PRODUCTIVE ZONE AND PROPOSED NEW PRODUCTIVE ZONE. GIVE BLOWOUT PREVENTER PROGRAM, IF ANY.

I hereby certify that the information above is true and complete to the best of my knowledge and belief.

Signed Rudy D. Mott Title Area Superintendent Date January 21, 1980
(This space for State Use)

APPROVED BY Steve S. Chay TITLE SUPERVISOR DISTRICT # 3 DATE JAN 21 1980
CONDITIONS OF APPROVAL, IF ANY:

NEW MEXICO OIL CONSERVATION COMMISSION
WELL LOCATION AND ACREAGE DEDICATION PLAT

Form O-101
Supersedes O-128
Effective 1-1-61

All distances must be from the outer boundaries of the Section.

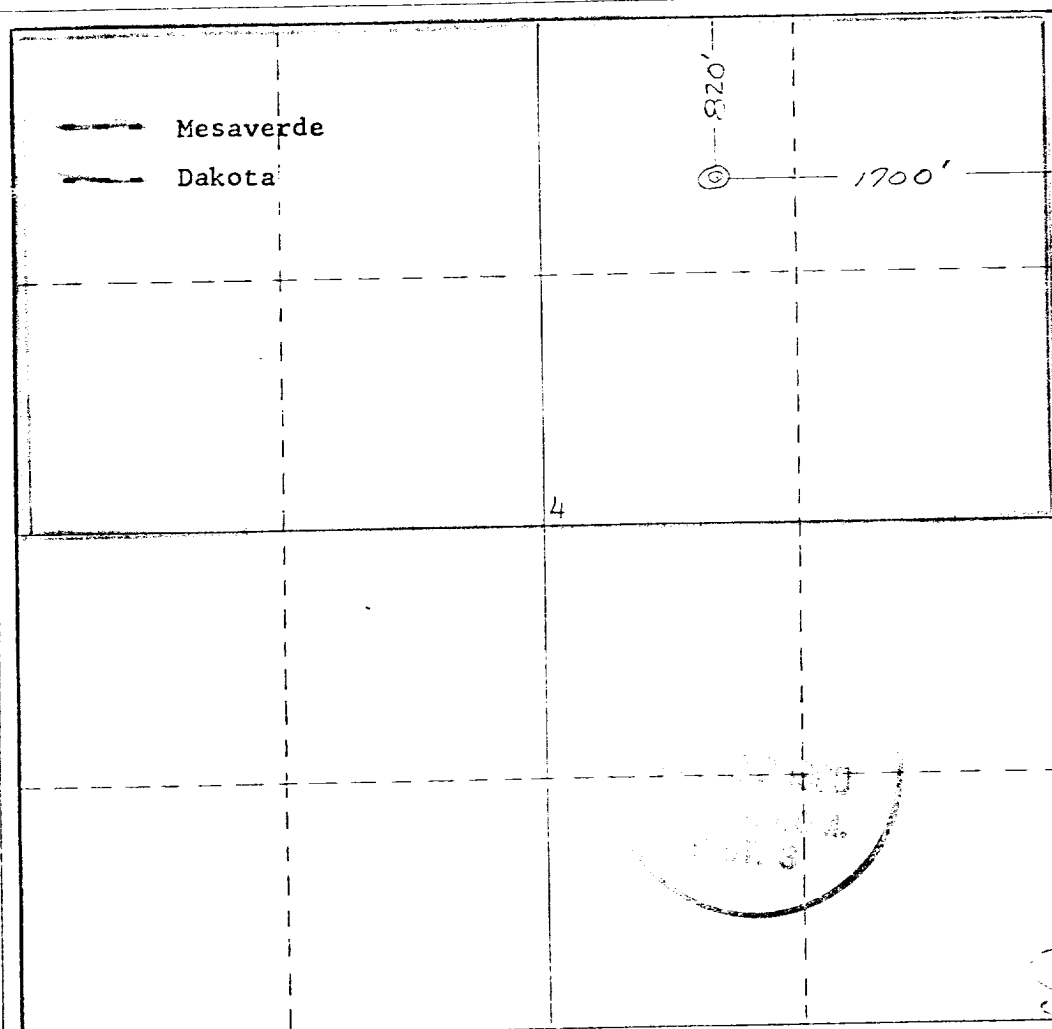
Operator: SUPRON ENERGY CORPORATION			Lease: HAYNIE		Well No.: #2
Unit Letter: B	Section: 4	Township: 30 NORTH	Range: 11 WEST	County: SAN JUAN	
Actual Footage Location of Well: 820 feet from the NORTH line and 1700 feet from the EAST line					
Ground Level Elev.: 5408	Producing Formation: MESAVERDE DAKOTA		Pool: BLANCO BASIN	Dedicated Acreage: N/2 307.457 Acres	

1. Outline the acreage dedicated to the subject well by colored pencil or hatchure marks on the plat below.
2. If more than one lease is dedicated to the well, outline each and identify the ownership thereof (both as to working interest and royalty).
3. If more than one lease of different ownership is dedicated to the well, have the interests of all owners been consolidated by communitization, unitization, force-pooling, etc?

☐ Yes ☐ No If answer is "yes," type of consolidation _____

If answer is "no," list the owners and tract descriptions which have actually been consolidated. (Use reverse side of this form if necessary.) _____

No allowable will be assigned to the well until all interests have been consolidated (by communitization, unitization, forced-pooling, or otherwise) or until a non-standard unit, eliminating such interests, has been approved by the Commission.



CERTIFICATION

I hereby certify that the information contained herein is true and complete to the best of my knowledge and belief.

Rudy D. Motto

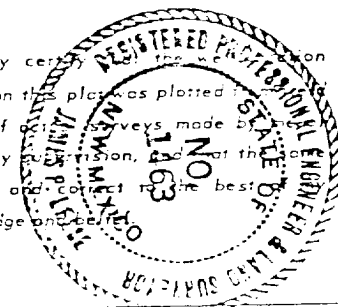
Name
Rudy D. Motto

Position
Area Superintendent

Company
SUPRON ENERGY CORPORATION

Date
January 18, 1980

I hereby certify that the information shown on this plat was plotted from notes of surveys made by me under my supervision, and that the same is true and correct to the best of my knowledge and belief.



Date Surveyed
October 30, 1979

Registered Professional Engineer and or Land Surveyor

James P. Leese

Certificate No.

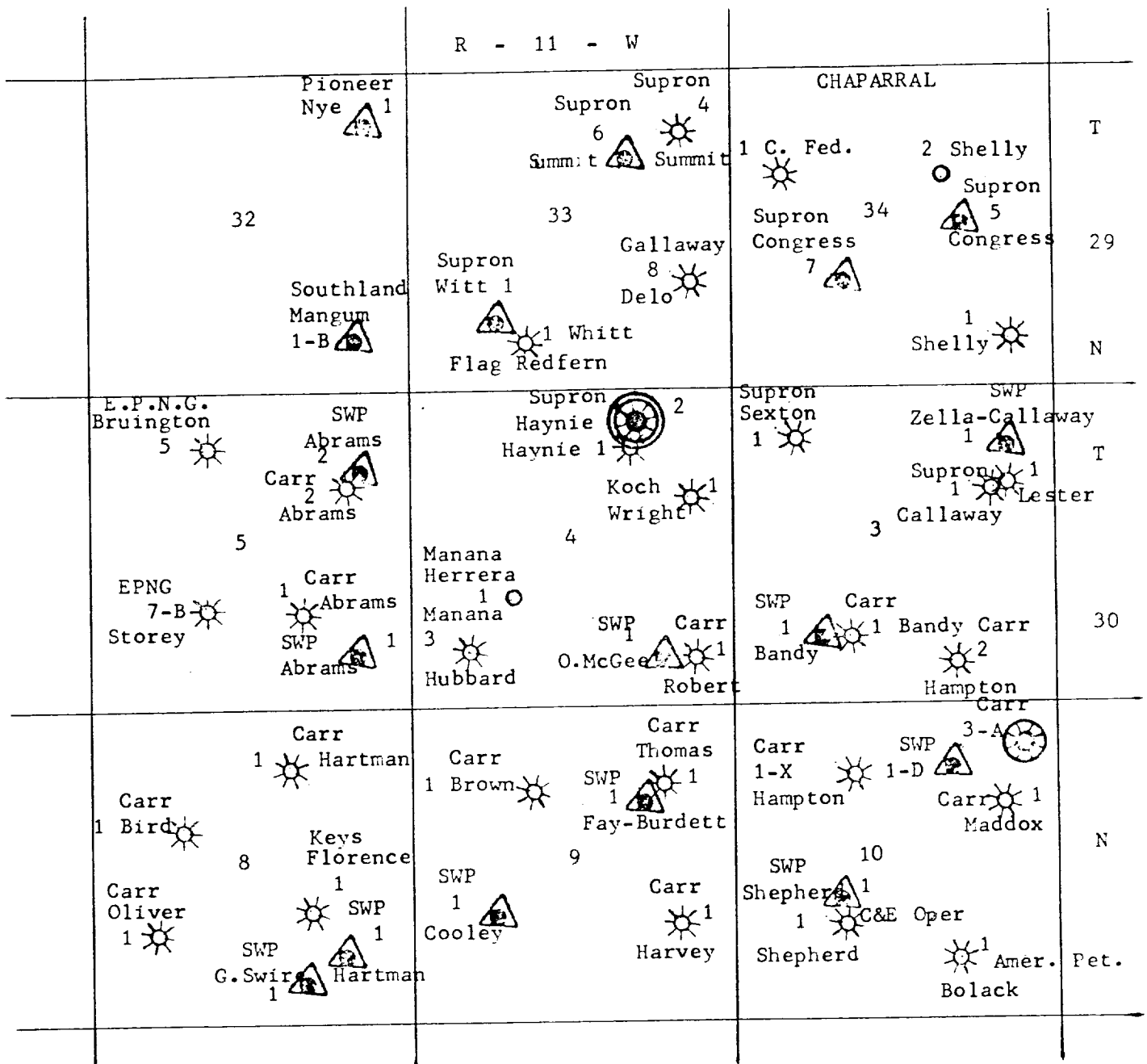
1463

0 230 660 190 1320 1650 1980 2310 2640 2000 1500 1000 500

OFFSET OPERATOR'S PLAT

HAYNIE NO. 2

LOCATION: 820 Feet from the North line and 1700 feet from the East line of Section 4, Township 30 North, Range 11 West, N.M.P.M., San Juan County, New Mexico.



Proposed Dual Blanco Mesaverde and Basin Dakota



Dakota



Pictured Cliffs



Fruitland - Pictured Cliffs



Mesaverde