

Form 9-331  
Dec. 1973

Form Approved.  
Budget Bureau No. 42-R1424

UNITED STATES  
DEPARTMENT OF THE INTERIOR  
GEOLOGICAL SURVEY

SUNDRY NOTICES AND REPORTS ON WELLS

(Do not use this form for proposals to drill or to deepen or plug back to a different reservoir. Use Form 9-331-C for such proposals.)

1. oil well  gas well  other

2. NAME OF OPERATOR  
Dugan Production Corp.

3. ADDRESS OF OPERATOR  
P O Box 208

4. LOCATION OF WELL (REPORT LOCATION CLEARLY. See space 17 below.)  
AT SURFACE: 1640' FSL - 1120' FEL  
AT TOP PROD. INTERVAL:  
AT TOTAL DEPTH:

16. CHECK APPROPRIATE BOX TO INDICATE NATURE OF NOTICE, REPORT, OR OTHER DATA

5. LEASE  
NM 0206994

6. IF INDIAN, ALLOTTEE OR TRIBE NAME

7. UNIT AGREEMENT NAME

8. FARM OR LEASE NAME  
Horace Smith

9. WELL NO.  
#1R

10. FIELD OR WILDCAT NAME  
Basin Dakota

11. SEC., T., R., M., OR BLK. AND SURVEY OR AREA  
Sec 26 T30N R14W

12. COUNTY OR PARISH | 13. STATE  
San Juan County | NM

14. API NO.

15. ELEVATIONS (SHOW DF, KDB, AND WD)  
5583' GL

REQUEST FOR APPROVAL TO:      SUBSEQUENT REPORT OF:

TEST WATER SHUT-OFF      

FRACTURE TREAT

SHOOT OR ACIDIZE

REPAIR WELL

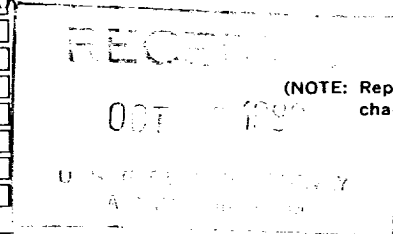
PULL OR ALTER CASING

MULTIPLE COMPLETE

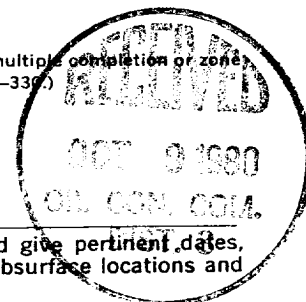
CHANGE ZONES

ABANDON\*

(other)



(NOTE: Report results of multiple completion or zone change on Form 9-331-C)



17. DESCRIBE PROPOSED OR COMPLETED OPERATIONS (Clearly state all pertinent details, and give pertinent dates, including estimated date of starting any proposed work. If well is directionally drilled, give subsurface locations and measured and true vertical depths for all markers and zones pertinent to this work.)\*

10-1-80 M.I. & R.U. Four Corners Drlg. Co. Rig #10. Spudded 12 1/2" hole @ 10:00 p.m., 9-30-80. Drilled to 267' - Ran 8 jts 8-5/8" O.D., 24#, 8 Rd., ST&C Csg. T.E. 247.87' set @ 259' RKB. Cemented w/ 150 sx class "B" w/ 2% CaCl. P.O.B. @ 5:00 a.m., 10-1-80. W.O.C. Cement circulated to surface.

Subsurface Safety Valve: Manu. and Type \_\_\_\_\_ Set @ \_\_\_\_\_ Ft.

18. I hereby certify that the foregoing is true and correct

SIGNED Thomas A. Dugan TITLE Engineer DATE 10-1-80

ACCEPTED FOR RECORD

(This space for Federal or State office use)

APPROVED BY OCT 08 1980 TITLE \_\_\_\_\_ DATE \_\_\_\_\_  
CONDITIONS OF APPROVAL, IF ANY:

BY BW FARMINGTON DISTRICT

NMOCO

UNITED STATES  
DEPARTMENT OF THE INTERIOR  
GEOLOGICAL SURVEY

5. LEASE  
NM 0206994

6. IF INDIAN, ALLOTTEE OR TRIBE NAME

7. UNIT AGREEMENT NAME

8. FARM OR LEASE NAME  
Horace Smith

9. WELL NO.  
#1R

10. FIELD OR WILDCAT NAME  
Basin Dakota

11. SEC., T., R., M., OR BLK. AND SURVEY OR AREA  
Sec 26 T30N R14W

12. COUNTY OR PARISH | 13. STATE  
San Juan County | NM

14. API NO.

15. ELEVATIONS (SHOW DF, KDB, AND WD)  
5583' GL

SUNDRY NOTICES AND REPORTS ON WELLS

(Do not use this form for proposals to drill or to deepen or plug back to a different reservoir. Use Form 9-331-C for such proposals.)

1. oil well  gas well  other

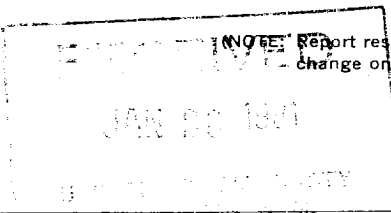
2. NAME OF OPERATOR  
Dugan Production Crop.

3. ADDRESS OF OPERATOR  
P O Box 208

4. LOCATION OF WELL (REPORT LOCATION CLEARLY. See space 17 below.)  
AT SURFACE: 1640' FSL - 1120' FEL  
AT TOP PROD. INTERVAL:  
AT TOTAL DEPTH:

16. CHECK APPROPRIATE BOX TO INDICATE NATURE OF NOTICE, REPORT, OR OTHER DATA

REQUEST FOR APPROVAL TO:	SUBSEQUENT REPORT OF:
TEST WATER SHUT-OFF <input type="checkbox"/>	<input checked="" type="checkbox"/>
FRACTURE TREAT <input type="checkbox"/>	<input type="checkbox"/>
SHOOT OR ACIDIZE <input type="checkbox"/>	<input type="checkbox"/>
REPAIR WELL <input type="checkbox"/>	<input type="checkbox"/>
PULL OR ALTER CASING <input type="checkbox"/>	<input type="checkbox"/>
MULTIPLE COMPLETE <input type="checkbox"/>	<input type="checkbox"/>
CHANGE ZONES <input type="checkbox"/>	<input type="checkbox"/>
ABANDON* <input type="checkbox"/>	<input type="checkbox"/>
(other) <input type="checkbox"/>	<input type="checkbox"/>



17. DESCRIBE PROPOSED OR COMPLETED OPERATIONS (Clearly state all pertinent details, and give pertinent dates, including estimated date of starting any proposed work. If well is directionally drilled, give subsurface locations and measured and true vertical depths for all markers and zones pertinent to this work.)\*

See attached reports for 4 1/2" csg - 10-10-80  
frac - 1-14-81  
1 1/4" tbg. - 1-15-81



Subsurface Safety Valve: Manu. and Type \_\_\_\_\_ Set @ \_\_\_\_\_ Ft.

18. I hereby certify that the foregoing is true and correct  
SIGNED Thomas A. Dugan TITLE Engineer DATE 1-22-81  
(This space for Federal or State office use)

APPROVED BY \_\_\_\_\_ TITLE \_\_\_\_\_ DATE \_\_\_\_\_  
CONDITIONS OF APPROVAL, IF ANY:

10-6-80 5030' - Drlg. Wt. 9.0 Vis 33 W.L. 9.0  
1<sup>0</sup> @ 4704' 1<sup>0</sup> @ 5201'

22-3/4 hrs - drlg.  
3/4 hr - rig service  
1/2 hr - survey

10-7-80 5912' - Drlg. Wt. 9.2 Vis 35 W.L. 7.0  
1<sup>1/4</sup> @ 5699'

23 hrs - drlg.  
3/4 hr - rig service  
1/4 hr - survey

10-8-80 6130' - T.D. Wt. 9.2 Vis 60 W.L. 8.0  
1<sup>0</sup> @ 5935'

7 hrs - trip  
13-3/4 hrs - drlg.  
1/2 hr - rig service  
1/4 hr - wash to bottom  
1 hr - short trip  
1-1/2 hrs - circ. for logs

10-9-80 6150' - Laying down drill pipe

6 hrs - trip  
1/2 hr - circ.  
9-1/2 hrs - rig repair  
7 hrs - log  
1 hr - laying down drill pipe

10-10-80 Finish laying down drill pipe. Rigged up and ran 150 jts 4<sup>1/2</sup>" OD, 10.5#, 8 Rd, K-55, ST&C csg. T.E. 6167.16' set at 6144' RKB. Cemented w/ 200 sx class "B" w/ 8% gel & 1/4# flocele per sx. followed by 127 sx class "B" w/ 1/4# flocele per sx. (Total slurry 531 cu. ft.). Pump did not bump - over displaced 11 bbls. Check float did not hold, flowed back 2 bbls. Shut in - checked float - flowed back 1/2 bbl and held. Had good mud returns and reciprocated pipe OK while cementing. Dropped trip plug and opened stage tool. Circulated 4 hrs with rig pump. Cemented second stage through stage tool at 4090' with 400 sx 65-35 + 12% gel & 1/4# flocele per sx followed by 100 sx class "B" plus 4% gel & 1/4# flocele per sx. (Total slurry 1222 cu. ft.) Good returns while cementing. Closed stage tool w/ 2000 psi. Held OK. Job complete 7:15 p.m. 10-9-80.

DUGAN PRODUCTION CORP.  
Horace Smith #1R  
Page 2A

- 12-12-80 Move in and rig up MTK double pulling unit. Go in hole w/ tbg and bit. Tag & Drill D.V. tool at 4090'
- 12-13-80 Go in hole. Tag up at 6090'. Circulate bottom up. Come out of hole.
- 12-14-80 Rig up Jetronics. Ran cement bond log and GR-CCL. Didn't show cement across pay zone.
- 12-15-80 Rig up Cementers Inc. Pressure up on Csg. to 3500 psi. Couldn't pump into formation. Rig up Jetronics. Perforated 2 holes at 6090'. Able to pump into formation w/ 900 psi. Go in hole w/ tbg. and Baker cement retainer. Tag bottom. Came up 12 feet; set retainer. Unable to pump down tbg. Able to pump down csg. Come out of hole.
- 12-16-80 Go in hole w/ tbg. and cement retainer. Set retainer at 6080'. Pressure up csg. to 1000 psi. OK. Squeeze Dakota thru cement retainer w/ 35 sx class "B" neat. Shut down w/ ½ bbl left on displacement. Pressure holding at 600 psi. Pump ½ bbl more. String out of retainer - reverse circulate out about 2 bbls cement. Came out of hole w/ tbg.
- 12-17-80 Perforate Dakota formation 5844-52, 5961-77, 6029-35, 6061-67. Run tbg. in hole as follows:  
197 jts 2-3/8" OD, 4.7#, J-55, 8 Rd, EUE tbg. T.E.  
6052.35' set at 6060' RKB. Nipple down BOP. Nipple up well head. Rig down MTK.

DAILY REPORT

- 1-13-81 Move in and rig up MTK Inc. Lay down 2-3/8" tubing; nipple-up BOP.
- 1-14-81 Rig up Western Co.; pumped 250 gals 15% HCl; broke down formation w/ 180 bbls fresh water, pumped 750 gals 15% HCL and 30 ball sealers, flushed acid and balls w/ fresh water.

Mini-Max III-30 Frac w/ Western Co. as follows:

Pumped 7980 gals fluid pad  
Pumped 19,992 gals 1# 20-40 sand fluid  
Pumped 19,992 gals 1½# 20-40 sand fluid  
Pumped 14,994 gals 2# 20-40 sand fluid  
Pumped 11,256 gals 2# 10-20 sand fluid  
Pumped 3,906 gals fresh water flush

Total 20-40 sand 79968#  
Total 10-20 sand 22,512#  
Max treating press. ~ 3050 psi  
Min Treating press. ~ 2600 psi  
Ave Treating press. ~ 3000 psi  
ISDP ~ 1350 psi

- 1-15-81 Ran 184 jts. 1¼" 2.4# V-55 10 Rd EUE tubing; tagged sand at 6039'; bottom 5 perfs plugged; T.E. 5980.50' set at 5991' RKB. Rig up and begin swabbing. Well did not flow back while running tubing. Swabbed well 2 hrs. Csg. press. 200 psi at end of day. Shut well in over night.
- 1-16-81 Swabbed well all day. Csg. pressure at end of day 450 psi. Fluid level remaining approx. 1000' from surface. Estimated fluid 160 bbls. Shut in overnight.
- 1-17-81 Csg. pressure 1000 psi. Tbg. press. 450 psi. Blow tbg. down; did not unload; swabbed well until 3:30 p.m. Csg. pressure increased to 1500 psi. Well kicked off and flowed 45 minutes and died. Made one more swab run and well kicked off at 4:30 p.m.. Left flowing to pit.
- 1-18-81 Gauged well after flowing to pit 17 hrs. Well making 1750 MCFGPD w/ 880 psi csg. pressure and spray of wtr. and condensate. Shut well in at 9:30 a.m. for I.P.