

UNITED STATES
DEPARTMENT OF THE INTERIOR
GEOLOGICAL SURVEY

APPLICATION FOR PERMIT TO DRILL, DEEPEN, OR PLUG BACK

1a. TYPE OF WORK

DRILL ☒DEEPEN ☐PLUG BACK ☐

b. TYPE OF WELL

OIL
WELL ☐GAS
WELL ☒

OTHER

SINGLE
ZONE ☐MULTIPLE
ZONE ☒

2. NAME OF OPERATOR

SUPRON ENERGY CORPORATION

3. ADDRESS OF OPERATOR

P.O. Box 808, Farmington, New Mexico 87401 U.S.

4. LOCATION OF WELL (Report location clearly and in accordance with any State requirements.)

At surface
820 ft./North line and 1830 ft./West line

At proposed prod. zone

Same as above

14. DISTANCE IN MILES AND DIRECTION FROM NEAREST TOWN OR POST OFFICE*

10 miles northeast of Blanco, New Mexico

15. DISTANCE FROM PROPOSED*

LOCATION TO NEAREST
PROPERTY OR LEASE LINE, FT.
(Also to nearest drlg. unit line, if any)

820 ft.

820 ft.

18. DISTANCE FROM PROPOSED LOCATION*

TO NEAREST WELL, DRILLING, COMPLETED,
OR APPLIED FOR, ON THIS LEASE, FT.

3460 ft.

16. NO. OF ACRES IN LEASE

2047.19

19. PROPOSED DEPTH

8150

17. NO. OF ACRES ASSIGNED
TO THIS WELLw/320.00 W₂ 8 W/320

20. ROTARY OR CABLE TOOLS

21. ELEVATIONS (Show whether DF, RT, GR, etc.)

6570 Gr.

22. APPROX. DATE WORK WILL START*

June 15, 1980

23. PROPOSED CASING AND CEMENTING PROGRAM

SIZE OF HOLE	SIZE OF CASING	WEIGHT PER FOOT	SETTING DEPTH	QUANTITY OF CEMENT
12-1/4"	10-3/4"	32.75	250	15 SX
9-7/8"	7-5/8"	26.40	3790	325 SX
6-3/4"	5-1/2"	15.50	3640' to 8150'	500 SX

Surface hole will be drilled to T.D. of +250 ft. Casing will be run and cement circulated to the surface. The intermediate hole will be drilled to T.D. of +3790 ft. using mud as the circulating medium. Pipe will be run and cemented w/325 sx of cement with the est. top of the cement at 1950 ft. The remainder of the hole will be drilled, using gas as the circulating medium to +8150 ft. A liner will be run to T.D. and hung off with a liner hanger at +3500 ft. The liner will be cemented with 500 sx of cement. The Dakota zone will be perforated and sand water fraced to stimulate production. A bridge plug set above the Dakota zone. The Mesaverde zone perforated and sand water fraced to stimulate production. The Mesaverde zone cleaned up. The bridge plug will be drilled out and the Dakota zone cleaned up. Tubing will be run with a production pkr. and set above the Dakota zone. A second string of tubing will be run and landed in the Mesaverde zone. The wellhead will be nipped down and a packer leakage test conducted to insure isolation of the two zones.

IN ABOVE SPACE DESCRIBE PROPOSED PROGRAM: If proposal is to deepen or plug back, give data on present productive zone and proposed new productive zone. If proposal is to drill or deepen directionally, give pertinent data on subsurface locations and measured and true vertical depths. Give blowout preventer program, if any.

24.

SIGNED

Rudy D. Motto

TITLE Area Superintendent

DATE May 2, 1980

(This space for Federal or State office use)

PERMIT NO.

APPROVAL DATE

APPROVED BY

TITLE

CONDITIONS OF APPROVAL, IF ANY:

NMOCC

DATE

Jama 1 L

All distances must be from the outer boundaries of the Section.

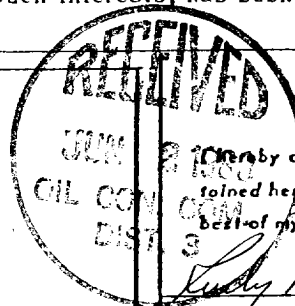
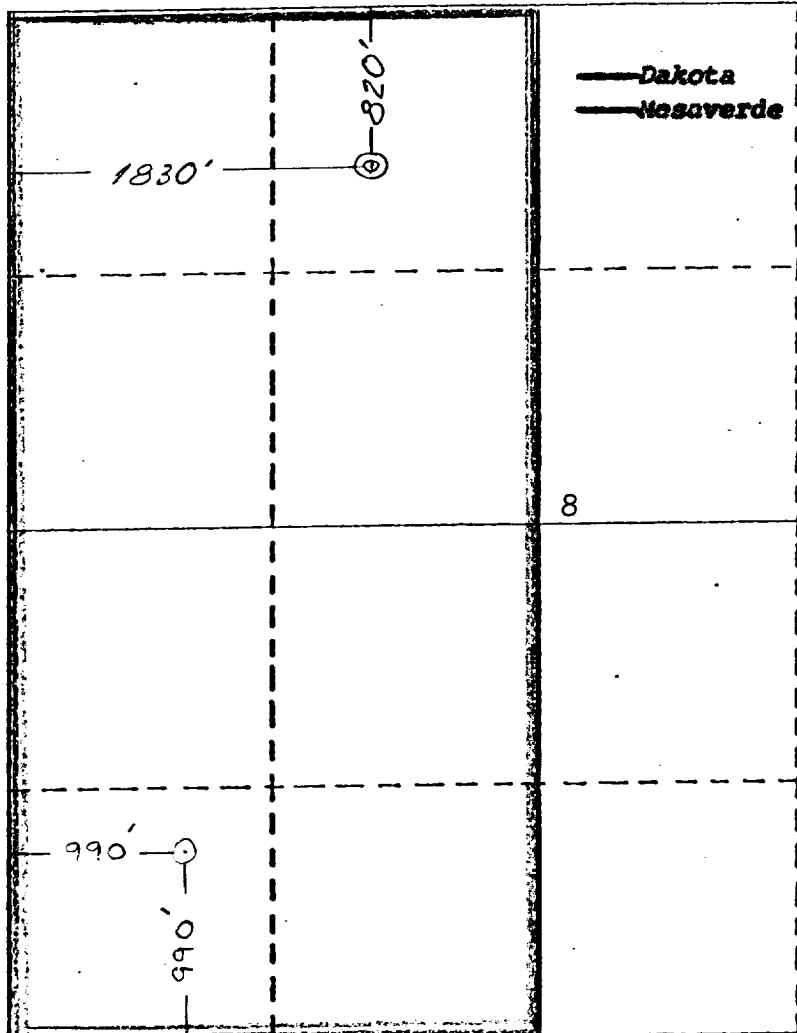
Operator SUPRON ENERGY CORPORATION			Lease OXNARD		Well No. 1-A
Unit Letter C	Section 8	Township 31 NORTH	Range 8 WEST, N	County M.P.M., SAN JUAN	
Actual Footage Location of Well: 820 feet from the NORTH line and 1830 feet from the WEST line					
Ground Level Elev. 6570	Producing Formation Dakota Mesaverde		Pool Basin Dakota Blanco Mesaverde	Dedicated Acres W 320.00	

- Outline the acreage dedicated to the subject well by colored pencil or hatchure marks on the plat below.
- If more than one lease is dedicated to the well, outline each and identify the ownership thereof (both as to working interest and royalty).
- If more than one lease of different ownership is dedicated to the well, have the interests of all owners been consolidated by communitization, unitization, force-pooling, etc?

☐ Yes ☐ No If answer is "yes," type of consolidation _____

If answer is "no," list the owners and tract descriptions which have actually been consolidated. (Use reverse side of this form if necessary.) _____

No allowable will be assigned to the well until all interests have been consolidated (by communitization, unitization, forced-pooling, or otherwise) or until a non-standard unit, eliminating such interests, has been approved by the Division.



CERTIFICATION

I hereby certify that the information contained herein is true and complete to the best of my knowledge and belief.

Ludy D. Webb
Name

Area Superintendent

Position

SUPRON ENERGY CORPORATION

Company

March 19, 1980

Date

I hereby certify that the information shown on this plat was plotted from field notes of actual surveys made by me or under my supervision and that the same is true to the best of my knowledge and belief.



Date Surveyed

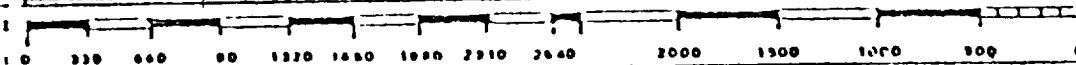
MARCH 7, 1980

Registered Professional Engineer and Land Surveyor

James P. Leese
James P. Leese

Certificate No.

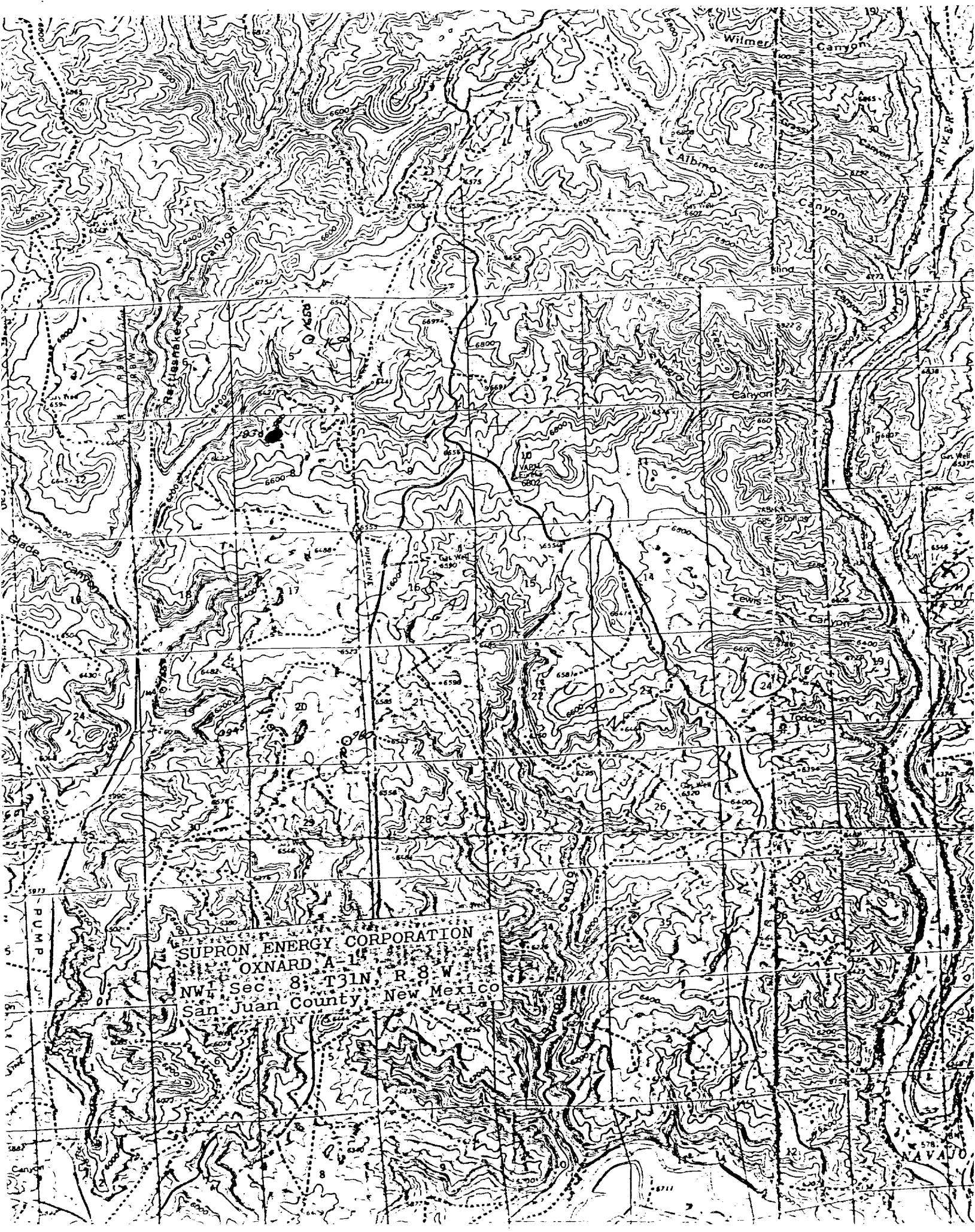
1463



SUPRON ENERGY CORPORATION
OXNARD No. 1-A
NW $\frac{1}{4}$ Sec. 8, T-31N, R-8W, N.M.P.M.
San Juan County, New Mexico

The following attachments are included with this application:

1. Topographical map showing the proposed location and access road.
2. Planned access road is 2800 ft. long and 20 ft. wide. The road will follow the natural contours of the land and will have drainage facilities installed to meet the requirements of N.T.L.-6. No extra surfacing materials will be used.
3. Map showing existing producing facilities and access roads.
4. Location of surface equipment if required.
5. Drilling and completion water will be obtained from the San Juan River.
6. All pits will be fenced and constructed in such a way as to prevent litter on the location.
7. We will dispose of all waste by placing it in the reserve pit and burying it when the well is completed.
8. There will be no camp at or near the well site.
9. There will be no air strip.
10. A plat is attached showing the location of the rig, mud tanks, reserve pit, burn pit and etc.
11. A letter of certification is attached. The operator representative for compliance purposes is Rudy D. Motto, Area Superintendent, P.O. Box 808, Farmington, New Mexico 87401. Phone (505) 325-3587.
12. After the well is completed, the location will be cleaned up and bladed. The reserve pit will be allowed to dry and then be filled and restored to its natural state.
13. The soil is sandy loam and clay, the principal vegetation is juniper, pinon, bitterbrush, mountain mahogany, sagebrush, narrow and broad leaf yucca, snakeweed, rabbit brush and three-awn and prickley pear.



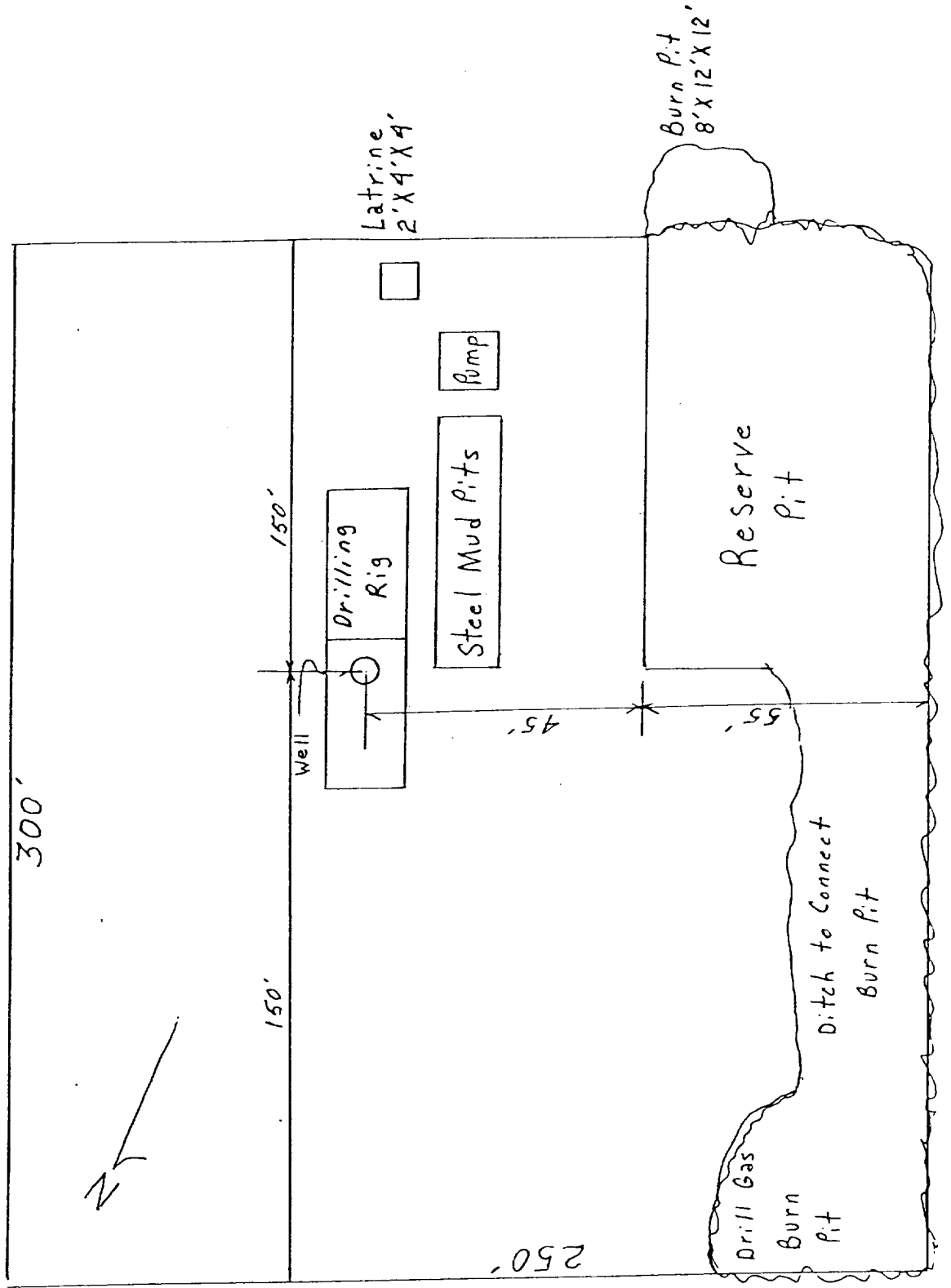
SUPRON ENERGY CORPORATION
OXNARD A-1
NW 1/4 Sec. 8, T31N, R. 8 W.
San Juan County, New Mexico

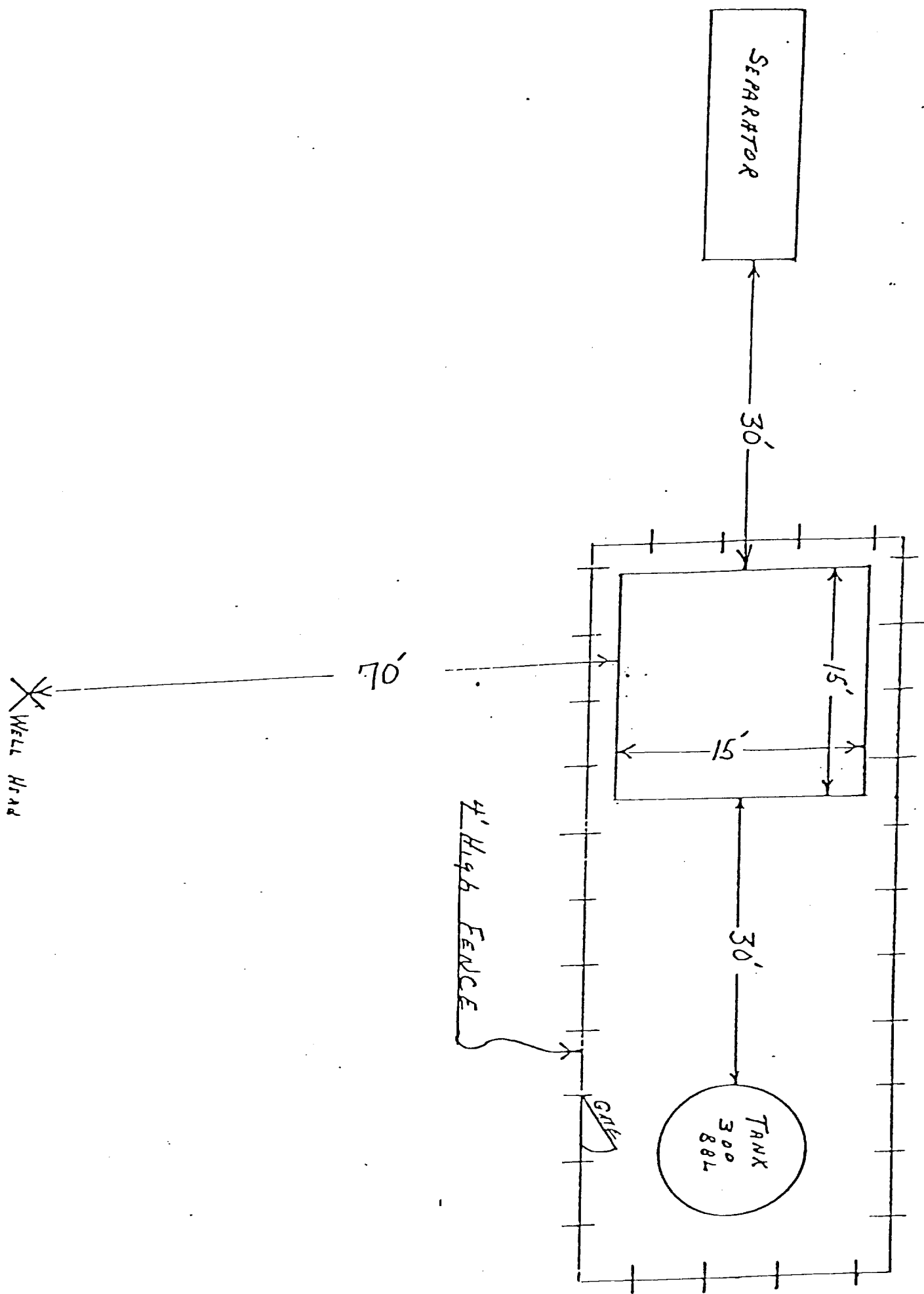
LOCATION AND EQUIPMENT LAYOUT

SUPRON ENERGY CORPORATION

OXNARD No. 1-A

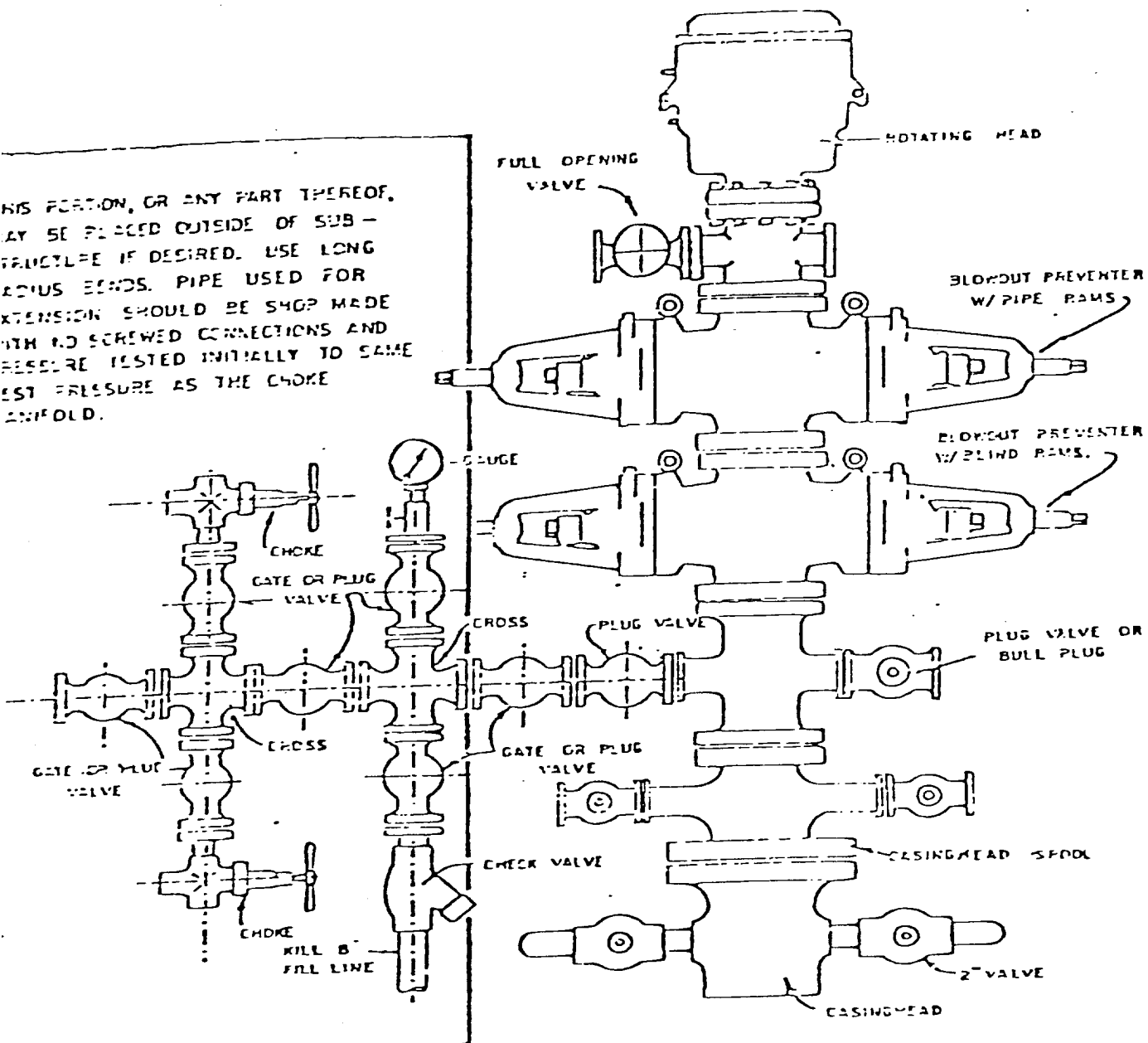
820 feet from the North line and 1830 feet from the West line of Section 8, Township 31 North, Range 8 West, N.M.P.M., San Juan County, New Mexico.





Blowout Preventer will be tested daily and prior to drilling out with the results to be logged on the drillers report.

The B.O.P. and all valve and fittings are rated at 3000 psi working pressure, and hydraulically operated

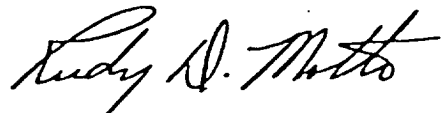


BLOWOUT PREVENTER HOOKUP

SUPRON ENERGY CORPORATION
Post Office Box 808
FARMINGTON, NEW MEXICO 87401

I hereby certify that I, or persons under my direct supervision, have inspected the proposed drillsite and access route; that I am familiar with the conditions which presently exist; that the statements made in this plan are, to the best of my knowledge, true and correct; and, that the work associated with the operations proposed herein will be performed by SUPRON ENERGY CORPORATION and its contractors subcontractors in conformity with this plan and the terms and conditions under which it is approved.

SUPRON ENERGY CORPORATION

A handwritten signature in cursive script, reading "Rudy D. Motto".

Rudy D. Motto
Area Superintendent
Phone: 325-3587

SUPRON ENERGY CORPORATION

OXNARD No. 1-A

NW $\frac{1}{4}$ Sec. 8, T-31N, R-8W, N.M.P.M.
San Juan County, New Mexico

1. The Geologic name of the surface formation is, "Wasatch".
2. The estimated tops of important Geologic markers are:
 - A. Base of the Ojo Alamo 2435 ft.
 - B. Kirtland 2435 ft.
 - C. Fruitland 3120 ft.
 - D. Pictured Cliffs 3495 ft.
 - E. Chacra 4395 ft.
 - F. Cliff House 5102 ft.
 - G. Point Lookout 5805 ft.
 - H. Gallup 7211 ft.
 - I. Greenhorn 7885 ft.
 - J. Dakota 7947 ft.
3. The estimated depths at which anticipated water, oil or other mineral bearing formations are expected to be encountered are:
 - A. Ojo Alamo 2435 ft. Water
 - B. Kirtland 2435 ft. Water
 - C. Fruitland 3120 ft. Water
 - D. Pictured Cliffs 3495 ft. Water
 - E. Chacra 4395 ft. Water
 - F. Cliff House 5102 ft. Gas
 - G. Point Lookout 5805 ft. Gas
 - H. Gallup 7211 ft. Dry
 - I. Greenhorn 7885 ft. Shale
 - J. Dakota 7947 ft. Gas
4. The casing program is shown on form 9-331C and all casing is new.
5. The lessee's pressure control equipment schematics are attached, along with minimum specifications, testing procedures, and frequencies.
6. The type, estimated volumes, and characteristics of the circulating medium are as follows:
 - A. 0 - 250 ft. Natural mud
 - B. 250 - 3790 ft. Permaloid non dispersed mud containing approx. 90 sx gel, 35 sx of permaloid and 10 sx of CMC
 - C. 3790 - 8150 ft. Natural Gas
7. The auxiliary equipment to be used will be floats at the bit and a sub on the floor with a full opening valve to be stabbed into the drill pipe when the kelly is not in the string.
8. The well is in an area which is partially developed; therefore we will not have a testing and coring program. The logging program is as follows:
 - A. E.S. Induction
 - B. Gamma Ray Density
 - C. Gamma Ray Correlation
 - D. Cement Bond Log
9. We do not expect to find any abnormal pressures, temperatures or hydrogen sulfide problems in this partially developed area.
10. The anticipated starting date for this well is June 15, 1980.