

UNITED STATES  
DEPARTMENT OF THE INTERIOR  
GEOLOGICAL SURVEY

30-045-24368

APPLICATION FOR PERMIT TO DRILL, DEEPEN, OR PLUG BACK

1a. TYPE OF WORK  
 DRILL       DEEPEN       PLUG BACK

b. TYPE OF WELL  
 OIL WELL       GAS WELL       OTHER       SINGLE ZONE       MULTIPLE ZONE

2. NAME OF OPERATOR  
 SUPRON ENERGY CORPORATION

3. ADDRESS OF OPERATOR  
 P.O. Box 808, Farmington, New Mexico 87401

4. LOCATION OF WELL (Report location clearly and in accordance with any State requirements.\*)  
 At surface 1120 ft./North line and 990 ft./West line  
 At proposed prod. zone Same as above

14. DISTANCE IN MILES AND DIRECTION FROM NEAREST TOWN OR POST OFFICE\*  
 15 miles northwest of Blanco, New Mexico

15. DISTANCE FROM PROPOSED\* LOCATION TO NEAREST PROPERTY OR LEASE LINE, FT. (Also to nearest drlg. unit line, if any)  
 990 ft.      990 ft.

16. NO. OF ACRES IN LEASE  
 2401.04

17. NO. OF ACRES ASSIGNED TO THIS WELL  
 W 315.97 4 1/4 W 315.97

18. DISTANCE FROM PROPOSED LOCATION\* TO NEAREST WELL, DRILLING, COMPLETED, OR APPLIED FOR, ON THIS LEASE, FT.  
 2110 ft.

19. PROPOSED DEPTH  
 8200'

20. ROTARY OR CABLE TOOLS  
 Rotary

21. ELEVATIONS (Show whether DF, RT, GR, etc.)  
 6581 Gr.

22. APPROX. DATE OF WORK START\*  
 June 15, 1980

5. LEASE DESIGNATION AND SERIAL NO.  
 SF 078508

6. IF INDIAN, ALLOTTEE OR TRIBE NAME

7. UNIT AGREEMENT NAME

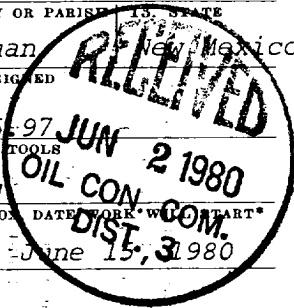
8. FARM OR LEASE NAME  
 Nordhaus

9. WELL NO.  
 6-A

10. FIELD AND POOL, OR WILDCAT  
 Blanco Mesaverde-Basin Dakot

11. SEC., T., R., M., OR BLK. AND SURVEY OR AREA  
 Sec. 1, T-31N, R-9W, N.M.P.M

12. COUNTY OR PARISH, STATE  
 San Juan, New Mexico



23. PROPOSED CASING AND CEMENTING PROGRAM

SIZE OF HOLE	SIZE OF CASING	WEIGHT PER FOOT	SETTING DEPTH	QUANTITY OF CEMENT
12-1/4"	10-3/4"	32.50	250'	175 sx CIRC
9-7/8"	7-5/8"	26.40	3735'	325 sx
6-3/4"	5-1/2"	15.50	3585 to 8200'	500 sx

Surface hole will be drilled to T.D. of +250 ft., csg. will be run and cement circulated to the surface. The intermediate hole will be drilled to T.D. of +3735' using mud as the circulating medium. Pipe will be run and cemented w/325 sx of cement with the estimated top of the cement at 2000 ft. The remainder of the hole will be drilled, using gas as the circulating medium, to +8200'. A liner will be run to T.D. and hung off with a liner hanger @ +3585 ft. The liner will be cemented with 500 sx of cement. The Dakota zone will be perforated and sand water fraced to stimulate production. A bridge plug set above the Dakota zone. The Mesaverde zone perforated and sand water fraced to stimulate production. The Mesaverde zone cleaned up. The bridge plug will be drilled out and the Dakota zone cleaned up. Tubing will be run with a production pkr. and set above the Dakota zone. A second string of tubing will be run and landed in the Mesaverde zone. The wellhead will be nipped down and a packer leakage test conducted to insure isolation of the two zones.

NWD-3-46

IN ABOVE SPACE DESCRIBE PROPOSED PROGRAM: If proposal is to deepen or plug back, give data on present productive zone and proposed new productive zone. If proposal is to drill or deepen directionally, give pertinent data on subsurface locations and measured and true vertical depths. Give blowout preventer program, if any.

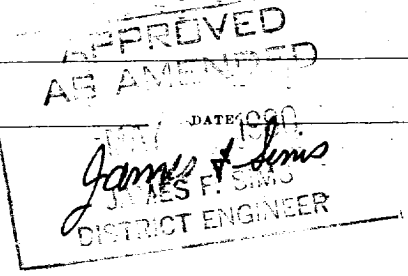
24. SIGNED Rudy D. Motto TITLE Area Superintendent DATE May 1, 1980

(This space for Federal or State office use)

PERMIT NO. \_\_\_\_\_ APPROVAL DATE \_\_\_\_\_

APPROVED BY \_\_\_\_\_ TITLE \_\_\_\_\_

CONDITIONS OF APPROVAL, IF ANY:



DRILLING OPERATIONS AGREEMENT ARE  
 SIGNATURE OF OPERATOR  
 "RECEIVED" DATE

NMOCC  
 ck 3/26

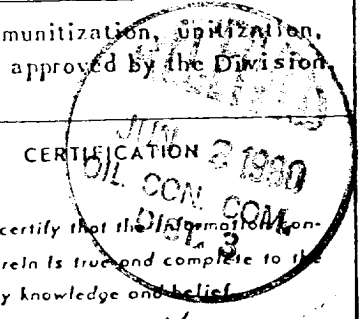
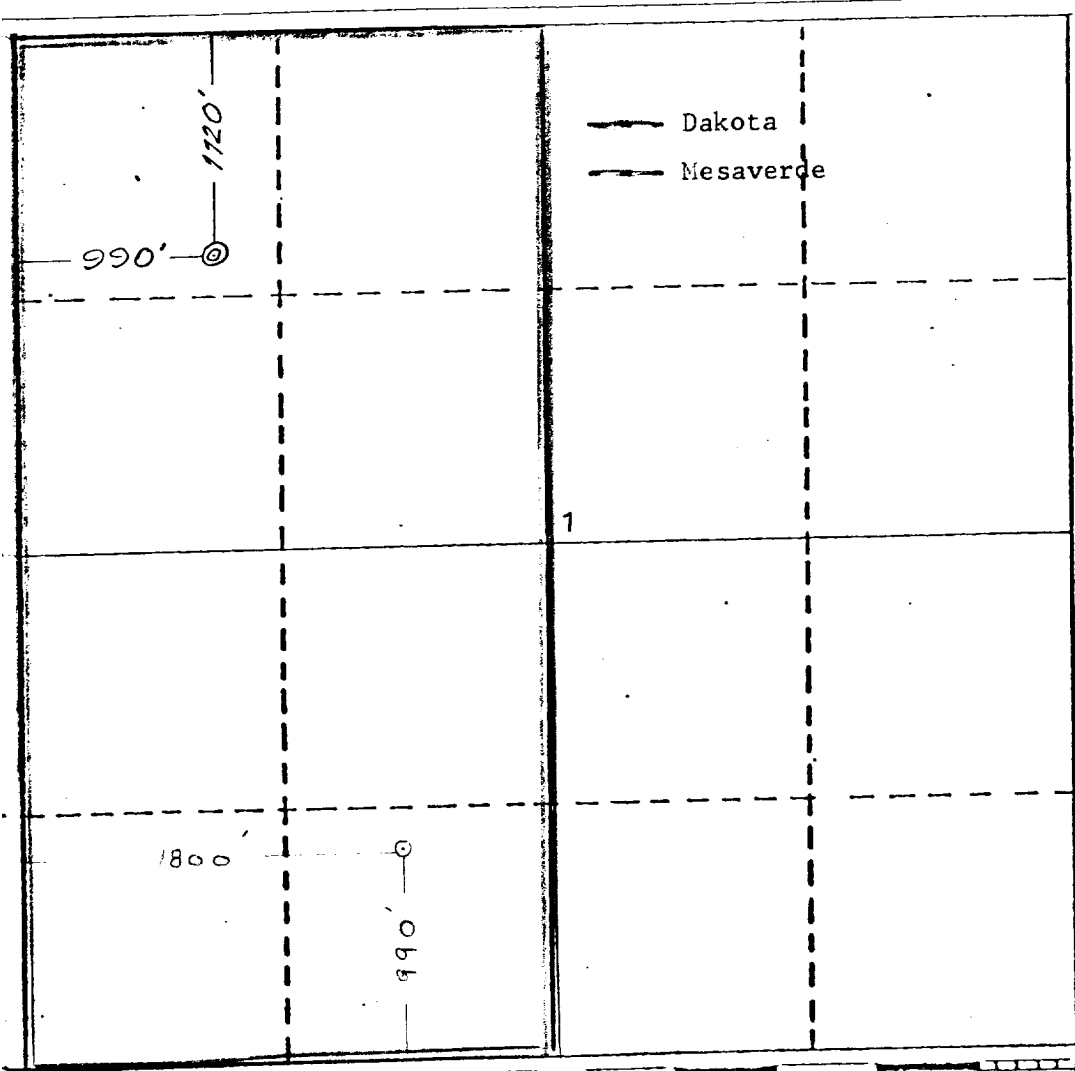
All distances must be from the outer boundaries of the Section

Lessor <b>SUPRON ENERGY CORPORATION</b>		Lessee <b>NORDHAUS</b>		Well No. <b>6-A</b>
Unit Letter <b>D</b>	Section <b>1</b>	Township <b>31 NORTH</b>	Range <b>9 WEST</b>	County <b>SAN JUAN</b>
Actual Footage Location of Well:				
1120 feet from the		<b>NORTH</b> line and	990 feet from the	<b>WEST</b> line
Ground Level Elev. <b>6581</b>	Producing Formation <b>DAKOTA ME SAVERDE</b>	Pool <b>BASIN <i>Dakota</i> BLANCO <i>Mesaverde</i></b>	Dedicated Acres <b>W/2 315.97</b> Acres	

1. Outline the acreage dedicated to the subject well by colored pencil or hatchure marks on the plat below.
2. If more than one lease is dedicated to the well, outline each and identify the ownership thereof (both as to working interest and royalty).
3. If more than one lease of different ownership is dedicated to the well, have the interests of all owners been consolidated by communitization, unitization, force-pooling, etc?

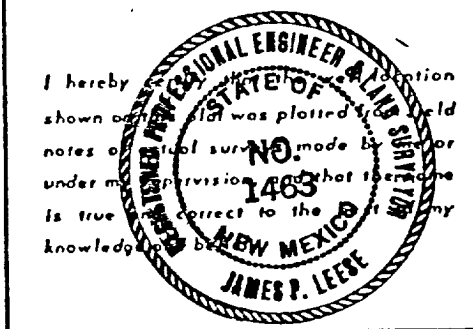
Yes  No If answer is "yes," type of consolidation \_\_\_\_\_

If answer is "no," list the owners and tract descriptions which have actually been consolidated. (Use reverse side of this form if necessary.) \_\_\_\_\_  
 No allowable will be assigned to the well until all interests have been consolidated (by communitization, unitization, forced-pooling, or otherwise) or until a non-standard unit, eliminating such interests, has been approved by the Division.



I hereby certify that the information contained herein is true and complete to the best of my knowledge and belief.

*Rudy D. Motto*  
 Name  
 Rudy D. Motto  
 Position  
 Area Superintendent  
 Company  
 SUPRON ENERGY CORPORATION  
 Date  
 March 20, 1980



Date Surveyed  
 March 19, 1980  
 Registered Professional Engineer and Land Surveyor  
*James P. Leese*  
 James P. Leese

Certificate No.  
 1463

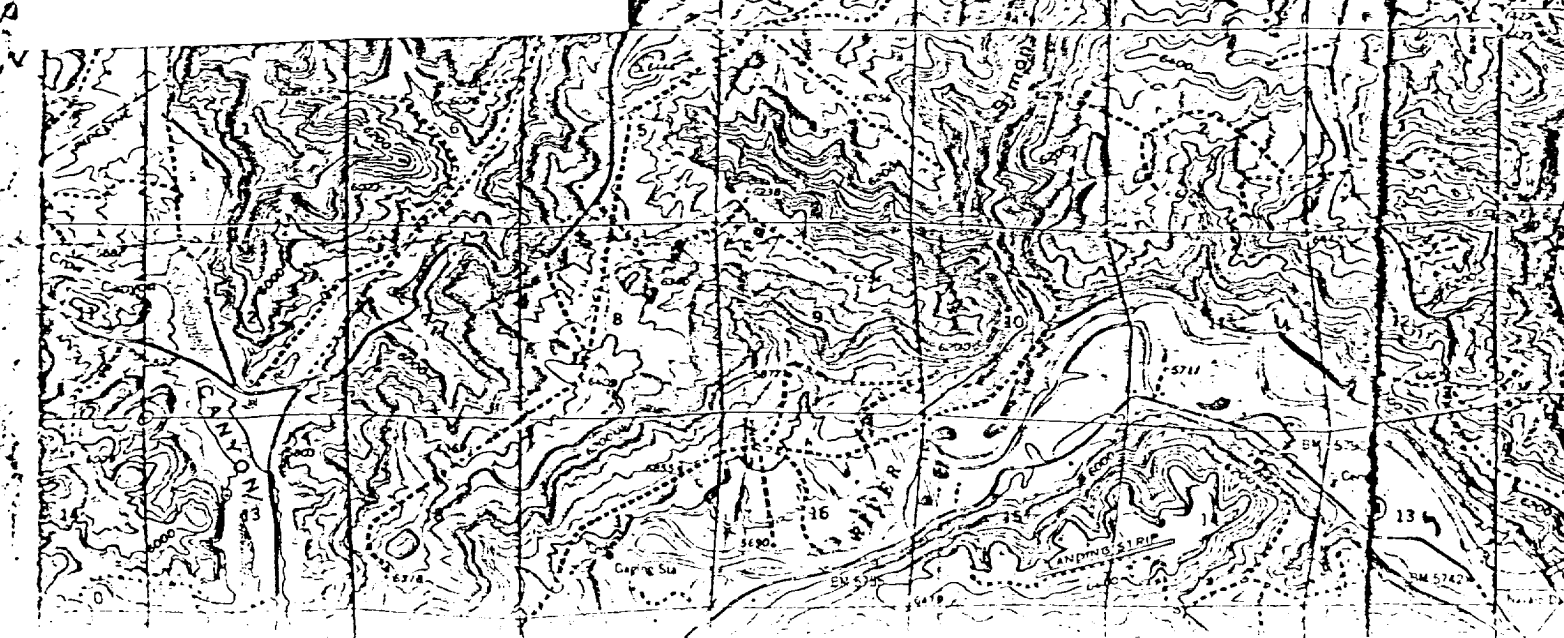
SUPRON ENERGY CORPORATION  
Nordhaus No. 6-A  
NW ¼ of Sec. 1, T-31N, R-9W, N.M.P.M.  
San Juan County, New Mexico

The following attachments are included with this application:

1. Topographical map showing the proposed location and access road.
2. No access road is required as the location adjoins an existing road. No extra materials will be used.
3. Map showing existing producing facilities and roads.
4. Location of surface equipment if required.
5. Drilling and completion water will be obtained from the San Juan River.
6. All pits will be fenced and constructed in such a way as to prevent litter on the location.
7. We will dispose of all waste by placing it in the reserve pit and burying it when the well is completed.
8. There will be no camp at or near the well site.
9. There will be no air strip.
10. A plat is attached showing the location of the rig, mud tanks, reserve pit, burn pit and ect.
11. A letter of certification is attached. The operators representative for compliance purposes is Rudy D. Motto, Area Superintendent, P.O. Box 808, Farmington, New Mexico 87401. Phone (505) 325-3587.
12. After the well is completed, the location will be cleaned up and bladed. The reserce pit will be allowed to dry and then be filled and restored to its natural state.
13. The soil is sandy loam and clay with the principal vegetation being juniper, pinon, sagebrush, snakeweed, galleta, western and crested wheat grass, bitterbrush and indian ricegrass.



Supron Energy Corpoarion  
Nordhaus #6-A  
NW 1/4 Sec. 1, T31N, R9W, N.M.P.M.  
San Juan County, New Mexico

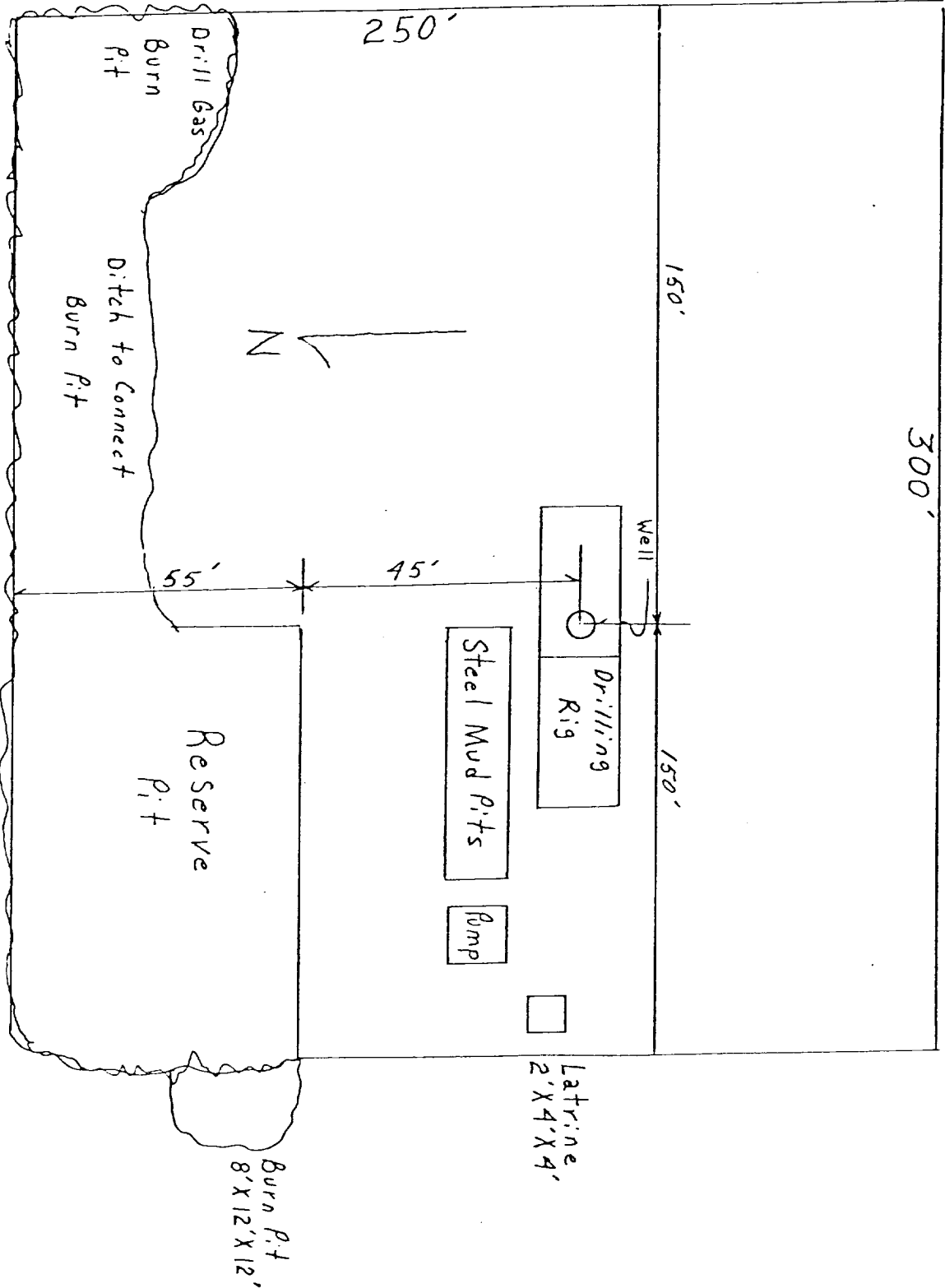


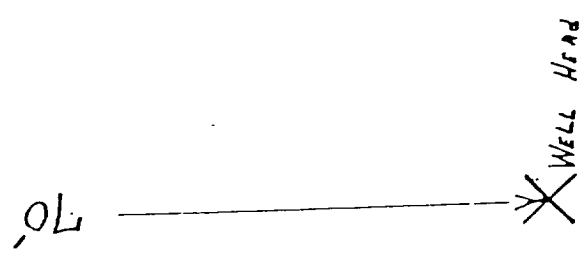
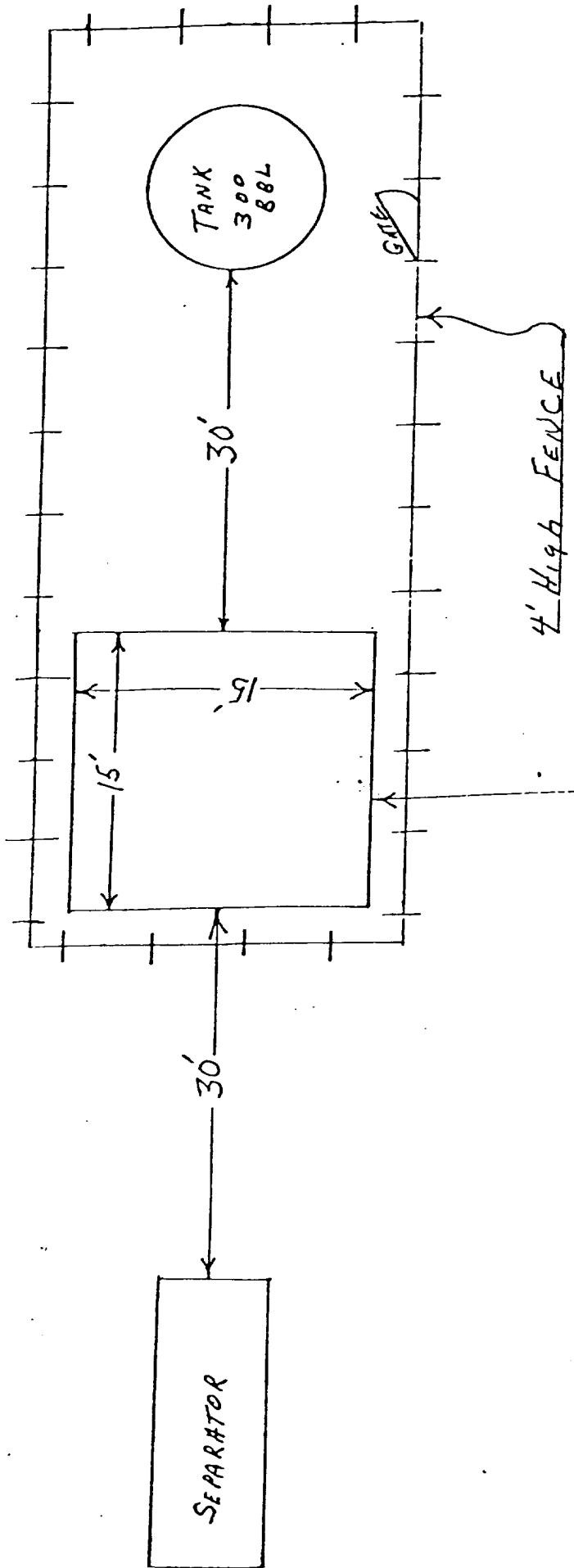
LOCATION AND EQUIPMENT LAYOUT

SUPRON ENERGY CORPORATION

Nordhaus No. 6-A

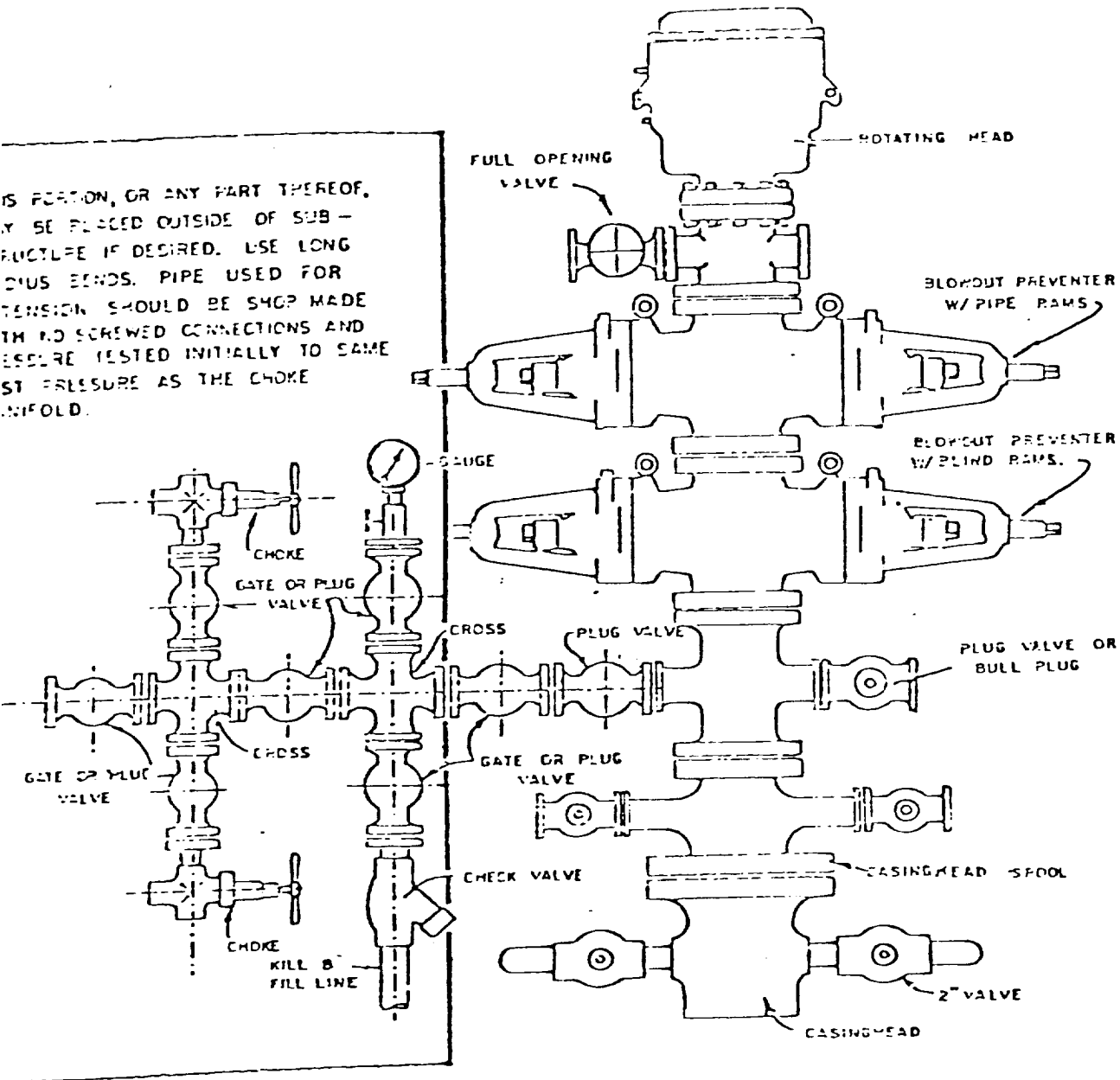
1120 feet from the North line and 990 feet from the West line of Section 1, Township 31 North, Range 9 West, N.M.P.M., San Juan County, New Mexico.





Blowout Preventer will be tested daily and prior to drilling out with the results to be logged on the drillers report.

The B.O.P. and all valve and fittings are rated at 3000 psi working pressure, and hydraulically operated



BLOWOUT PREVENTER HOOKUP

SUPRON ENERGY CORPORATION  
POST OFFICE BOX 808  
FARMINGTON, NEW MEXICO 87401

I hereby certify that I, or persons under my direct supervision, have inspected the proposed drillsite and access route; that I am familiar with the conditions which presently exist; that the statements made in this plan are, to the best of my knowledge, true and correct; and, that the work associated with the operations proposed herein will be performed by SUPRON ENERGY CORPORATION and its contractors subcontractors in conformity with this plan and the terms and conditions under which it is approved.

SUPRON ENERGY CORPORATION



Rudy D. Motto  
Area Superintendent  
Phone: 325-3587



SUPRON ENERGY CORPORATION  
Nordhaus No. 6-A  
NW ¼ of Sec. 1, T-31N, R-9W, N.M.P.M.  
San Juan County, New Mexico

1. The Geologic name of the surface formation is "Wasatch".
2. The estimated tops of important geologic markers are:
  - A. Base of the Ojo Alamo 2380 ft.
  - B. Kirtland 2380 ft.
  - C. Fruitland 3040 ft.
  - D. Pictured Cliffs 3435 ft.
  - E. Chacra 4240 ft.
  - F. Cliff House 5025 ft.
  - G. Point Lookout 5735 ft.
  - H. Gallup 6370 ft.
  - I. Greenhorn 7800 ft.
  - J. Dakota 7895 ft.
3. The estimated depth at which anticipated water, oil, or other mineral bearing formations are expected to be encountered are:
  - A. Ojo Alamo 2380 ft. Water
  - B. Kirtland 2380 ft. Water
  - C. Fruitland 3040 ft. Water
  - D. Pictured Cliffs 3435 ft. Water
  - E. Chacra 4240 ft. Water
  - F. Cliff House 5025 ft. Gas
  - G. Point Lookout 5735 ft. Gas
  - H. Gallup 6370 ft. Dry
  - I. Greenhorn 7800 ft. Shale
  - J. Dakota 7895 ft. Gas
4. The casing program is shown on form 9-331C and all casing is new.
5. The lessee's pressure control equipment schematics are attached, along with minimum specifications, testing procedures and frequencies.
6. The type, estimated volumes and characteristics of the circulating medium are as follows:
  - A. 0 - 250 ft. Natural mud
  - B. 250 - to 3735 ft. Permaloid non dispersed mud contained approx. 85 sx of gel, 35 sx of permaloid and 5 sx of C.M.C.
  - C. 3735 - 8200 ft. Natural Gas
7. The auxiliary equipment to be used will be floats at the bit and a sub on the floor with a full-opening valve to be stabbed into the drill pipe when the kelly is not in the string.
8. This well is in a highly developed area therefore; we will not have a testing and coring program. The logging program will be as follows:
  - A. E.S. Induction
  - B. Gamma Ray Density
  - C. Gamma Ray Correlation
  - D. Cement Bond Log
9. We do not expect to find any abnormal pressures, temperatures or hydrogen sulfide problems in this partially developed area.
10. The anticipated starting date is 6-15-80.