

UNITED STATES
DEPARTMENT OF THE INTERIOR
GEOLOGICAL SURVEY

APPLICATION FOR PERMIT TO DRILL, DEEPEN, OR PLUG BACK

1a. TYPE OF WORK DRILL <input checked="" type="checkbox"/> DEEPEN <input type="checkbox"/> PLUG BACK <input type="checkbox"/>				5. LEASE DESIGNATION AND SERIAL NO. SF 078508	
b. TYPE OF WELL OIL WELL <input type="checkbox"/> GAS WELL <input checked="" type="checkbox"/> OTHER <input type="checkbox"/> SINGLE ZONE <input type="checkbox"/> MULTIPLE ZONE <input checked="" type="checkbox"/>				6. IF INDIAN, ALLOTTEE OR TRIBE NAME	
2. NAME OF OPERATOR Supron Energy Corporation				7. UNIT AGREEMENT NAME	
3. ADDRESS OF OPERATOR P.O. Box 808, Farmington, New Mexico 87401				8. FARM OR LEASE NAME Nordhaus	
4. LOCATION OF WELL (Report location clearly and in accordance with any State requirements.)* At surface 1520 Ft./North; 1520 Ft./West line At proposed prod. zone Same as above				9. WELL NO. 5-A	
14. DISTANCE IN MILES AND DIRECTION FROM NEAREST TOWN OR POST OFFICE* 14 Miles N.W. from Blanco, New Mexico				10. FIELD AND POOL, OR WILDCAT Blanco Mesaverde Basin Dakota	
15. DISTANCE FROM PROPOSED* LOCATION TO NEAREST PROPERTY OR LEASE LINE, FT. (Also to nearest drlg. unit line, if any)		1120 Feet 1120 Feet		11. SEC., T., R., M., OR BLK. AND SURVEY OR AREA Sec. 12, Twp. 31N, Rge. 9W N.M.P.M.	
16. NO. OF ACRES IN LEASE		2401.04		12. COUNTY OR PARISH San Juan	
17. NO. OF ACRES ASSIGNED TO THIS WELL		4120/314.99 & 4120/314.99		13. STATE New Mexico	
18. DISTANCE FROM PROPOSED LOCATION* TO NEAREST WELL, DRILLING, COMPLETED, OR APPLIED FOR, ON THIS LEASE, FT.		1800 Ft.		19. PROPOSED DEPTH 8150	
20. ROTARY OR CABLE TOOLS		Rotary		21. APPROX. DATE WORK WILL START* June 1, 1980	
22. ELEVATIONS (Show whether DF, RT, GR, etc.) 6528 GR					
23. PROPOSED CASING AND CEMENTING PROGRAM					
SIZE OF HOLE	SIZE OF CASING	WEIGHT PER FOOT	DEPTH	QUANTITY OF CEMENT	
12-1/4"	10-3/4"	32.75	250 Ft. DIST. 3	175 Sx. Circulate	
9-7/8"	7-5/8"	26.40	3685 Ft.	325 Sx. Est. Top 1950 ft.	
6-3/4"	5-1/2"	15.50	3535 - 8150	500 Sx. Circulate	

It is our intention to drill 12-1/4" surface hole to T.D. of \pm 250 ft. and run 10-3/4" csg. The casing will be cemented and cmt circulated to surface. The surface pipe will be pressure tested and intermediate hole will be drilled to \pm 3685 ft. using starch base mud as a circulating medium. After intermediate hole is drilled 7-5/8" csg. will be run and cemented w/325 sx. of cmt. After pressure testing the intermediate csg. we plan to drill out from under intermediate using gas as the circulating medium and drill the well to T.D. of \pm 8150 ft. 5-1/2" liner will be run and hung off with a liner hanger and the liner will be cemented with 500 sx. of cmt. The Dakota zone will be perforated and sand water fractured to stimulate production. A bridge plug will be set above the Dakota zone and the Mesaverde zone will be perforated and fractured. It will be sand water fraced to stimulate production. The Mesaverde zone will be cleaned up, the bridge plug drilled out and the Dakota zone cleaned up. Tubing will be run with a production pkr. and set above the Dakota zone. A string of tbg. will be run and set in the Mesaverde zone. The well will be nipped down and a pkr. test conducted.

NWU-3-50

IN ABOVE SPACE DESCRIBE PROPOSED PROGRAM: If proposal is to deepen or plug back, give data on present productive zone and proposed new productive zone. If proposal is to drill or deepen directionally, give pertinent data on subsurface locations and measured and true vertical depths. Give blowout preventer program, if any.

24.

SIGNED

Rudy D. Motto

TITLE

Area Superintendent

DATE

May 1, 1980

(This space for Federal or State office use)

PERMIT NO.

APPROVAL DATE

APPROVED BY

TITLE

CONDITIONS OF APPROVAL, IF ANY:

James J. Loo

All distances must be from the outer boundaries of the Section.

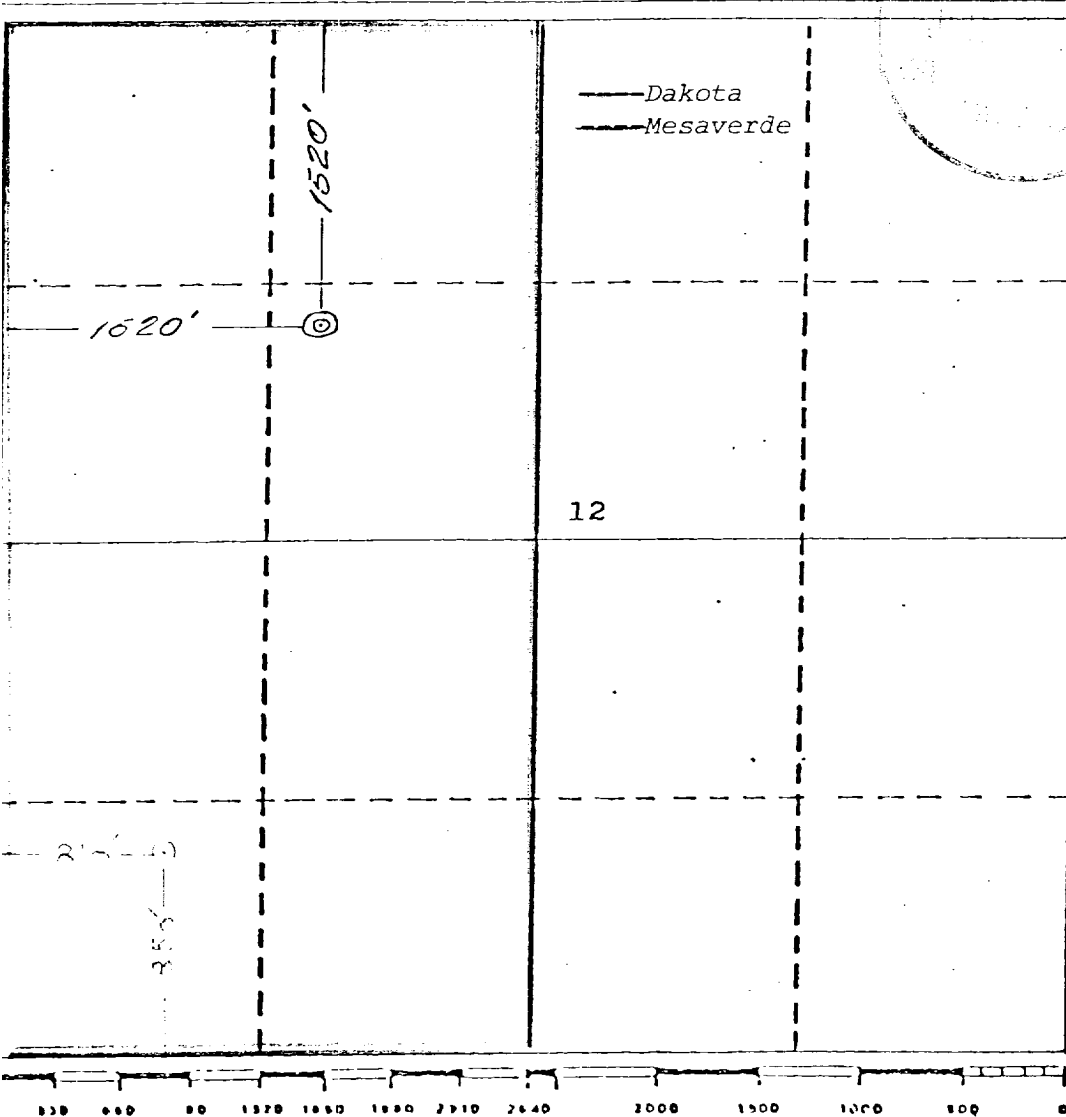
Operator SUPRON ENERGY CORPORATION			Lease NORDHAUS		Well No. 5-A
Unit Letter F	Section 12	Township 31 NORTH	Range 9 WEST, N.M.P.M.	County SAN JUAN	
Actual Footage Location of Well:					
1520 feet from the North line and		1520 feet from the West line			
Ground Level Elev. 6528	Producing Formation Dakota Mesaverde	Pool Basin Dakota Blanco Mesaverde	Dedicated Acreage W$\frac{1}{2}$ 314.98 Acres		

1. Outline the acreage dedicated to the subject well by colored pencil or hatchure marks on the plat below.
2. If more than one lease is dedicated to the well, outline each and identify the ownership thereof (both as to working interest and royalty).
3. If more than one lease of different ownership is dedicated to the well, have the interests of all owners been consolidated by communitization, unitization, force-pooling, etc?

☐ Yes ☐ No If answer is "yes," type of consolidation _____

If answer is "no," list the owners and tract descriptions which have actually been consolidated. (Use reverse side of this form if necessary.) _____

No allowable will be assigned to the well until all interests have been consolidated (by communitization, unitization, forced-pooling, or otherwise) or until a non-standard unit, eliminating such interests, has been approved by the Division.



CERTIFICATION

I hereby certify that the information contained herein is true and complete to the best of my knowledge and belief.

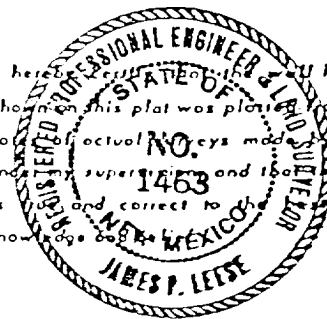
Ludy D. Matthe
Name

Area Superintendent
Position

SUPRON ENERGY CORPORATION
Company

March 19, 1980
Date

I hereby certify that the location shown on this plat was plotted from field notes and actual surveys made by me or under my supervision and that the same is true and correct to the best of my knowledge.



Date Surveyed

March 13, 1980

Registered Professional Engineer
and/or Land Surveyor

James P. Leese
James P. Leese

Certificate No.

1463

SUPRON ENERGY CORPORATION

NORDHAUS NO. 5-A

NW/4 Sec. 12, T-31N, R-9W, N.M.P.M.
San Juan County, New Mexico

The following attachments are included with this application:

1. Topographical map showing the proposed location and access road.
2. There will be no access road as the location borders an existing road. No extra surface material will be used.
3. Map showing existing producing facilities and access roads.
4. Location of surface equipment if required.
5. Drilling and completion water will be obtained from the San Juan River.
6. All pits will be fenced and constructed in such a way as to prevent litter on the location.
7. We will dispose of all waste by placing it in the reserve pit and burying it when the well is completed.
8. There will be no camp at or near the well site.
9. There will be no air strip.
10. A plat is attached showing the location of the rig, mud tanks, reserve pit, burn pit and ect.
11. A letter of Certification is attached. The operator representative for compliance purposes is Rudy D. Motto, Area Superintendent, P.O. Box 808, Farmington, New Mexico 87401. Phone (505) 325-3587
12. After the well is completed, the location will be cleaned up and bladed. The reserve pit will be allowed to dry and then be filled and restored to its natural state.
13. The soil is a rocky, sandy loam and the principal vegetation is Juniper, Pinon, Oak, Bitterbrush, Mountain Mahogany, Sagebrush, Galleta, Narrow leaf Yucca and Snakeweed.

SUPRON ENERGY CORP.
NORDHAUS 5-A-Sec. 12, T31N,
R9W=1520' F/NL & 1520' F/WL

731.2
732.4

AETEC

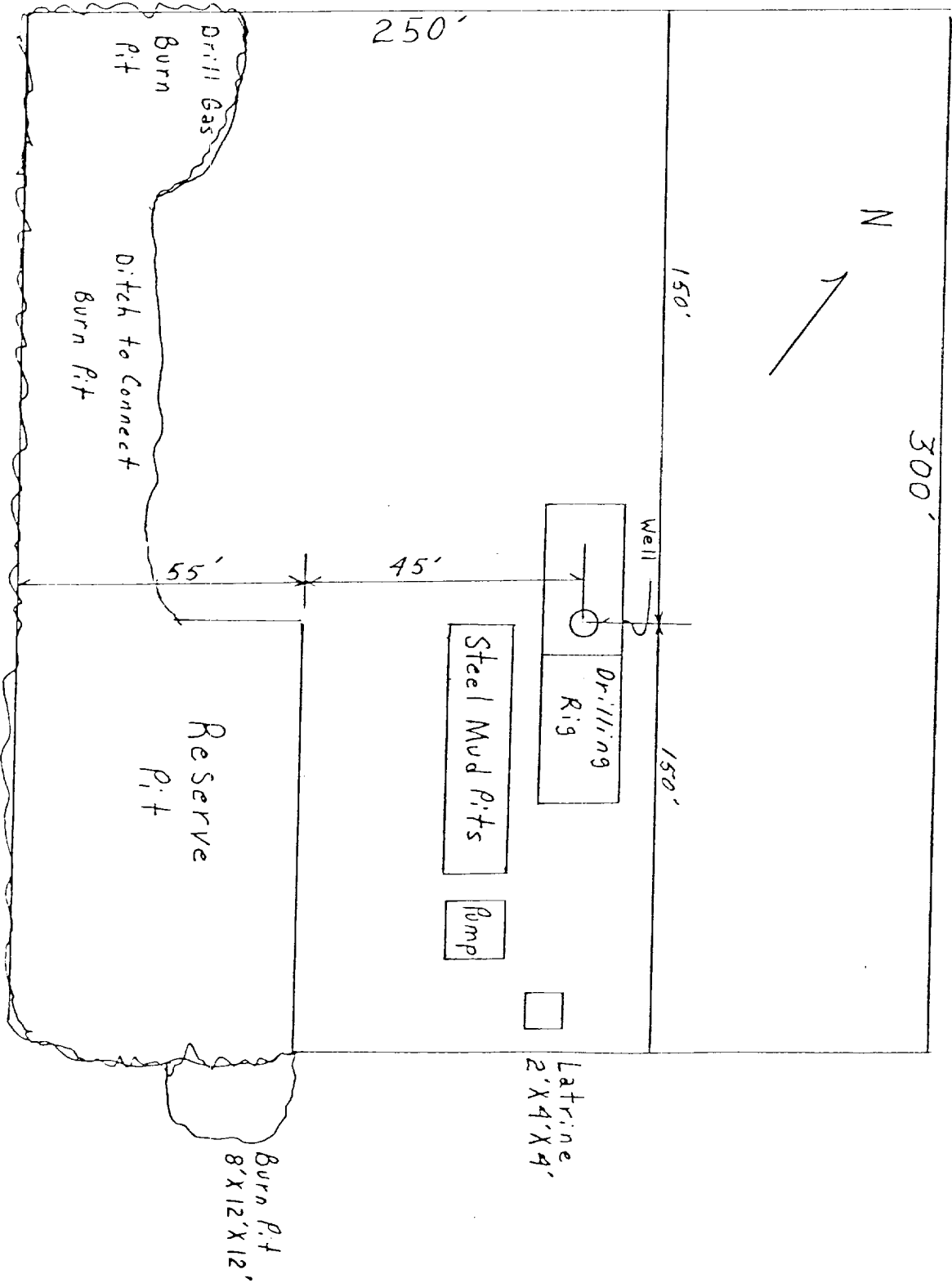


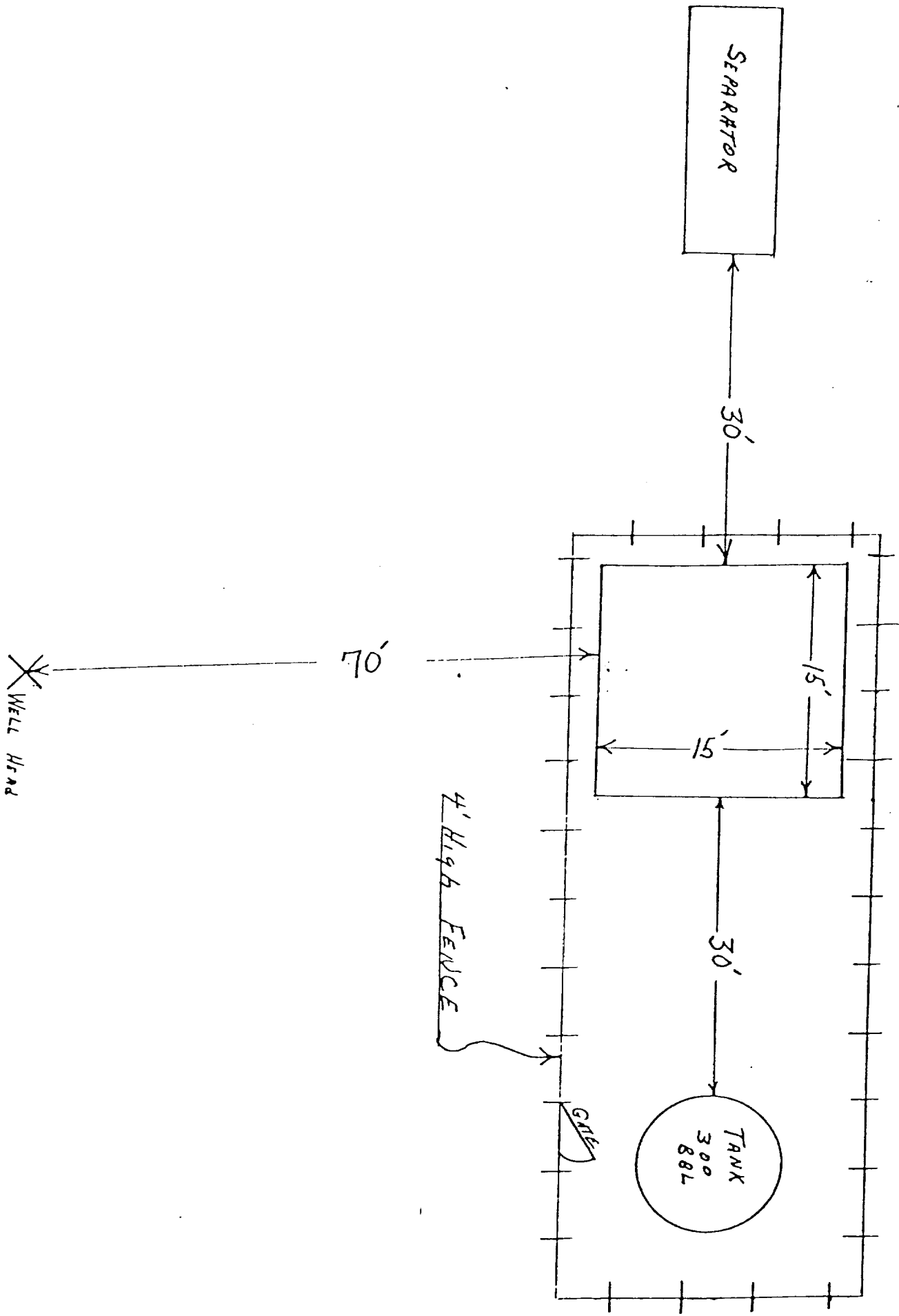
LOCATION AND EQUIPMENT LAYOUT

SUPRON ENERGY CORPORATION

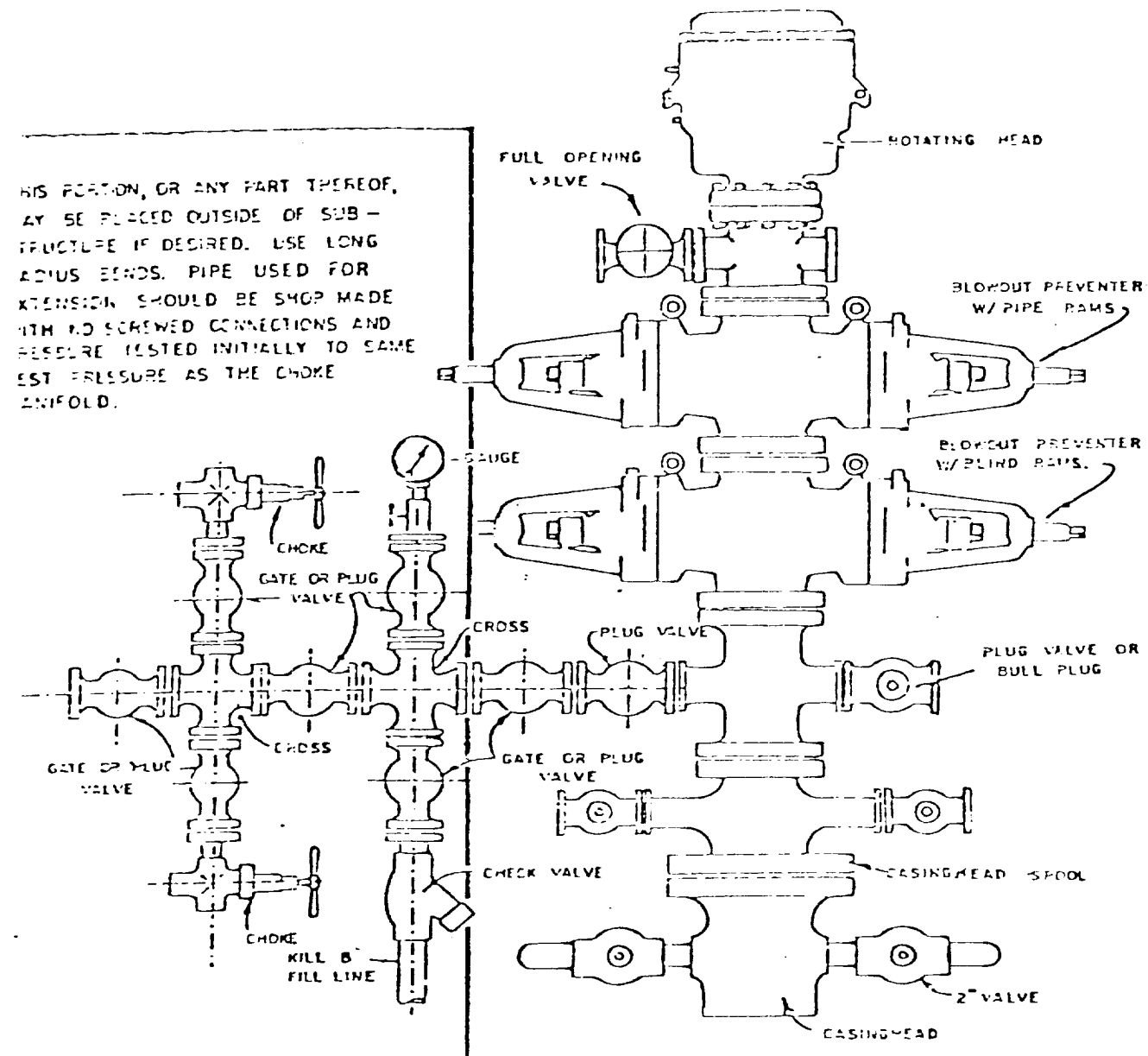
NORDHAUS NO. 5-A

1520 Feet from the North line and 1520 feet from the West line of Section 12, Township 31 North, Range 9 West, N.M.P.M., San Juan County, New Mexico.





The B.O.P. and all valve and fittings are rated at 3000 psi working pressure, and hydraulically operated



BLOWOUT PREVENTER HOOKUP

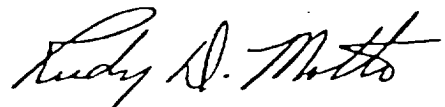
SUPRON ENERGY CORPORATION

POST OFFICE BOX 808

FARMINGTON, NEW MEXICO 87401

I hereby certify that I, or persons under my direct supervision, have inspected the proposed drillsite and access route; that I am familiar with the conditions which presently exist; that the statements made in this plan are, to the best of my knowledge, true and correct; and, that the work associated with the operations proposed herein will be performed by SUPRON ENERGY CORPORATION and its contractors subcontractors in conformity with this plan and the terms and conditions under which it is approved.

SUPRON ENERGY CORPORATION

A handwritten signature in cursive script, reading "Rudy D. Motto".

Rudy D. Motto
Area Superintendent
Phone: 325-3587

SUPRON ENERGY CORPORATION

NORDHAUS NO. 5-A

NW/4 Sec. 12, T-31N, R-9W, N.M.P.M.

San Juan County, New Mexico

1. The geologic name of the surface formation is, "Wasatch."
2. The estimated tops of important geologic markers are:

A. Base of the Ojo Alamo - - - - -	2330 Ft.
B. Kirtland - - - - -	2330 Ft.
C. Fruitland - - - - -	2990 Ft.
D. Pictured Cliffs - - - - -	3385 Ft.
E. Chacra - - - - -	4190 Ft.
F. Cliff House - - - - -	4975 Ft.
G. Point Lookout - - - - -	5685 Ft.
H. Gallup - - - - -	5320 Ft.
I. Greenhorn - - - - -	7830 Ft.
J. Dakota - - - - -	7880 Ft.
3. The estimated depths at which anticipated water, oil or other mineral bearing formations are expected to be encountered are:

A. Ojo Alamo - - - - -	2330 Ft.	- - - -	Water
B. Kirtland - - - - -	2330 Ft.	- - - -	Water
C. Fruitland - - - - -	2990 Ft.	- - - -	Water
D. Pictured Cliffs - - - - -	3385 Ft.	- - - -	Water
E. Chacra - - - - -	4190 Ft.	- - - -	Water
F. Cliff House - - - - -	4975 Ft.	- - - -	Gas
G. Point Lookout - - - - -	5685 Ft.	- - - -	Gas
H. Gallup - - - - -	5320 Ft.	- - - -	Dry
I. Greenhorn - - - - -	7830 Ft.	- - - -	Shale
J. Dakota - - - - -	7880 Ft.	- - - -	Gas
4. The casin program is shown on form 9-331C and all casing is new.
5. The lessee's pressure control equipment schematics are attached, along with minimum specifications, testing proceedures, and frequencies.
6. The type, estimated volumes, and characteristics of the circulating medium are as follows:

A. 0 to 250 Ft.	Natural mud.
B. 250 to 3685 Ft.	Permaloid non dispersed mud containing approx. 90 sx. Gel., 35 sx. of permaloid and 10 sx. of CMC.
C. 3685 to 8150 Ft.	Natural Gas
7. The auxiliary equipment to be used will be floats at the bit and a sub on the floor with a full opening valve to be stabbed into the drill pipe when the kelly is not in the string.
8. The well is in an area which is partially developed; therefore we will not have a testing and coring program. The logging program is as follows:

A. E.S. Induction
B. Gamma Ray Density
C. Gamma Ray Correlation
D. Cement Bond Log
9. We do not expect to find any abnormal presures, temperatures or hydrogen sulfide problems in this partially developed area.
10. The anticipated starting date for this well is June 1, 1980.