

NO. OF COPIES RECEIVED	
DISTRIBUTION	
SANTA FE	
FILE	
U.S.G.S.	
LAND OFFICE	
OPERATOR	

NEW MEXICO OIL CONSERVATION COMMISSION

Form C-101
Revised 1-1-65

5A. Indicate Type of Lease	
STATE <input checked="" type="checkbox"/>	FEE <input type="checkbox"/>
5. State Oil & Gas Lease No. E-5842	

APPLICATION FOR PERMIT TO DRILL, DEEPEN, OR PLUG BACK

1a. Type of Work DRILL <input checked="" type="checkbox"/> DEEPEN <input type="checkbox"/> PLUG BACK <input type="checkbox"/>		7. Unit Agreement Name
b. Type of Well OIL WELL <input type="checkbox"/> GAS WELL <input checked="" type="checkbox"/> OTHER <input type="checkbox"/>		8. Farm or Lease Name Turner "B" Com
2. Name of Operator Tenneco Oil Company		9. Well No. 2
3. Address of Operator 720 S. Colorado Blvd., Denver, Colorado 80222		10. Field and Pool, or Wildcat Basin Dakota
4. Location of Well UNIT LETTER C LOCATED 1,000 FEET FROM THE North LINE AND 1600' FEET FROM THE West LINE OF SEC. 2 TWP. 30N RGE. 9W NMPM		12. County San Juan
19. Proposed Depth 7,500'		19A. Formation Dakota
20. Rotary or C.T. Rotary		
21. Elevations (Show whether DF, RT, etc.) 6029 GR	21A. Kind & Status Plug. Bond Nation Wide	22. Approx. Date Work will start Nov. 25, 1980

PROPOSED CASING AND CEMENT PROGRAM

SIZE OF HOLE	SIZE OF CASING	WEIGHT PER FOOT	SETTING DEPTH	SACKS OF CEMENT	EST. TOP
12 1/2"	9 5/8"	36 # K-55	± 250'	Circulate to surface	
8 3/4"	7"	23# K-55	± 3600'	Circulate to surface	
6 1/2"	4 1/2"	10.5 # K-55	± 7500'	Circulate to liner top	

SEE ATTACHED DRILLING PROGNOSIS

No abnormal temperature, pressure or geologic hazards expected.

THE GAS IS DEDICATED

APPROVAL VALID
FOR 90 DAYS UNLESS
DRILLING COMMENCED,

EXPIRES 11-12-80



IN ABOVE SPACE DESCRIBE PROPOSED PROGRAM: IF PROPOSAL IS TO DEEPEN OR PLUG BACK, GIVE DATA ON PRESENT PRODUCTIVE ZONE AND PROPOSED NEW PRODUCTIVE ZONE. GIVE BLOWOUT PREVENTER PROGRAM, IF ANY.

I hereby certify that the information above is true and complete to the best of my knowledge and belief.

Signed M. Lee Freeman Title Staff Production Analyst Date August 12, 1980

(This space for State Use)

APPROVED BY Frank S. Carey TITLE SUPERVISOR DISTRICT #1 DATE AUG 14 1980

CONDITIONS OF APPROVAL, IF ANY:

write NWU

OIL CONSERVATION DIVISION

P. O. BOX 7088

SANTA FE, NEW MEXICO 87501

Form C-107

Revised 10-1-78

STATE OF NEW MEXICO

ENERGY AND MINERALS DEPARTMENT

All distances must be from the corner boundaries of the Section

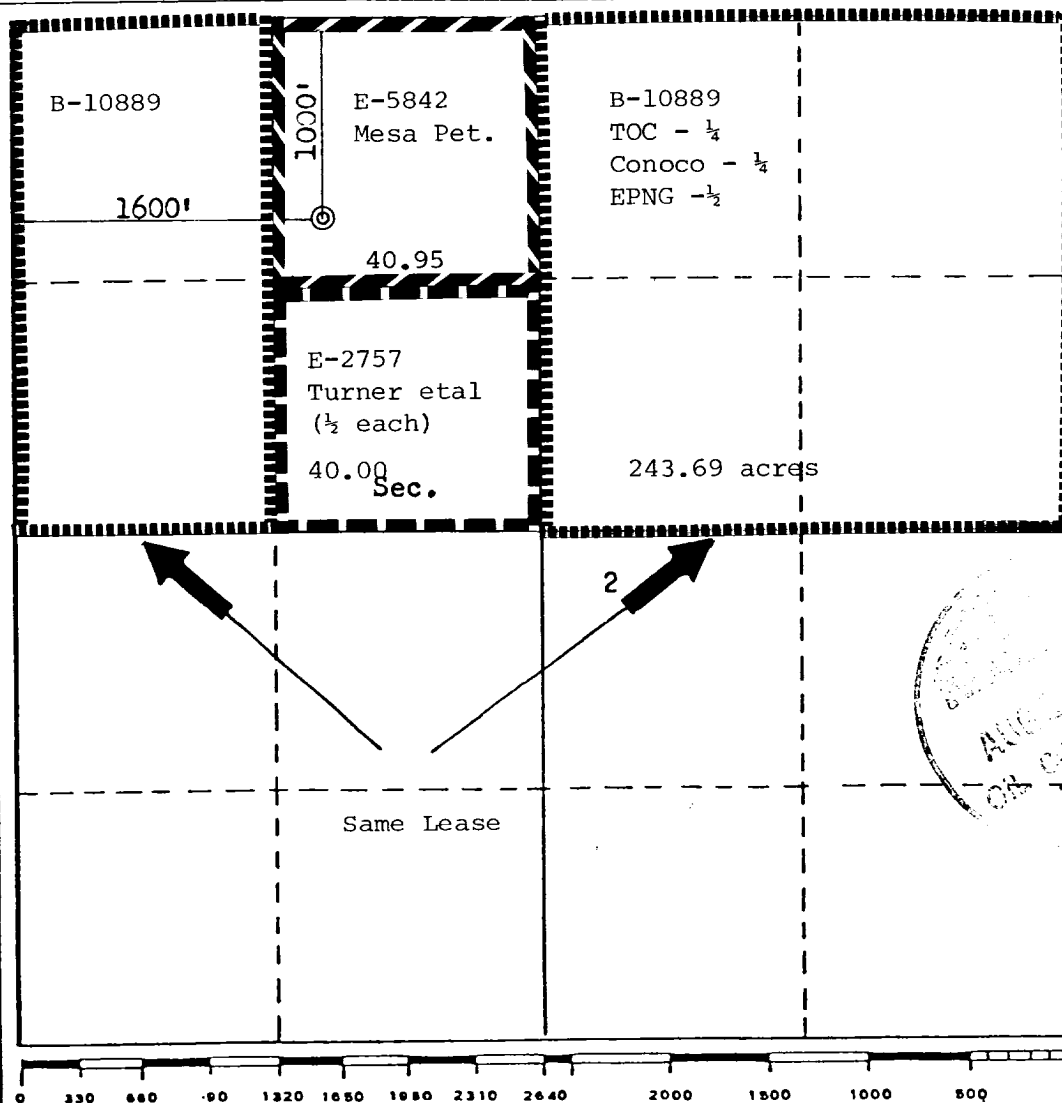
Operator TENNECO OIL COMPANY			Lease TURNER B COM		Well No. 2
Unit Letter C	Section 2	Township 30N	Range 9W	County San Juan	
Actual Footage Location of Well: 1000 feet from the North line and 1600 feet from the West line					
Ground Level Elev. 6029	Producing Formation Dakota	Pool Basin Dakota		Dedicated Acreage: 324.64 Acres	

1. Outline the acreage dedicated to the subject well by colored pencil or hachure marks on the plat below.
2. If more than one lease is dedicated to the well, outline each and identify the ownership thereof (both as to working interest and royalty).
3. If more than one lease of different ownership is dedicated to the well, have the interests of all owners been consolidated by communitization, unitization, force-pooling, etc?

☒ Yes ☐ No If answer is "yes," type of consolidation Communitiaztion

If answer is "no," list the owners and tract descriptions which have actually been consolidated. (Use reverse side of this form if necessary.)

No allowable will be assigned to the well until all interests have been consolidated (by communitization, unitization, forced-pooling, or otherwise) or until a non-standard unit, eliminating such interests, has been approved by the Commission.



CERTIFICATION

I hereby certify that the information contained herein is true and complete to the best of my knowledge and belief.

Name M. Lee Freeman

Position
Staff Production Analyst

Company
Tenneco Oil Company

Date
March 7, 1980

I hereby certify that the well location shown on this plat was plotted from field notes of actual surveys made by me or under my supervision, and that the same is true and correct to the best of my knowledge and belief.

Date Surveyed
January 24, 1980

Registered Professional Engineer and/or Land Surveyor

Fred B. Kerr Jr.

Certificate No. 3950

TENNECO OIL COMPANY
ROCKY MOUNTAIN DIVISION
PENTHOUSE, 720 SOUTH COLORADO BOULEVARD
DENVER, COLORADO 80222

DRILLING PROCEDURE

DATE: January 30, 1980

LEASE: Turner B-Com

WELL NO.: 2

LOCATION: 1,000' FNL, 1600' FWL
Sec. 2, T 30N, R 9W
San Juan County, New Mexico

FIELD: Basin Dakota

ELEVATION: 6030', Est. G.R.

TOTAL DEPTH: 7500'

PROJECTED HORIZON: Dakota

SUBMITTED BY: _____ DATE: _____

APPROVED BY: GBamer DATE: 1/31/80

DSB/ms

CC: Administration
DSB Well File
Field File

ESTIMATED FORMATION TOPS

Ojo (Water)	1660'
Lewis	1880'
Pictured Cliffs (Gas)	2830'
Mesa Verde: (Cliffhouse) (Gas)	4600'
(Menefee) (Gas)	4700'
(Point Lookout) (Gas)	5050'
Mancos	5400'
Gallup (Oil/Gas)	6450'
Greenhorn	7125'
Dakota (Gas)	7230'
T.D.	7500'

SURFACE: San Jose, Sandstone and shale.

DRILLING, CASING, AND CEMENT PROGRAM

1. MIRURT.
2. Drill 12 1/4" hole to \pm 250'.
3. Run 9 5/8", 36#, K-55, ST&C casing to \pm 250'. Cement with sufficient volume to circulate cement to surface.
4. WOC a minimum of 12 hours. Nipple up BOE and test to 1000 psi for thirty minutes.
5. Reduce hole to 8 3/4". Drill to \pm 3600'. Run 7", 23#, K-55, ST&C casing to \pm 3600'. Cement with sufficient volume to circulate cement to surface.
6. NU BOE to gas drill.
7. Drill a 6 1/4" hole with gas to 7500' \pm .
8. Log as directed by the Wellsite Geological Engineer.
9. If productive, run 4 1/2" (3500') 10.5#/(600') 11.6#, K-55, ST&C liner. Cement with sufficient volume to circulate cement to top of liner.
10. If non-productive, plug and abandon as per ~~U.S.G.S.~~ requirements.
11. MORT.

CASING PROGRAM

Surface: 250', 9 5/8", 36#, K-55, ST&C casing.

Intermediate: 3600', 7", 23#, K-55, ST&C casing.

Liner: 4 1/2" (3500', 10.5#, K-55, ST&C casing.
(600', 11.6#, K-55, ST&C casing.

MUD PROGRAM

0-250'	Native solids. Have sufficient viscosity to clean hole and run casing.
250-3600'	Benex and water. Have sufficient viscosity to run casing.
3600'-T.D.	Gas.

EVALUATION

Cores and DST's:

No cores or DST's are anticipated.

Deviation Surveys:

1. Survey surface ever 100'. Maximum allowable deviation at surface is 1°.
2. From surface to T.D., surveys must be taken every 500' or each trip, whichever is first. This may entail running the TOTCO on wireline. Record surveys on IADC Drilling Report. Maximum allowable change is 1° per 100'.

Samples: None.

Logs:

GR/IND: T.D. to Intermediate.

GR/FDC/CAL: T.D. to base Mesaverde

BLOWOUT EQUIPMENT

10" series-900 double ram hydraulic operated with closing unit and 40 gallon accumulator.

10" series-900 rotating head with 150 psi working pressure minimum, and 7" blooie line.

REPORTS

Drilling reports for the past 24 hours will include depth, footage, time distribution, activity breakdown, mud properties, bit record, bottom hole assembly, daily and cumulative mud costs, plus any other pertinent information, will be called into Tenneco Oil Company, Denver, Colorado, between 7:30 a.m. and 8:00 a.m.

1. 303-758-7130 (Office) Don Barnes
303-758-7287 (Office) Don Barnes' private line, Monday-Friday (before 7:45 a.m.)
303-936-0704 (Home) Don Barnes, weekends and holidays.
2. George Ramsey (Home) 303-771-5154.
3. John Owen (Home) 303-795-0221.

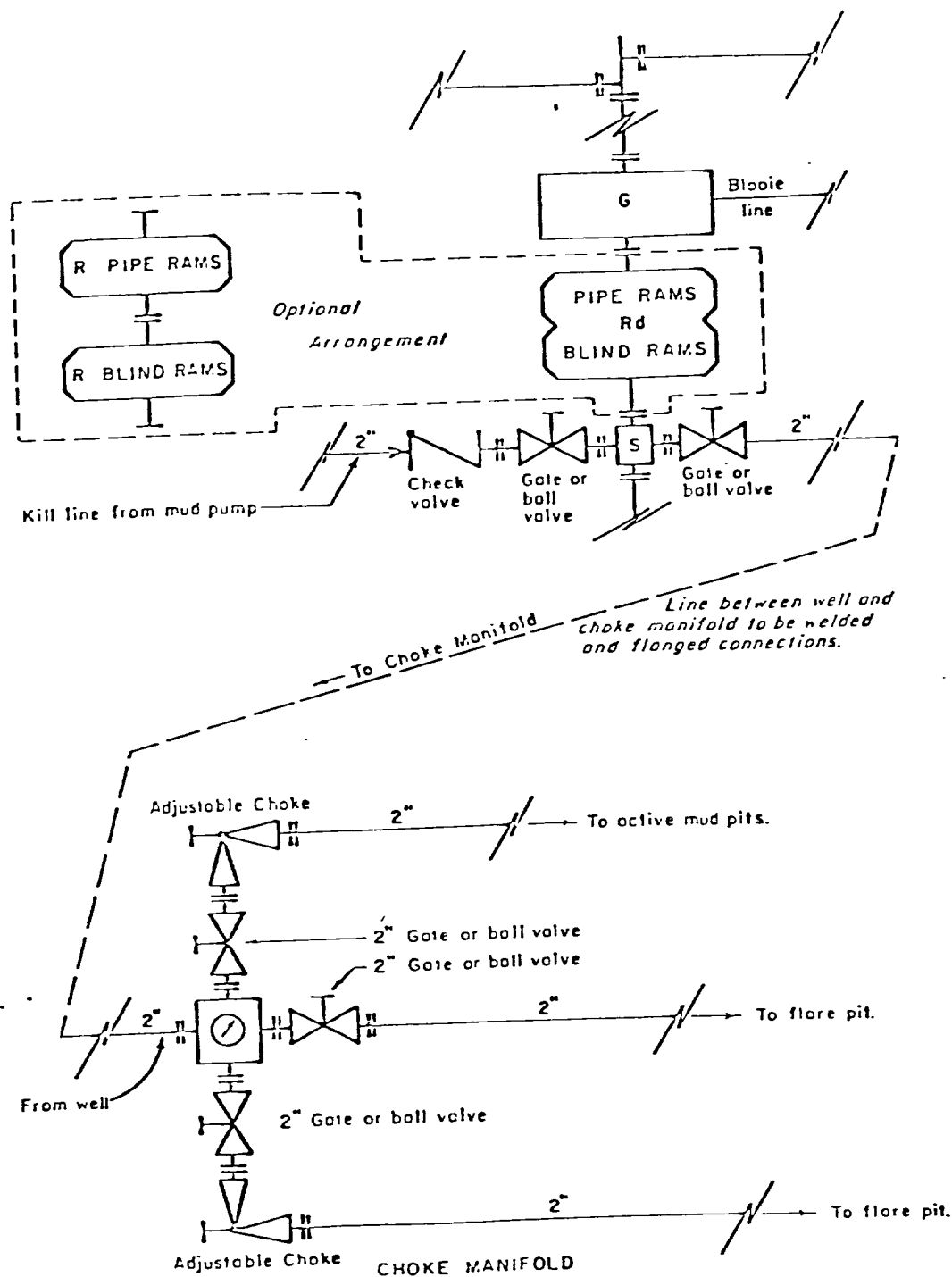
The yellow sheet of the IADC Report is to be filled out completely. The original copy of the drilling time recorder, and copies of any invoices from this well, signed and received for Tenneco Oil Company, will be mailed daily to:

TENNECO OIL COMPANY
ROCKY MOUNTAIN DIVISION
PENTHOUSE, 720 SOUTH COLORADO BOULEVARD
DENVER, COLORADO 80222

ATTENTION: Drilling Department

IN CASE OF EMERGENCY, NOTIFY THE FOLLOWING:

1. Mr. Don Barnes, Division Drilling Engineer.
2. Mr. George E. Ramsey, Jr., Drilling Engineers Supervisor
3. Mr. John W. Owen, Project Drilling Engineer.
4. Mr. Mike Lacey, Division Production Manager (Home 303-979-0509).

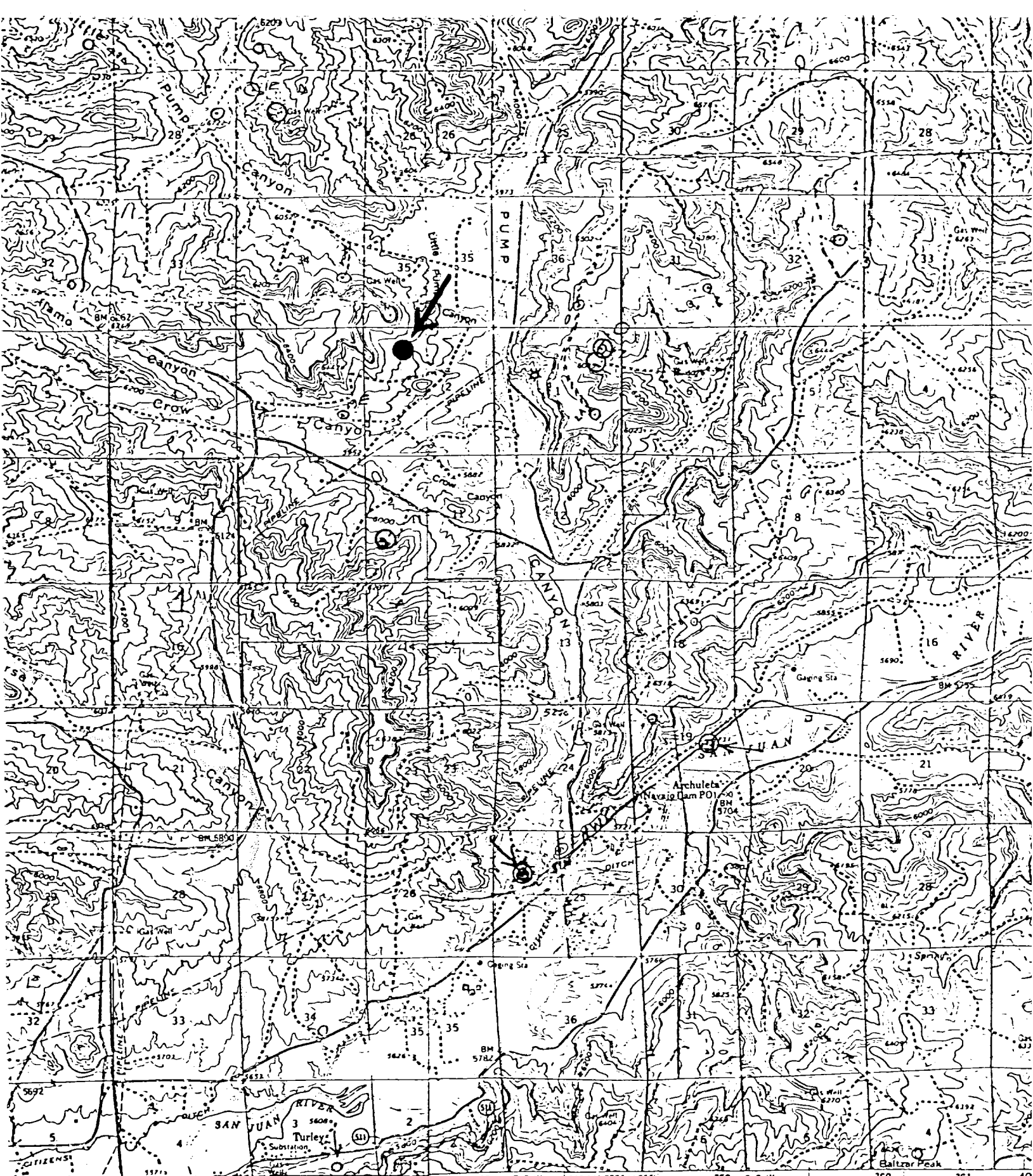


All equipment to be 3,000 psi working pressure except as noted.

- Rd Double ram type preventer with two sets of rams.
- R Single ram type preventer with one set of rams.
- S Drilling spool with side outlet connections for choke and kill lines.
- G Rotating head 150 psi working pressure minimum

ARRANGEMENT C

TENNECO OIL COMPANY
 ROCKY MOUNTAIN DIVISION
 REQUIRED MINIMUM
 BLOWOUT PREVENTER AND
 CHOKES MANIFOLD



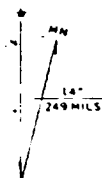
INTERIOR GEOLOGICAL SURVEY, WASHINGTON D.C. - 1972
 7.4 MI TO N.M.E.I.P.
 BLANCO 4.3 MI
 10745' 255 R. 9 W 1530000 FEET (WEST) 258 R. 8 W 260 261 40
 253000m E
 Mapped, edited, and published by the Geological Survey

Medium

Vicinity Map for
 TENNECO OIL COMPANY #2 TURNER B COM
 1000' FNL 1600' FWL Sec 2-T30N-R9W
 SAN JUAN COUNTY, NEW MEXICO

6000 meter Universal Transverse Mercator grid ticks,
 zone 11, shown

UTM GRID AND 1955 MAGNETIC NORTH
 DECLINATION AT CENTER OF SHEET



10

0

10

20

30

40

50

60

70

80

90

100

110

120

130

140

150

160

170

180

190

200

210

220

230

240

250

260

270

280

290

300

310

320

330

340

350

360

370

380

390

400

410

420

430

440

450

460

470

480

490

500

510

520

530

540

550

560

570

580

590

600

610

620

630

640

650

660

670

680

690

700

710

720

730

740

750

760

770

780

790

800

810

820

830

840

850

860

870

880

890

900

910

920

930

940

950

960

970

980

990

1000

1010

1020

1030

1040

1050

1060

1070

1080

1090

1100

1110

1120

1130

1140

1150

1160

1170

1180

1190

1200

1210

1220

1230

1240

1250

1260

1270

1280

1290

1300

1310

1320

1330

1340

1350

1360

1370

1380

1390

1400

1410

1420

1430

1440

1450

1460

1470

1480

1490

1500

1510

1520

1530

1540

1550

1560

1570

1580

1590

1600

1610

1620

1630

1640

1650

1660

1670

1680

1690

1700

1710

1720

1730

1740

1750

1760

1770

1780

1790

1800

1810

1820

1830

1840

1850

1860

1870

1880

1890

1900

1910

1920

1930

1940

1950

1960

1970

1980

1990

2000

2010

2020

2030

2040

2050

2060

2070

2080

2090

2100

2110

2120

2130

2140

2150

2160

2170

2180

2190

2200

2210

2220

2230

2240

2250

2260

2270

2280

2290

2300

2310

2320

2330

2340

2350

2360

2370

2380

2390

2400

2410

2420

2430

2440

2450

2460

2470

2480

2490

2500

2510

2520

2530

2540

2550

2560

2570

2580

2590

2600

2610

2620

2630

2640

2650

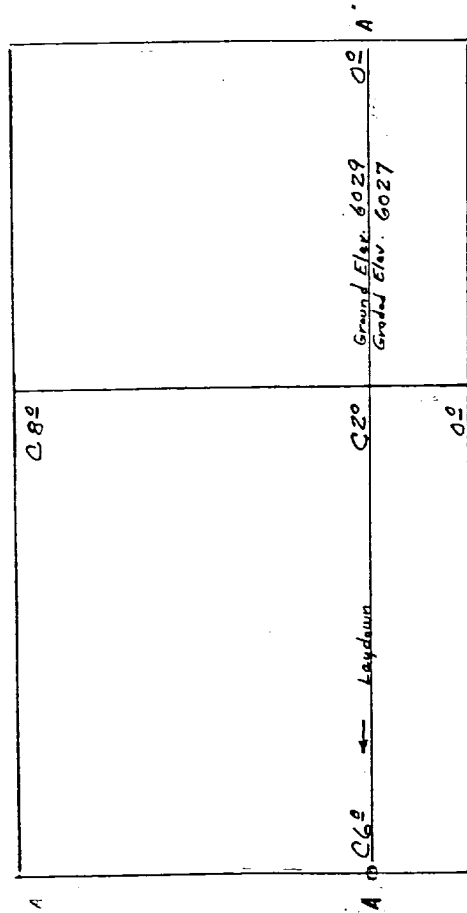
2660

2670

2680

2690

LOCATION FOLLIES FOR
 TENNECO OIL COMPANY #2 TURNER B CCM
 1000' FNL 1600' FNL Sec 2-T30N-R9W SAN JUAN COUNTY, NEW MEXICO



Vert. 1"=40' A-A' Horiz. 1"=100'

6030			
6020			
6010			

B-B' Horiz. 1"=100'

6030			
6020			
6010			

Vert. 1"=40' C-C' Horiz. 1"=100'

D-D' Horiz. 1"=100'

Reserve
 Pt
 F60
 X

KERR LAND SURVEYING
 Date: January 24, 1980