

NO. OF COPIES RECEIVED	
DISTRIBUTION	
SANTA FE	
FILE	
U.S.G.S.	
LAND OFFICE	
OPERATOR	

5A. Indicate Type of Lease
STATE ☐ FEE ☒

5. State Oil & Gas Lease No.

APPLICATION FOR PERMIT TO DRILL, DEEPEN, OR PLUG BACK

1a. Type of Work
DRILL ☒ DEEPEN ☐ PLUG BACK ☐

b. Type of Well
OIL WELL ☐ GAS WELL ☒ OTHER INFILL ☐ SINGLE ZONE ☒ MULTIPLE ZONE ☐

7. Unit Agreement Name

8. Form or Lease Name
Heath Gas Com "K"

2. Name of Operator
AMOCO PRODUCTION COMPANY

9. Well No.
IE

3. Address of Operator
501 Airport Drive, Farmington, New Mexico 87401

10. Field and Foot, or Wildcat
Basin Dakota

4. Location of Well
UNIT LETTER 0 LOCATED 940 FEET FROM THE South LINE
AND 1850 FEET FROM THE East LINE OF SEC. 32 TWP. 30N RGE. 9W

11. County
San Juan

15. Proposed Depth
7017'

19A. Formation
Dakota

20. Rotary or C.T.
Rotary

21. Elevations (show whether DE, RL, etc.)
5702' GL

21A. Kind & Status Plug. Bond
Statewide

21B. Drilling Contractor
Unknown

22. Approx. Date Work will start

23. PROPOSED CASING AND CEMENT PROGRAM

SIZE OF HOLE	SIZE OF CASING	WEIGHT PER FOOT	SETTING DEPTH	SACKS OF CEMENT	EST. TOP
12-1/4"	9-5/8"	H-40 32.3#	300'	300 sx	Surface
8-3/4"	7"	K-55 20#	2500'	400 sx	Surface
6-1/4"	4-1/2"	K-55 10.5#	7017'	420 sx	Surface

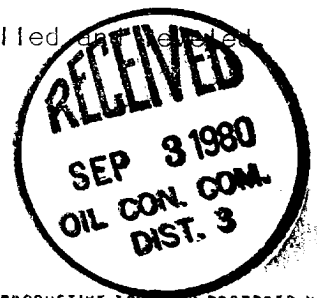
Amoco proposes to drill the above well to further develop the Basin Dakota reservoir. The well will be drilled to the surface casing point using native mud. The well will then be drilled to intermediate point with a low solids nondispersed mud system, and to final TD with gas or air. Completion design will be based on open hole logs. Copy of all logs will be filed upon completion. Amoco's standard blowout prevention will be employed; see attached drawing for blowout preventer design.

Upon completion the well location will be cleaned and the reserve pit filled and sealed.

Gas produced from this well is dedicated to El Paso Natural Gas Co.

APPROVAL VALID
FOR 90 DAYS UNLESS
DRILLING COMMENCED,

EXPIRES 12-2-80



IN ABOVE SPACE DESCRIBE PROPOSED PROGRAM; IF PROPOSAL IS TO DEEPEN OR PLUG BACK, GIVE DATA ON PRESENT PRODUCTIVE ZONE AND PROPOSED NEW PRODUCTIVE ZONE. GIVE BLOWOUT PREVENTER PROGRAM, IF ANY.

I hereby certify that the information above is true and complete to the best of my knowledge and belief.

Signed R. A. DOWNEY Title District Engineer Date August 29, 1980

(This space for State Use)

APPROVED BY Frank J. Aug TITLE SUPERVISOR DISTRICT #3 DATE SEP 3 1980

CONDITIONS OF APPROVAL, IF ANY:

OIL CONSERVATION DIVISION

P. O. BOX 2088

Form C-107
Revised 10-1-78

STATE OF NEW MEXICO

SANTA FE, NEW MEXICO 87501

ENERGY AND MINERALS DEPARTMENT

All distances must be from the outer boundaries of the Section.

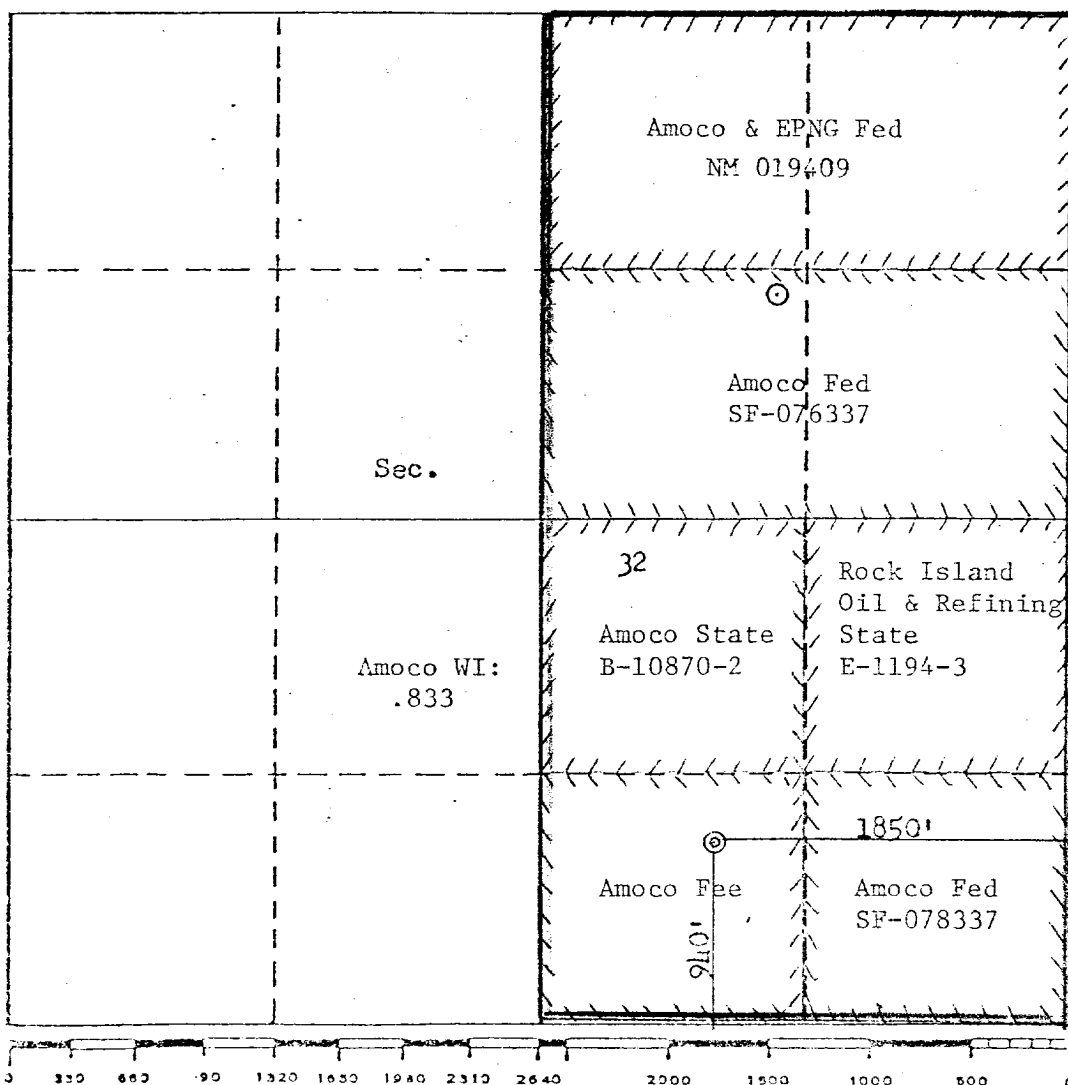
Operator AMOCO PRODUCTION COMPANY			Lease HEATH GAS COM "K"		Well No. 1E
Unit Letter 0	Section 32	Township 30N	Range 9W	County San Juan	
Actual Footage Location of Well: 940 feet from the South line and 1850 feet from the East line					
Ground Level Elev. 5702	Producing Formation Dakota	Pool Basin Dakota		Dedicated Acreage: 320 Acres	

1. Outline the acreage dedicated to the subject well by colored pencil or hatchure marks on the plat below.
2. If more than one lease is dedicated to the well, outline each and identify the ownership thereof (both as to working interest and royalty).
3. If more than one lease of different ownership is dedicated to the well, have the interests of all owners been consolidated by communitization, unitization, force-pooling, etc?

☒ Yes ☐ No If answer is "yes," type of consolidation Communitization

If answer is "no," list the owners and tract descriptions which have actually been consolidated. (Use reverse side of this form if necessary.)

No allowable will be assigned to the well until all interests have been consolidated (by communitization, unitization, forced-pooling, or otherwise) or until a non-standard unit, eliminating such interests, has been approved by the Commission.



CERTIFICATION

I hereby certify that the information contained herein is true and complete to the best of my knowledge and belief.

Name
R.A. DOWNEY
Position
DISTRICT ENGINEER
Company
AMOCO PRODUCTION COMPANY

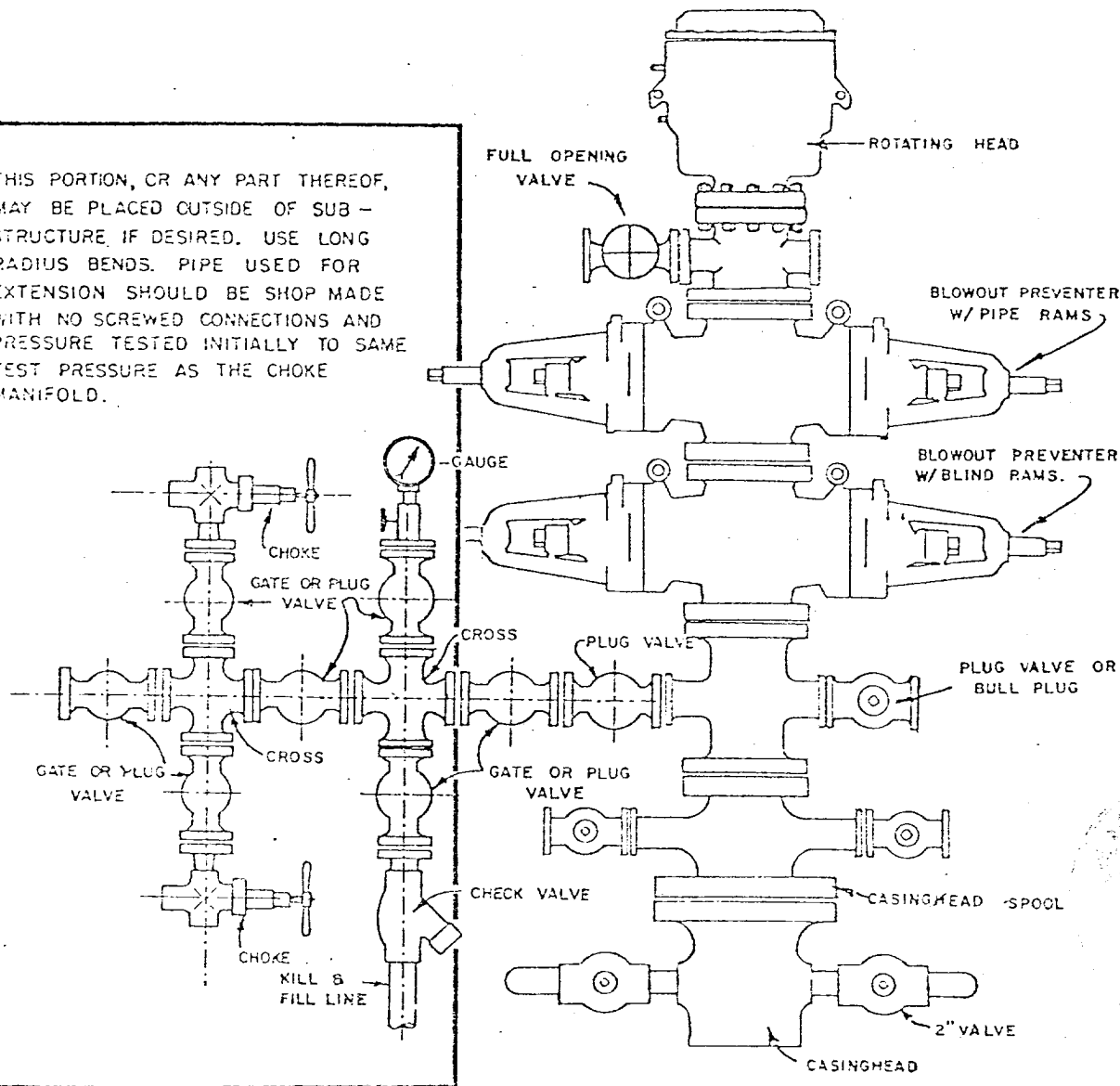
Date
AUGUST

I hereby certify that the well location shown on this plat was plotted from field notes or actual surveys made by me, or under my supervision, and that the same is true and correct to the best of my knowledge and belief.

Date Surveyed
August 11, 1980
Registered Professional Engineer
and/or Land Surveyor
Fred B. Kerr Jr.
Certificate No.
39500

1. Blowout Preventers and Master Valve to be fluid operated, and all fittings must be in good condition.
2. Equipment through which bit must pass shall be as large as the inside diameter of the casing that is being drilled through.
3. Nipple above Blowout Preventer shall be same size or larger than BOP being drilled through.
4. All fittings to be flanged.
5. Omsco or comparable safety valve must be be available on rig floor at all times with proper connection or sub. The I.D. of safety valve should be as great as I.D. of tool joints of drill pipe, or at least as great as I.D. of drill collars.

THIS PORTION, OR ANY PART THEREOF, MAY BE PLACED OUTSIDE OF SUB - STRUCTURE, IF DESIRED. USE LONG RADIUS BENDS. PIPE USED FOR EXTENSION SHOULD BE SHOP MADE WITH NO SCREWED CONNECTIONS AND PRESSURE TESTED INITIALLY TO SAME TEST PRESSURE AS THE CHOKE MANIFOLD.



BLOWOUT PREVENTER HOOKUP

API Series # 900

EXHIBIT D-4

OCTOBER 16, 1969

Operation of BOP by closing both pipe and blind rams will be tested each trip or, on long bit runs, pipe rams will be closed once each 24 hours.