

UNITED STATES
DEPARTMENT OF THE INTERIOR
GEOLOGICAL SURVEY

APPLICATION FOR PERMIT TO DRILL, DEEPEN, OR PLUG BACK

1A. TYPE OF WORK

DRILL ☒DEEPEN ☐PLUG BACK ☐

B. TYPE OF WELL

OIL
WELL ☐GAS
WELL ☒

OTHER

SINGLE
ZONE ☒MULTIPLE
ZONE ☐

2. NAME OF OPERATOR

Tenneco Oil Company

3. ADDRESS OF OPERATOR

P.O. Box 3249, Englewood, Colorado 80155

4. LOCATION OF WELL (Report location clearly and in accordance with any State requirements.)*

At surface

1010 FSL, 1810 FWL

At proposed prod. zone

same as above

14. DISTANCE IN MILES AND DIRECTION FROM NEAREST TOWN OR POST OFFICE*

Approximately 9 miles NE of Blanco, N.M.

10. DISTANCE FROM PROPOSED*

LOCATION TO NEAREST
PROPERTY OR LEASE LINE, FT.
(Also to nearest drig. unit line, if any)

830'

16. NO. OF ACRES IN LEASE

200

17. NO. OF ACRES ASSIGNED
TO THIS WELL

160

18. DISTANCE FROM PROPOSED LOCATION*

TO NEAREST WELL, DRILLING, COMPLETED,
OR APPLIED FOR, ON THIS LEASE, FT.

19. PROPOSED DEPTH

±2720

20. ROTARY OR CABLE TOOLS

Rotary

21. ELEVATIONS (Show whether DF, RT, GR, etc.)

5875' GR

22. APPROX. DATE WORK WILL START*

February 1981

23.

PROPOSED CASING AND CEMENTING PROGRAM

SIZE OF HOLE	SIZE OF CASING	WEIGHT PER FOOT	SETTING DEPTH	QUANTITY OF CEMENT
12 1/4"	8 5/8" new	24#	±200	Circulate to surface
7 7/8"	5 1/2" new	15.5#	±2720	Circulate to surface

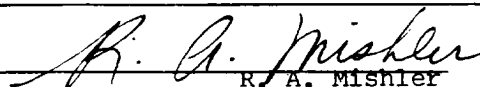
See attached.

The gas is dedicated.

IN ABOVE SPACE DESCRIBE PROPOSED PROGRAM: If proposal is to deepen or plug back, give data on present productive zone and proposed new productive zone. If proposal is to drill or deepen directionally, give pertinent data on subsurface locations and measured and true vertical depths. Give blowout preventer program, if any.

24.

SIGNED


R. A. Mishler

TITLE

Sr. Production Analyst

December 11, 1980

(This space for Federal or State office use)

PERMIT NO.

APPROVAL DATE

APPROVED BY

TITLE

DATE

CONDITIONS OF APPROVAL, IF ANY:

*See Instructions On Reverse Side

OIL CONSERVATION DIVISION

P. O. BOX 2088

SANTA FE, NEW MEXICO 87501

Form C-107
Revised 10-1-78

STATE OF NEW MEXICO

ENERGY AND MINERALS DEPARTMENT

All distances must be from the outer boundaries of the Section.

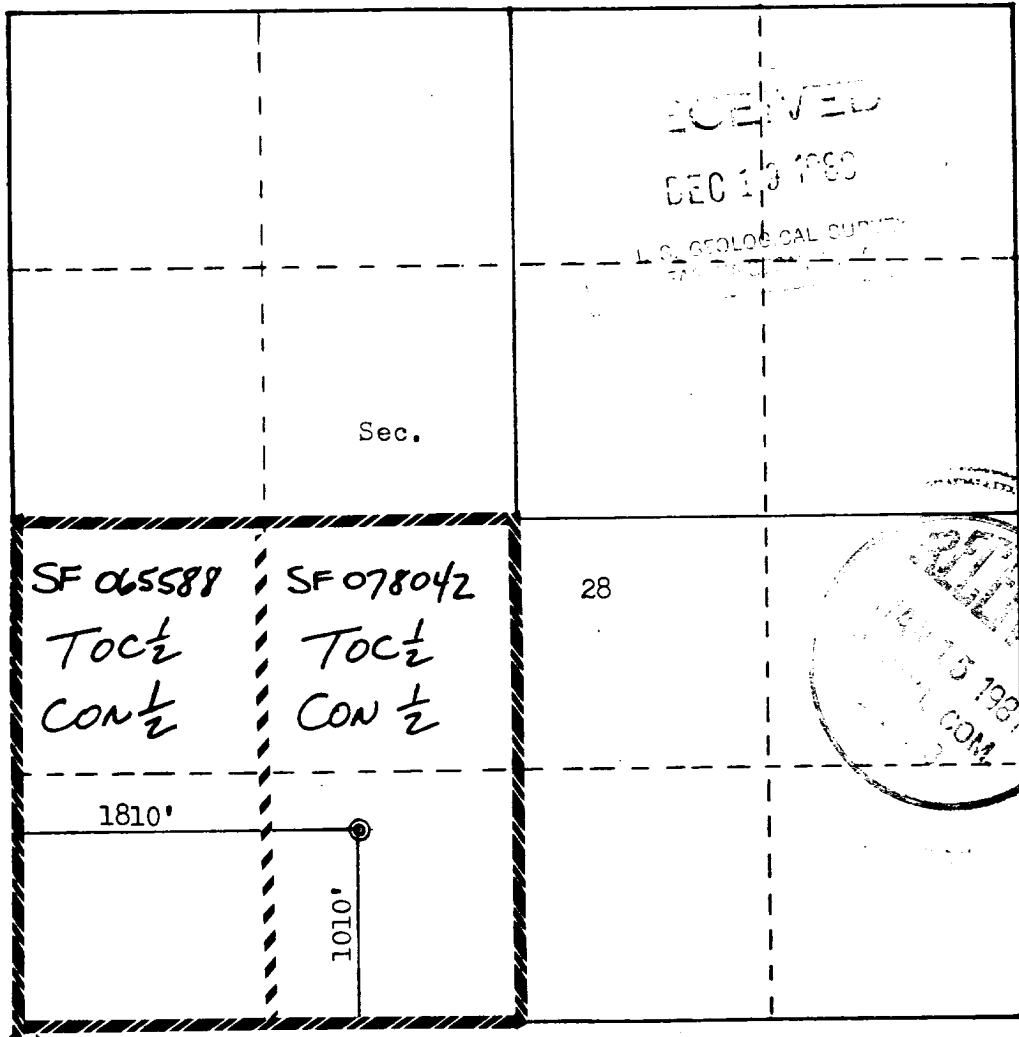
Operator TENNECO OIL COMPANY			Lease GIOMI COM A		Well No. 1R
Unit Letter N	Section 28	Township 30N	Range 9W	County San Juan	
Actual Footage Location of Well: 1010 feet from the South line and 1810 feet from the West line					
Ground Level Elev: 5875		Producing Formation PICTURED CLIFFS	Pool BLANCO PICTURED CLIFFS	Dedicated Acreage: 160 Acres	

1. Outline the acreage dedicated to the subject well by colored pencil or hachure marks on the plat below.
2. If more than one lease is dedicated to the well, outline each and identify the ownership thereof (both as to working interest and royalty).
3. If more than one lease of different ownership is dedicated to the well, have the interests of all owners been consolidated by communitization, unitization, force-pooling, etc?

☒ Yes ☐ No If answer is "yes," type of consolidation COMMUNITIZATION

If answer is "no," list the owners and tract descriptions which have actually been consolidated. (Use reverse side of this form if necessary.) _____

No allowable will be assigned to the well until all interests have been consolidated (by communitization, unitization, forced-pooling, or otherwise) or until a non-standard unit, eliminating such interests, has been approved by the Commission.



Scale: 1"=1000'

CERTIFICATION

I hereby certify that the information contained herein is true and complete to the best of my knowledge and belief.

R. A. Mishler
Name

R. A. Mishler

Position
Sr. Production Analyst

Company
Tenneco Oil Company

Date
December 11, 1980

I hereby certify that the well location shown on this plat was plotted from field notes of actual surveys made by me or under my supervision, and that the same is true and correct to the best of my knowledge and belief.

Date Surveyed
October 10, 1980
Registered Professional Engineer
and Land Surveyor

Fred B. Kere Jr.
Fred B. Kere Jr.

Certificate No.
3950

TENNECO OIL COMPANY
ROCKY MOUNTAIN DIVISION
PENTHOUSE, 720 SOUTH COLORADO BOULEVARD
DENVER, COLORADO 80222

DRILLING PROCEDURE

DATE: September 8, 1980

LEASE: Giomi Com

WELL NO.: A-1R

LOCATION: 1010 FSL, 1810 FWL
Sec. 28, T30N, R9W
San Juan County, New Mexico

FIELD: Blanco Pictured Cliffs

ELEVATION: 5875 Est. G.L.

TOTAL DEPTH: 2720

PROJECTED HORIZON: Pictured Cliffs

SUBMITTED BY: Dale Kardash

DATE: September 8, 1980

APPROVED BY: John W. Quinn

DATE: 9/15/80

CC: Administration
DSB Well File
Field File

ESTIMATED FORMATION TOPS

G.L.	5880	
Ojo	1440	Water
Fruitland	2200	Gas
Pictured Cliffs	2545	Gas
Lewis	2655	
TD	2720	

MUD PROGRAM

0-200 Spud Mud.
200-2720 Low solid, resh water mud (water and Benex). Mud up prior to running casing.

EVALUATION

Cores and DST's:

None

Deviation Surveys:

1. Survey surface hole at 100' intervals. Maximum allowable deviation.
2. FROM SURFACE TO TOTAL DEPTH DEVIATION SURVEYS MUST BE TAKEN EVERY 500' OR EACH TRIP WHICHEVER IS FIRST. This may entail running the TOTCO on wireline. Record each survey on the AAODC Drilling Report Sheet. Maximum allowable change in deviation is 1" per 100'.

Samples: As requested by Wellsite Geological Engineer.

Well Surveys:

Open hole logs: DIL/GR, FDC/CNL/GR - Caliper, T.D. to surface.

BOP: 11" - 3000 BOP to comply with TOC requirements as shown in BOE arrangement, Figure C.

PREVENTEORS MUST BE CHECKED FOR OPERATION EVERY 24 HOURS, AND THE CHECK MUST BE RECORDED ON THE AAODC DRILLING REPORT SHEET.

DRILLING, CASING, AND CEMENT PROGRAM

1. MIRURT. Drill a 12 1/4" hole to \pm 200 with Gel-Water Mud.
2. RU and run 8 5/8", 24#, K-55, ST&C casing to T.D. Cement with Class B + 2% CaCl₂ in sufficient quantity to circulate cement to surface. WOC 12 hours.
3. Screw on 8 5/8", 8rd x 11-3000 casing head, NU BOP's. Pressure test casing, lines, and blinds to 1000 PSI for 30 minutes. TIH with drill pipe and test pipe rams to 1000 PSI for 30 minutes. Record all tests on IADC Report.
4. Drill out using a 7 7/8" bit and clear water. Drill to T.D. mud up prior to reaching TD. Lob open hole as requested by G.E. Department.
5. RU and run 5 1/2", 15.50#, K-55, ST&C, casing to TD. Cement with 50/50 pozmix + 4% gel and tail in with 150 sx Class B. Circulate cement to surface.
6. Set slips and cut off casing. MORT.
7. Install tree and fence reserve pit.
8. If non-productive, P & A as required by the U.S.G.S.

Casing Program

<u>Interval</u>	<u>Length</u>	<u>Size</u>	<u>Weight</u>	<u>Grade</u>	<u>Coupling</u>
0-200	200'	8 5/8"	24#	K-55	STC
200-2720	2520'	5 1/2"	15.5#	K-55	STC

TENNECO OIL COMPANY - 10 POINT PLAN

1. The geological name of the surface formation: *San Jose*
- 2 & 3. Estimated Formation Tops:

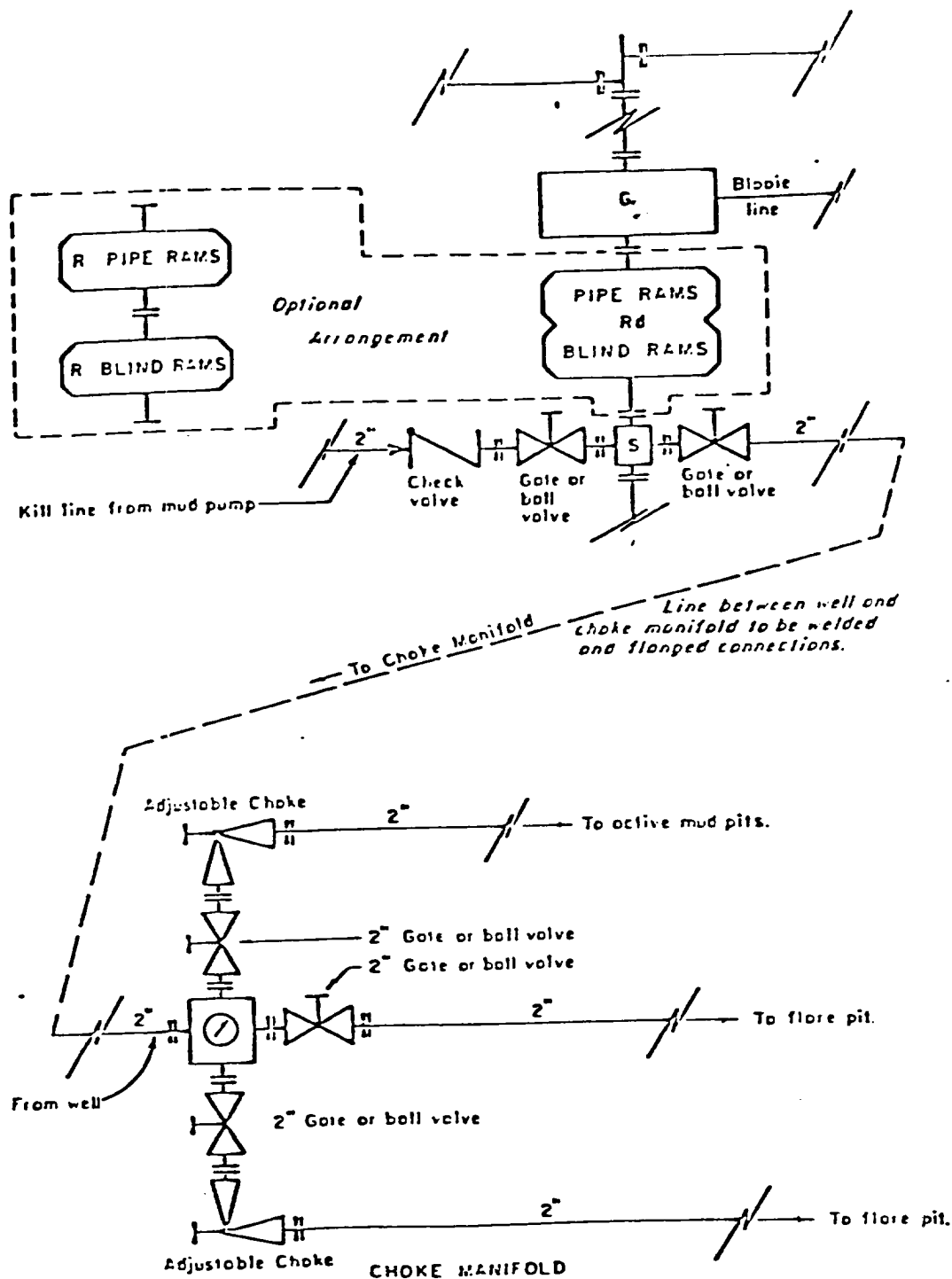
(See Attached Drilling Procedure)
4. Proposed Casing Program:

(See Attached Drilling Procedure)
5. Blowout Preventors:
Hydraulic double ram. One set of rams will be provided each size drill pipe in the hole. One set of blind rams at all times. Fill line will be 2", kill line will be 2", choke relief line will be 2". BOP's, drills and tests will be recorded in the driller's log. BOP will be tested every 24 hours and recorded in IADC Log.
6. Mud Program: (Sufficient quantity of mud and weight material will be available on location).

(See Attached Drilling Procedure.)
7. Auxiliary Equipment:
 - a. Kelly cock will be in use at all times.
 - b. Stabbing valve to fit drill pipe will be present on floor at all times.
 - c. Mud monitoring will be visual. No abnormal pressures are anticipated.
 - d. Floats at bits.
 - e. Drill string safety valve(s) to fit all pipe in drill string will be maintained on the rig floor while drilling operations are in progress.
8. Coring, Logging, and Testing Program:

(See Attached Drilling Procedure)
9. No abnormal pressures, temperatures or potential hazards such as H₂S are expected to be encountered.
10. The drilling of this well will start approximately *February 8th* and continue for 10 to 12 days.

Your office will be notified of spudding in sufficient time to witness cementing operations. Immediate notice will be given on blowouts, fires, spills, and accidents involving life threatening injuries or loss of life. Prior approval will be obtained before appreciably changing drilling program or commencing plugging operations, plug back work, casing repair work or corrective cementing operations.



All equipment to be 3,000 psi working pressure except as noted.

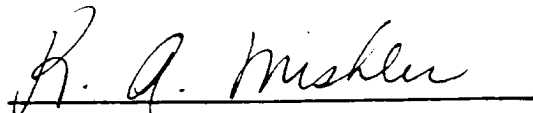
- Rd Double ram type preventer with two sets of rams.
- R Single ram type preventer with one set of rams.
- S Drilling spool with side outlet connections for choke and kill lines.
- G Rotating head 150 psi working pressure minimum

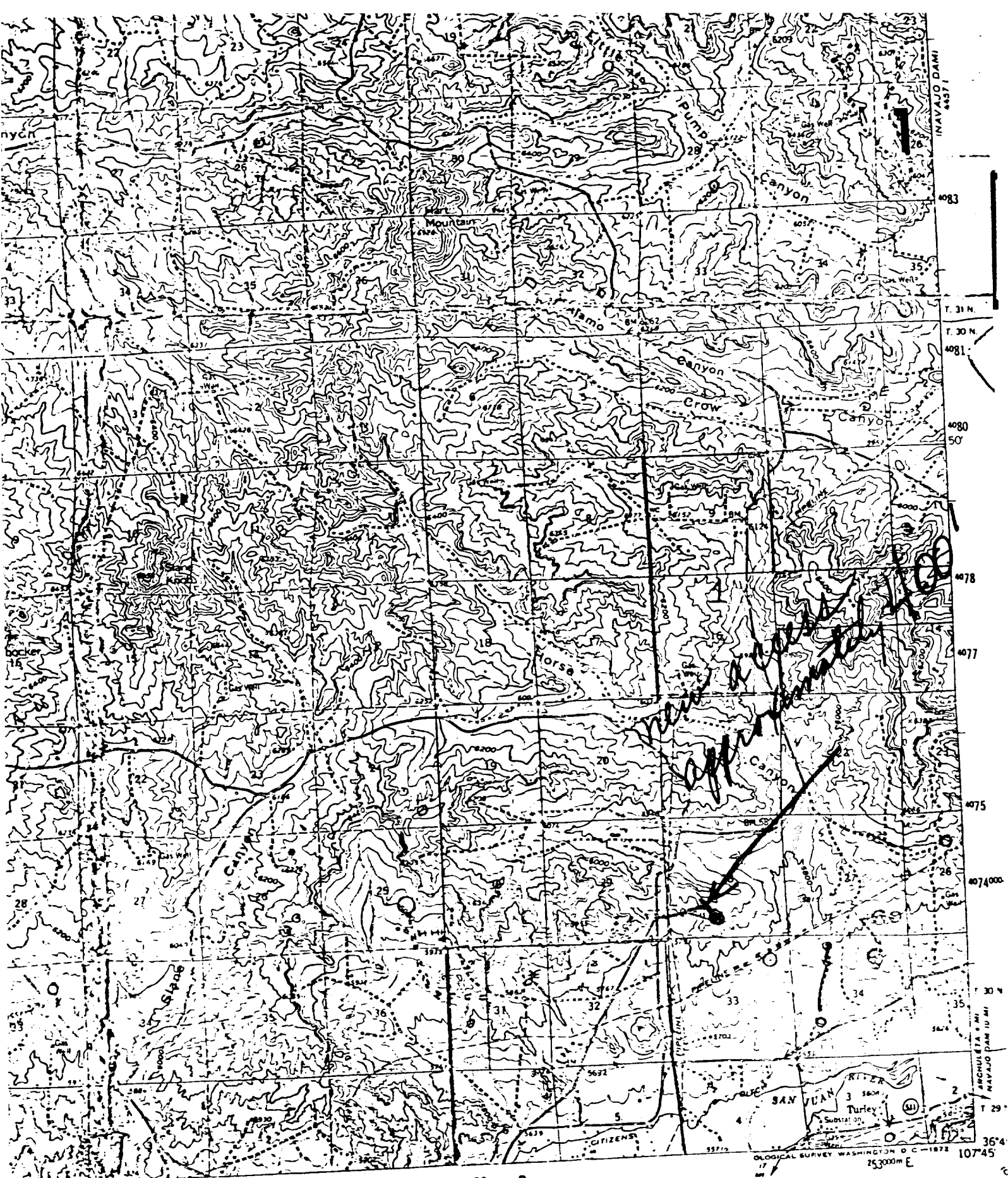
ARRANGEMENT C

TENNECO OIL COMPANY
 ROCKY MOUNTAIN DIVISION
 REQUIRED MINIMUM
 BLOWOUT PREVENTER AND
 CHOKE MANIFOLD

1. Existing Road - Please refer to Map No. 1 which shows the existing roads. New roads which will be required have been marked on this map. All existing and new roads will be properly maintained during the duration of this project.
2. Planned Access Roads - Please refer to Map No. 1. The grade of the access roads will be consistent with that of the local terrain. The road surface will not exceed twenty feet (20') in width. Upon completion of the project, the access road will be adequately drained to control soil erosion. Drainage facilities may include ditches, water bars, culverts or any other measure deemed necessary by trained Company personnel to insure proper drainage. Gates and/or cattleguards will be installed if necessary.
3. Location of Existing Wells - Please refer to Map No. 2.
4. Location of Tank Batteries, Production Facilities, and Production Gathering and Service Lines - Please refer to Maps No. 1 and No. 2. Map No. 2 shows the existing roads and new proposed access roads. All known production facilities are shown on these two maps.
5. Location and Type of Water Supply - Water for the proposed project will be obtained from a private source.
6. Source of Construction Materials - No additional materials will be required to build either the access road or the proposed location.
7. Methods of Handling Waste Materials - All garbage and trash materials will be put into a burn pit shown on the attached Location Plat No. 1. When clean-up operations are begun on the proposed project, the burn pit with its refuse will be buried to a depth of at least three feet (3'). A latrine, the location of which is also shown on Plat No. 1. will be provided for human waste. If large amounts of liquids are left in the reserve pit after completion of the project, the pit will be fenced until the liquids have had adequate time to dry. The location clean-up will not take place until such time as the reserve pit can be properly covered over to prevent run-off from carrying any of these materials into the watershed. No earthen pit will be located on natural drainage; all earthen pits will be so constructed as to prevent leakage from occurring.

8. Ancillary Facilities - No camps or airstrips will be associated with this project.
9. Wellsite Layout - Please refer to the attached Plat No. 1.
10. Plans for Restoration of the Surface - After completion of the proposed project the location will be cleaned and leveled. The location will be left in such a condition that will enable reseeded operations to be carried out. Seed mixture as designated by the responsible government agency will be used. The reseeded operation will be performed during the time period set forth by the regulatory body. The location production equipment will be painted as designated by the responsible government agency.
11. Other Information - Location is on gently rolling hills. Soil is sandy clay. Drainage is to the SE. Vegetation includes pinon & juniper, sage, and rabbitbrush.
12. Operator's Representative - See drilling prognosis.
13. Certification - I hereby certify that I, or persons under my direct supervision, have inspected the proposed drillsite and access route; that I am familiar with the conditions which presently exist; that the statements made in this plan are, to the best of my knowledge, true and correct; and that the work associated with the operations proposed herein will be performed by Tenneco Oil Company and its contractors and sub-contractors in conformity with this plan and the terms and conditions under which it is approved.


R. A. Mishler
Sr. Production Analyst



Vicinity Map for
TENNECO OIL CO. #GIOMI COM "A" (R)
1010' FSL 1810' FWL Sec. 28-T30N-R9W
SAN JUAN COUNTY, NEW MEXICO

ROAD CLASSIFICATION
— Light duty
Unimproved dirt
U.S. Route State Route

1:62500
CONT. INTERVAL 40 FEET
SAN JUAN COUNTY, NEW MEXICO

