

UNITED STATES
DEPARTMENT OF THE INTERIOR
GEOLOGICAL SURVEY

APPLICATION FOR PERMIT TO DRILL, DEEPEN, OR PLUG BACK

1a. TYPE OF WORK

DRILL ☒DEEPEN ☐PLUG BACK ☐

b. TYPE OF WELL

OIL
WELL ☐GAS
WELL ☒OTHER ☐SINGLE
ZONE ☐MULTIPLE
ZONE ☐

2. NAME OF OPERATOR

Supron Energy Corporation

3. ADDRESS OF OPERATOR

P.O. Box 808, Farmington, New Mexico 87401

4. LOCATION OF WELL (Report location clearly and in accordance with any State requirements.)*

At surface 900 Ft./South line and 1350 ft./East line

At proposed prod. zone Same as above

11. DISTANCE IN MILES AND DIRECTION FROM NEAREST TOWN OR POST OFFICE*

5 Miles North of Flora Vista New Mexico

15. DISTANCE FROM PROPOSED*

LOCATION TO NEAREST
PROPERTY OR LEASE LINE, FT.
Also to nearest drilg. unit line, if any:

790 Ft.

16. NO. OF ACRES IN LEASE

638.80

18. DISTANCE FROM PROPOSED LOCATION*

TO NEAREST WELL DRILLING, COMPLETED,
OR APPLIED FOR, ON THIS LEASE, FT.

3,390 Ft.

19. PROPOSED Casing

6770

17. NO. OF ACRES ASSIGNED
TO THIS WELL

E/2 319.70

20. ROTARY OR CABLE TOOLS

Rotary

21. ELEVATIONS (Show whether DF, RT, GR, etc.)

5834 GR

12. COUNTY OR PARISH 13. STATE

San Juan

New Mexico

22. APPROX. DATE WORK WILL START*

April 1, 1981

PROPOSED CASING AND CEMENTING PROGRAM

SIZE OF HOLE	SIZE OF CASING	WEIGHT PER FOOT	SETTING DEPTH	QUANTITY OF CEMENT
12-1/4"	8-5/8"	24.00	250 Ft.	150 Sx. Circulated
7-7/8"	4-1/2"	10.50	6770 Ft.	1200 Sx. 3 Stages
DRILLING AND CEMENTING ARE SUBJECT TO ADMINISTRATIVE APPROVAL TO 30 CFR 290.				

We desire to drill 12-1/4" hole to approximately 250 feet with natural mud. Run new 8-5/8" 24.0 # casing and cement. Cement to be circulated to the surface. Pressure test the casing. Drill out with 7-7/8" bit & drill to approx. 6770 feet with mud. Log the well. Run 4-1/2", 10.50# casing & cement in three stages, with the 3rd stage cmt. covering the Ojo Alamo zone. Drill the stage tool out. Perforate the Dakota zone & fracture to stimulate production. Clean the well up. Run tbgs. to approx. 6550 ft. & nipple down the well head. Test the well & connect to a gathering system.

This gas has been previously dedicated to a transporter.

IN ABOVE SPACE DESCRIBE PROPOSED PROGRAM: If proposal is to deepen or plug back, give data on present productive zone and proposed new productive zone. If proposal is to drill or deepen directionally, give pertinent data on subsurface locations and measured and true vertical depths. Give blowout preventer program, if any.

24.

SIGNED

Rudy D. Motto

TITLE

Area Superintendent

OIL CON. COM.

DIST. 3

December 17, 1980

(This space for Federal or State office use)

PERMIT NO.

APPROVAL DATE

APPROVED BY

TITLE

DATE

CONDITIONS OF APPROVAL, IF ANY:

for *Burch Wamsley*
oh 3m

**NEW MEXICO OIL CONSERVATION COMMISSION
WELL LOCATION AND ACREAGE DEDICATION PLAT**

Form C-102
Supersedes C-12
Effective 1-1-65

All distances must be from the outer boundaries of the Section.

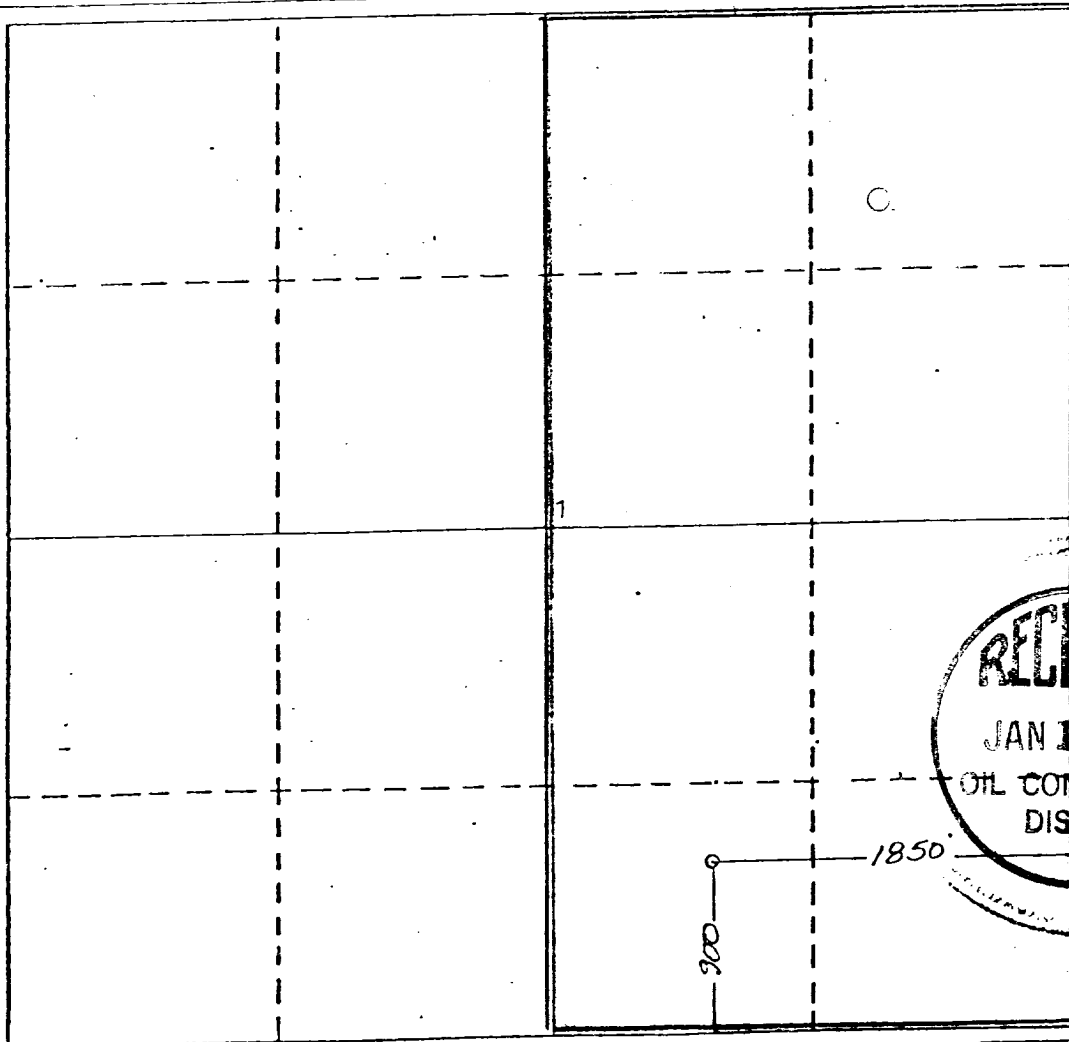
Operator SUPRON ENERGY CORPORATION			Lease REID "A"		Well No. 1-E
Unit Letter 0	Section 1	Township 30 NORTH	Range 13 WEST	County SAN JUAN	
Actual Footage Location of Well: <div style="display: flex; justify-content: space-between;"> 900 feet from the SOUTH line and 1850 feet from the EAST line </div>					
Ground Level Elev. 5834	Producing Formation Dakota		Pool Basin		Dedicated Acreage: E 319.70 Acres

1. Outline the acreage dedicated to the subject well by colored pencil or hatchure marks on the plat below.
2. If more than one lease is dedicated to the well, outline each and identify the ownership thereof (both as to working interest and royalty).
3. If more than one lease of different ownership is dedicated to the well, have the interests of all owners been consolidated by communitization, unitization, force-pooling, etc?

☐ Yes ☐ No If answer is "yes," type of consolidation _____

If answer is "no," list the owners and tract descriptions which have actually been consolidated. (Use reverse side of this form if necessary.) _____

No allowable will be assigned to the well until all interests have been consolidated (by communitization, unitization, forced-pooling, or otherwise) or until a non-standard unit, eliminating such interests, has been approved by the Commission.



CERTIFICATION

I hereby certify that the information contained herein is true and complete to the best of my knowledge and belief.

Rudy D. Motto
Name

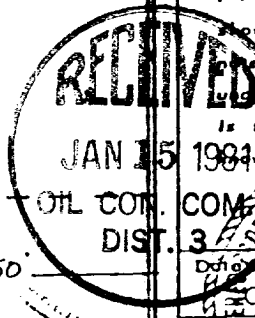
Rudy D. Motto
Position

Area Superintendent
Company

SUPRON ENERGY CORPORATION
Date

October 16, 1980

I hereby certify that the well location shown on this plat was plotted from field notes of actual surveys made by me or under my supervision, and that the same is true and correct to the best of my knowledge and belief.



PROFESSIONAL ENGINEER & LAND SURVEYOR
STATE OF NEW MEXICO
 No. **1463**
JAMES P. LEESE
 Certificate No. **1463**

SUPRON ENERGY CORPORATION

POST OFFICE BOX 808

FARMINGTON, NEW MEXICO 87401

December 17, 1980

United States Geological Survey
P.O. Box 959
Farmington, New Mexico 87401

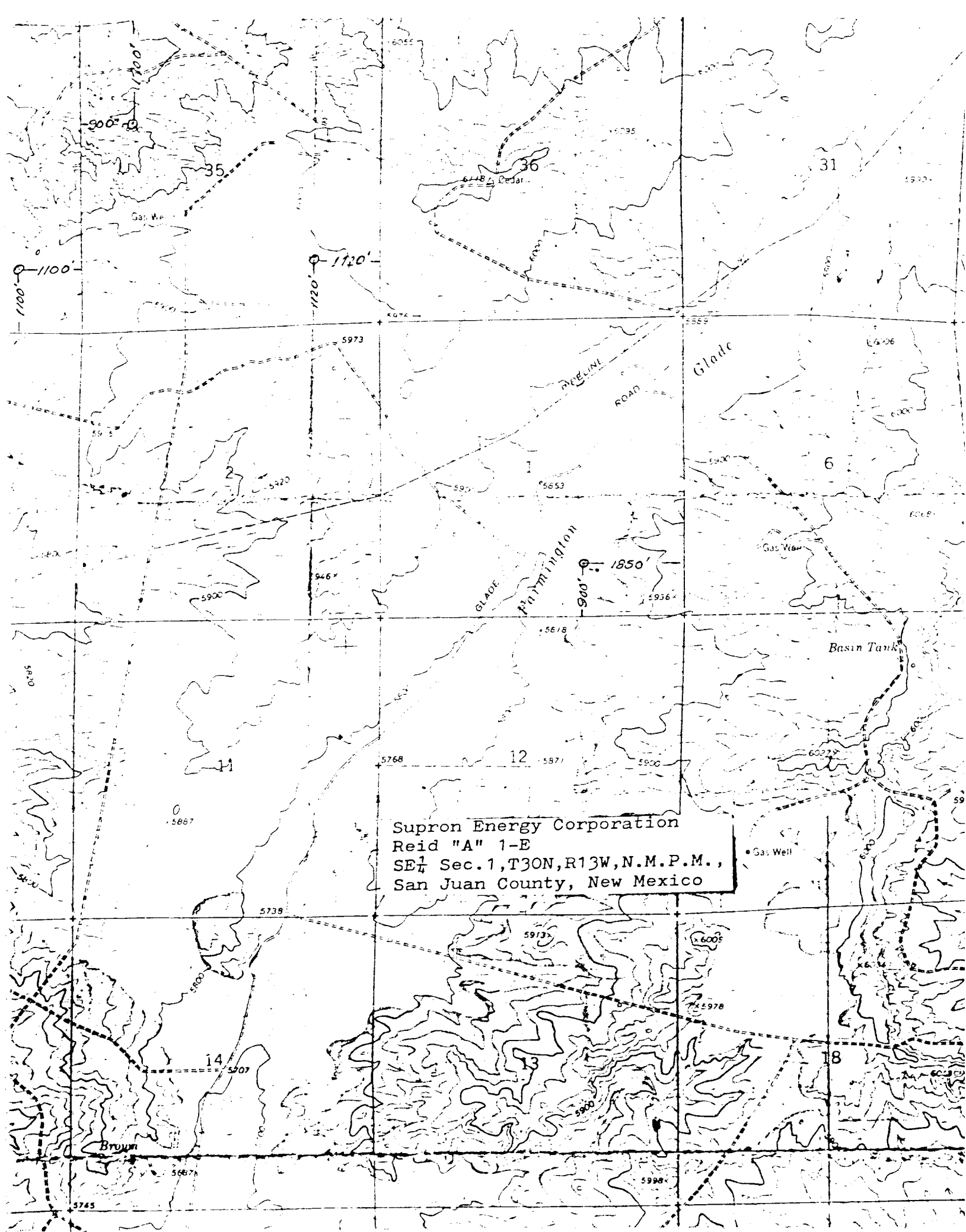
Attention: Mr. James Sims

Dear Sir:

Supron Energy Corporation proposes to drill the Reid "A" No. 1-E well located 900 feet from the South line and 1850 feet from the West line of Section 1, Township 30 North, Range 13 West, N.M.P.M., San Juan County, New Mexico.

The following attachments are included with this application:

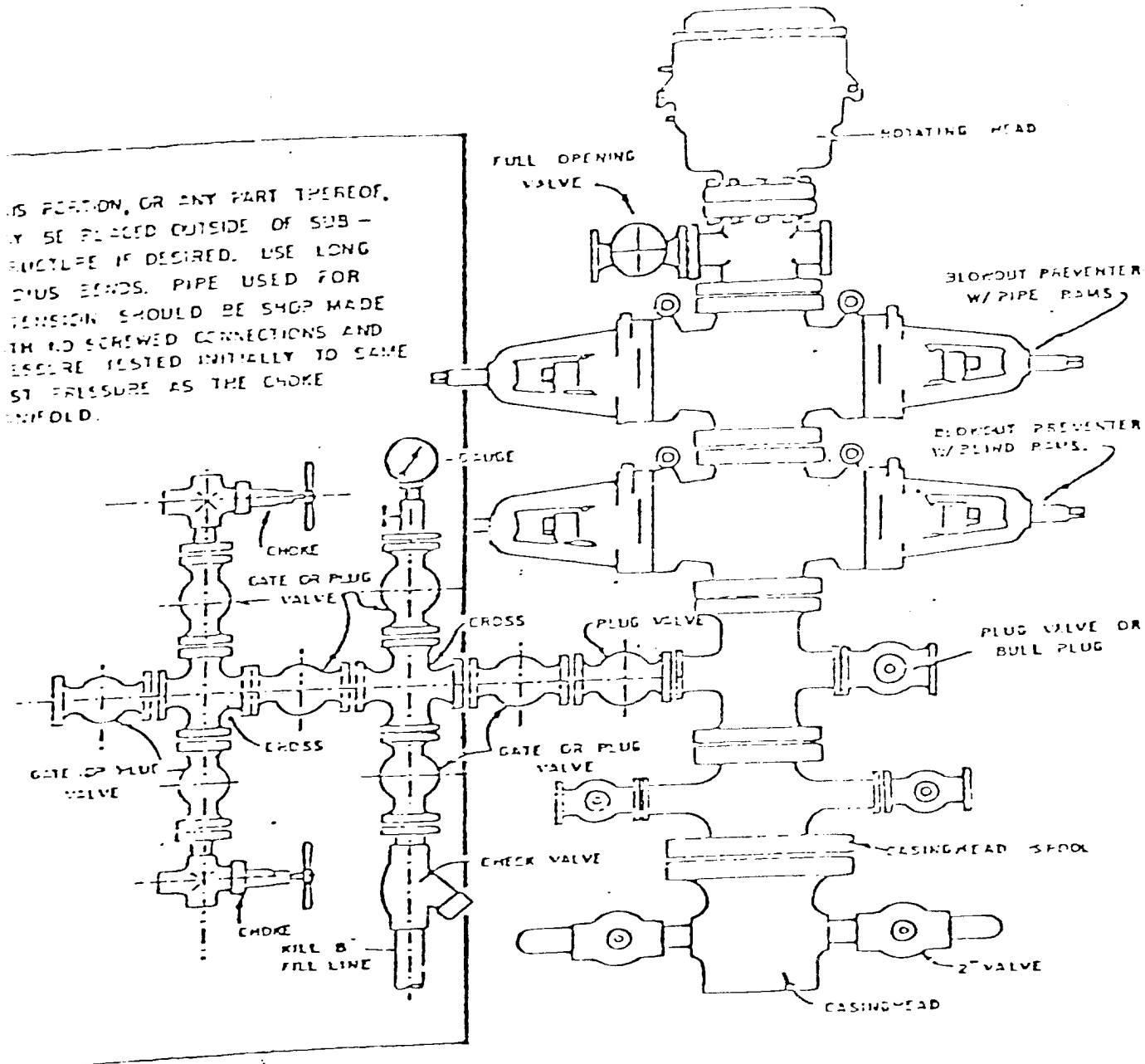
1. Map of existing roads.
2. The access road is to be 20 feet wide and approximately 1200 feet long approaching the location from the Southwest.
3. Location of existing wells.
4. Lateral roads to well locations.
5. Location of surface equipment if required.
6. Drilling and completion water will be obtained from our water well in Wild Horse Canyon.
7. Waste will be disposed of by being placed in the reserve pit and buried upon completion of the well.
8. There will be no camp at or near the well site.
9. There will be no air strip.
10. A plat is attached showing the location of the rig, mud tanks, reserve pit, burn pit and etc.
11. A letter of certification is attached. The operator representative, for compliance purposes, is Rudy D. Motto, Area Superintendent, P.O. Box 808, Farmington, New Mexico. Phone (505) 325-3587.
12. After the well is completed the location will be cleaned up and bladed. The reserve pit will be allowed to dry then it will be filled and restored to its natural state.
13. The soil is sandy loam with the principal vegetation being sagebrush, greasewood, snakeweed, and russian thistle.



Supron Energy Corporation
Reid "A" 1-E
SE $\frac{1}{4}$ Sec. 1, T30N, R13W, N.M.P.M.,
San Juan County, New Mexico

Blowout Preventer will be tested daily and prior to drilling out with the results to be logged on the drillers report.

The B.O.P. and all valve and fittings are rated at 3000 psi working pressure, and hydraulically operated



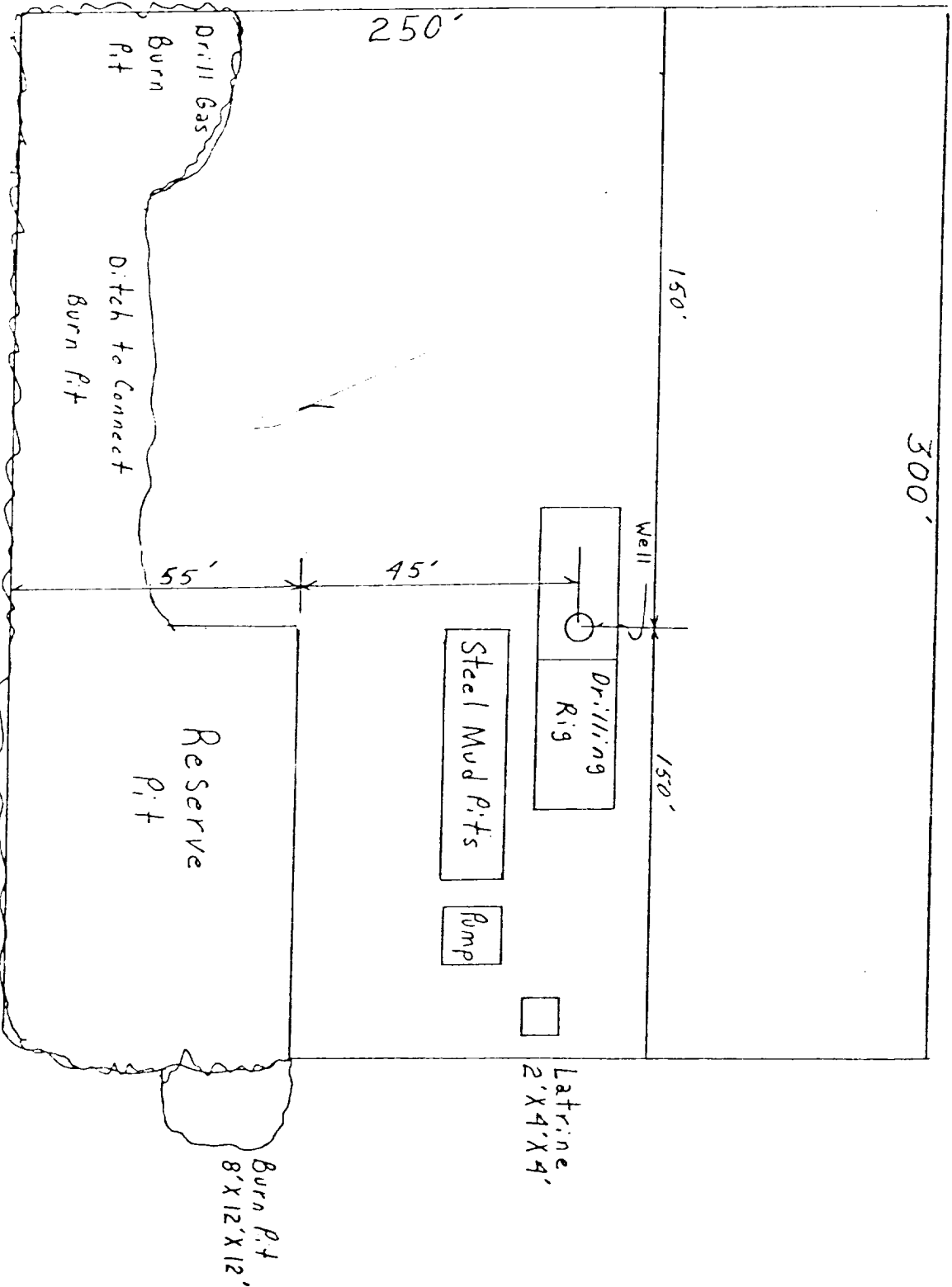
BLOWOUT PREVENTER HOOKUP

LOCATION AND EQUIPMENT LAYOUT

SUPRON ENERGY CORPORATION

REID "A" NO. 1-E

Sec. 1, T-30N, R-13W, N.M.P.M.
900'/S; 1850'/East line
San Juan County, New Mexico



SUPRON ENERGY CORPORATION
Post Office Box 808
FARMINGTON, NEW MEXICO 87401

I hereby certify that I, or persons under my direct supervision, have inspected the proposed drillsite and access route; that I am familiar with the conditions which presently exist; that the statements made in this plan are, to the best of my knowledge, true and correct; and, that the work associated with the operations proposed herein will be performed by SUPRON ENERGY CORPORATION and its contractors subcontractors in conformity with this plan and the terms and conditions under which it is approved.

SUPRON ENERGY CORPORATION

A handwritten signature in cursive script, reading "Rudy D. Motto".

Rudy D. Motto
Area Superintendent
Phone: 325-3587

SUPRON ENERGY CORPORATION

REID "A" NO. 1-E

SE/4 Sec. 1, T-30N, R-13W, N.M.P.M.

San Juan County, New Mexico

1. The Geologic name of the surface formation is, "Wasatch".
2. The estimated tops of important Geologic markers are:

A. Top of the Ojo Alamo	350	ft.
B. Kirtland	430	ft.
C. Fruitland	1660	ft.
D. Pictured Cliffs	1957	ft.
E. Chacra	3030	ft.
F. Cliff House	3539	ft.
G. Point Lookout	4320	ft.
H. Gallup	4943	ft.
I. Greenhorn	6438	ft.
J. Dakota	6494	ft.
3. The estimated depths at which anticipated water, oil or other mineral bearing formations are expected to be encountered are:

A. Ojo Alamo	350	ft.	Water
B. Kirtland	430	ft.	Water
C. Fruitland	1660	ft.	Water
D. Pictured Cliffs	1957	ft.	Gas
E. Chacra	3030	ft.	Gas
F. Cliff House	3539	ft.	Water
G. Point Lookout	4320	ft.	Water
H. Gallup	4943	ft.	Dry
I. Greenhorn	6438	ft.	Shale
J. Dakota	6770	ft.	Gas
4. The casing program is shown on form 9-331C and all casing is new.
5. The lessee's pressure control equipment schematics are attached, along with minimum specifications, testing procedures, and frequencies.
6. The type, estimated volumes, and characteristics of the circulating medium are as follows:

A. 0 - 250 ft.	Natural Mud.
B. 250 - 6770 ft.	Permaloid non dispersed mud containing approx. 180 sx gel, 70 sx of permaloid and 20 sx of CMC.
7. The auxiliary equipment to be used will be floats at the bit and a sub on the floor with a full opening valve to be stabbed into the drill pipe when the kelly is not in the string.
8. The well is in an area which is partially developed; therefore we will not have a testing and coring program. The logging program is as follows:

A. E.S. Induction
B. Gamma Ray Density
C. Gamma Ray Correlation
D. Cement Bond Log
9. We do not expect to find any abnormal pressures, temperatures or hydrogen sulfide problems in this partially developed area.
10. The anticipated starting date for this well is April 1, 1981.