

UNITED STATES  
DEPARTMENT OF THE INTERIOR  
GEOLOGICAL SURVEY

## APPLICATION FOR PERMIT TO DRILL, DEEPEN, OR PLUG BACK

## 1a. TYPE OF WORK

DRILL ☒DEEPEN ☐PLUG BACK ☐

## b. TYPE OF WELL

OIL  
WELL ☐GAS  
WELL ☒

OTHER

SINGLE  
ZONE ☒MULTIPLE  
ZONE ☐

## 2. NAME OF OPERATOR

Blackwood &amp; Nichols Co., Ltd.

## 3. ADDRESS OF OPERATOR

P. O. Box 1237, Durango, CO 81302

## 4. LOCATION OF WELL (Report location clearly and in accordance with any State requirements.\*)

At surface

1730' F/SL, 740' F/WL

At proposed prod. zone

## 14. DISTANCE IN MILES AND DIRECTION FROM NEAREST TOWN OR POST OFFICE\*

Eleven miles

15. DISTANCE FROM PROPOSED\*  
LOCATION TO NEAREST  
PROPERTY OR LEASE LINE, FT.  
(Also to nearest drlg. unit line, if any)16. NO. OF ACRES IN LEASE  
2,56017. NO. OF ACRES ASSIGNED  
TO THIS WELL 176.6818. DISTANCE FROM PROPOSED LOCATION\*  
TO NEAREST WELL, DRILLING, COMPLETED,  
OR APPLIED FOR, ON THIS LEASE, FT.19. PROPOSED DEPTH  
2570 360020. ROTARY OR CABLE TOOLS  
Rotary

## 21. ELEVATIONS (Show whether DF, RT, GR, etc.)

6417' GL (Ungraded)

DRILLING OPERATIONS AUTHORIZED ARE  
SUBJECT TO COMPLIANCE WITH ATTACHED  
"GENERAL REQUIREMENTS".22. APPROX. DATE WORK WILL START\*  
September 20, 1987

23. PROPOSED CASING AND CEMENTING PROGRAM				This action is subject to technical and procedural review pursuant to 43 CFR 3165.4 and appeal pursuant to 43 CFR 3165.4.
SIZE OF HOLE	SIZE OF CASING	WEIGHT PER FOOT	SETTING DEPTH	
12 1/4"	9 5/8"	36.0	200'	
7 7/8"	4 1/2"	10.5	3,600'	
				Circulate (236 cf)
				Circulate or (1,000 cf)
				Cover Ojo Alamo

Blackwood & Nichols Co., Ltd. proposes to drill this Fruitland/Pictured Cliffs well to further develop the Northeast Blanco Unit. Project Summary:

1. Drill 12 1/4" hole to  $\pm 200$ . Run and cement 9 5/8" surface casing; circulate cement to surface; WOC - 12 hours.
2. Install BOP, pressure test casing to 1,000 psi.
3. Drill 7 7/8" hole to  $\pm 3,800'$  with a fresh water weight gel mud. Run electric and radioactive logs.
4. Run and cement 4 1/2" production casing; cover Ojo Alamo with cement. Run temperature survey if fail to circulate cement.
5. Run cement bond from T.D. to Fruitland formation.
6. Selectively perforate and break down the Pictured Cliffs and Fruitland zones; fracture stimulate with sand and water.
7. Run 2 3/8" production tubing.

## Attached: Onshore Drilling Program and Surface Use Program

IN ABOVE SPACE DESCRIBE PROPOSED PROGRAM: If proposal is to deepen or plug back, give data on present productive zone and proposed new productive zone. If proposal is to drill or deepen directionally, give pertinent data on subsurface locations and measured and true vertical depths. Give blowout preventer program, if any.

24. William F. Clark  
SIGNED William F. Clark TITLE Operations Manager DATE August 21, 1987

(This space for Federal or State office use)

PERMIT NO. \_\_\_\_\_

APPROVAL DATE \_\_\_\_\_

APPROVED BY \_\_\_\_\_

TITLE \_\_\_\_\_

CONDITIONS OF APPROVAL, IF ANY:

Hold C-104 for NSC

NMOCC

DIST. 3

/s/ Arlan B. Hiner

\*See Instructions On Reverse Side

FOR

NEW MEXICO OIL CONSERVATION COMMISSION  
WELL LOCATION AND ACREAGE DEDICATION PLAT

Form C-102  
Supersedes C-128  
Effective 1-1-65

All distances must be from the outer boundaries of the Section.

Operator <b>BLACKWOOD &amp; NICHOLS CO., LTD.</b>		Lease <b>NORTHEAST BLANCO UNIT</b>		Well No. <b>209</b>
Unit Letter <b>L</b>	Section <b>6</b>	Township <b>T. 31 N.</b>	Range <b>6W, N.M.P.M.</b>	County <b>San Juan</b>

Actual Footage Location of Well:

**1730** feet from the **south** line and **740** feet from the **west** line

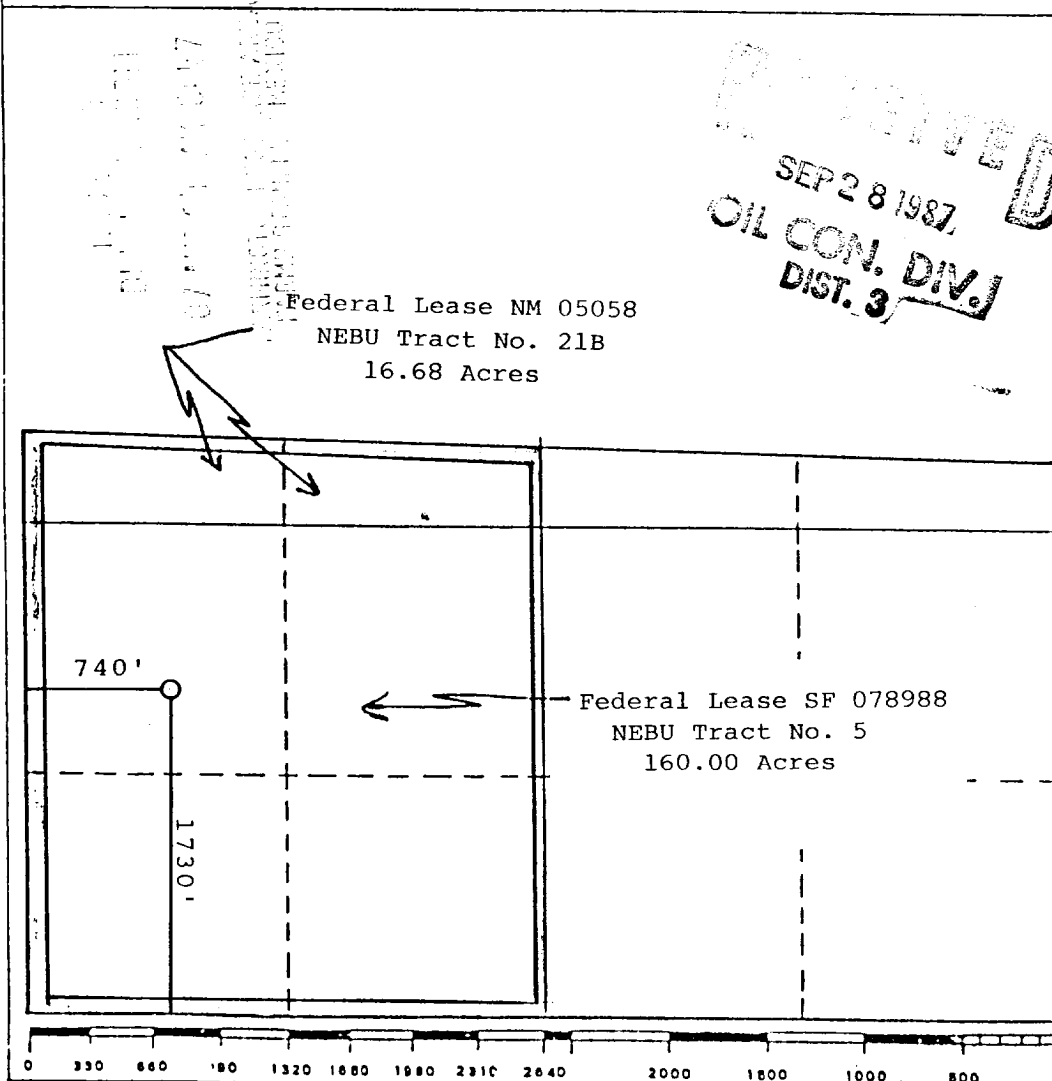
Ground Level Elev. <b>6417 (U.G.)</b>	Producing Formation <b>Fruitland Pictured Cliffs</b>	Pool <b>South Los Pinos (Ft - PC) <i>EXT</i></b>	Dedicated Acreage: <b>176.68</b> Acres
--	---	---	---

- Outline the acreage dedicated to the subject well by colored pencil or hachure marks on the plat below.
- If more than one lease is dedicated to the well, outline each and identify the ownership thereof (both as to working interest and royalty).
- If more than one lease of different ownership is dedicated to the well, have the interests of all owners been consolidated by communitization, unitization, force-pooling, etc?

☒ Yes ☐ No If answer is "yes," type of consolidation Unitization

If answer is "no," list the owners and tract descriptions which have actually been consolidated. (Use reverse side of this form if necessary.)

No allowable will be assigned to the well until all interests have been consolidated (by communitization, unitization, forced-pooling, or otherwise) or until a non-standard unit, eliminating such interests, has been approved by the Commission.



CERTIFICATION

I hereby certify that the information contained herein is true and complete to the best of my knowledge and belief.

*William F. Clark*

Name  
**William F. Clark**  
Position  
**Operations Manager**  
Company  
**Blackwood & Nichols Co., L**  
Date  
**August 1987**

I hereby certify that the well location shown on this plat was plotted from field notes of actual surveys made by me or under my supervision, and that the same is true and correct to the best of my knowledge and belief.

Date Surveyed  
**August 17, 1987**  
Registered Professional Engineer and/or Land Surveyor  
*Allison L. Kroeger*  
**Allison L. Kroeger, P.L.**  
Certificate No.  
**7922**

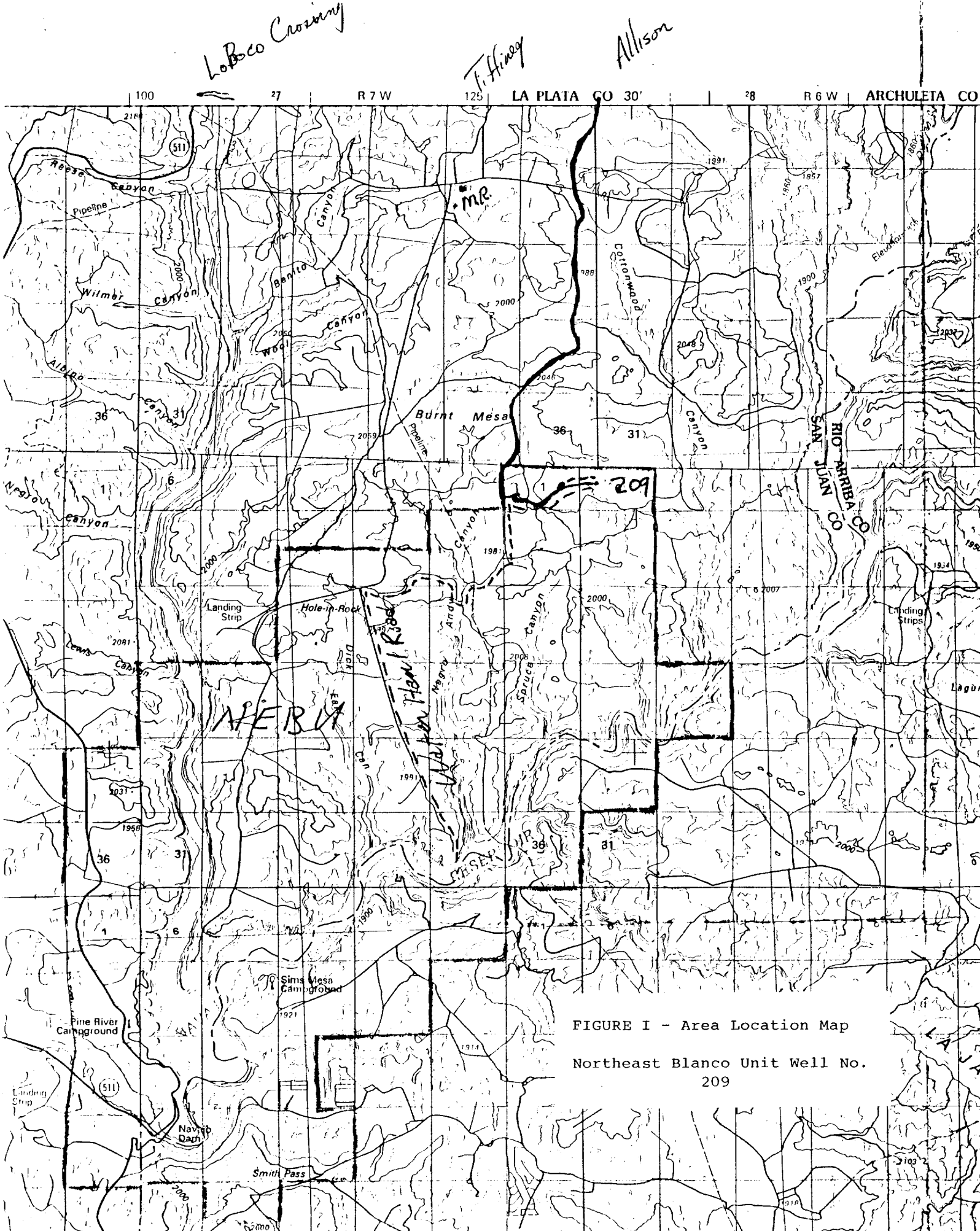


FIGURE I - Area Location Map  
Northeast Blanco Unit Well No.  
209