

UNITED STATES
DEPARTMENT OF THE INTERIOR
GEOLOGICAL SURVEY

APPLICATION FOR PERMIT TO DRILL, DEEPEN, OR PLUG BACK

1a. TYPE OF WORK

DRILL ☒DEEPEN ☐PLUG BACK ☐

b. TYPE OF WELL

OIL
WELL ☐GAS
WELL ☒

OTHER

SINGLE
ZONE ☒MULTIPLE
ZONE ☐

2. NAME OF OPERATOR

Southland Royalty Company

3. ADDRESS OF OPERATOR

P. O. Drawer 570, Farmington, NM 87401

4. LOCATION OF WELL (Report location clearly and in accordance with any State requirements.)*

At surface

1540' FNL & 1530' FEL

At proposed prod. zone

14. DISTANCE IN MILES AND DIRECTION FROM NEAREST TOWN OR POST OFFICE*

1 1/2 miles east of Aztec, NM

15. DISTANCE FROM PROPOSED*

LOCATION TO NEAREST
PROPERTY OR LEASE LINE, FT.
(Also to nearest drlg. unit line, if any)

1530'

16. NO. OF ACRES IN LEASE

1597.47

18. DISTANCE FROM PROPOSED LOCATION*
TO NEAREST WELL, DRILLING, COMPLETED,
OR APPLIED FOR, ON THIS LEASE, FT.

80'

19. PROPOSED DEPTH

7236'

17. NO. OF ACRES ASSIGNED
TO THIS WELL

320 E/322.89

20. ROTARY OR CABLE TOOLS

Rotary

21. ELEVATIONS (Show whether DF, RT, GR, etc.)

6018' GR

22. APPROX. DATE WORK WILL START*

March 6, 1981

23.

PROPOSED CASING AND CEMENTING PROGRAM

SIZE OF HOLE	SIZE OF CASING	WEIGHT PER FOOT	SETTING DEPTH	QUANTITY OF CEMENT
13 3/4"	10 3/4"	32.75#	200'	136 sx (160 cu.ft.)
9 7/8"	7 5/8"	26.40#	4770'	152 sx Stage One (211 cu.ft.)
				330 sx Stage Two (476 cu.ft.)
6 3/4"	5 1/2"	15.50#	4670' - 6700'	235 sx (350 cu.ft.)
	5 1/2"	17.0#	6700' - 7236'	

Surface formation is Nacimiento.

Top of Ojo Alamo sand is at 1274'.

Top of Pictured Cliffs sand is at 2546'.

Fresh water mud will be used to drill from surface to intermediate total depth.
An air system will be used to drill from intermediate total depth to total depth.
It is anticipated that a GR-Induction and GR-Density log will be run from total depth to intermediate total depth.

No abnormal pressures or poisonous gases are anticipated in this well.

It is anticipated that this well will be drilled before June 6, 1981. This depends on time required for approvals, rig availability and the weather.

Gas is dedicated.

IN ABOVE SPACE DESCRIBE PROPOSED PROGRAM: If proposal is to deepen or plug back, give data on present productive zone and proposed new productive zone. If proposal is to drill or deepen directionally, give pertinent data on subsurface locations and measured and true vertical depths. Give blowout preventer program, if any.

24.

SIGNED

R. E. Fielder

TITLE District Engineer

DATE 1-22-81

(This space for Federal or State office use)

PERMIT NO.

AS AMENDED

APPROVAL DATE

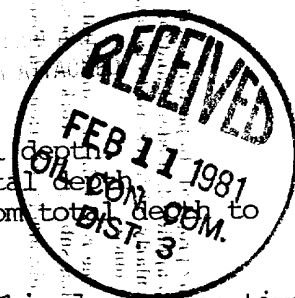
APPROVED BY

CONDITIONS OF APPROVAL, IF ANY

FEB 09 1981
James F. Sims
JAMES F. SIMS
DISTRICT ENGINEER

TITLE

DATE



OIL CONSERVATION DIVISION

P. O. BOX 2088

SANTA FE, NEW MEXICO 87501

Form C-107
Revised 10-1-78

STATE OF NEW MEXICO

ENERGY AND MINERALS DEPARTMENT

All distances must be from the outer boundaries of the Section.

Operator SOUTHLAND ROYALTY COMPANY			Lease NYE		Well No. 10E
Unit Letter G	Section 12	Township 30N	Range 11W	County San Juan	
Actual Footage Location of Well: 1540 feet from the North line and 1530 feet from the East line					
Ground Level Elev. 6018	Producing Formation Dakota		Pool Basin		Dedicated Acreage: 320 322.89 Acres

1. Outline the acreage dedicated to the subject well by colored pencil or hachure marks on the plat below.

2. If more than one lease is dedicated to the well, outline each and identify the ownership thereof (both as to working interest and royalty).

3. If more than one lease of different ownership is dedicated to the well, have the interests of all owners been consolidated by communitization, unitization, force-pooling, etc?

☐ Yes ☐ No If answer is "yes," type of consolidation _____

If answer is "no," list the owners and tract descriptions which have actually been consolidated. (Use reverse side of this form if necessary.) _____

No allowable will be assigned to the well until all interests have been consolidated (by communitization, unitization, forced-pooling, or otherwise) or until a non-standard unit, eliminating such interests, has been approved by the Commission.

	Sec.
	12
SF-078198	

Scale: 1"=1000'

CERTIFICATION

I hereby certify that the information contained herein is true and complete to the best of my knowledge and belief.

R. E. Fielder

Name
Robert E. Fielder

Position
District Engineer

Company
Southland Royalty Company

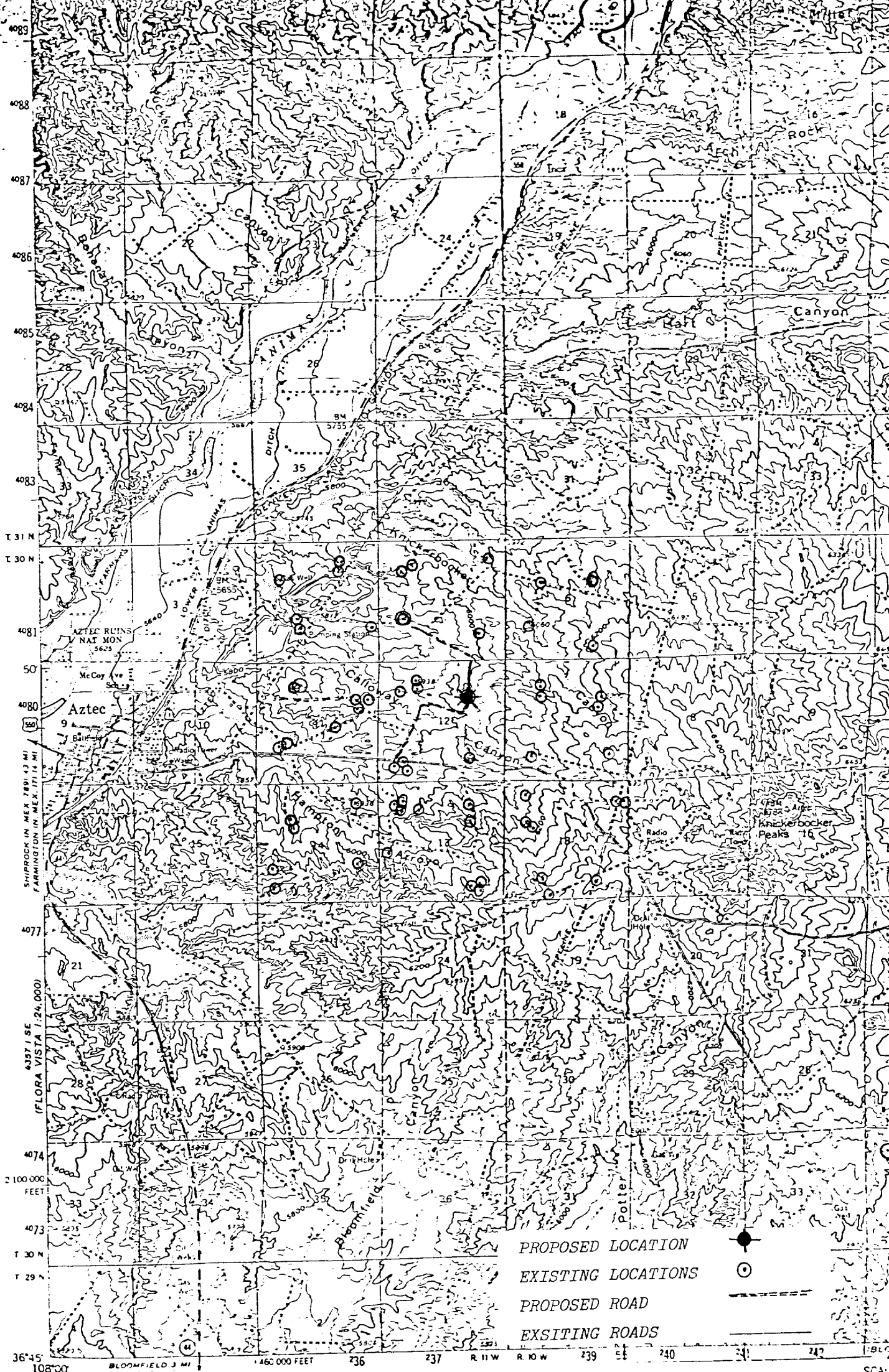
Date
January 22, 1981

I hereby certify that the well location shown on this plat was plotted from field notes of actual surveys made by me or under my supervision, and that the same is true and correct to the best of my knowledge and belief.

Date Surveyed
December 30, 1980

Registered Professional Engineer and Land Surveyor
Fred B. Kerr, Jr.

Certification No.
3950



Mapped, edited, and
Control by USGS and US
Topography by photogram
photographs taken 1955
Polyconic projection, 19
10 000 foot grid based o
west zone
1000 meter Universal Transverse Mercator grid ticks.
June 13 shown in blue
Red dots in shaded areas in which only landmark buildings are shown
Land shown omitted in parts of T 32 N, R 9 and 10 W
because of insufficient data

Vicinity Map for
SOUTHLAND ROYALTY COMPANY #10E NYE
1540'FNL 1530'FEL Sec. 12-T30N-R11W
SAN JUAN COUNTY, NEW MEXICO

UTM GRID AND 1957 MAGNETIC NORTH
DECLINATION AT CENTER OF SHEET

FOR SALE BY U.S. GEOLOGICAL SURVEY, DENVER
A FOLDER DESCRIBING TOPOGRAPHIC MAPS