

NO. OF COPIES RECEIVED	
DISTRIBUTION	
SANTA FE	
FILE	
U.S.G.S.	
LAND OFFICE	
OPERATOR	

P. O. BOX 2088

SANTA FE, NEW MEXICO 87501

5A. Indicate Type of Lease

STATE ☐ FEE ☒

5. State Oil & Gas Lease No.

APPLICATION FOR PERMIT TO DRILL, DEEPEN, OR PLUG BACK

1a. Type of Work

DRILL ☒

DEEPEN ☐

PLUG BACK ☐

b. Type of Well

OIL WELL ☐

GAS WELL ☒

OTHER

SINGLE ZONE ☒

MULTIPLE ZONE ☐

2. Name of Operator

AMOCO PRODUCTION COMPANY

3. Address of Operator

501 Airport Dr., Farmington, NM

4. Location of Well

UNIT LETTER E LOCATED 1600 FEET FROM THE North LINE

AND 1230

FEET FROM THE West LINE OF SEC. 28 TWP. 30 N RGE. 12W NMPM

7. Unit Agreement Name

8. Farm or Lease Name

McCoy Gas Com D

9. Well No.

IE

10. Field and Pool, or Wildcat

Basin Dakota

12. County

San Juan

21. Elevations (State whether DE, RT, etc.)

5524' GL

21A. Kind & Status Plug. Bond

Statewide

19. Proposed Depth

6500

19A. Formation

Dakota

20. Rotary or C.T.

Rotary

21B. Drilling Contractor

Unknown

22. Date Work will start

As soon as permitted

23.

PROPOSED CASING AND CEMENT PROGRAM

SIZE OF HOLE	SIZE OF CASING	WEIGHT PER FOOT	SETTING DEPTH	SACKS OF CEMENT	EST. TOP
12 1/4	8 5/8	24#	300	100	Surface
6 1/2	4 1/2	10.5#	6500	150	Surface

Amoco proposes to drill the above well to further develop the Basin Dakota reservoir. The well will be drilled to the surface casing point using native mud. The well will then be drilled to TD with a low solids nondispersed mud system. Completion design will be based on open hole logs. Copy of all logs will be filed upon completion. Amoco's standard blowout prevention will be employed; see attached drawing for blowout preventer design.

Upon completion the well location will be cleaned and the reserve pit filled and leveled.

Gas produced from this well is ~~not~~ dedicated to a gas sales contract.

An application for approval of this unorthodox location has been filed with the Santa Fe Office of the NMOC.

APPROVAL VALID
FOR 90 DAYS UNLESS
DRILLING COMMENCED.

EXPIRES 8-11-81

IN ABOVE SPACE DESCRIBE PROPOSED PROGRAM: IF PROPOSAL IS TO DEEPEN OR PLUG BACK, GIVE DATA ON PRESENT PRODUCTIVE ZONE AND PROPOSED NEW PRODUCTIVE ZONE. GIVE BLOWOUT PREVENTER PROGRAM, IF ANY.

I hereby certify that the information above is true and complete to the best of my knowledge and belief.

Signed _____ Title District Engineer

Date FEB 10 1981

(This space for State Use)

SUPERVISOR DISTRICT #3

APPROVED BY Frank J. Chazy TITLE _____

DATE FEB 11 1981

CONDITIONS OF APPROVAL, IF ANY:

Hold
C-101
for NIS

All distances must be from the outer boundaries of the Section.

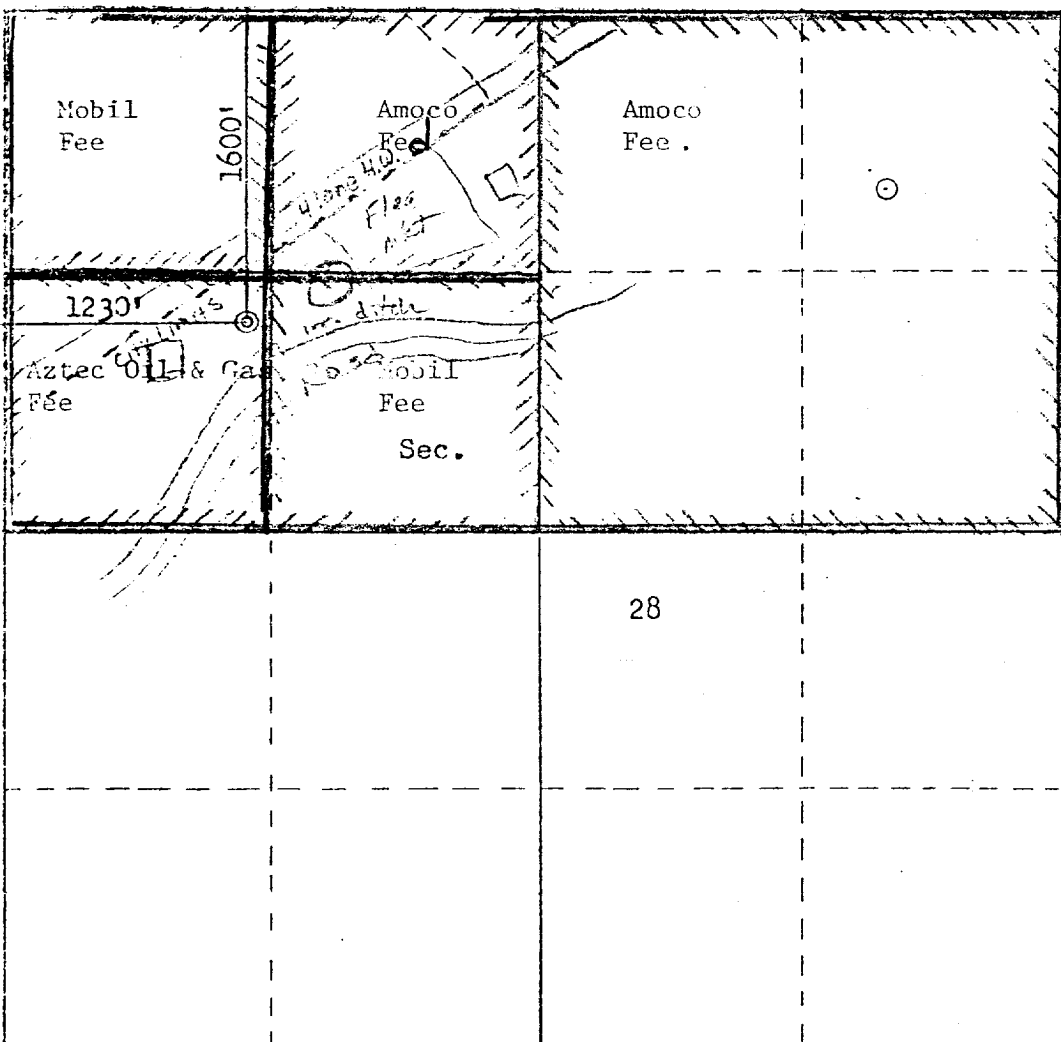
Operator AMOCO PRODUCTION COMPANY			Lease McCOY GAS COM "D"		Well No. 1E
Unit Letter E	Section 28	Township 30N	Range 12W	County San Juan	
Actual Footage Location of Well: 1600 feet from the North line and 1230 feet from the West line					
Ground Level Elev: 5524	Producing Formation Dakota	Pool Basin Dakota		Dedicated Acreage: 320 Acres	

1. Outline the acreage dedicated to the subject well by colored pencil or hatchure marks on the plat below.
2. If more than one lease is dedicated to the well, outline each and identify the ownership thereof (both as to working interest and royalty).
3. If more than one lease of different ownership is dedicated to the well, have the interests of all owners been consolidated by communitization, unitization, force-pooling, etc?

☒ Yes ☐ No If answer is "yes," type of consolidation Communitization

If answer is "no," list the owners and tract descriptions which have actually been consolidated. (Use reverse side of this form if necessary.)

No allowable will be assigned to the well until all interests have been consolidated (by communitization, unitization, forced-pooling, or otherwise) or until a non-standard unit, eliminating such interests, has been approved by the Commission.

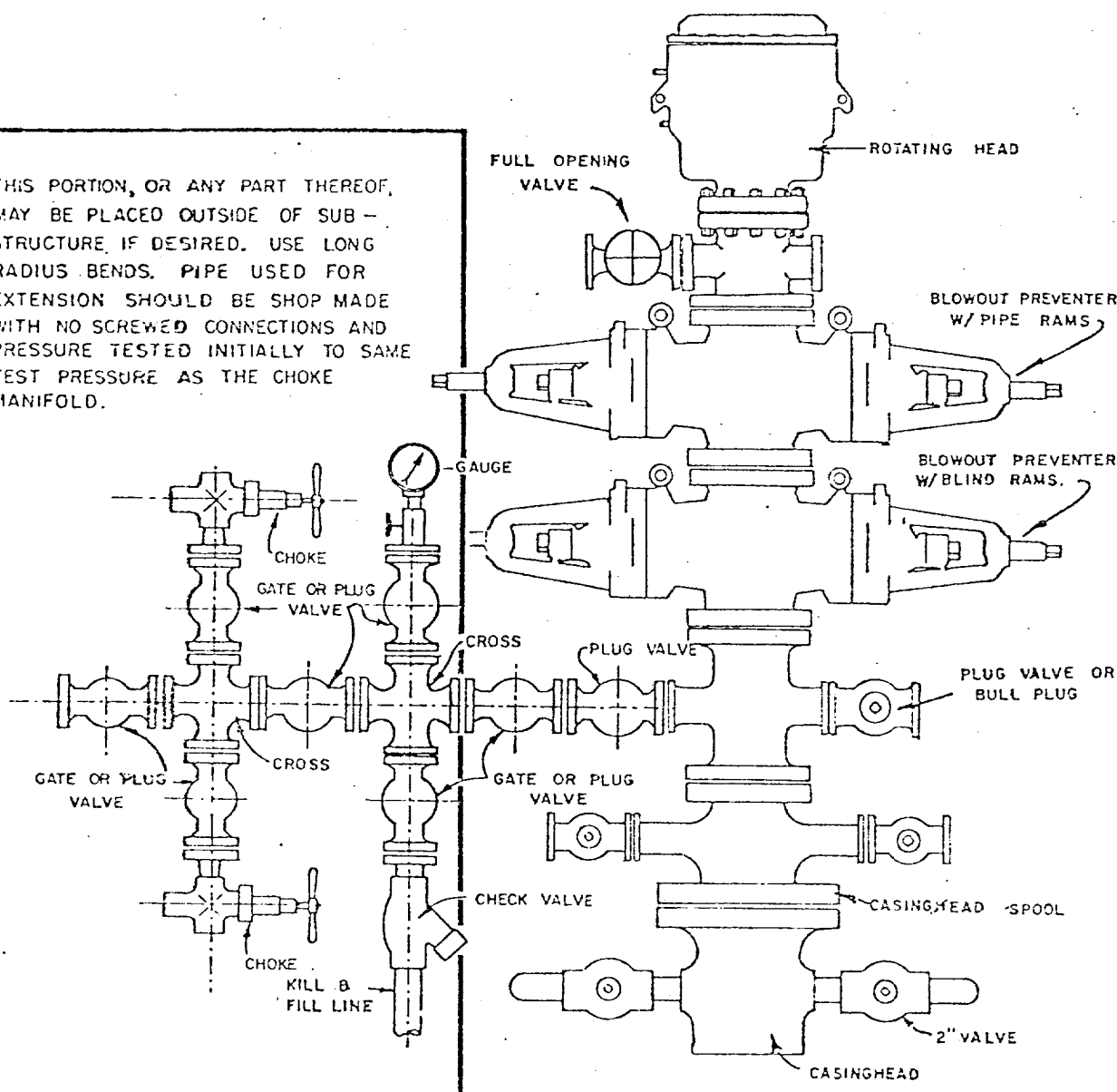


Scale: 1"=1000'

<p align="center">CERTIFICATION</p> <p align="center">FEB 11 1981</p> <p align="center">OIL CON. DIV.</p> <p align="center">DIST. 3</p> <p align="center">I hereby certify that the information contained herein is true and complete to the best of my knowledge and belief.</p>	
Name	W. L. PETERSON
Position	DISTRICT ENGINEER
Company	AMOCO PRODUCTION COMPANY
Date	2-4-81
<p>I hereby certify that the well location shown on this plat was plotted from field notes of actual surveys made by me or under my supervision, and that the same is true and correct to the best of my knowledge and belief.</p>	
Date Surveyed	November 14, 1980
Registered Professional Engineer and Land Surveyor	Fred B. Kerr Jr.
Certificate No.	3950

1. Blowout Preventers and Master Valve to be fluid operated, and all fittings must be in good condition.
2. Equipment through which bit must pass shall be as large as the inside diameter of the casing that is being drilled through.
3. Nipple above Blowout Preventer shall be same size or larger than BOP being drilled through.
4. All fittings to be flanged.
5. Omsco or comparable safety valve must be available on rig floor at all times with proper connection or sub. The I.D. of safety valve should be as great as I.D. of tool joints of drill pipe, or at least as great as I.D. of drill collars.

THIS PORTION, OR ANY PART THEREOF, MAY BE PLACED OUTSIDE OF SUB-STRUCTURE IF DESIRED. USE LONG RADIUS BENDS. PIPE USED FOR EXTENSION SHOULD BE SHOP MADE WITH NO SCREWED CONNECTIONS AND PRESSURE TESTED INITIALLY TO SAME TEST PRESSURE AS THE CHOKE MANIFOLD.



BLOWOUT PREVENTER HOOKUP

API Series # 900

EXHIBIT D-4

OCTOBER 16, 1969

Operation of BOP by closing both pipe and blind rams will be tested each trip or, on long bit runs, pipe rams will be closed once each 24 hours.