

UNITED STATES
DEPARTMENT OF THE INTERIOR
GEOLOGICAL SURVEY

APPLICATION FOR PERMIT TO DRILL, DEEPEN, OR PLUG BACK

1a. TYPE OF WORK

DRILL ☒DEEPEN ☐PLUG BACK ☐

b. TYPE OF WELL

OIL
WELL ☐GAS
WELL ☒

OTHER

SINGLE
ZONE ☒MULTIPLE
ZONE ☐

2. NAME OF OPERATOR

Southland Royalty Company

3. ADDRESS OF OPERATOR

P. O. Drawer 570, Farmington, NM 87401

4. LOCATION OF WELL (Report location clearly and in accordance with State requirements.)*

At surface

1660' FNL & 1590' FWL

At proposed prod. zone

14. DISTANCE IN MILES AND DIRECTION FROM NEAREST TOWN OR POST OFFICE*

Approximately 5 miles northeast of Bloomfield, NM

15. DISTANCE FROM PROPOSED*

LOCATION TO NEAREST

PROPERTY OR LEASE LINE, FT.

(Also to nearest drlg. unit line, if any)

1590'

18. DISTANCE FROM PROPOSED LOCATION*

TO NEAREST WELL, DRILLING, COMPLETED,
OR APPLIED FOR, ON THIS LEASE, FT.

490'

16. NO. OF ACRES IN LEASE

800.00

19. PROPOSED DEPTH

7310'

17. NO. OF ACRES ASSIGNED
TO THIS WELL

320 W/318.80

20. ROTARY OR CABLE TOOLS

Rotary

21. ELEVATIONS (Show whether DF, RT, GR, etc.)

6132' GL

22. APPROX. DATE WORK WILL START*

April 5, 1981

23.

PROPOSED CASING AND CEMENTING PROGRAM

SIZE OF HOLE	SIZE OF CASING	WEIGHT PER FOOT	SETTING DEPTH	QUANTITY OF CEMENT
13 3/4"	10 3/4"	32.75#	200'	160 cu. ft.
9 7/8"	7 5/8"	26.4	2970'	470 cu. ft.
6 3/4"	5 1/2"	15.5#	2820'-6800'	633 cu. ft.
	5 1/2"	17.0#	6800'-7310'	

DRILLING DEPTH TO BE INDICATED
SURFACE TO TOP OF OIL OR GAS WITH ATTACHED

Surface formation is Nacimiento.

Top of Ojo Alamo sand is at 1529'.

Top of Pictured Cliffs sand is at 2670'.

Fresh water mud will be used to drill from surface to intermediate TD.

An air system will be used to drill from intermediate TD to TD.

It is anticipated that an IES log will be run from intermediate casing TD and
a GR-Density from TD to 6000'.

No abnormal pressures or poisonous gases are anticipated in this well.

It is expected that this well will be drilled before August 5, 1981. This depends on
time required for approvals, rig availability and the weather.

Gas is dedicated.

IN ABOVE SPACE DESCRIBE PROPOSED PROGRAM: If proposal is to deepen or plug back, give data on present productive zone and proposed new productive zone. If proposal is to drill or deepen directionally, give pertinent data on subsurface locations and measured and true vertical depths. Give blowout preventer program, if any.

24.

SIGNED

TITLE District Engineer

DATE 1-23-81

(This space for Federal or State office use)

PERMIT NO.

APPROVAL DATE

APPROVED BY

TITLE

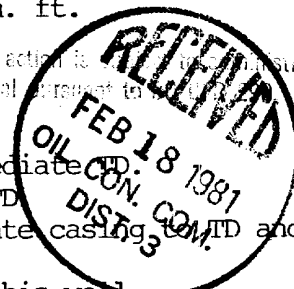
DATE

CONDITIONS OF APPROVAL, IF ANY

APPROVED
AS AMENDEDFEB 13 1981
JAMES F. SIMS
DISTRICT ENGINEER

ok3~

NMDC



OIL CONSERVATION DIVISION

STATE OF NEW MEXICO
ENERGY AND MINERALS DEPARTMENTP. O. BOX 2088
SANTA FE, NEW MEXICO 87501Form C-107
Revised 10-1-77

All distances must be from the outer boundaries of the Section.

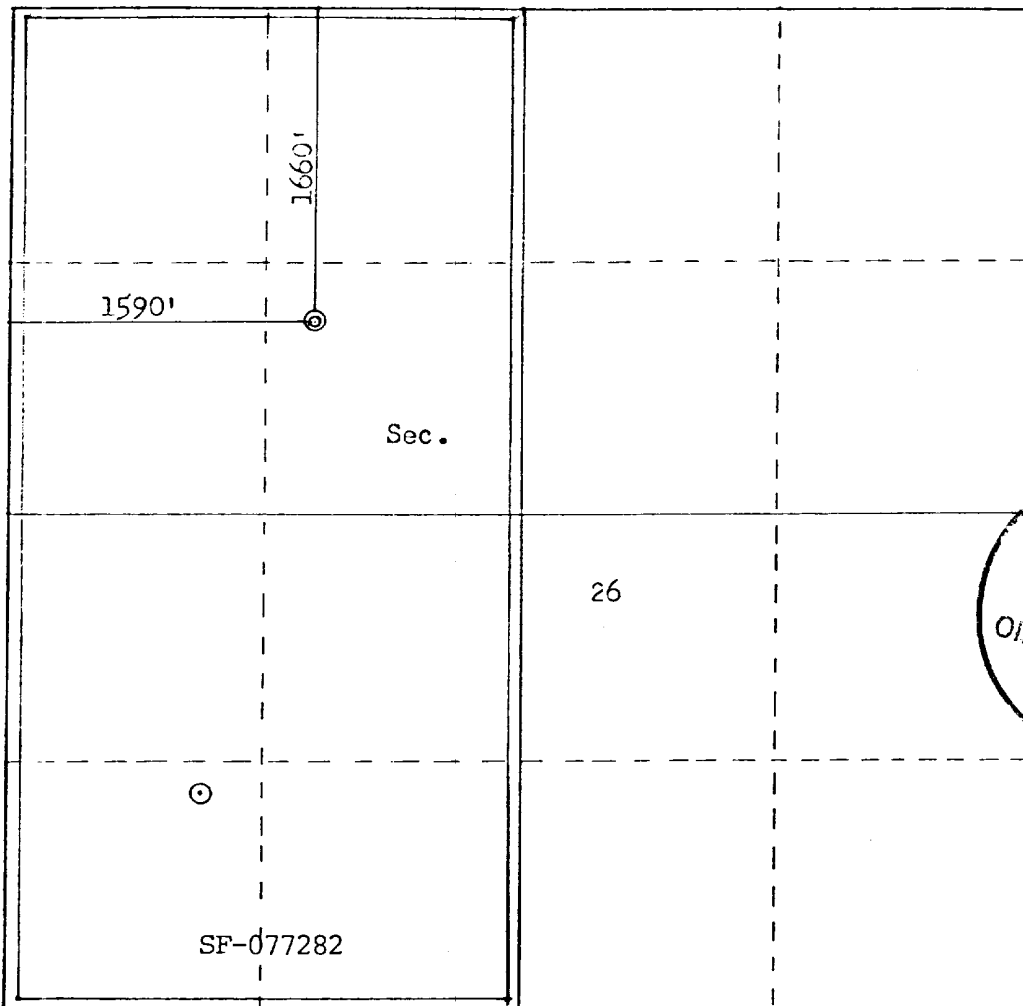
Operator SOUTHLAND ROYALTY COMPANY			Lease GRENIER "A"		Well No. 4E
Unit Letter F	Section 26	Township 30N	Range 10W	County San Juan	
Actual Footage Location of Well: 1660 feet from the North line and 1590 feet from the West line					
Ground Level Elev. 6132	Producing Formation Dakota	Pool Basin		Dedicated Acreage: 320 Acres	

1. Outline the acreage dedicated to the subject well by colored pencil or hatchure marks on the plat below.
2. If more than one lease is dedicated to the well, outline each and identify the ownership thereof (both as to working interest and royalty).
3. If more than one lease of different ownership is dedicated to the well, have the interests of all owners been consolidated by communitization, unitization, force-pooling, etc?

☐ Yes ☐ No If answer is "yes," type of consolidation _____

If answer is "no," list the owners and tract descriptions which have actually been consolidated. (Use reverse side of this form if necessary.) _____

No allowable will be assigned to the well until all interests have been consolidated (by communitization, unitization, forced-pooling, or otherwise) or until a non-standard unit, eliminating such interests, has been approved by the Commission.



Scale: 1"=1000'

CERTIFICATION

I hereby certify that the information contained herein is true and complete to the best of my knowledge and belief.

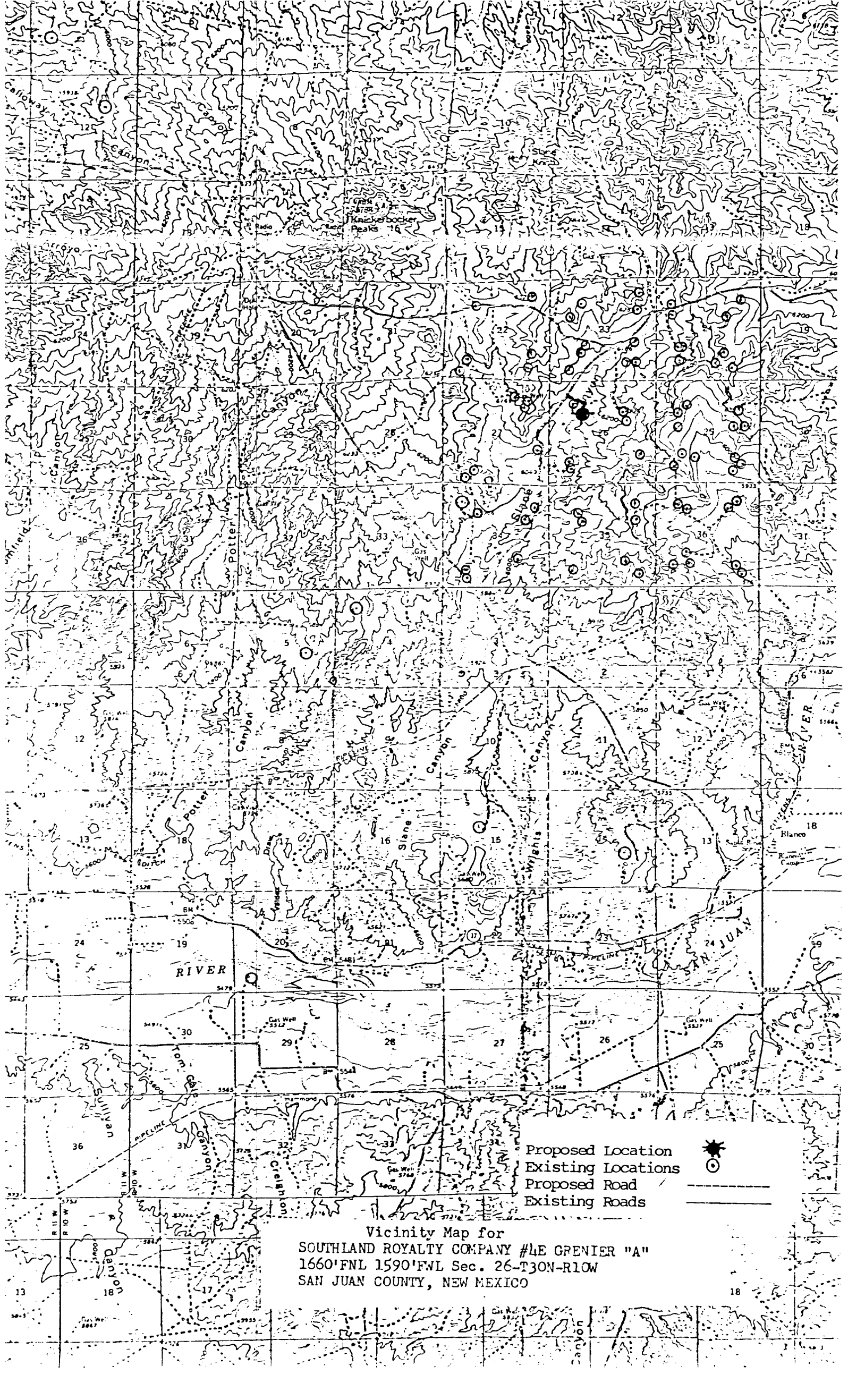
Robert E. Fielder

Name
Robert E. Fielder
Position
District Engineer
Company
Southland Royalty Company
Date
January 22, 1981

RECEIVED
FEB 18 1981
OIL CON. COM.
DIST. 3

I hereby certify that the well location shown on this plat was plotted from field notes of actual surveys made by me or under my supervision, and that the same is true and correct to the best of my knowledge and belief.

Date Surveyed
December 29, 1980
Registered Professional Engineer
and Land Surveyor
Fred B. Kerr, Jr.
Certificate No. **3950**
STATE OF NEW MEXICO
FRED B. KERR, JR.



Proposed Location
Existing Locations
Proposed Road
Existing Roads

Vicinity Map for
SOUTHLAND ROYALTY COMPANY #4E GRENIER "A"
1660'FNL 1590'FWL Sec. 26-T30N-R10W
SAN JUAN COUNTY, NEW MEXICO