

UNITED STATES
DEPARTMENT OF THE INTERIOR
GEOLOGICAL SURVEY

APPLICATION FOR PERMIT TO DRILL, DEEPEN, OR PLUG BACK

1a. TYPE OF WORK

DRILL ☒DEEPEN ☐PLUG BACK ☐

b. TYPE OF WELL

OIL
WELL ☐GAS
WELL ☒

OTHER

SINGLE
ZONE ☒MULTIPLE
ZONE ☐

2. NAME OF OPERATOR

Tenneco Oil Company

3. ADDRESS OF OPERATOR

P.O. Box 3249, Englewood, Colorado 80155

4. LOCATION OF WELL (Report location clearly and in accordance with any State requirements.)

At surface

1750 FSL, 800 FEL

At proposed prod. zone
same as above

14. DISTANCE IN MILES AND DIRECTION FROM NEAREST TOWN OR POST OFFICE*

Approximately 2 miles East of Aztec, N.M.

15. DISTANCE FROM PROPOSED*

LOCATION TO NEAREST
PROPERTY OR LEASE LINE, FT.
(Also to nearest drlg. unit line, if any)

800'

16. NO. OF ACRES

478.63

17. NO. OF ACRES ASSIGNED

TO THIS WELL

5/ 320

18. DISTANCE FROM PROPOSED LOCATION*
TO NEAREST WELL, DRILLING, COMPLETED,
OR APPLIED FOR, ON THIS LEASE, FT.

19. PROPOSED DEPTH

±7050'

20. ROTARY OR CABLE TOOLS

Rotary

21. ELEVATIONS (Show whether DF, RT, GR, etc.)

5876' GR

22. APPROX. DATE WORK WILL START*

April 1981

23.

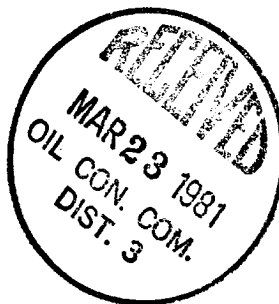
PROPOSED CASING AND CEMENTING PROGRAM

SIZE OF HOLE	SIZE OF CASING	WEIGHT PER FOOT	SETTING DEPTH	QUANTITY OF CEMENT
12 1/4"	9 5/8" new	36#	±250'	Circulate to surface
8 3/4"	7" new	23#	±3000'	Circulate to surface
6 1/4"	4 1/2" new	10.5#, 11.6#	±7050'	Circulate to liner top

COPIES ARE
ATTACHED.

See attached.

The gas is dedicated.



cc Nate Broadhead, Aztec City Clerk

IN ABOVE SPACE DESCRIBE PROPOSED PROGRAM: If proposal is to deepen or plug back, give data on present productive zone and proposed new productive zone. If proposal is to drill or deepen directionally, give pertinent data on subsurface locations and measured and true vertical depths. Give blowout preventer program, if any.

24. SIGNED R. A. Mishler Mishler TITLE Sr. Production Analyst DATE January 27, 1981

(This space for Federal or State office use)

PERMIT NO. _____

APPROVAL DATE _____

APPROVED BY _____

TITLE _____

CONDITIONS OF APPROVAL, IF ANY:

APPROVED
AS AMENDEDMAR 19 1981
JAMES F. SIMS
DISTRICT ENGINEER

*See Instructions On Reverse Side

All distances must be from the outer boundaries of the Section.

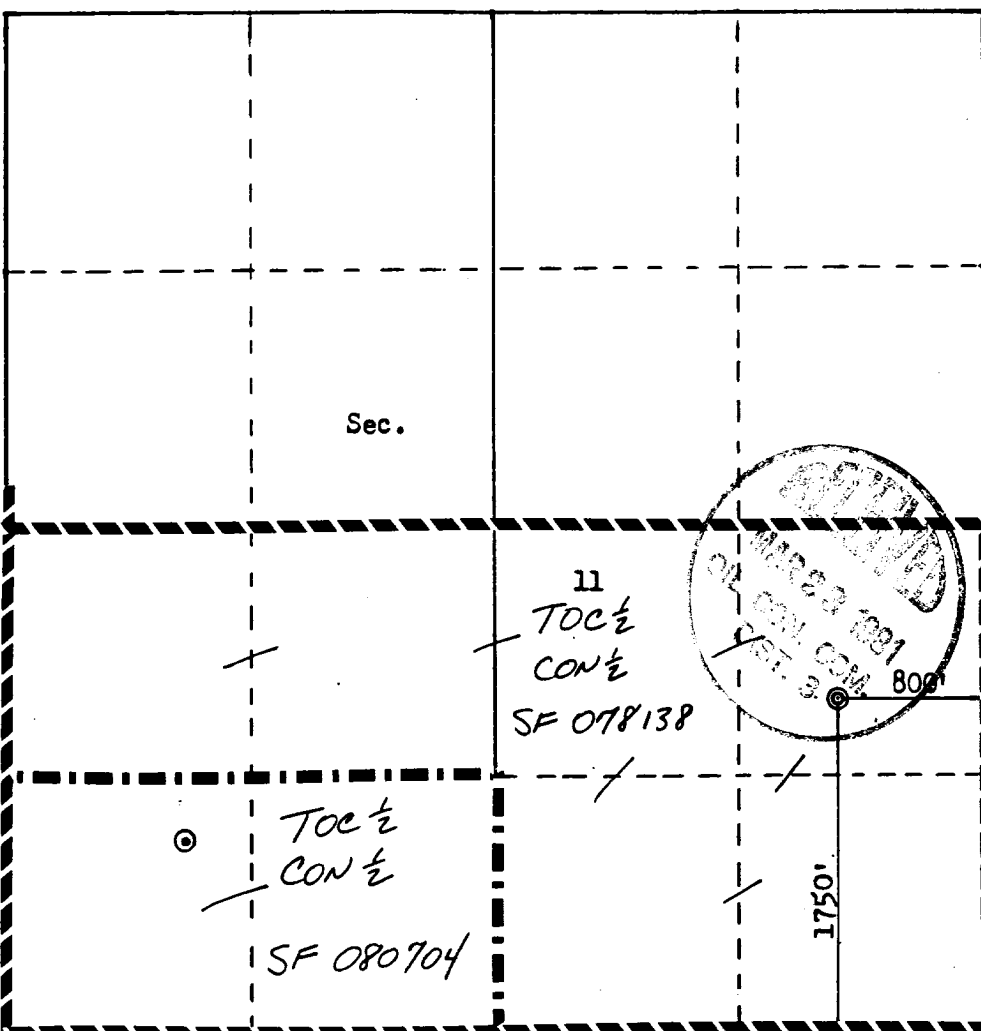
Operator TENNECO OIL COMPANY		Lease STOREY "B"		Well No. 1E
Unit Letter I	Section 11	Township 30N	Range 11W	County San Juan
Actual Footage Location of Well: 1750 feet from the South line and 800 feet from the East line				
Ground Level Elev: 5876	Producing Formation Dakota	Pool Basin Dakota	Dedicated Acreage: 320 Acres	

1. Outline the acreage dedicated to the subject well by colored pencil or hatchure marks on the plat below.
2. If more than one lease is dedicated to the well, outline each and identify the ownership thereof (both as to working interest and royalty).
3. If more than one lease of different ownership is dedicated to the well, have the interests of all owners been consolidated by communitization, unitization, force-pooling, etc?

☐ Yes ☐ No If answer is "yes," type of consolidation _____

If answer is "no," list the owners and tract descriptions which have actually been consolidated. (Use reverse side of this form if necessary.) _____

No allowable will be assigned to the well until all interests have been consolidated (by communitization, unitization, forced-pooling, or otherwise) or until a non-standard unit, eliminating such interests, has been approved by the Commission.



Scale: 1"=1000'

CERTIFICATION

I hereby certify that the information contained herein is true and complete to the best of my knowledge and belief.

R. A. Mishler

Name

R. A. Mishler

Position

Sr. Production Analyst

Company

Tenneco Oil Company

Date

January 27, 1981

I hereby certify that the well location shown on this plat was plotted from field notes of actual surveys made by me or under my supervision, and that the same is true and correct to the best of my knowledge and belief.

Date Surveyed

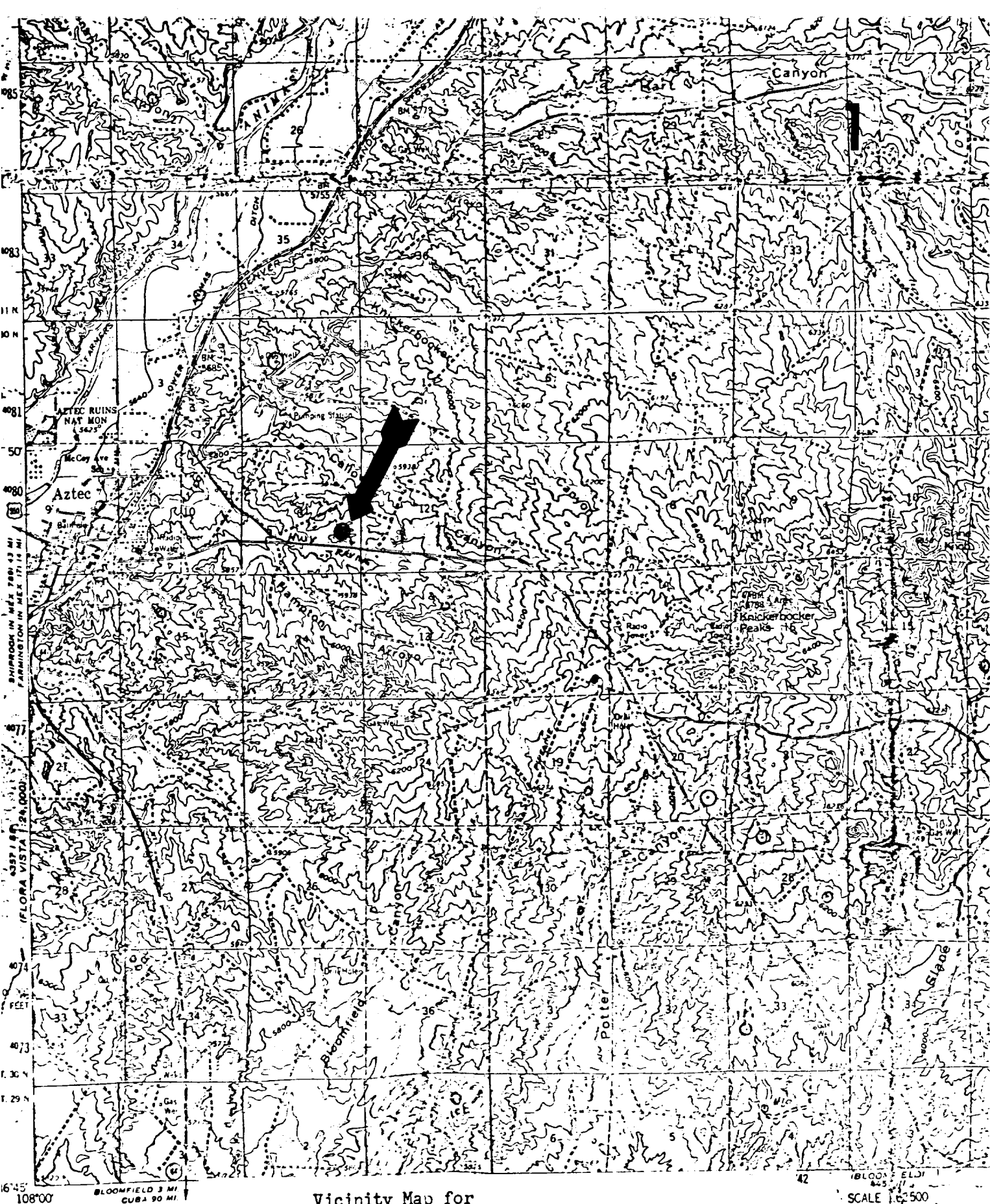
December 14, 1978

Registered Professional Engineer and Land Surveyor

Fred B. Kerr, Jr.

Certificate No.

3950 B. KERR, JR.



Vicinity Map for
TENNECO OIL COMPANY #1E STOREY "B"
 1750'FSL 800'FEL Sec. 11-T3ON-R11W
 SAN JUAN COUNTY, NEW MEXICO

Mapped, edited, and published
 Control by USGS and USC&GS
 Topography by photogrammetric m
 photographs taken 1955 Field ch

Polyconic projection 1927 North American datum
 10,000 foot grid based on New Mexico coordinate system,
 west zone
 1000 meter Universal Transverse Mercator grid ticks,
 zone 13 shown in blue
 Red ink features and labels are shown in black ink on this map

