

UNITED STATES
DEPARTMENT OF THE INTERIOR
GEOLOGICAL SURVEY

30-045-24987

APPLICATION FOR PERMIT TO DRILL, DEEPEN, OR PLUG BACK

1a. TYPE OF WORK DRILL ☒ DEEPEN ☐ PLUG BACK ☐

b. TYPE OF WELL OIL WELL ☐ GAS WELL ☒ OTHER ☐ SINGLE ZONE ☒ MULTIPLE ZONE ☐

2. NAME OF OPERATOR

Supron Energy Corporation

3. ADDRESS OF OPERATOR

P. O. Box 808, Farmington, New Mexico 87401

4. LOCATION OF WELL (Report location clearly and in accordance with any State requirements.)*
At surface

1120 ft./South line & 1685 Ft./East line.
At proposed prod. zone Same as above.

14. DISTANCE IN MILES AND DIRECTION FROM NEAREST TOWN OR POST OFFICE*

1/2 Mile North of Farmington, New Mexico

15. DISTANCE FROM PROPOSED* LOCATION TO NEAREST PROPERTY OR LEASE LINE, FT. (Also to nearest drlg. unit line, if any) 1120 Feet

18. DISTANCE FROM PROPOSED LOCATION* TO NEAREST WELL, DRILLING, COMPLETED, OR APPLIED FOR, ON THIS LEASE, FT. 3370 Feet

21. ELEVATIONS (Show whether DF, RT, GR, etc.) 5569 GR

23. PROPOSED CASING AND CEMENTING PROGRAM

SIZE OF HOLE	SIZE OF CASING	WEIGHT PER FOOT	SETTING DEPTH	QUANTITY OF CEMENT
12-1/4"	8-5/8"	24.00	300 Ft.	180 Sx. circulated
7-7/8"	4-1/2"	10.50	6340 Ft.	805 Sx.

We plan to drill 12-1/4" surface hole to approximately 300 ft. Run 8-5/8" Csg. and cement. The cement will be circulated back to surface. Pressure test the pipe. Drill 7-7/8" hole to T.D. of approximately 6340 ft. and cement as follows: 1st stage 280 sx of 50-50 Poz., 2nd stage 250 sx of 50-50 poz and 50 sx. of class "B", 3rd stage 150 sx. of 65-35-6 and 75 sx. of class "B". Pressure test the pipe. Perforate the casing in the Dakota zone then Frac the well to stimulate production. Clean the well up and nipple down well head. Test well and connect to a gathering system.

The gas from this well has been previously designated to a transporter

IN ABOVE SPACE DESCRIBE PROPOSED PROGRAM: If proposal is to deepen or plug back, give data on present productive zone and proposed new productive zone. If proposal is to drill or deepen directionally, give pertinent data on subsurface locations and measured and true vertical depths. Give blowout preventer program, if any.

24. SIGNED Rudy D. Motto TITLE Area Superintendent DATE February 27, 1981
(This space for Federal or State office use)

PERMIT NO. APPROVAL DATE

APPROVED BY TITLE

CONDITIONS OF APPROVAL, IF ANY:

5. LEASE DESIGNATION AND SERIAL NO.

SF 078213

6. IF INDIAN, ALLOTTEE OR TRIBE NAME

7. UNIT AGREEMENT NAME

8. FARM OR LEASE NAME

City of Farmington

9. WELL NO.

1-E

10. FIELD AND POOL, OR WILDCAT

Basin Dakota

11. SEC., T., R., M., OR BLK. AND SURVEY OR AREA

Sec. 35, T-30N, R-13W

N.M.P.M.

12. COUNTY OR PARISH 13. STATE

San Juan New Mexico

17. NO. OF ACRES ASSIGNED TO THIS WELL

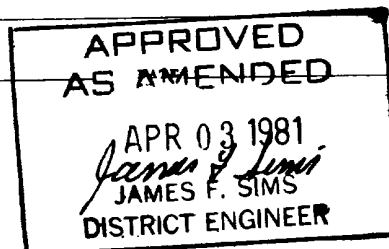
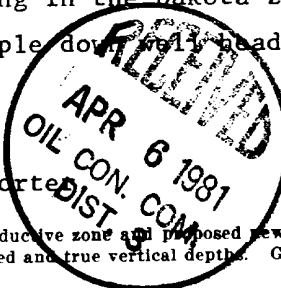
E/2 E/320.00

20. ROTARY OR CABLE TOOLS

Rotary

22. APPROX. DATE WORK WILL START*

May 20, 1981



All distances must be from the outer boundaries of the Section.

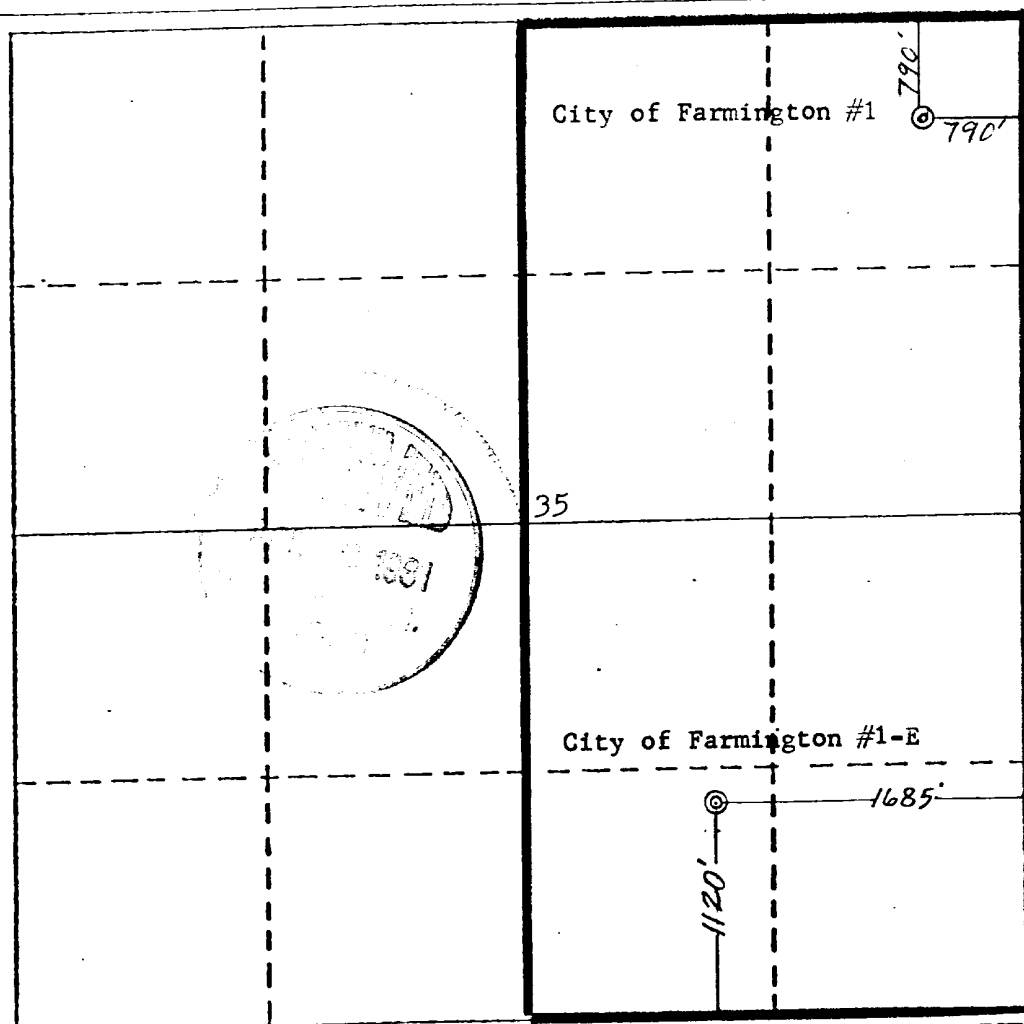
Operator SUPRON ENERGY CORPORATION			Lease CITY OF FARMINGTON		Well No. 1-E
Unit Letter D	Section 35	Township 30 NORTH	Range 13 WEST	County SAN JUAN	
Actual Footage Location of Well: 1 120 feet from the SOUTH line and 1685 feet from the EAST line					
Ground Level Elev. 5569	Producing Formation DAKOTA	Pool BASIN		Dedicated Acreage E/2 320.00 Acres	

1. Outline the acreage dedicated to the subject well by colored pencil or hatchure marks on the plat below.
2. If more than one lease is dedicated to the well, outline each and identify the ownership thereof (both as to working interest and royalty).
3. If more than one lease of different ownership is dedicated to the well, have the interests of all owners been consolidated by communitization, unitization, force-pooling, etc?

☐ Yes ☐ No If answer is "yes," type of consolidation _____

If answer is "no," list the owners and tract descriptions which have actually been consolidated. (Use reverse side of this form if necessary.) _____

No allowable will be assigned to the well until all interests have been consolidated (by communitization, unitization, forced-pooling, or otherwise) or until a non-standard unit, eliminating such interests, has been approved by the Division.



CERTIFICATION

I hereby certify that the information contained herein is true and complete to the best of my knowledge and belief.

Rudy D. Motto
Name

Rudy D. Motto

Position

Area Superintendent

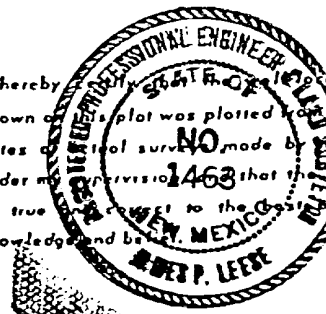
Company

Supron Energy Corporation

Date

June 23, 1980

I hereby certify that the information shown on this plat was plotted from field notes of a survey made by me or under my supervision on **1463** that the same is true and correct to the best of my knowledge and belief.



Date Surveyed

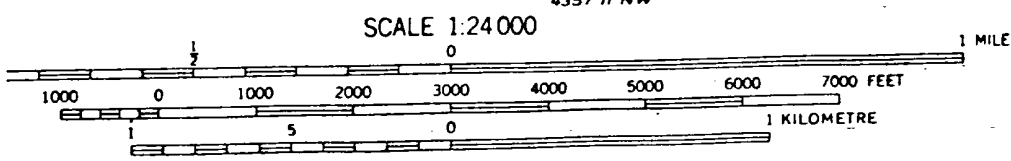
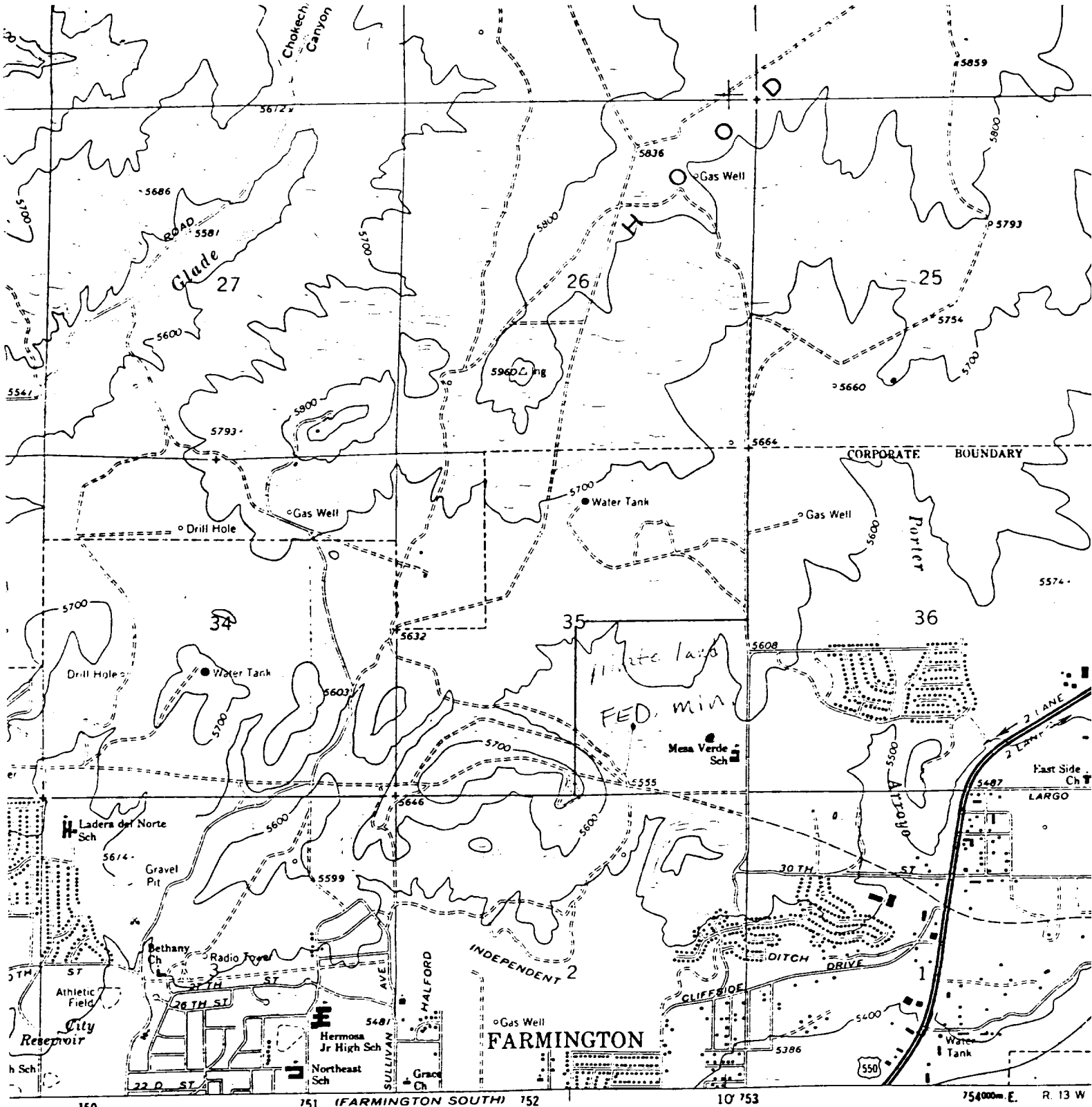
February 15, 1980

Registered Professional Engineer
and/or Land Surveyor

James P. Leese
James P. Leese

Certificate No.

1463



CONTOUR INTERVAL 20 FEET
DOTTED LINES REPRESENT 10 FOOT CONTOURS
NATIONAL GEODETIC VERTICAL DATUM OF 1929

City of Farmington No. 1-E
SE 1/4
Sec. 35, T-30N, R-13W



THIS MAP COMPLIES WITH NATIONAL MAP ACCURACY STANDARDS
BY U. S. GEOLOGICAL SURVEY, DENVER, COLORADO 80225, OR RESTON, VIRGINIA 22092
A FOLDER DESCRIBING TOPOGRAPHIC MAPS AND SYMBOLS IS AVAILABLE ON REQUEST