

UNITED STATES
DEPARTMENT OF THE INTERIOR
GEOLOGICAL SURVEY

SUNDRY NOTICES AND REPORTS ON WELLS

(Do not use this form for proposals to drill or to deepen or plug back to a different reservoir. Use Form 9-331-C for such proposals.)

1. oil well ☐ gas well ☒ other

2. NAME OF OPERATOR
SUPRON ENERGY CORPORATION

3. ADDRESS OF OPERATOR
P. O. Box 808, Farmington, NM 87401

4. LOCATION OF WELL (REPORT LOCATION CLEARLY. See space 17 below.)
AT SURFACE: 1120 ft./S; 1685 ft./E line
AT TOP PROD. INTERVAL: Same as above
AT TOTAL DEPTH: Same as above

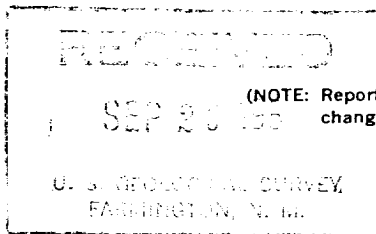
16. CHECK APPROPRIATE BOX TO INDICATE NATURE OF NOTICE, REPORT, OR OTHER DATA

REQUEST FOR APPROVAL TO:

TEST WATER SHUT-OFF ☐
FRACTURE TREAT ☐
SHOOT OR ACIDIZE ☐
REPAIR WELL ☐
PULL OR ALTER CASING ☐
MULTIPLE COMPLETE ☐
CHANGE ZONES ☐
ABANDON* ☐
(other) Ran 4 1/2" casing

SUBSEQUENT REPORT OF:

☐
☐
☐
☐
☐
☐
☐
☐
☒



(NOTE: Report results of multiple completion or zone change on Form 9-330.)

17. DESCRIBE PROPOSED OR COMPLETED OPERATIONS (Clearly state all pertinent details, and give pertinent dates, including estimated date of starting any proposed work. If well is directionally drilled, give subsurface locations and measured and true vertical depths for all markers and zones pertinent to this work.)*

1. Drilled 7 7/8" hole with mud to total depth of 6340 ft. R.K.B. Total depth was reached on 9-18-81.
2. Ran 153 joints of 4 1/2", 10.50#, K-55 casing and set at 6340 ft. R.K.B. with float collar at 6327 ft. R.K.B. Stage collars were set at 4336 ft. and 1726 ft. R.K.B.
3. Cemented first stage with 350 sacks of 50-50 POZ mix with 2% gel and 10% salt. Plug down at 11:30 a.m. 9-19-81. Cemented second stage with 300 sacks of 50-50 POZ mix with 4% gel and 50 sacks of Class "B" with 2% calcium chloride. Plug down at 2:30 p.m. 9-19-81. Cemented third stage with 300 sacks of 65-35-12 with 12 1/2 lbs. of Gilsonite per sack and 100 sacks of 50-50 Pox mix with 2% gel. Plug down at 4:00 p.m. 9-19-81.
4. Cement circulated to the surface on the third stage.

Subsurface Safety Valve: Manu. and Type _____ Set @ _____ Ft.

18. I hereby certify that the foregoing is true and correct.

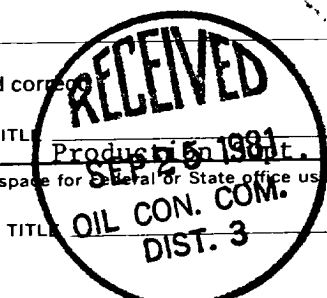
SIGNED Kenneth E. Roddy
Kenneth E. Roddy

TITLE Product Engineer

DATE September 21, 1981

(This space for Federal or State office use)

APPROVED BY _____
CONDITIONS OF APPROVAL, IF ANY:



DATE _____

SEP 24 1981

BY EAH