

UNITED STATES
DEPARTMENT OF THE INTERIOR
GEOLOGICAL SURVEY

30-045-25002

APPLICATION FOR PERMIT TO DRILL, DEEPEN, OR PLUG BACK

1a. TYPE OF WORK

DRILL ☒DEEPEN ☐PLUG BACK ☐

b. TYPE OF WELL

OIL
WELL ☒GAS
WELL ☐

OTHER

SINGLE
ZONE ☒MULTIPLE
ZONE ☐

2. NAME OF OPERATOR

Southland Royalty Company

3. ADDRESS OF OPERATOR

P. O. Drawer 570, Farmington, NM 84701

4. LOCATION OF WELL (Report location clearly and in accordance with any State requirements.)*
At surfaceP 980' FSL & 700' FEL
At proposed prod. zone

14. DISTANCE IN MILES AND DIRECTION FROM NEAREST TOWN OR POST OFFICE*

Approximately 5 miles south of Waterflow, New Mexico

15. DISTANCE FROM PROPOSED*

LOCATION TO NEAREST
PROPERTY OR LEASE LINE, FT.
(Also to nearest drg. unit line, if any)

700'

18. DISTANCE FROM PROPOSED LOCATION*
TO NEAREST WELL, DRILLING, COMPLETED,
OR APPLIED FOR, ON THIS LEASE, FT.

2900'

16. NO. OF ACRES IN LEASE

1549.83

7.154279

19. PROPOSED DEPTH

4350'

17. NO. OF ACRES ASSIGNED
TO THIS WELL

40

20. ROTARY OR CABLE TOOLS

Rotary

21. ELEVATIONS (Show whether DF, RT, GR, etc.)

5170' GR

22. APPROX. DATE WORK WILL START*

August 16, 1981

23. PROPOSED CASING AND CEMENTING PROGRAM

SIZE OF HOLE	SIZE OF CASING	WEIGHT PER FOOT	SETTING DEPTH	QUANTITY OF CEMENT
12 1/4"	8 5/8"	24#	200'	165 cu. ft.
7 7/8"	5 1/2"	15.5#	4350'	156 cu. ft. -Stage One
				506 cu. ft. -Stage Two

Surface formation is Kirtland Shale.

Top of Pictured Cliffs sand is at 645'.

Top of Point Lookout sand is at 2473'.

Fresh water mud will be used to drill from surface to total depth.

It is anticipated that IES, GR/CNL-FDC, GR-BHC Sonic logs will be run at total depth.

No abnormal pressures or poisonous gases are anticipated in this well.

It is expected that this well will be drilled before November 30, 1981.

This depends on time required for approvals, rig availability, and the weather.

Gas is not dedicated.

RECEIVED
APR 16 1981
OIL CON. COM.
DIST. 3

IN ABOVE SPACE DESCRIBE PROPOSED PROGRAM: If proposal is to deepen or plug back, give data on present productive zone and proposed new productive zone. If proposal is to drill or deepen directionally, give pertinent data on subsurface locations and measured and true vertical depths. Give blowout preventer program, if any.

24.

SIGNED

R. E. Fields

TITLE District Engineer

DATE 3-3-81

(This space for Federal or State office use)

PERMIT NO.

APPROVAL DATE

APPROVED BY

TITLE

CONDITIONS OF APPROVAL, IF ANY:

APPROVED
AS AMENDEDAPR 15 1981
James F. Sims
JAMES F. SIMS
DISTRICT ENGINEER

All distances must be from the outer boundaries of the Section FARMINGTON DISTRICT

Operator SOUTHLAND ROYALTY COMPANY			Lease HOLLY-FEDERAL		Well No. 1
Unit Letter P	Section 29	Township 30N	Range 15W	County San Juan	
Actual Footage Location of Well: 980 feet from the South line and 700 feet from the East line					
Ground Level Elev. 5170	Producing Formation Wildcat Gallup		Pool Wildcat Meadows east		Dedicated Acreage: 40 Acres

- Outline the acreage dedicated to the subject well by colored pencil or hatchure marks on the plat below.
- If more than one lease is dedicated to the well, outline each and identify the ownership thereof (both as to working interest and royalty).
- If more than one lease of different ownership is dedicated to the well, have the interests of all owners been consolidated by communitization, unitization, force-pooling, etc?

☐ Yes ☐ No If answer is "yes," type of consolidation _____

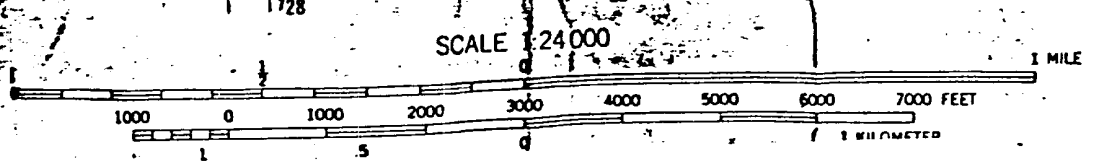
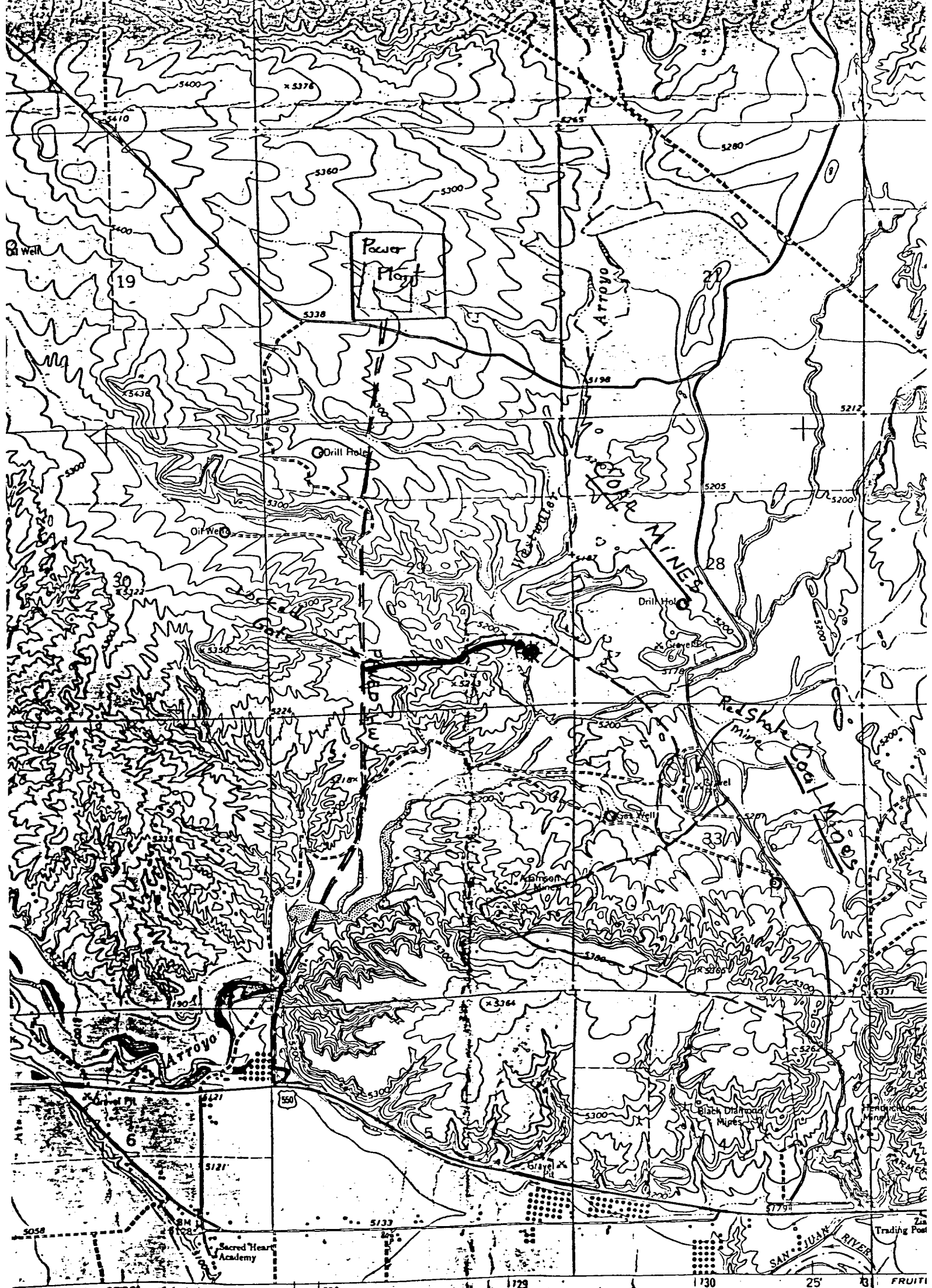
If answer is "no," list the owners and tract descriptions which have actually been consolidated. (Use reverse side of this form if necessary.) _____

No allowable will be assigned to the well until all interests have been consolidated (by communitization, unitization, forced-pooling, or otherwise) or until a non-standard unit, eliminating such interests, has been approved by the Commission.

Sec.	29	

Scale: 1"=1000'

CERTIFICATION	
I hereby certify that the information contained herein is true and complete to the best of my knowledge and belief.	
Name	Robert E. Fielder
Position	District Engineer
Company	Southland Royalty Company
Date	March 3, 1981
I hereby certify that the well location shown on this plat was plotted from field notes of actual surveys made by me or under my supervision, and that the same is true and correct to the best of my knowledge and belief.	
Date Surveyed	February 19, 1981
Registered Professional Engineer and Land Surveyor No. 13959	
Fred B. Kerr, Jr.	
Certificate No. 3950	



Vicinity Map for
SOUTHLAND ROYALTY CO. #1 HOLLY-FEDERA
980' FSL 700' FEL Sec. 29-T30N-R15W
SAN JUAN COUNTY, NEW MEXICO

PROPOSED LOCATION
EXISTING LOCATIONS
PROPOSED ROAD
EXISTING ROAD



14°
MILES

METRIC NORTH
OF SHEET

NATIONAL MAP ACCURACY STATEMENT

510
720